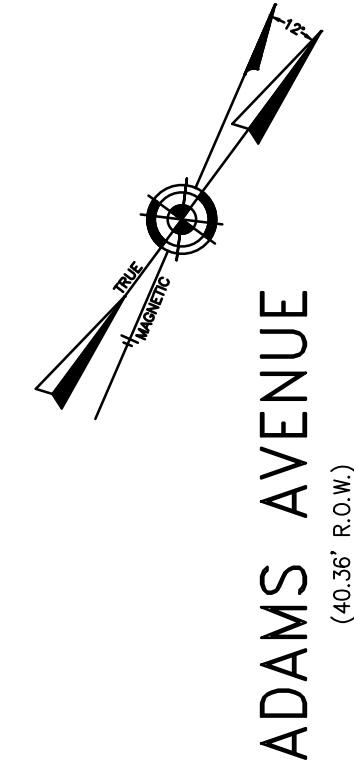
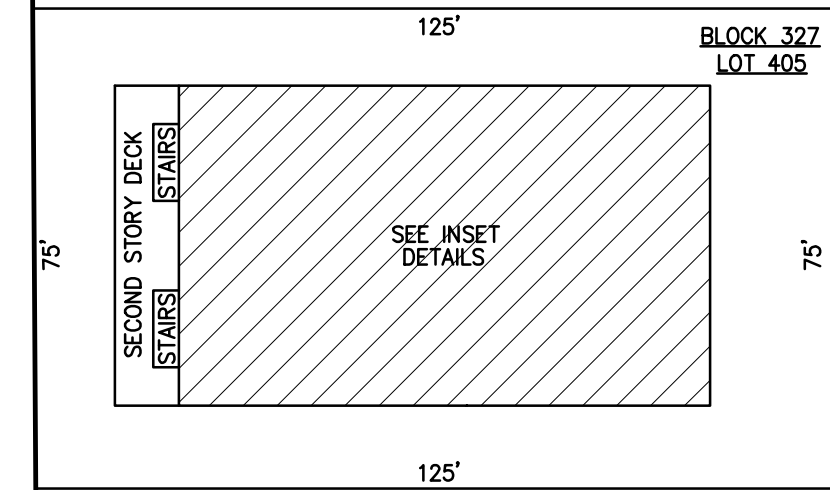


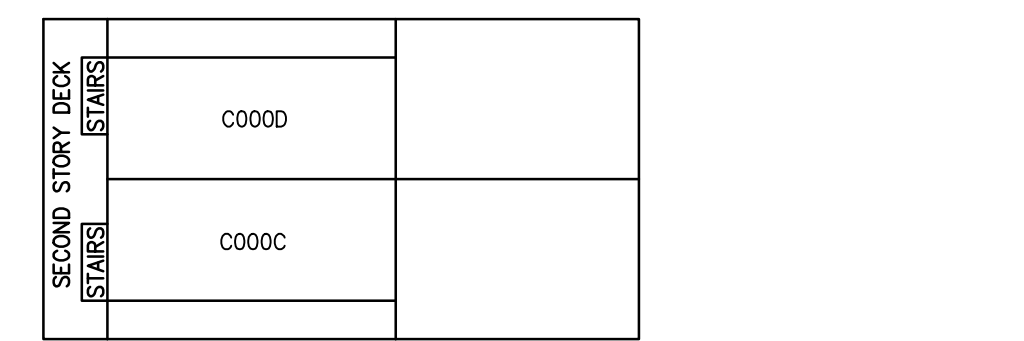
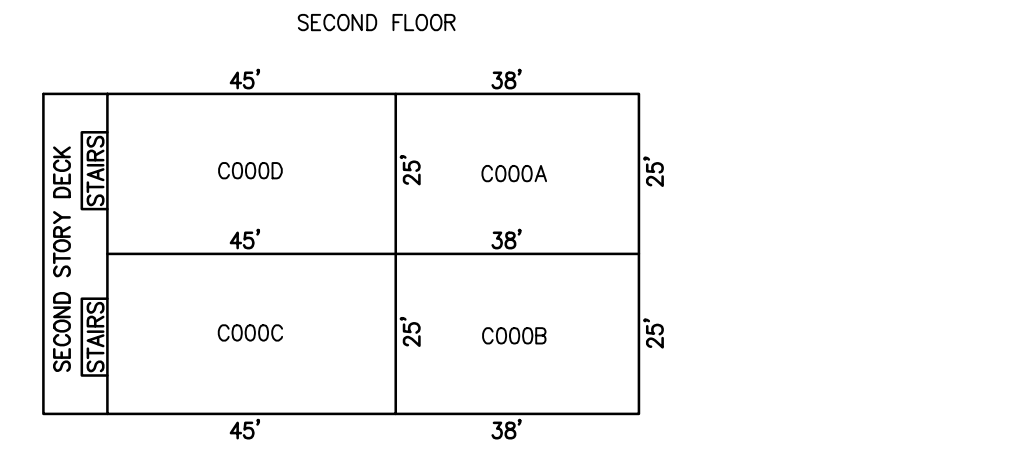
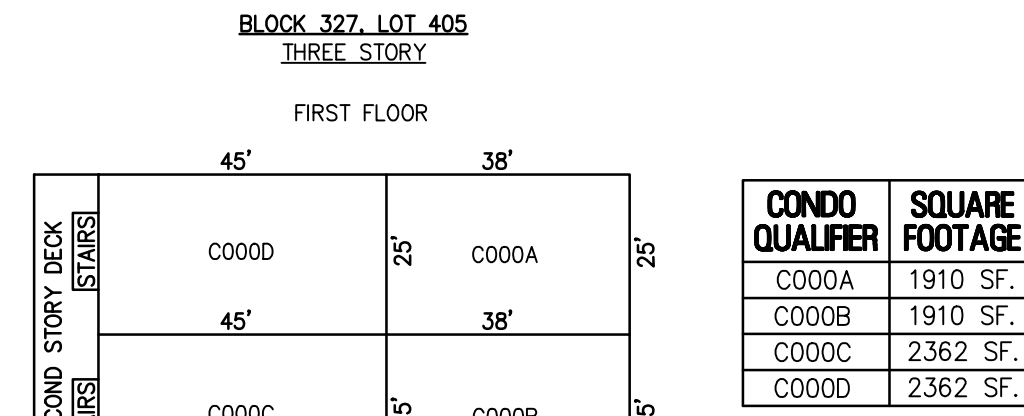
REVISIONS	



ADAMS AVENUE
(40.36' R.O.W.)

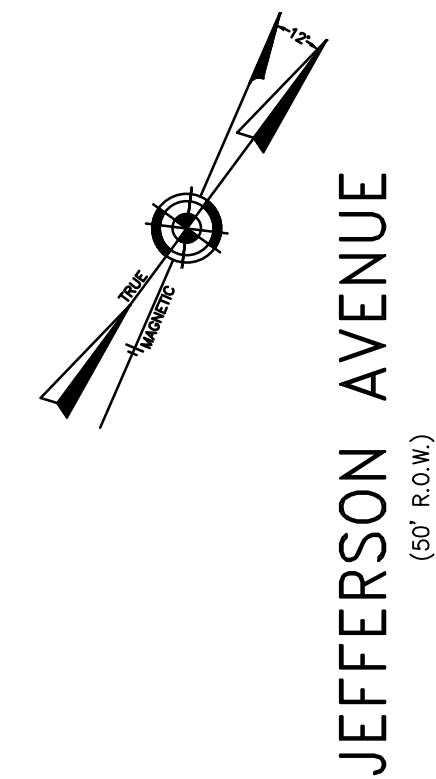


PLAN
SCALE: 1"=30'

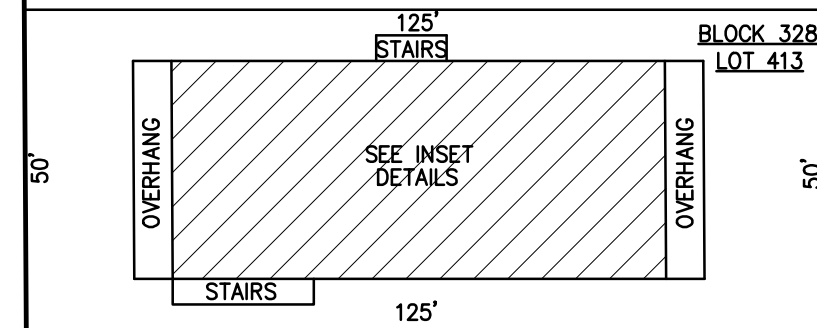


DETAILS
SCALE: 1"=30'

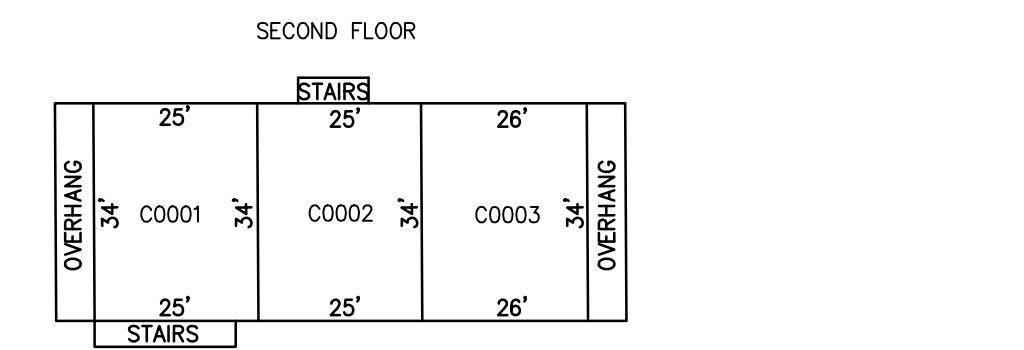
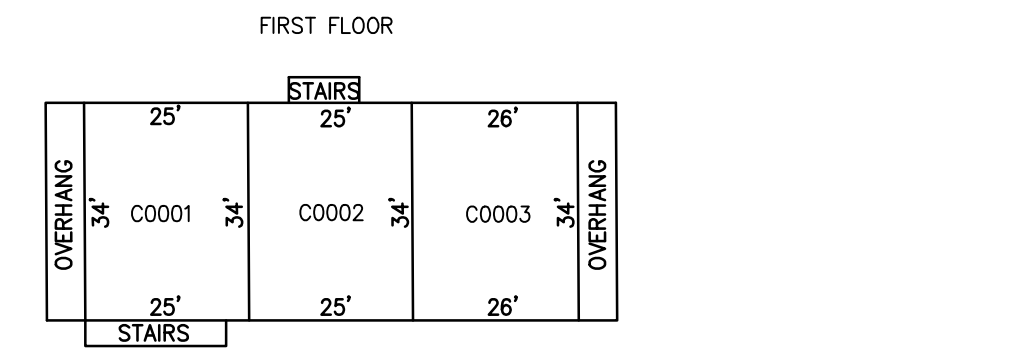
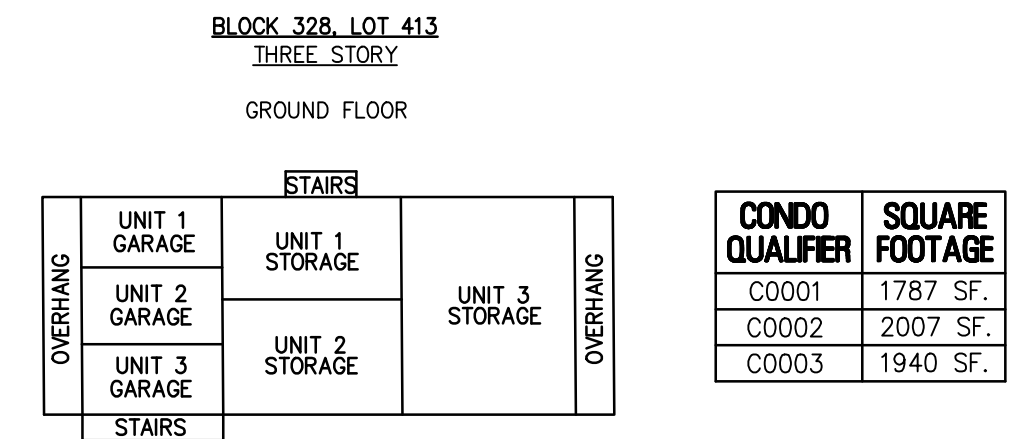
BLOCK 327, LOT 405
105 NORTH ADAMS AVENUE CONDOMINIUMS
105 NORTH ADAMS AVENUE



JEFFERSON AVENUE
(50' R.O.W.)

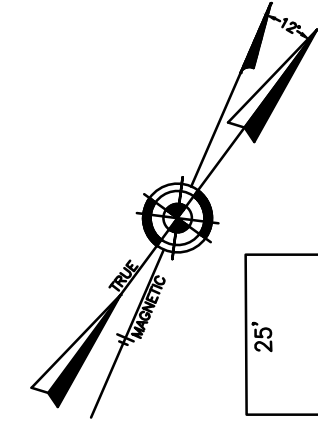


PLAN
SCALE: 1"=30'

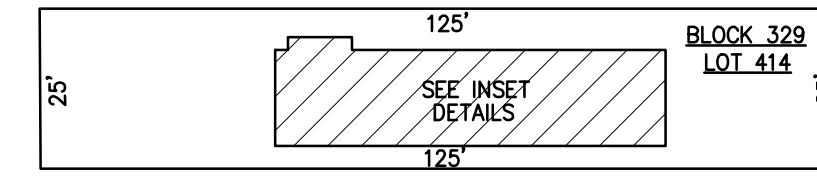


DETAILS
SCALE: 1"=30'

BLOCK 328, LOT 413
117 NORTH JEFFERSON AVENUE CONDOMINIUMS
117 NORTH JEFFERSON AVENUE

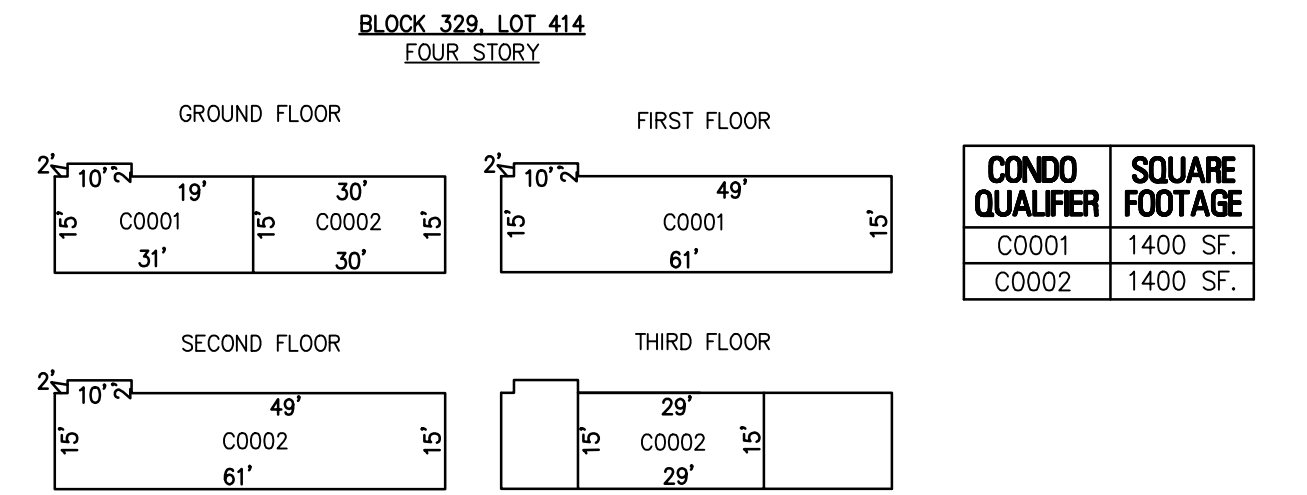


JEFFERSON AVENUE
(50' R.O.W.)

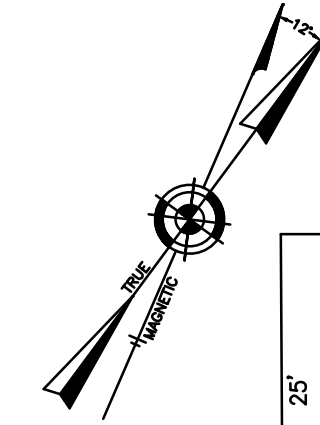


PLAN
SCALE: 1"=30'

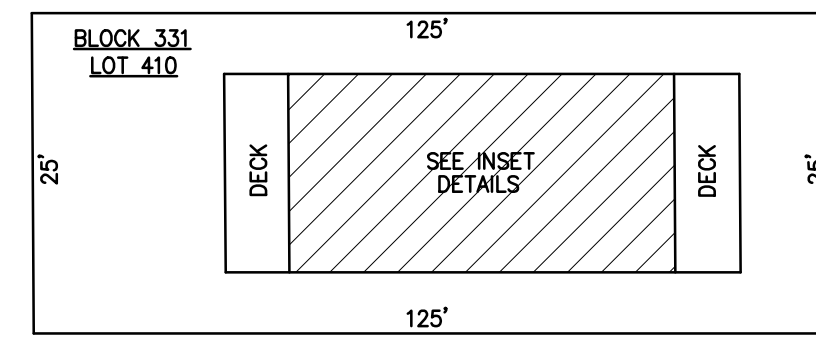
BLOCK 329, LOT 414
118 NORTH JEFFERSON AVENUE CONDOMINIUMS
118 NORTH JEFFERSON AVENUE



DETAILS
SCALE: 1"=30'

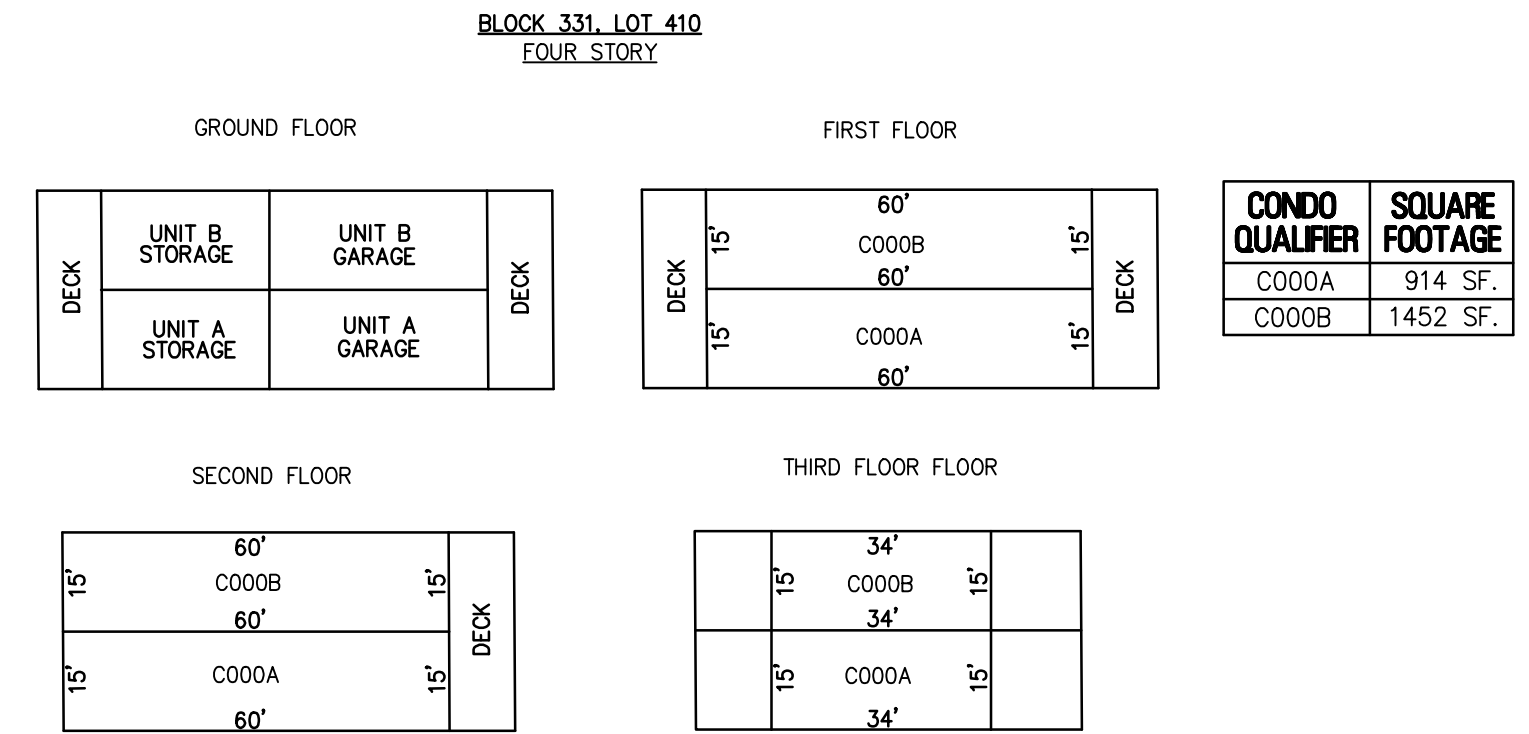


MONROE AVENUE
(50' R.O.W.)



PLAN
SCALE: 1"=30'

BLOCK 331, LOT 410
112 NORTH MONROE AVENUE CONDOMINIUMS
112 NORTH MONROE AVENUE



DETAILS
SCALE: 1"=30'

CONDOMINIUM DETAILS AND DIMENSIONS
BLOCK 327, LOT 405
BLOCK 328, LOT 413
BLOCK 329, LOT 414
BLOCK 331, LOT 410
SEE PLATE 5

"THIS TAX MAP PLATE HAS BEEN DIGITALLY DRAWN USING COMPUTER-AIDED DRAFTING/DESIGN (CADD) & COORDINATE GEOMETRY (COGO). IT IS BASED ON THE ORIGINAL DIGITALLY DRAWN TAX MAP PLATE BEARING THE OFFICIAL NEW JERSEY DIVISION TAXATION APPROVAL STAMP WITH APPROVAL DATE 6-3-2005 SERIAL NUMBER 846 AND SIGNATURES OF SIGNERS' THOMAS J. REILLY, CHIEF, LOCAL PROPERTY, FIELD ASSISTANCE. SANTO C. DIDONATO, SUPERVISING FIELD REPRESENTATIVE. THE ORIGINAL DIGITALLY DRAWN TAX MAP PLATE WITH THE OFFICIAL APPROVAL STAMP IS ON FILE WITH REMINGTON, VERNICK & WALBERG ENGINEERS."

TAX MAP
CITY OF MARGATE

ATLANTIC COUNTY NEW JERSEY
SCALE: AS NOTED DATE: 3-17-2018

CRAIG F. REMINGTON LAND SURVEYOR LIC. NO. 23924



REMINGTON, VERNICK & WALBERG ENGINEERS
24 GA 28048700
845 N. MAIN STREET, PLEASANTVILLE, N.J. 08232
(609) 645-790, FAX (609) 645-7076
WEB SITE ADDRESS: WWW.RVW.COM