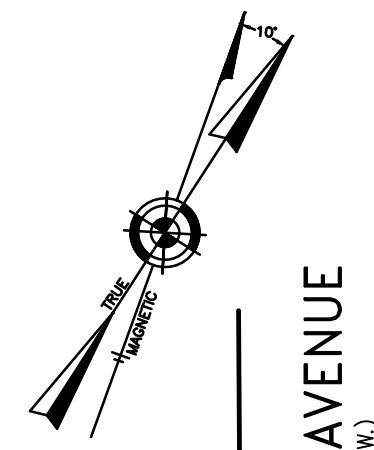
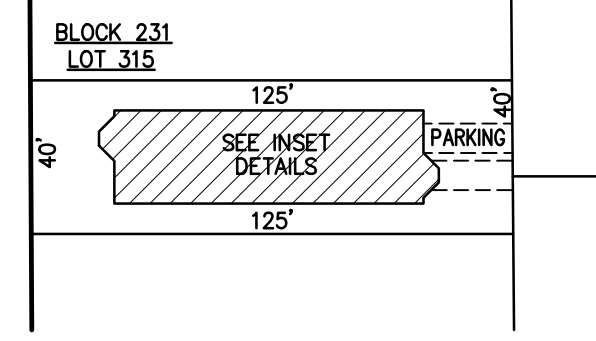


REVISIONS		
8-31-2009	CRAIG F. REMINGTON	23924

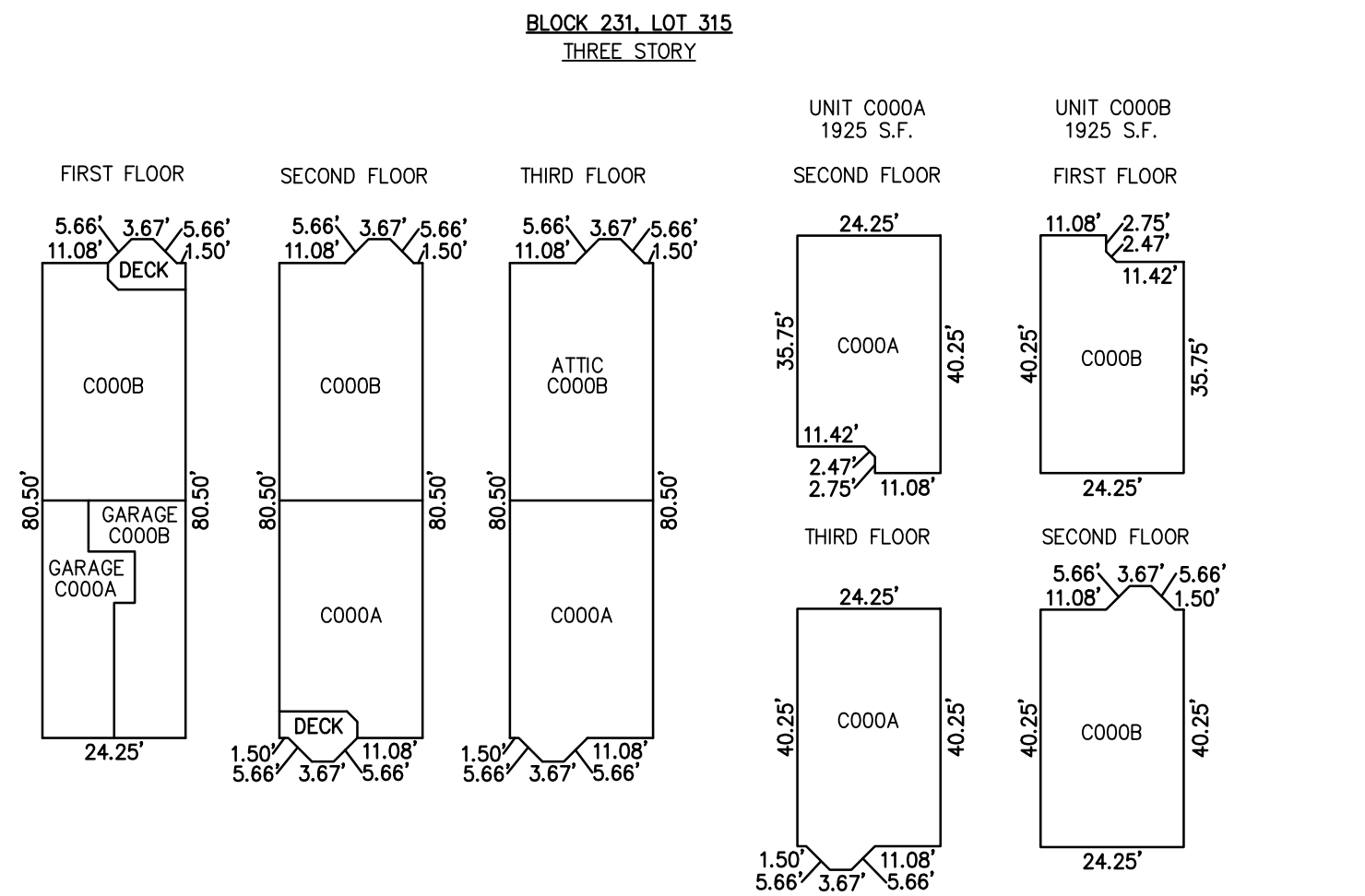


COOLIDGE AVENUE  
(50' R.O.W.)



**PLAN**  
SCALE: 1"=50'

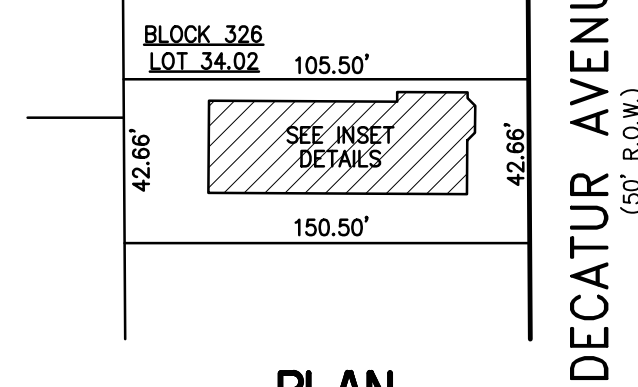
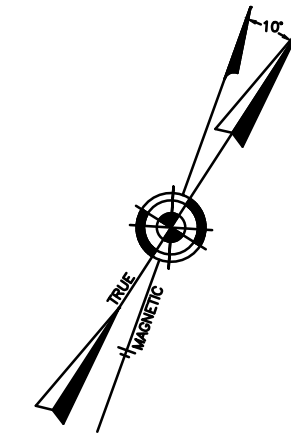
UNIT NO.	LOT NO.
C000A	C-01
C000B	C-02



NOTE: 1. DIMENSIONS AND SQUARE FOOTAGE ARE TYPICAL FOR SIMILAR UNITS

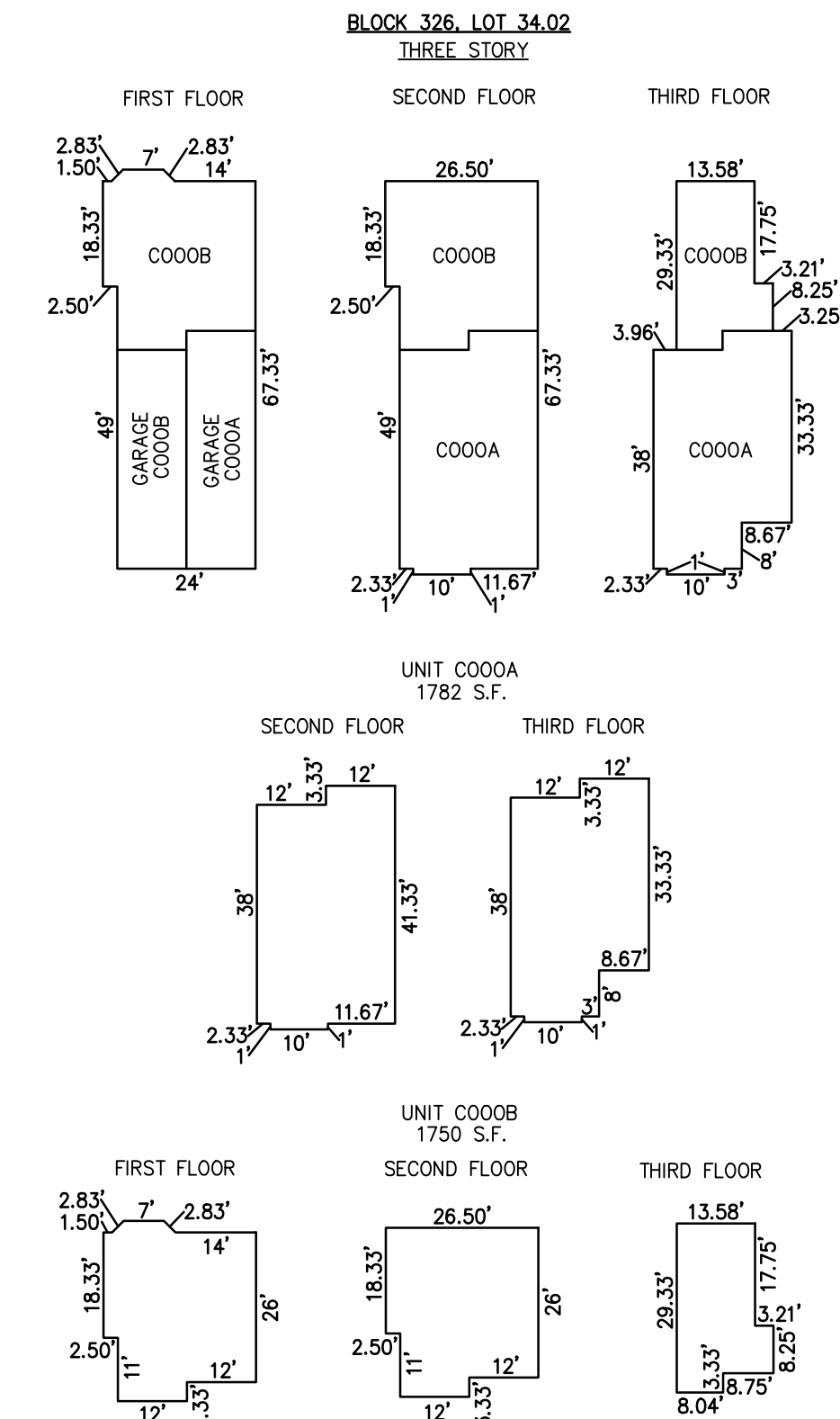
**DETAILS**  
SCALE: 1"=30'

**BLOCK 231, LOT 315**  
**17-19 NORTH COOLIDGE AVENUE CONDOMINIUM**  
**17-19 NORTH COOLIDGE AVENUE**  
**INSET "3C"**



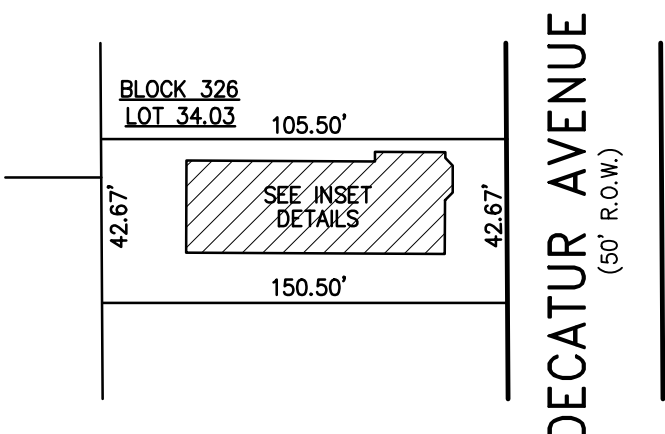
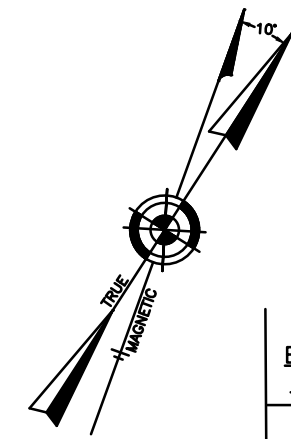
**PLAN**  
SCALE: 1"=50'

UNIT NO.	LOT NO.
C000A	C-01
C000B	C-02



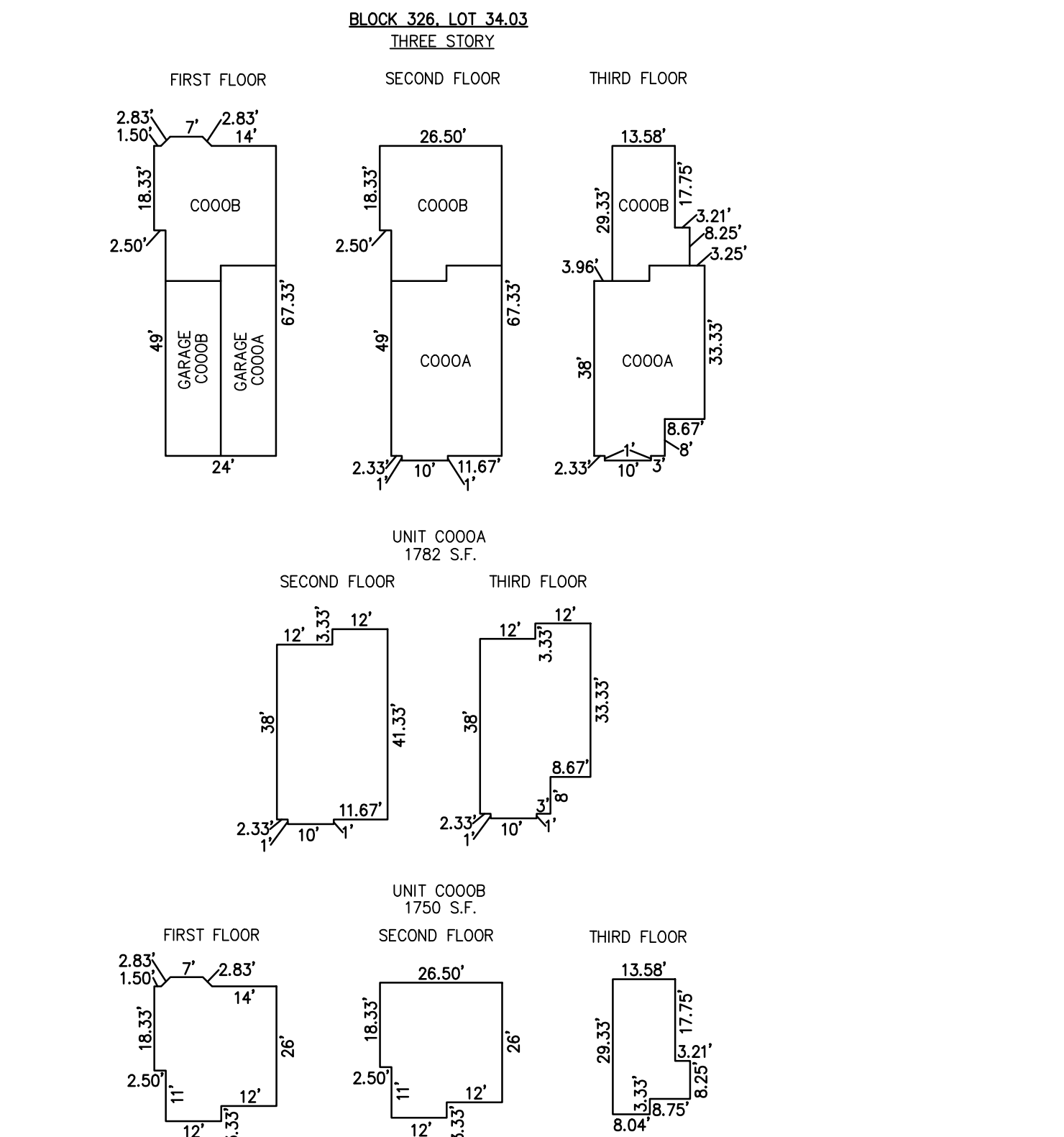
**DETAILS**  
SCALE: 1"=30'

**BLOCK 326, LOT 34.02**  
**114 NORTH DECATUR CONDOMINIUM**  
**114 NORTH DECATUR AVENUE**  
**INSET "3F"**



**PLAN**  
SCALE: 1"=50'

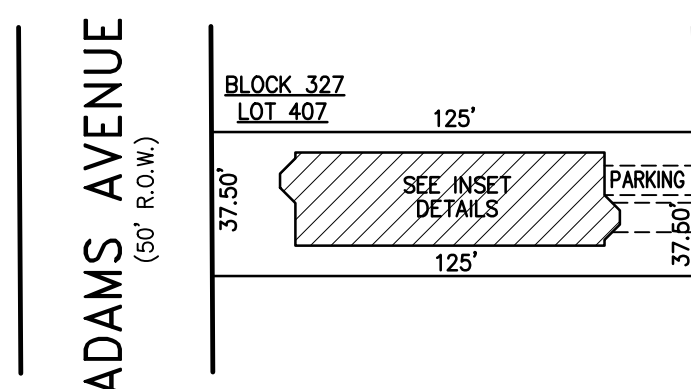
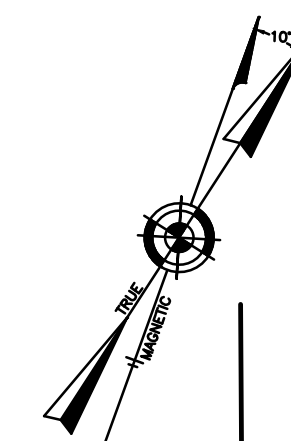
UNIT NO.	LOT NO.
C000A	C-01
C000B	C-02



NOTE: 1. DIMENSIONS AND SQUARE FOOTAGE ARE TYPICAL FOR SIMILAR UNITS

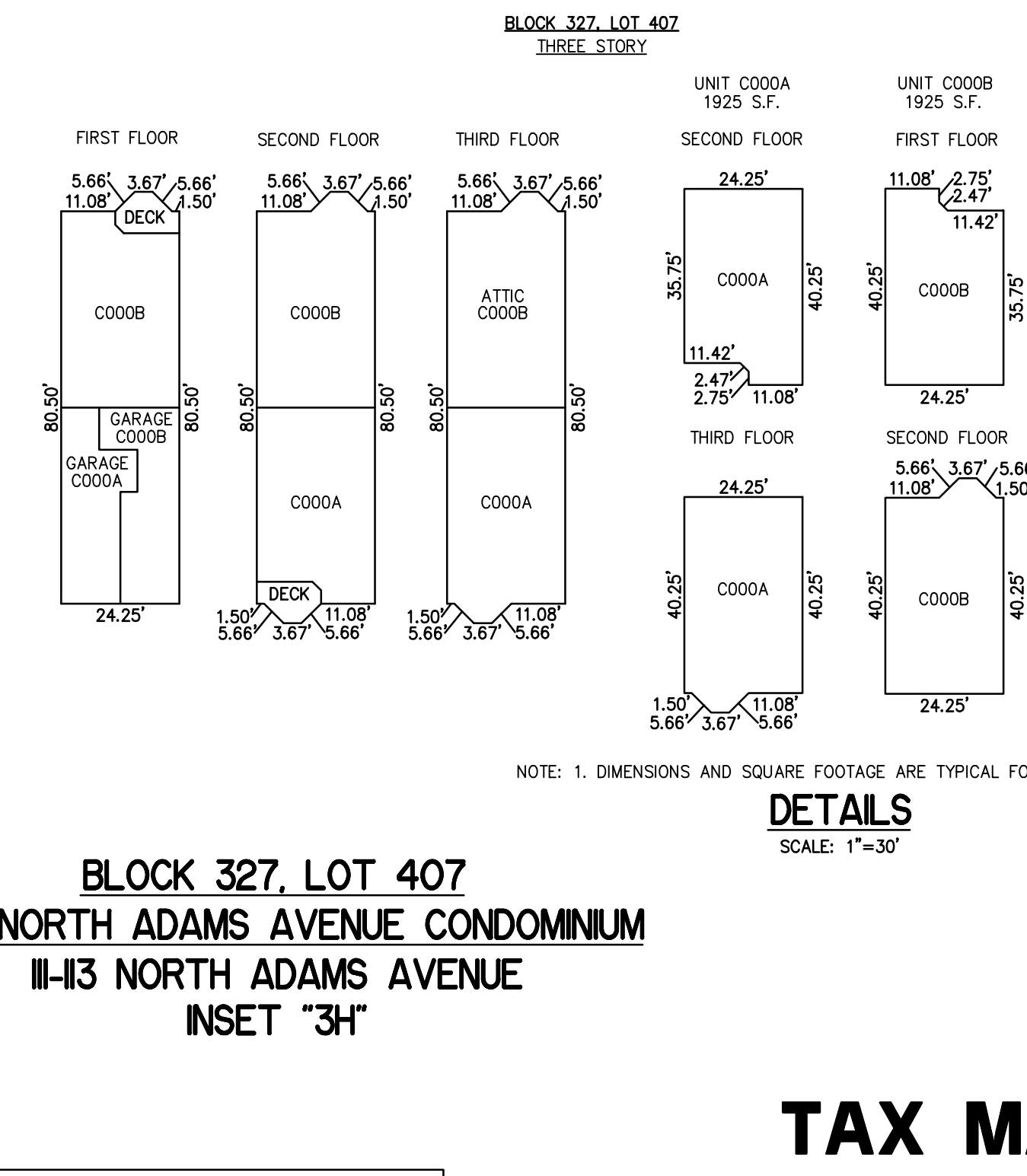
**DETAILS**  
SCALE: 1"=30'

**BLOCK 326, LOT 34.03**  
**112 NORTH DECATUR CONDOMINIUM**  
**112 NORTH DECATUR AVENUE**  
**INSET "3G"**



**PLAN**  
SCALE: 1"=50'

UNIT NO.	LOT NO.
C000A	C-01
C000B	C-02



**BLOCK 327, LOT 407**  
**111-113 NORTH ADAMS AVENUE CONDOMINIUM**  
**111-113 NORTH ADAMS AVENUE**  
**INSET "3H"**

**CONDOMINIUM DETAILS AND DIMENSIONS**  
**BLOCK 326, LOT 34.02**  
**BLOCK 326, LOT 34.03**  
**BLOCK 327, LOT 407**  
**BLOCK 231, LOT 315**  
**SEE PLATE 5**

"THIS TAX MAP PLATE HAS BEEN DIGITALLY DRAWN USING COMPUTER-AIDED DRAFTING/DESIGN (CADD) & COORDINATE GEOMETRY (COGO). IT IS BASED ON THE ORIGINAL DIGITALLY DRAWN TAX MAP PLATE BEARING THE OFFICIAL NEW JERSEY DIVISION TAXATION APPROVAL STAMP WITH APPROVAL DATE 6-3-2005 SERIAL NUMBER 846 AND SIGNATURES OF SIGNERS THOMAS J. REILLY, CHIEF, LOCAL PROPERTY, FIELD ASSISTANCE, SANTO C. DIDONATO, SUPERVISING FIELD REPRESENTATIVE. THE ORIGINAL DIGITALLY DRAWN TAX MAP PLATE WITH THE OFFICIAL APPROVAL STAMP IS ON FILE WITH REMINGTON, VERNICK & WALBERG ENGINEERS."

**TAX MAP**  
**CITY OF MARGATE**

ATLANTIC COUNTY NEW JERSEY  
SCALE: AS NOTED DATE: 1-30-2004

**CRAIG F. REMINGTON LAND SURVEYOR LIC. NO. 23924**



**REMINGTON, VERNICK & WALBERG ENGINEERS**  
24 GA 28048700  
845 N. MAIN STREET, PLEASANTVILLE, NJ 08232  
(609) 645-710, FAX (609) 645-7076  
WEB SITE ADDRESS: WWW.RVW.COM