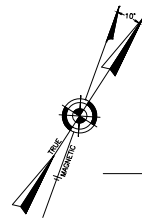
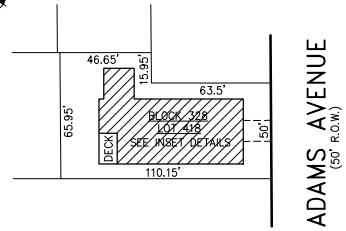


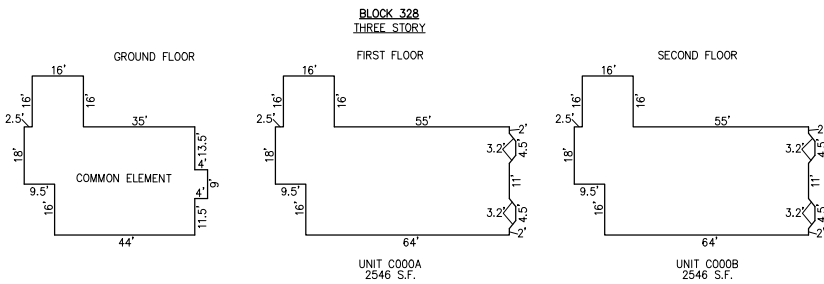
REVISIONS		
4-13-2007	CRAIG F. REMINGTON	23924



UNIT NO.	LOT NO.
C000A	C-01
C000B	C-02



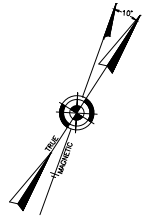
PLAN
SCALE: 1"=50'



NOTE: 1. DIMENSIONS AND SQUARE FOOTAGE ARE TYPICAL FOR SIMILAR UNITS

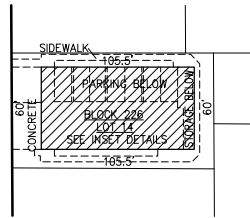
DETAILS
SCALE: 1"=30'

BLOCK 328, LOT 418
122 NORTH ADAMS AVENUE CONDOMINIUM
122 NORTH ADAMS AVENUE
INSET "1 Y"

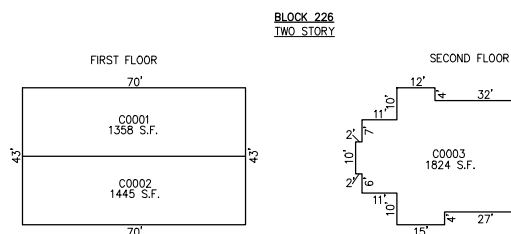


UNIT NO.	LOT NO.
C0001	C-01
C0002	C-02
C0003	C-03

WASHINGTON AVENUE
(62' R.O.W.)



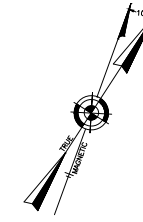
PLAN
SCALE: 1"=50'



NOTE: 1. DIMENSIONS AND SQUARE FOOTAGE ARE TYPICAL FOR SIMILAR UNITS

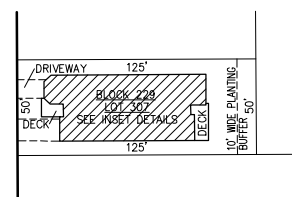
DETAILS
SCALE: 1"=30'

BLOCK 226, LOT 14
25 NORTH WASHINGTON AVENUE CONDOMINIUM
25 NORTH WASHINGTON AVENUE
INSET "2A"

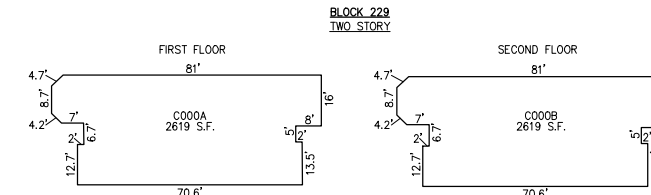


UNIT NO.	LOT NO.
C000A	C-01
C000B	C-02

MADISON AVENUE
(60' R.O.W.)

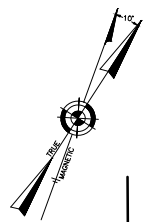


PLAN
SCALE: 1"=50'



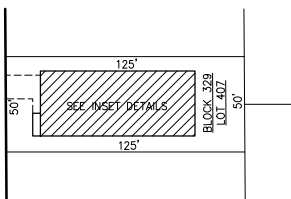
DETAILS
SCALE: 1"=30'

BLOCK 229, LOT 307
THE PALMS AT MADISON CONDOMINIUM
111 NORTH MADISON AVENUE
INSET "2B"

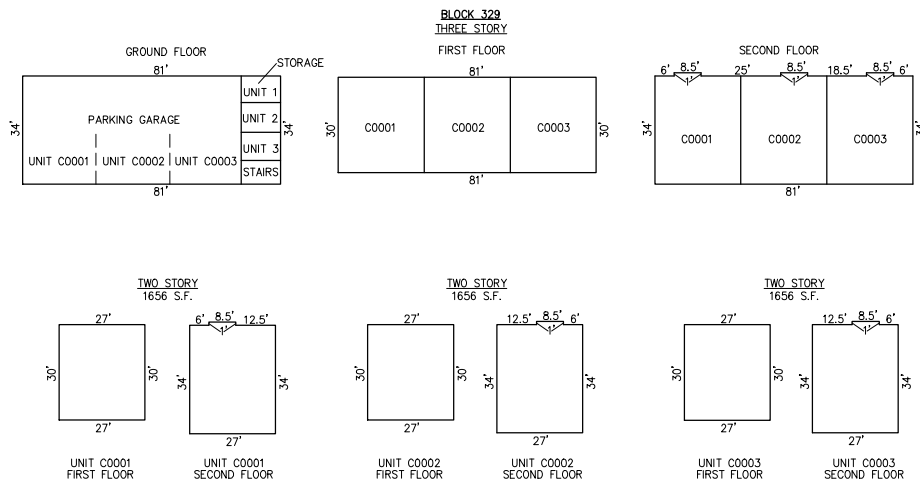


UNIT NO.	LOT NO.
C0001	C-01
C0002	C-02
C0003	C-03

MADISON AVENUE
(60' R.O.W.)



PLAN
SCALE: 1"=50'



NOTE: 1. DIMENSIONS AND SQUARE FOOTAGE ARE TYPICAL FOR SIMILAR UNITS

DETAILS
SCALE: 1"=30'

BLOCK 329, LOT 407
111 NORTH MADISON CONDOMINIUM
111 NORTH MADISON AVENUE
INSET "1 Z"

CONDOMINIUM DETAILS AND DIMENSIONS
BLOCK 328, LOT 418
BLOCK 329, LOT 407
BLOCK 226, LOT 14
BLOCK 229, LOT 307
SEE PLATE 5

"THIS TAX MAP PLATE HAS BEEN DIGITALLY DRAWN USING COMPUTER-AIDED DRAFTING/DESIGN (CADD) & COORDINATE GEOMETRY (COGO). IT IS BASED ON THE ORIGINAL DIGITALLY DRAWN TAX MAP PLATE BEARING THE OFFICIAL NEW JERSEY DIVISION TAXATION APPROVAL STAMP WITH APPROVAL DATE 6-3-2005 SERIAL NUMBER 846 AND SIGNATURES OF SIGNERS' THOMAS J. REILLY, CHIEF, LOCAL PROPERTY, FIELD ASSISTANCE. SANTO C. DIDONATO, SUPERVISING FIELD REPRESENTATIVE. THE ORIGINAL DIGITALLY DRAWN TAX MAP PLATE WITH THE OFFICIAL APPROVAL STAMP IS ON FILE WITH REMINGTON, VERNICK & WALBERG ENGINEERS."

TAX MAP
CITY OF MARGATE

ATLANTIC COUNTY NEW JERSEY
SCALE: AS NOTED DATE: 1-30-2004

CRAIG F. REMINGTON LAND SURVEYOR LIC. NO. 23924



REMINGTON, VERNICK & WALBERG ENGINEERS
24 GA 28048700
845 N. MAIN STREET, PLEASANTVILLE, N.J. 08232
(609) 645-7100, FAX (609) 645-7076
WEB SITE ADDRESS: WWW.RVW.COM