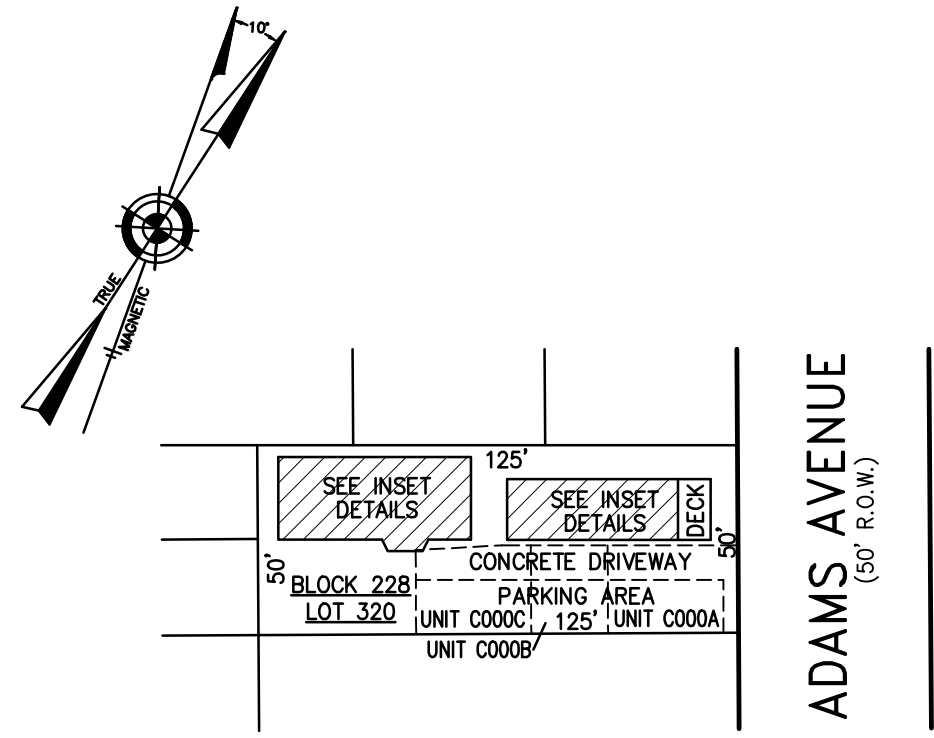
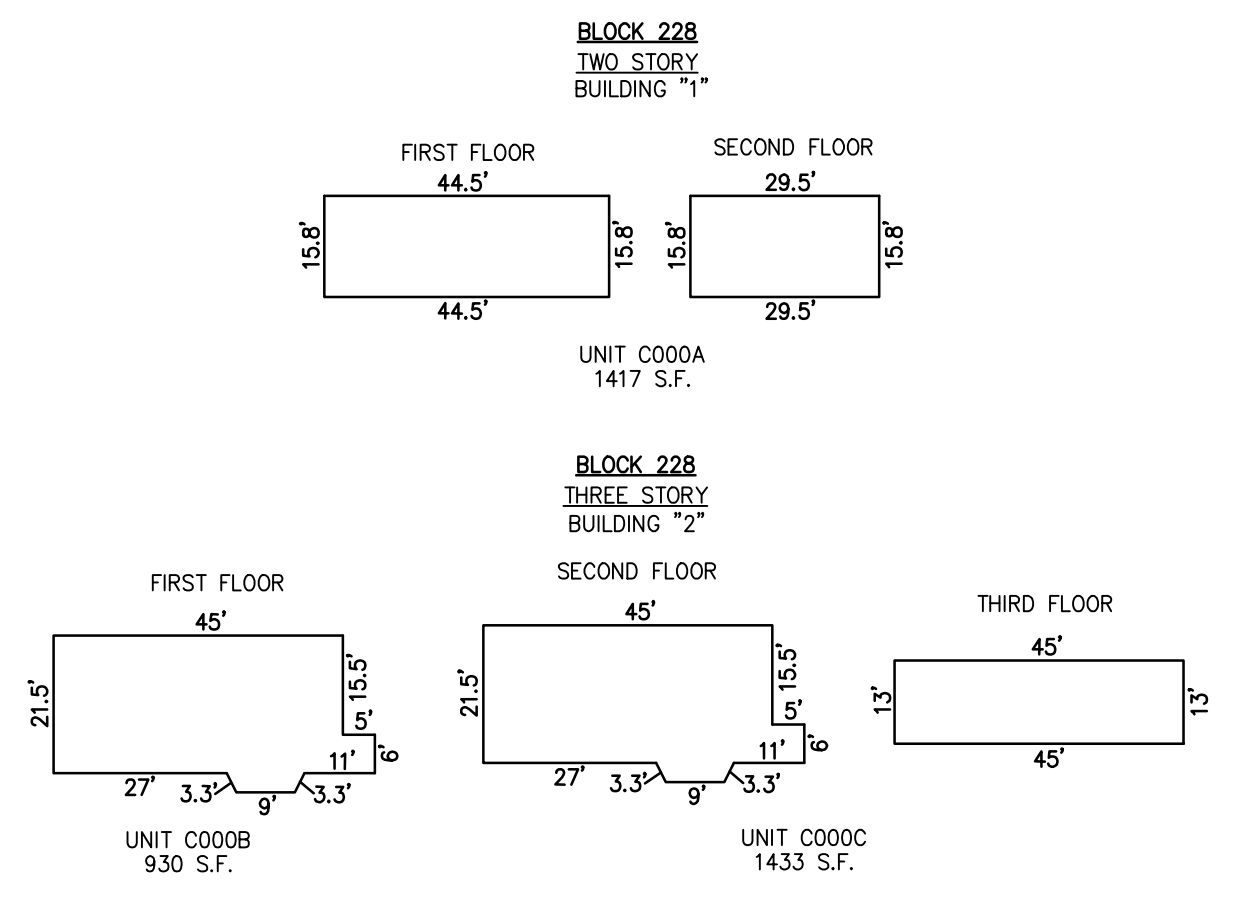


REVISIONS		
4-13-2007	CRAIG F. REMINGTON	23924

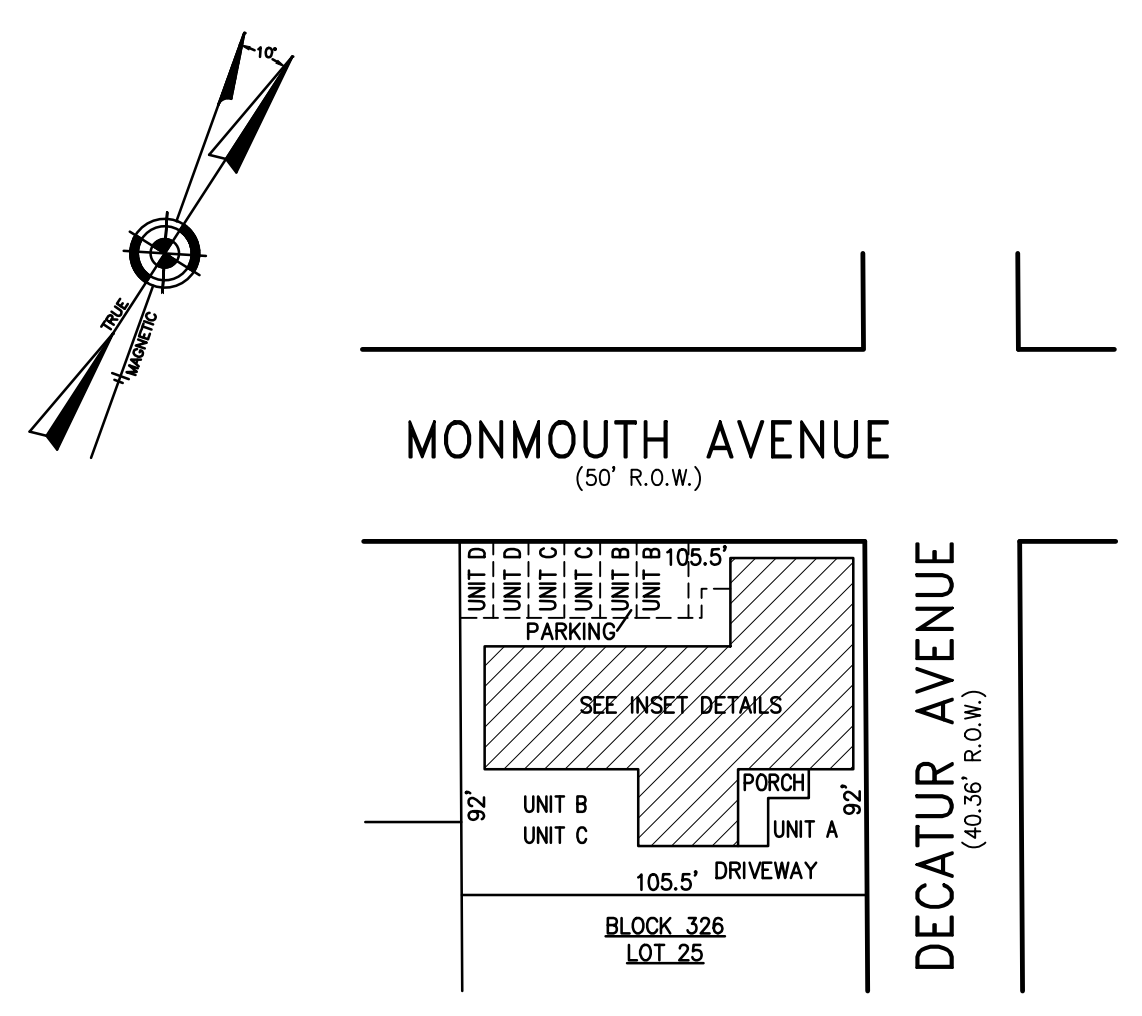


PLAN
SCALE: 1"=50'

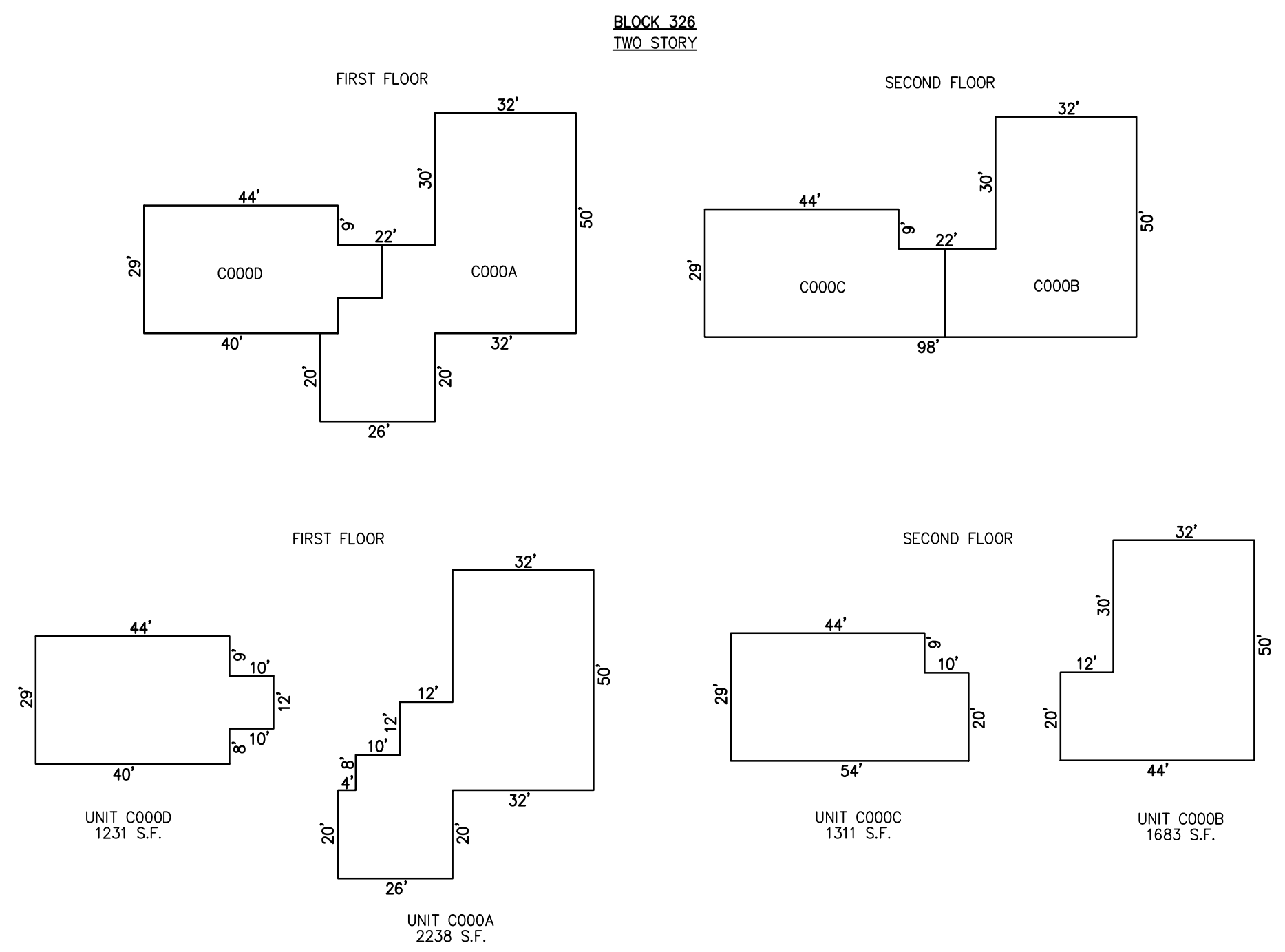


DETAILS
SCALE: 1"=30'

BLOCK 228, LOT 320
24 NORTH ADAMS AVENUE CONDOMINIUM
 24 NORTH ADAMS AVENUE
 INSET "I Q"



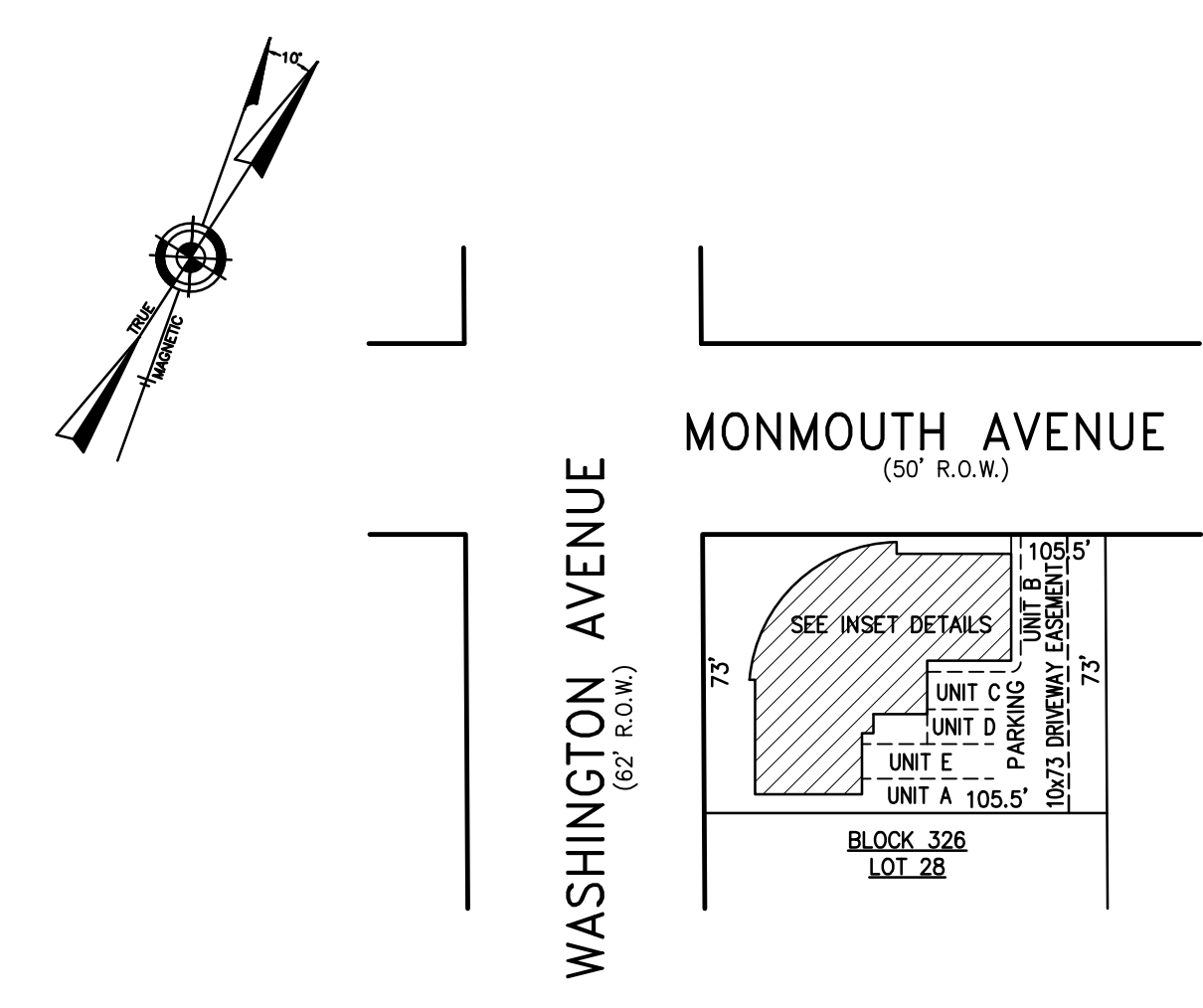
PLAN
SCALE: 1"=50'



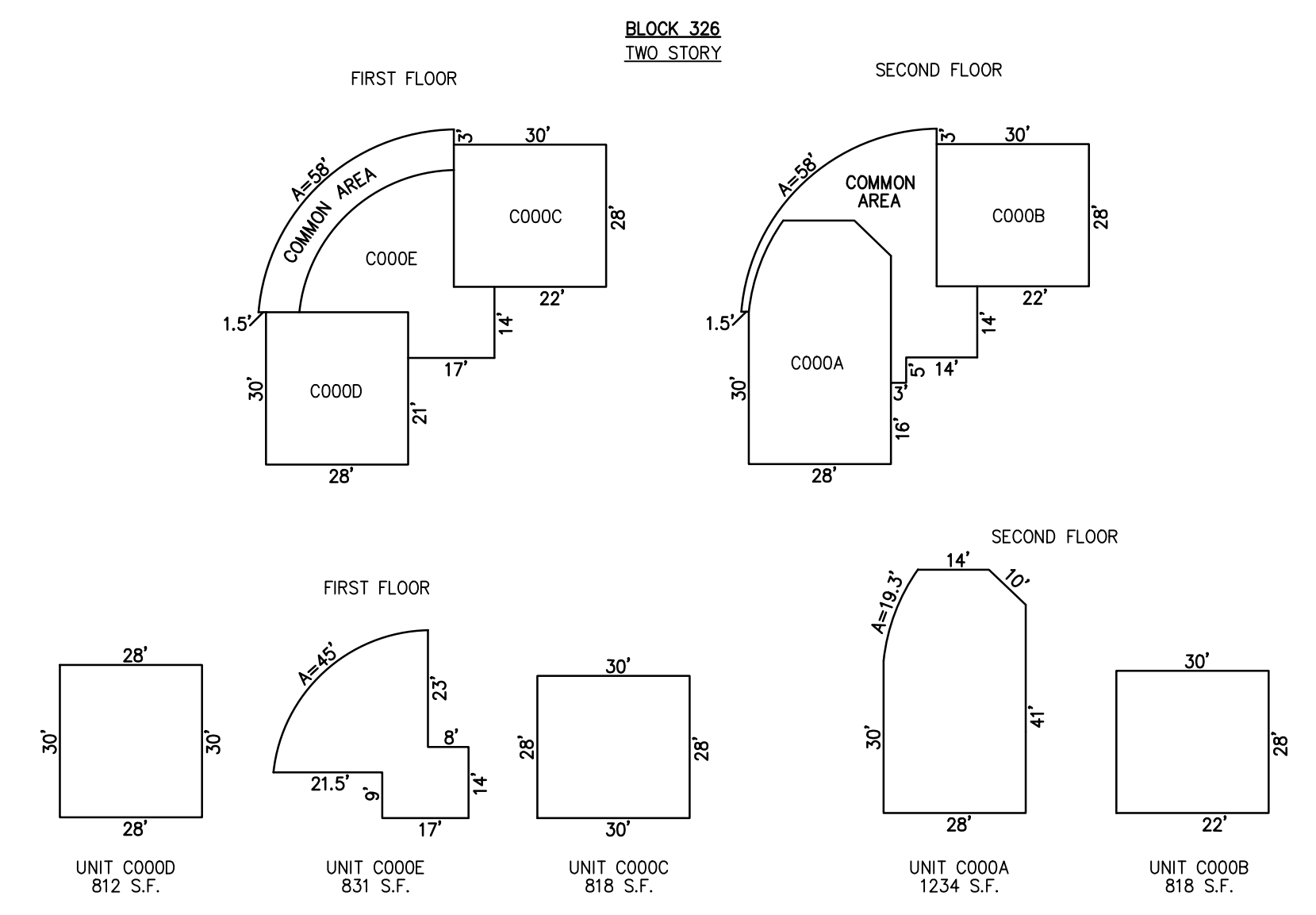
DETAILS
SCALE: 1"=30'

BLOCK 326, LOT 25
9200 MONMOUTH AVENUE CONDOMINIUM
 9200 MONMOUTH AVENUE
 INSET "I R"

CONDOMINIUM DETAILS AND DIMENSIONS
 BLOCK 228, LOT 320
 BLOCK 326, LOT 25
 BLOCK 326, LOT 28
 SEE PLATE 5



PLAN
SCALE: 1"=50'



DETAILS
SCALE: 1"=30'

BLOCK 326, LOT 28
SOUTH BAY VISTA CONDOMINIUM
 127 NORTH WASHINGTON AVENUE
 INSET "I S"

"THIS TAX MAP PLATE HAS BEEN DIGITALLY DRAWN USING COMPUTER-AIDED DRAFTING/DESIGN (CADD) & COORDINATE GEOMETRY (COGO). IT IS BASED ON THE ORIGINAL DIGITALLY DRAWN TAX MAP PLATE BEARING THE OFFICIAL NEW JERSEY DIVISION TAXATION APPROVAL STAMP WITH APPROVAL DATE 6-3-2005 SERIAL NUMBER 846 AND SIGNATURES OF SIGNERS' THOMAS J. REILLY, CHIEF, LOCAL PROPERTY, FIELD ASSISTANCE. SANTO C. DIDONATO, SUPERVISING FIELD REPRESENTATIVE. THE ORIGINAL DIGITALLY DRAWN TAX MAP PLATE WITH THE OFFICIAL APPROVAL STAMP IS ON FILE WITH REMINGTON, VERNICK & WALBERG ENGINEERS."

TAX MAP
CITY OF MARGATE

ATLANTIC COUNTY NEW JERSEY
 SCALE: AS NOTED DATE: 1-30-2004
CRAIG F. REMINGTON LAND SURVEYOR LIC. NO. 23924

REMINGTON, VERNICK & WALBERG ENGINEERS
 845 N. MAIN STREET, PLEASANTVILLE, NJ 08232
 (609) 645-7100, FAX (609) 645-7076
 WEB SITE ADDRESS: WWW.RVW.COM