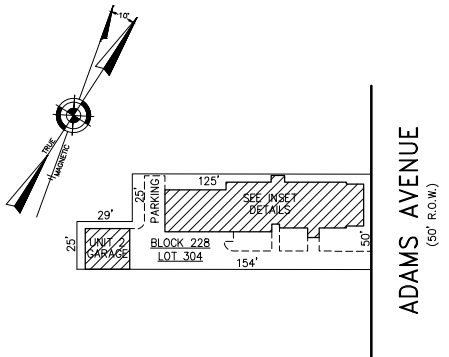
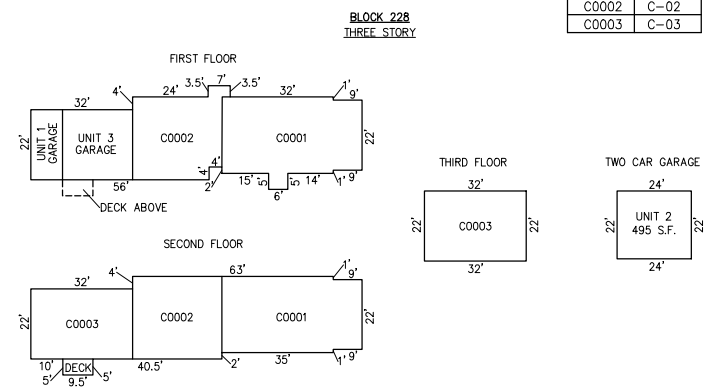


REVISIONS		
4-13-2007	CRAIG F. REMINGTON	23924



PLAN
SCALE: 1"=50'

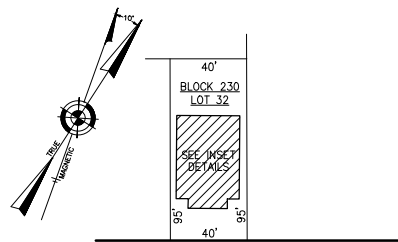
UNIT NO.	LOT NO.
C0001	C-01
C0002	C-02
C0003	C-03



DETAILS
SCALE: 1"=30'

BLOCK 228, LOT 304
RITON CONDOMINIUM
10 NORTH ADAMS AVENUE
INSET "YYYY"

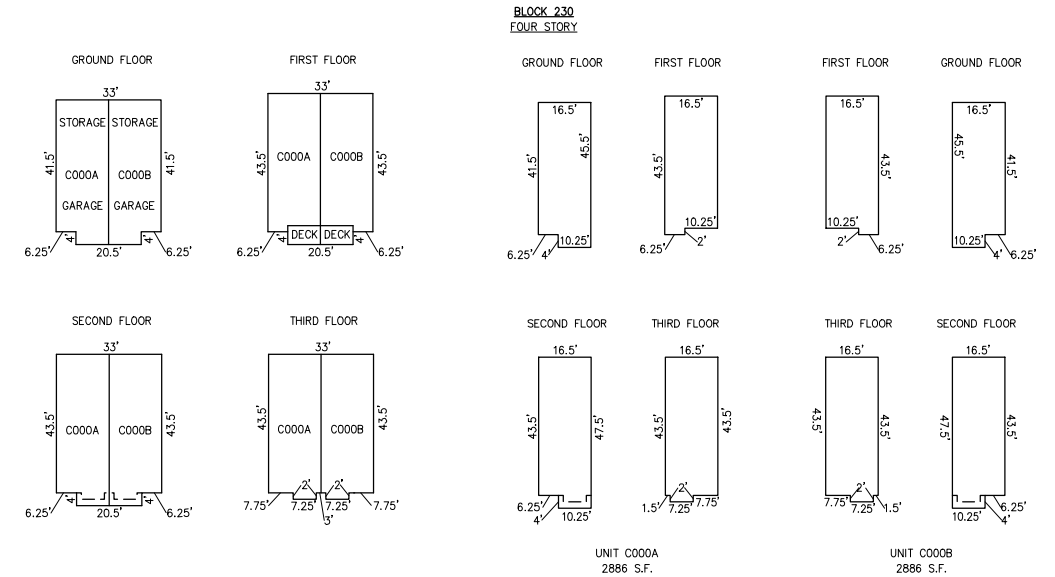
CONDOMINIUM DETAILS AND DIMENSIONS
BLOCK 228, LOT 304
BLOCK 230, LOT 32
BLOCK 328, LOT 415
BLOCK 329, LOT 406
SEE PLATE 5



VENTNOR AVENUE
(COUNTY ROUTE NO. 629)
(80' R.O.W.)

PLAN
SCALE: 1"=50'

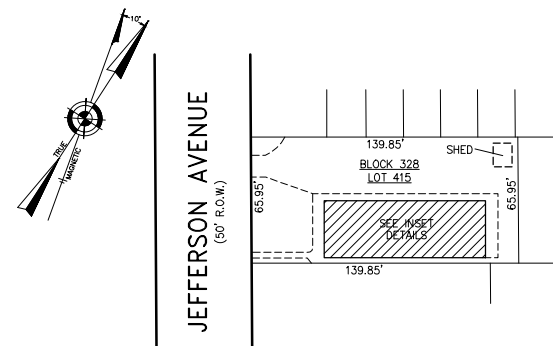
BLOCK 230, LOT 32
9613 CONDOMINIUM ASSOCIATION
9613 VENTNOR AVENUE
INSET "ZZZZ"



DETAILS
SCALE: 1"=30'

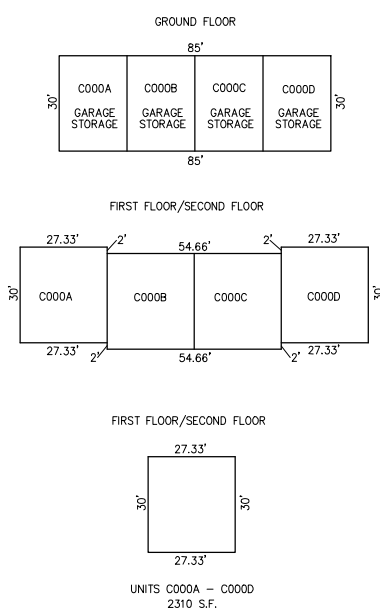
DETAILS
SCALE: 1"=30'

UNIT NO.	LOT NO.
C000A	C-01
C000B	C-02



PLAN
SCALE: 1"=50'

BLOCK 328
THREE STORY

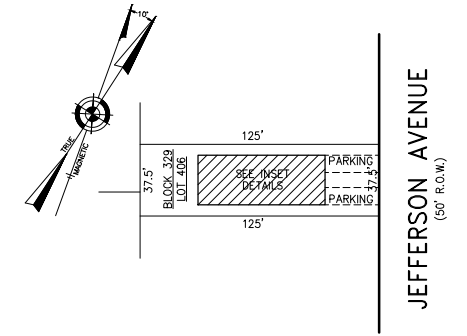


UNIT NO.	LOT NO.
C000A	C-01
C000B	C-02
C000C	C-03
C000D	C-04

DETAILS
SCALE: 1"=30'

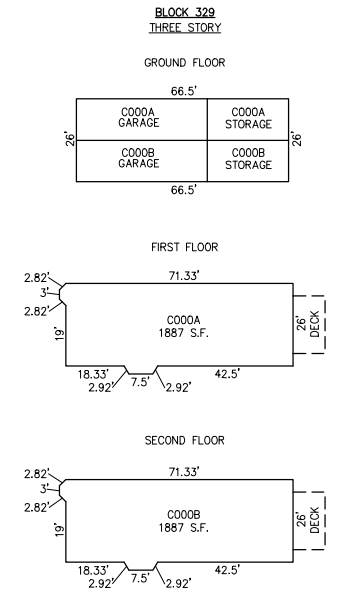
BLOCK 328, LOT 415
19 NORTH JEFFERSON CONDOMINIUM
19 NORTH JEFFERSON AVENUE
INSET "1 A"

NOTE: 1. DIMENSIONS AND SQUARE FOOTAGE ARE TYPICAL FOR FIRST AND SECOND FLOOR
2. DIMENSIONS AND SQUARE FOOTAGE ARE TYPICAL FOR SIMILAR UNITS



PLAN
SCALE: 1"=50'

BLOCK 329, LOT 406
110 NORTH JEFFERSON AVENUE CONDOMINIUM
110 NORTH JEFFERSON AVENUE
INSET "1 B"



UNIT NO.	LOT NO.
C000A	C-01
C000B	C-02

DETAILS
SCALE: 1"=30'

"THIS TAX MAP PLATE HAS BEEN DIGITALLY DRAWN USING COMPUTER-AIDED DRAFTING/DESIGN (CADD) & COORDINATE GEOMETRY (COGO). IT IS BASED ON THE ORIGINAL DIGITALLY DRAWN TAX MAP PLATE BEARING THE OFFICIAL NEW JERSEY DIVISION TAXATION APPROVAL STAMP WITH APPROVAL DATE 6-3-2005 SERIAL NUMBER 846 AND SIGNATURES OF SIGNERS' THOMAS J. REILLY, CHIEF, LOCAL PROPERTY, FIELD ASSISTANCE. SANTO C. DIDONATO, SUPERVISING FIELD REPRESENTATIVE. THE ORIGINAL DIGITALLY DRAWN TAX MAP PLATE WITH THE OFFICIAL APPROVAL STAMP IS ON FILE WITH REMINGTON, VERNICK & WALBERG ENGINEERS."

TAX MAP
CITY OF MARGATE

ATLANTIC COUNTY NEW JERSEY
SCALE: AS NOTED DATE: 1-30-2004

CRAIG F. REMINGTON LAND SURVEYOR LIC. NO. 23924



REMINGTON, VERNICK & WALBERG ENGINEERS
24 GA 28048700
845 N. MAIN STREET, PLEASANTVILLE, N.J. 08232
(609) 645-7100, FAX (609) 645-7076
WEB SITE ADDRESS: WWW.RVW.COM