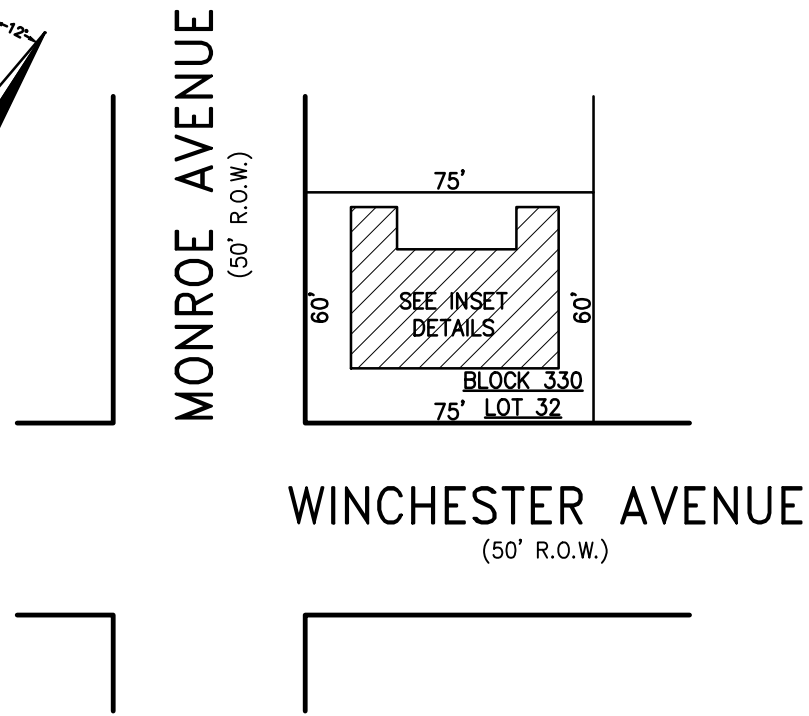
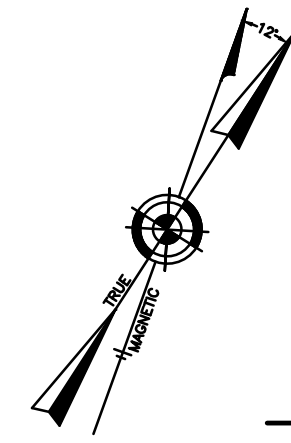
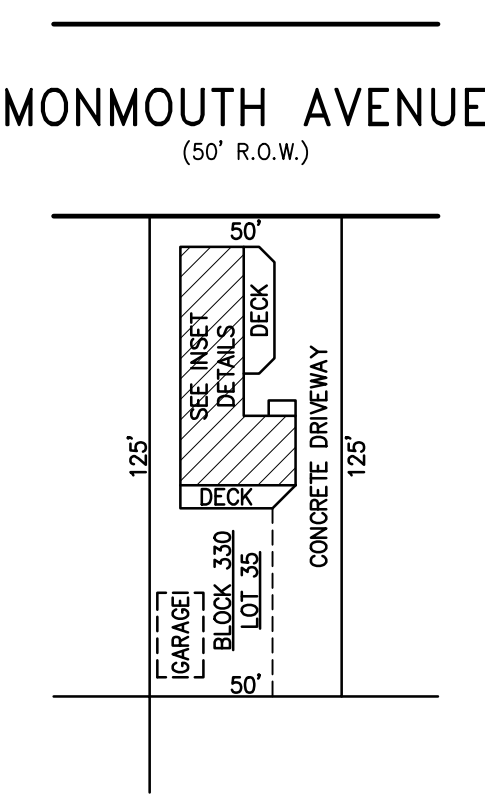
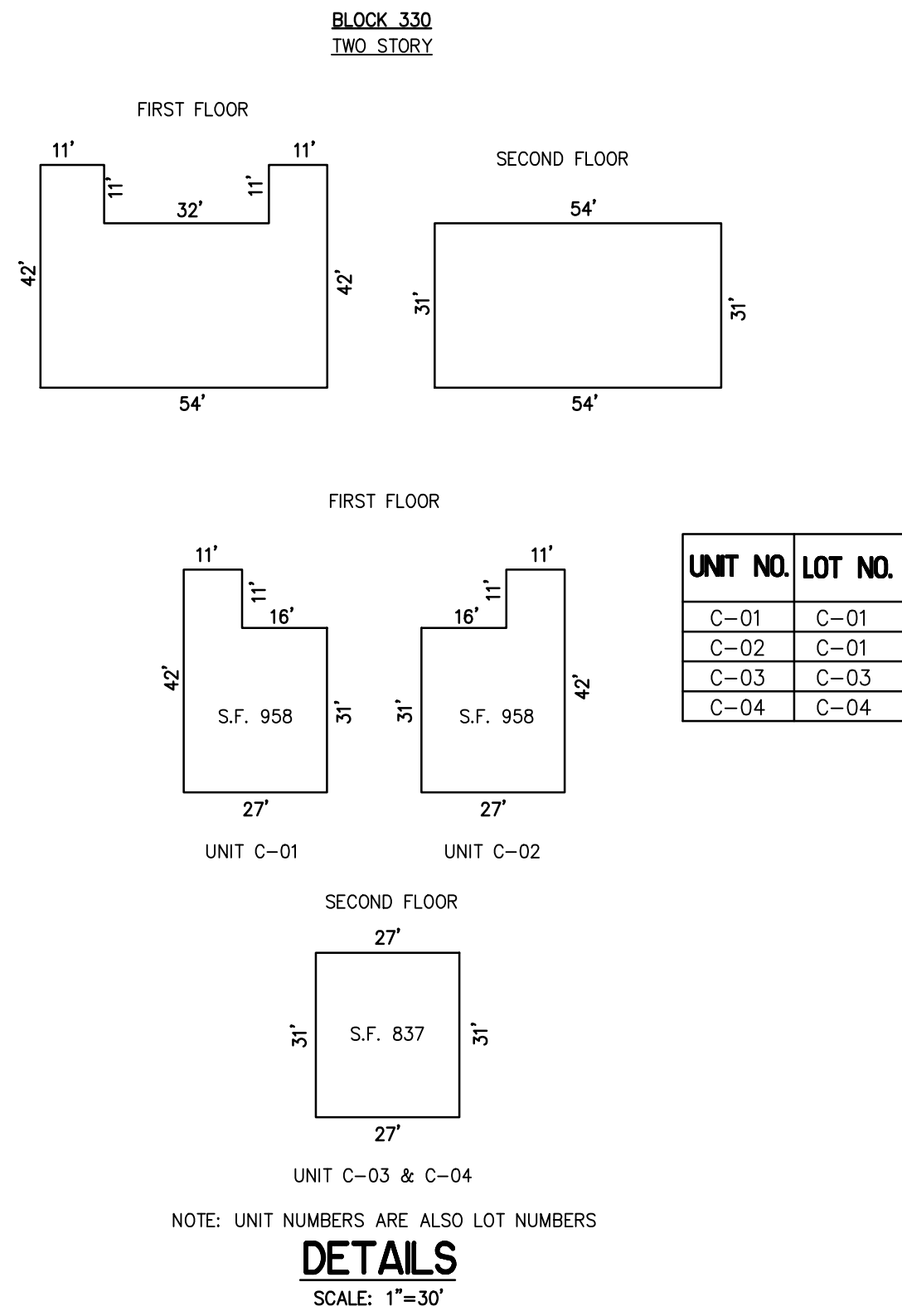


REVISIONS		
1-29-2019	CHARLES E. ADAMSON	42627



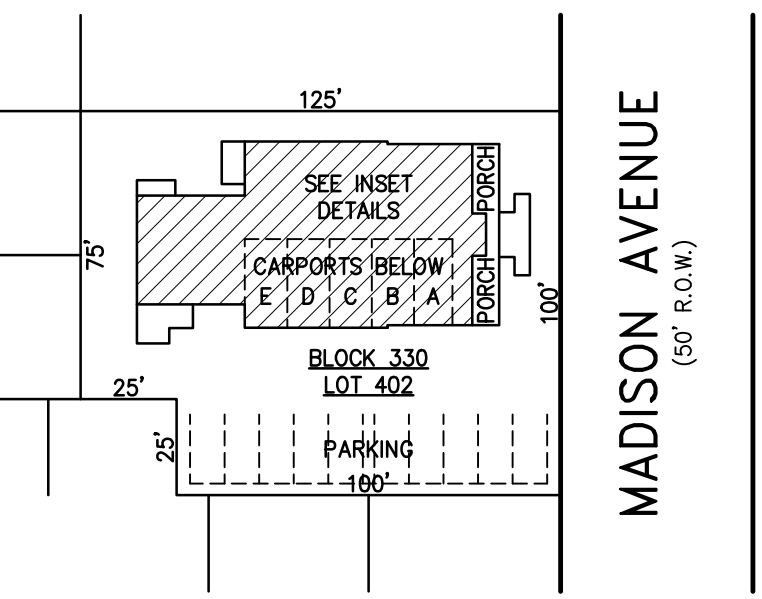
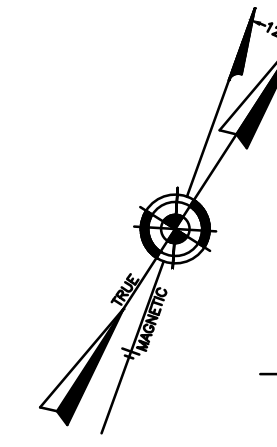
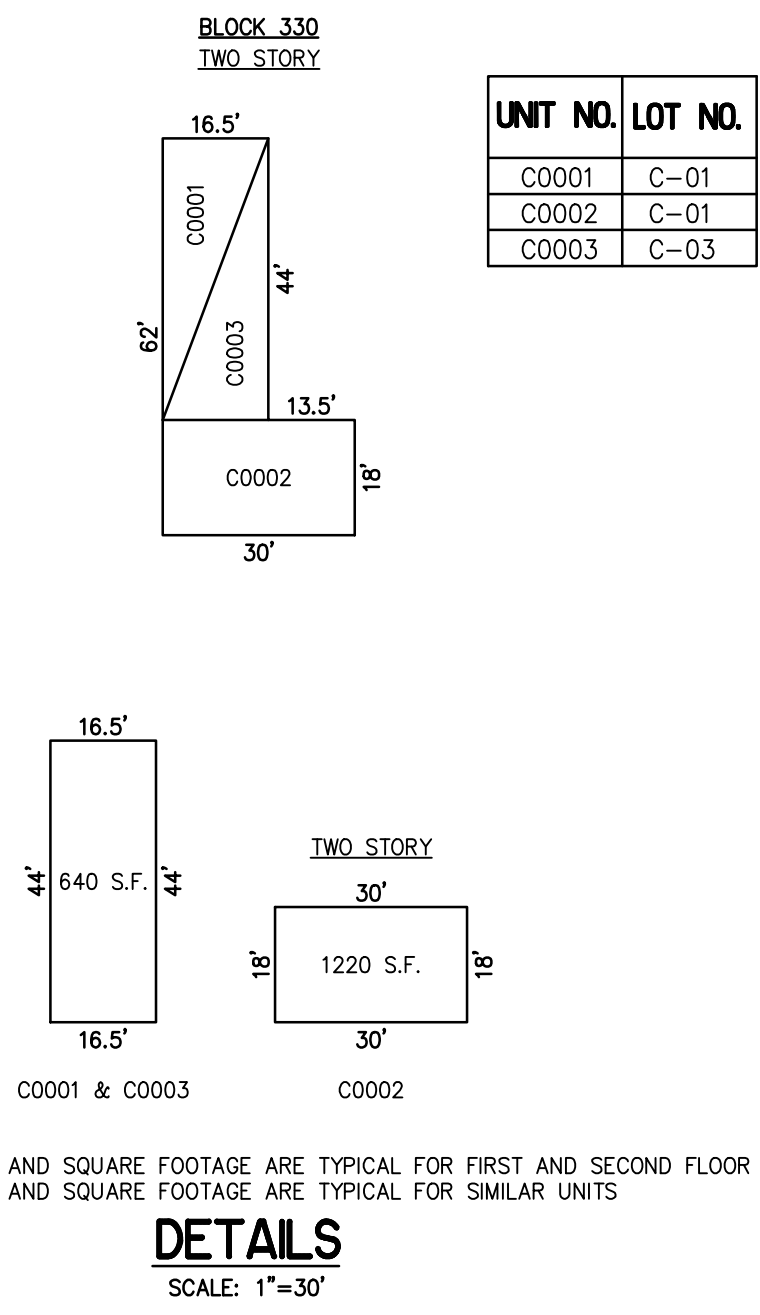
PLAN
SCALE: 1"=50'

BLOCK 330, LOT 32
GERARD CONDOMINIUM
9613-15 WINCHESTER AVENUE
INSET "VVV"



PLAN
SCALE: 1"=50'

BLOCK 330, LOT 35
9610 MONMOUTH CONDOMINIUM
9610 MONMOUTH AVENUE
INSET "XXX"

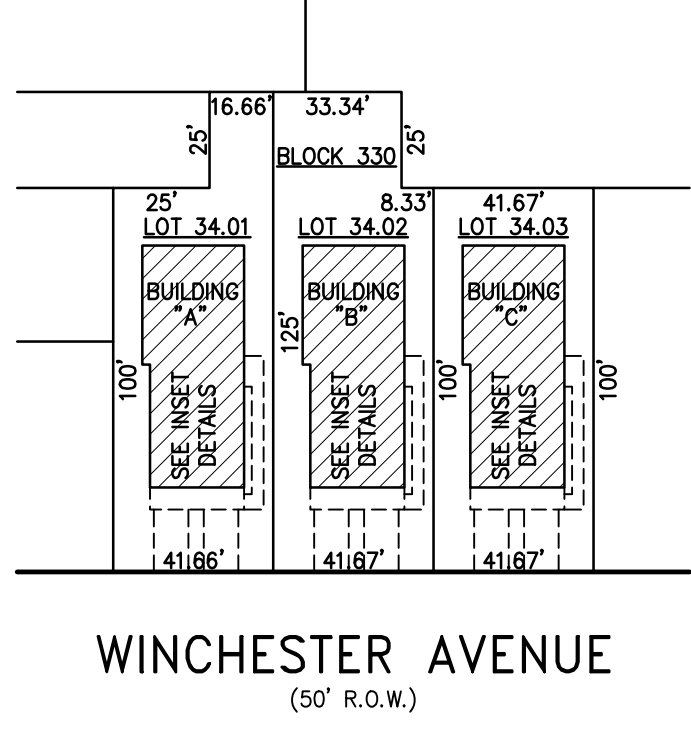
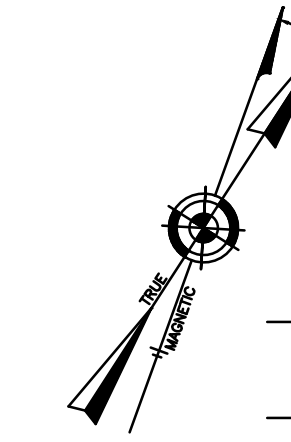


PLAN
SCALE: 1"=50'

UNIT NO.	LOT NO.
C000A	C-01
C000B	C-02
C000C	C-03
C000D	C-04
C000E	C-05

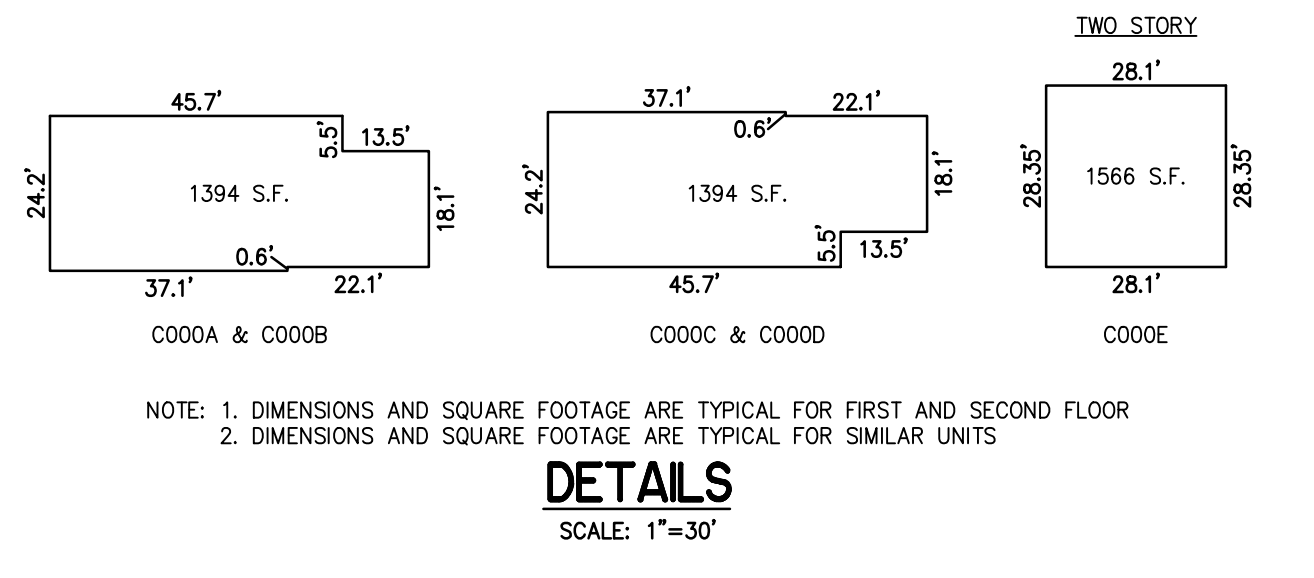
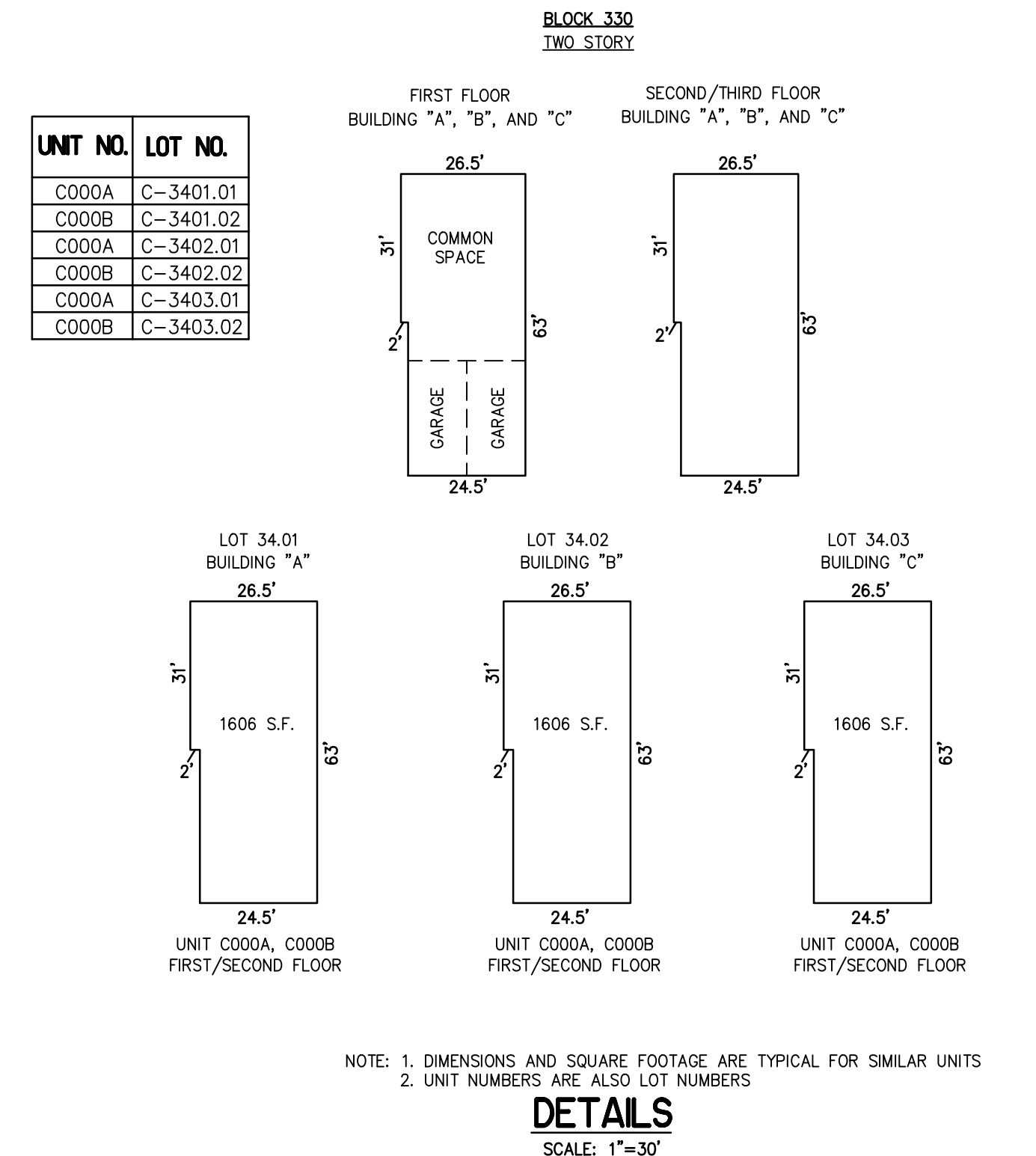
DETAILS
SCALE: 1"=30'

NOTE: 1. DIMENSIONS AND SQUARE FOOTAGE ARE TYPICAL FOR FIRST AND SECOND FLOOR
2. DIMENSIONS AND SQUARE FOOTAGE ARE TYPICAL FOR SIMILAR UNITS



PLAN
SCALE: 1"=50'

BLOCK 330, LOT 34.01, 34.02, 34.03
WINCHESTER I, II, III CONDOMINIUM
9611, 9609, & 9607 WINCHESTER AVENUE
INSET "WWW"



BLOCK 330, LOT 402
BEACHVIEW CONDOMINIUM
106 NORTH MADISON AVENUE
INSET "YYY"

CONDOMINIUM DETAILS AND DIMENSIONS
BLOCK 330, LOT 32
BLOCK 330, LOT 34.01, 34.02, 34.03
BLOCK 330, LOT 35
BLOCK 330, LOT 402
BLOCK 331, LOT 24
SEE PLATE 5

"THIS TAX MAP PLATE HAS BEEN DIGITALLY DRAWN USING COMPUTER-AIDED DRAFTING/DESIGN (CADD) & COORDINATE GEOMETRY (COGO). IT IS BASED ON THE ORIGINAL DIGITALLY DRAWN TAX MAP PLATE BEARING THE OFFICIAL NEW JERSEY DIVISION TAXATION APPROVAL STAMP WITH APPROVAL DATE 6-3-2005 SERIAL NUMBER 846 AND SIGNATURES OF SIGNERS THOMAS J. REILLY, CHIEF, LOCAL PROPERTY, FIELD ASSISTANCE, SANTO C. DIDONATO, SUPERVISING FIELD REPRESENTATIVE. THE ORIGINAL DIGITALLY DRAWN TAX MAP PLATE WITH THE OFFICIAL APPROVAL STAMP IS ON FILE WITH REMINGTON, VERNICK & WALBERG ENGINEERS."

TAX MAP
CITY OF MARGATE
ATLANTIC COUNTY NEW JERSEY
SCALE: AS NOTED DATE: 1-30-2004

CRAIG F. REMINGTON LAND SURVEYOR LIC. NO. 23924

RV & W
REMINGTON, VERNICK & WALBERG ENGINEERS
24 GA 28048700
845 N. MAIN STREET, PLEASANTVILLE, N.J. 08232
(609) 645-7100, FAX (609) 645-7076
WEB SITE ADDRESS: WWW.RVWE.COM