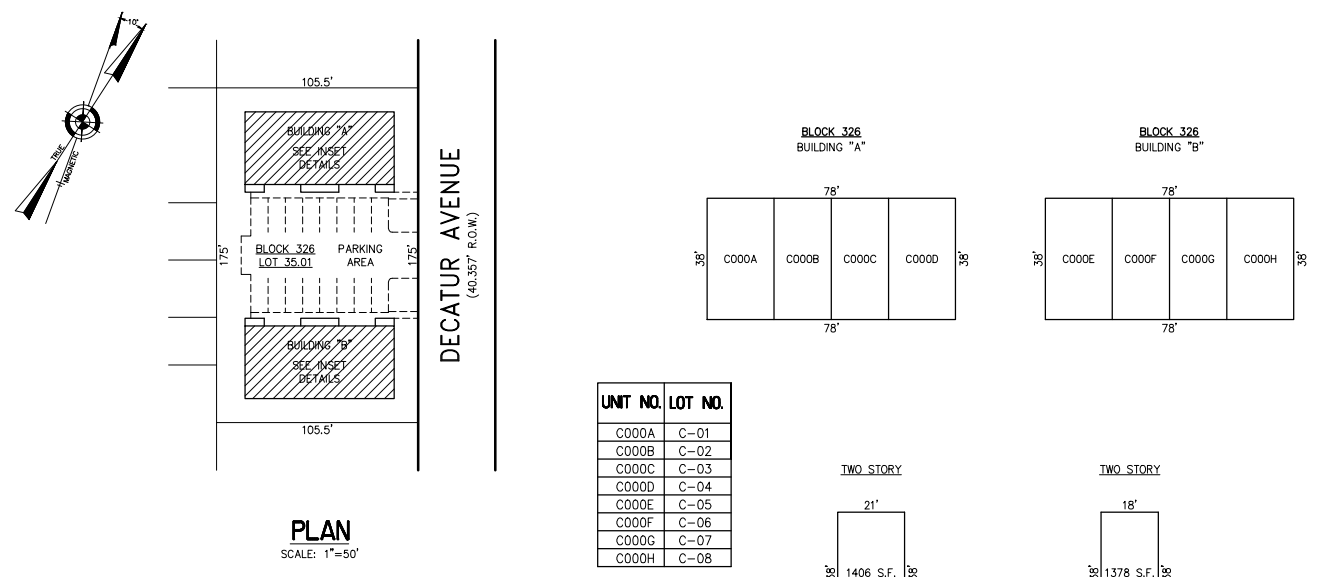
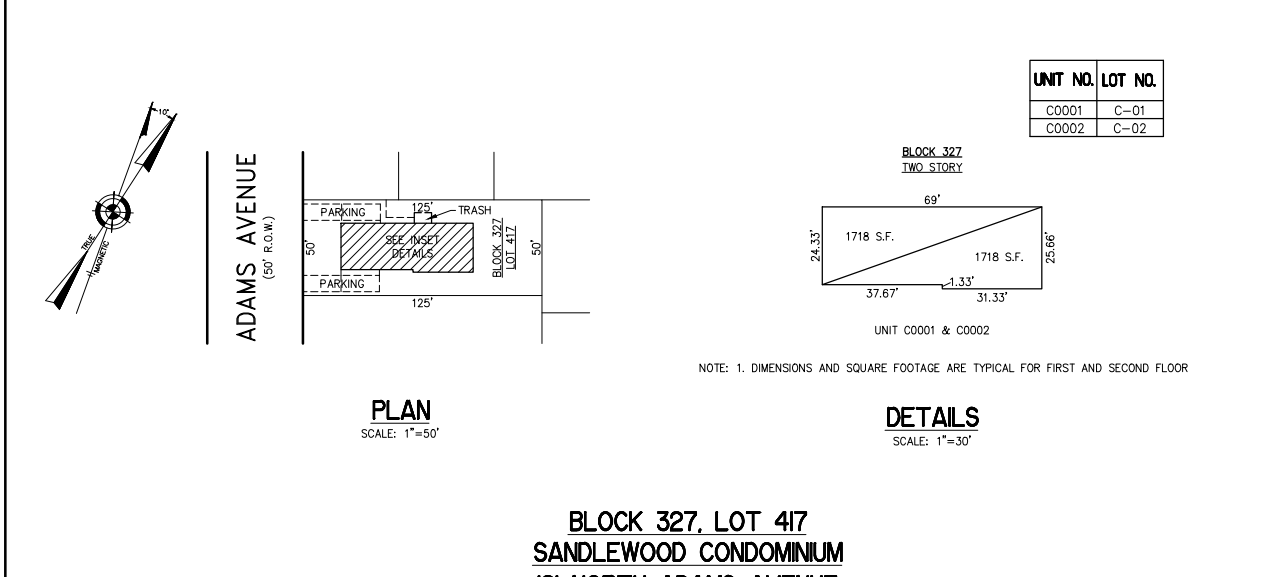


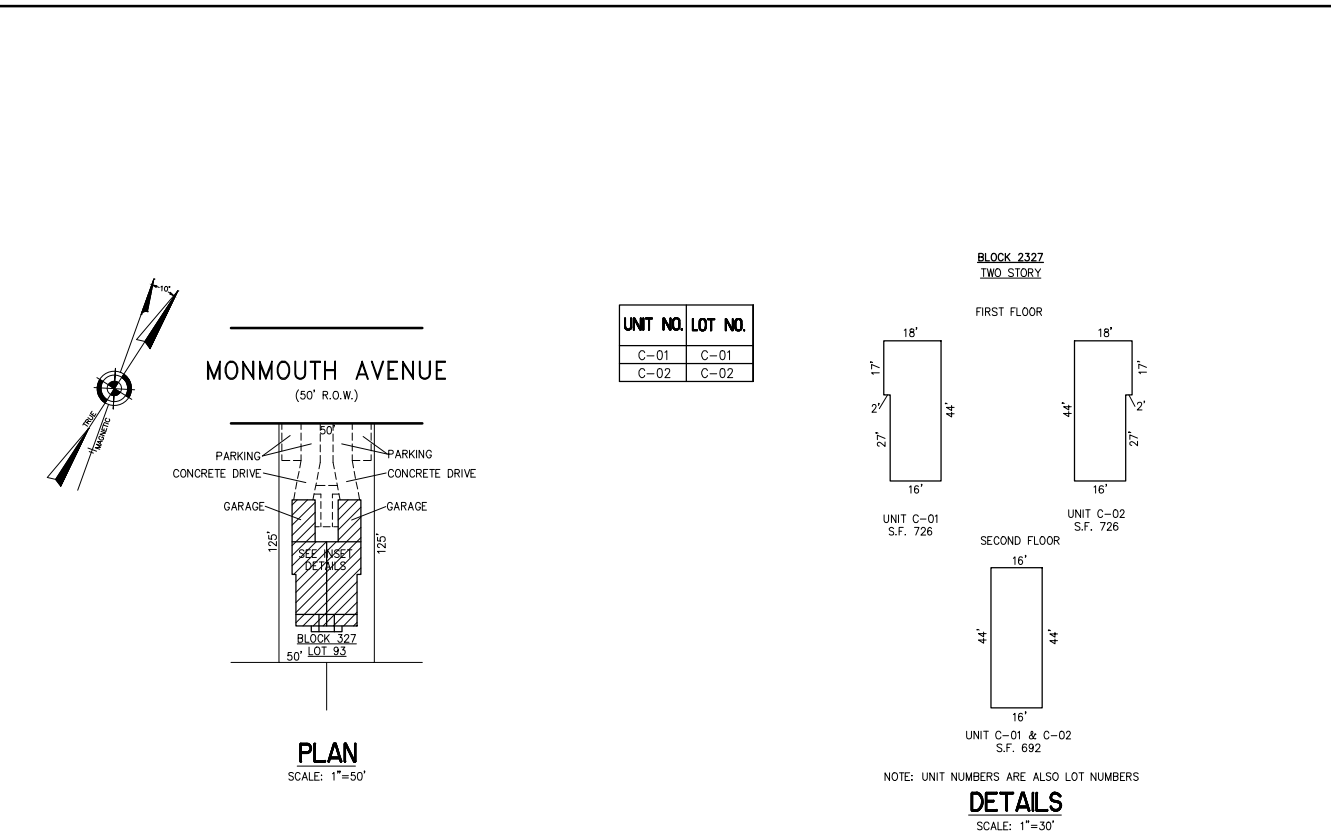
REVISIONS	



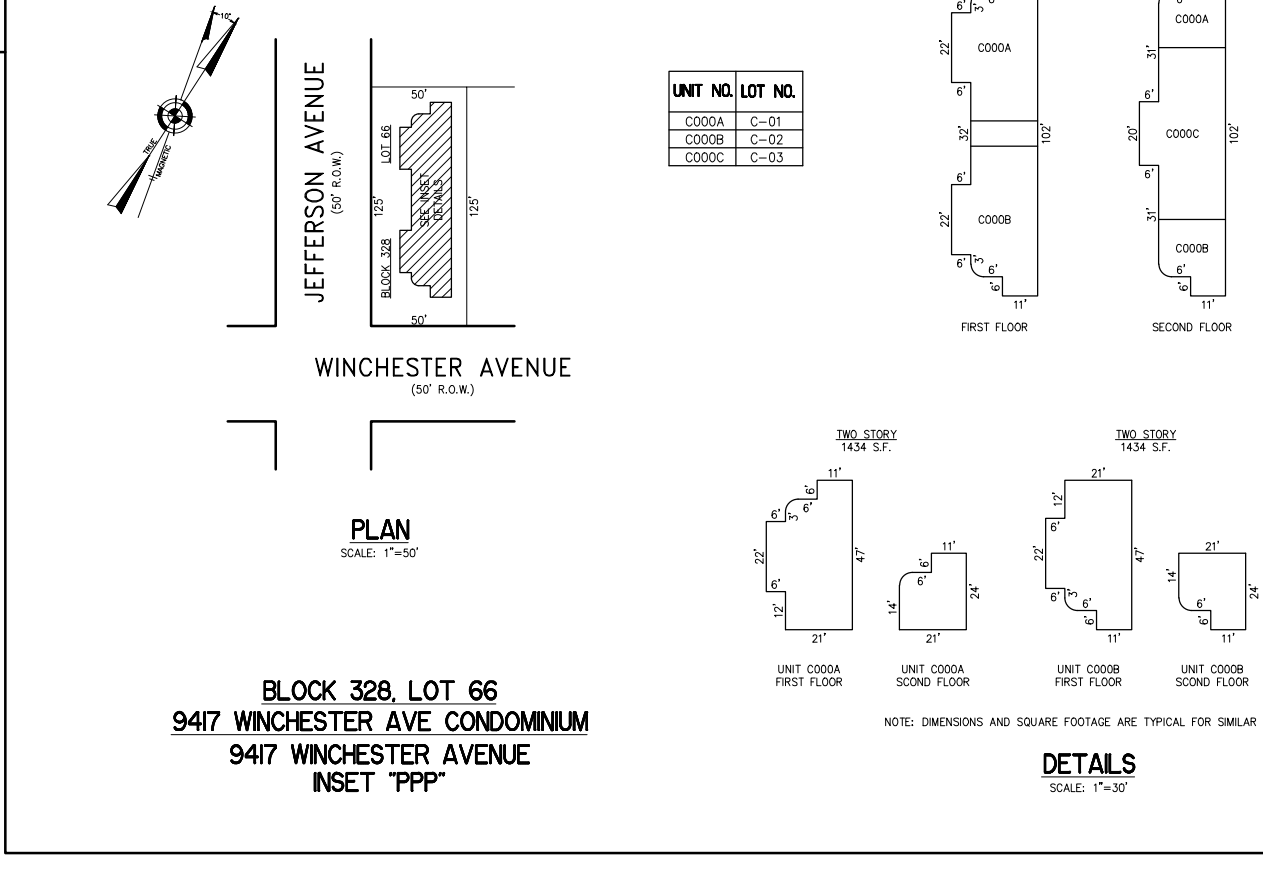
**BLOCK 326, LOT 35.01**  
**DECATUR COURT TOWNHOUSES CONDOMINIUM**  
**110 NORTH DECATUR AVENUE**  
**INSET "MMM"**



**BLOCK 327, LOT 417**  
**SANDLEWOOD CONDOMINIUM**  
**121 NORTH ADAMS AVENUE**  
**INSET "000"**



**BLOCK 327, LOT 93**  
**9308-10 MONMOUTH CONDOMINIUM**  
**9308-10 MONMOUTH AVENUE**  
**INSET "NNN"**



**BLOCK 328, LOT 66**  
**9417 WINCHESTER AVE CONDOMINIUM**  
**9417 WINCHESTER AVENUE**  
**INSET "PPP"**

CONDOMINIUM DETAILS AND DIMENSIONS  
BLOCK 326, LOT 35.01  
BLOCK 327, LOT 93  
BLOCK 327, LOT 417  
BLOCK 328, LOT 66  
SEE PLATE 5

"THIS TAX MAP PLATE HAS BEEN DIGITALLY DRAWN USING COMPUTER-AIDED DRAFTING/DESIGN (CADD) & COORDINATE GEOMETRY (COGO). IT IS BASED ON THE ORIGINAL DIGITALLY DRAWN TAX MAP PLATE BEARING THE OFFICIAL NEW JERSEY DIVISION TAXATION APPROVAL STAMP WITH APPROVAL DATE 6-3-2005 SERIAL NUMBER 846 AND SIGNATURES OF SIGNERS' THOMAS J. REILLY, CHIEF, LOCAL PROPERTY, FIELD ASSISTANCE. SANTO C. DIDONATO, SUPERVISING FIELD REPRESENTATIVE. THE ORIGINAL DIGITALLY DRAWN TAX MAP PLATE WITH THE OFFICIAL APPROVAL STAMP IS ON FILE WITH REMINGTON, VERNICK & WALBERG ENGINEERS."

**TAX MAP**  
**CITY OF MARGATE**  
ATLANTIC COUNTY NEW JERSEY  
SCALE: AS NOTED DATE: 1-30-2004

**CRAIG F. REMINGTON LAND SURVEYOR LIC. NO. 23924**

**REMINGTON, VERNICK & WALBERG ENGINEERS**  
24 GA 28048700  
845 N. MAIN STREET, PLEASANTVILLE, NJ 08232  
(609) 645-7100 FAX (609) 645-7076  
WEB SITE ADDRESS: WWW.RVW.COM