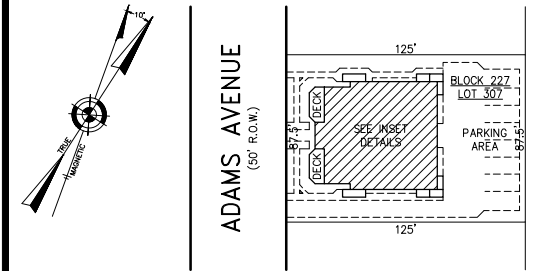
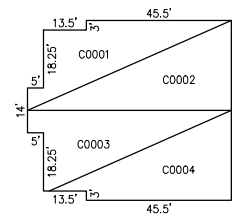


REVISIONS		
1-30-2017	CHARLES E. ADAMSON	42627

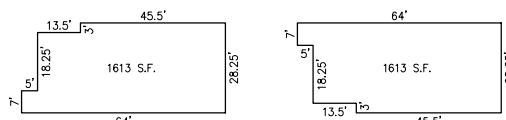


PLAN
SCALE: 1"=50'

UNIT NO.	LOT NO.
C0001	C-01
C0002	C-02
C0003	C-03
C0004	C-04



NOTE: UNIT NUMBERS ARE ALSO LOT NUMBERS

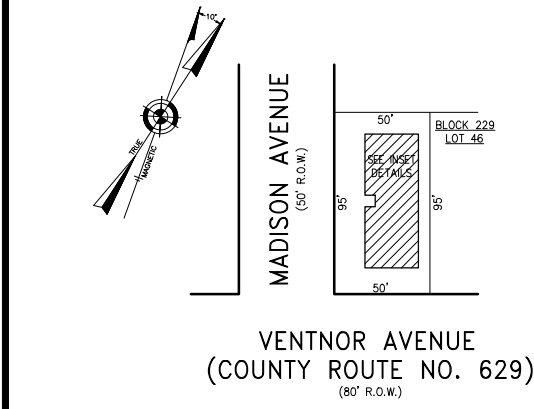


UNIT C0001, C0002 UNIT C0003, C0004

NOTE: 1. DIMENSIONS AND SQUARE FOOTAGE ARE TYPICAL FOR FIRST AND SECOND FLOOR
2. DIMENSIONS AND SQUARE FOOTAGE ARE TYPICAL FOR SIMILAR UNITS

DETAILS
SCALE: 1"=30'

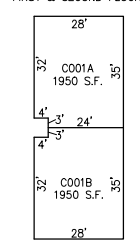
BLOCK 227, LOT 307
NORTH ADAMS AVENUE CONDOMINIUM
9 NORTH ADAMS AVENUE
INSET "XX"



PLAN
SCALE: 1"=50'

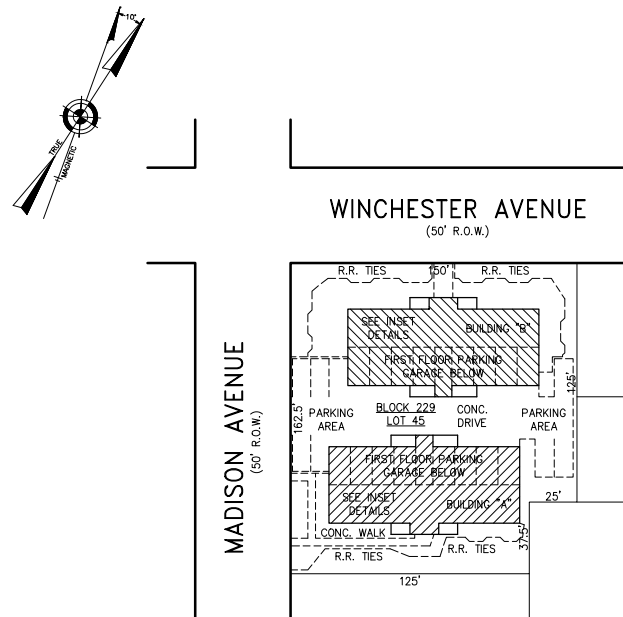
BLOCK 229, LOT 46
1 NORTH MADISON AVENUE CONDOMINIUM
1 NORTH MADISON AVENUE
INSET "ZZ"

BLOCK 229, LOT 46
TWO STORY
FIRST & SECOND FLOORS



DETAILS
SCALE: 1"=30'

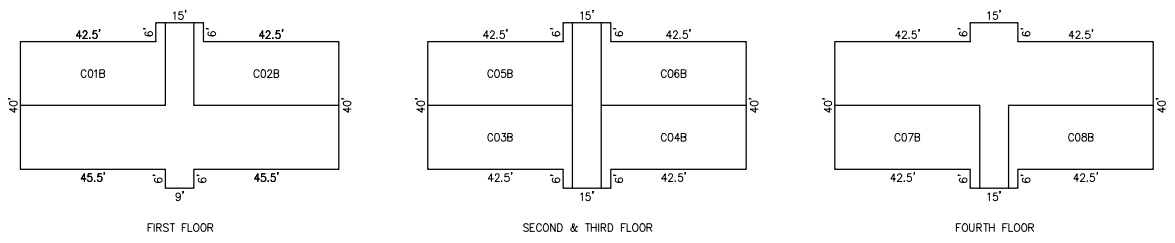
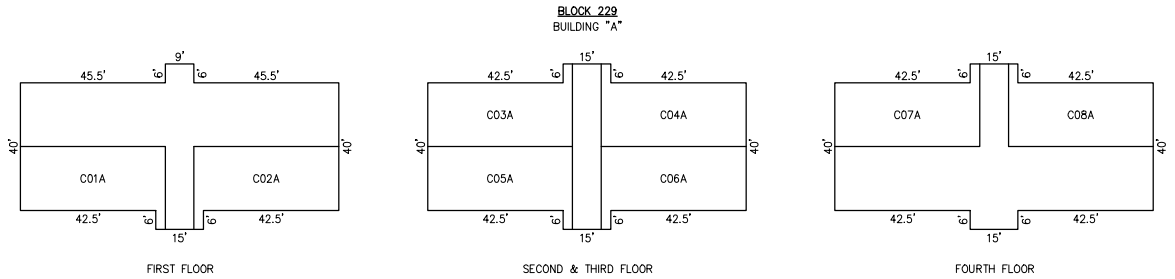
UNIT NO.	LOT NO.
C001A	C-01.01
C001B	C-01.02



PLAN
SCALE: 1"=50'

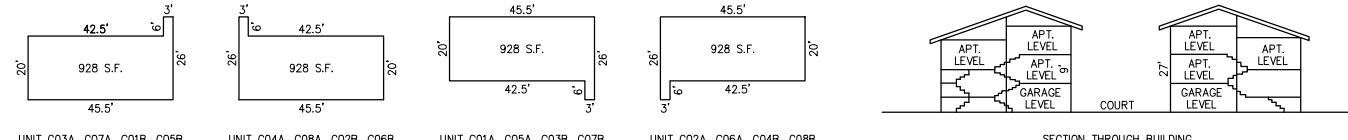
BLOCK 229, LOT 45
MADISON HOUSE CONDOMINIUM
25 NORTH MADISON AVENUE
INSET "YY"

UNIT NO.	LOT NO.
C01A	C-1.01
C01B	C-1.02
C02A	C-2.01
C02B	C-2.02
C03A	C-3.01
C03B	C-3.02
C04A	C-4.01
C04B	C-4.02
C05A	C-5.01
C05B	C-5.02
C06A	C-6.01
C06B	C-6.02
C07A	C-7.01
C07B	C-7.02
C08A	C-8.01
C08B	C-8.02



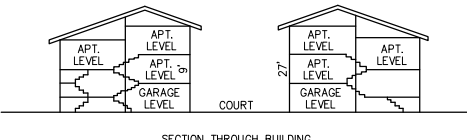
NOTE: UNIT NUMBERS ARE ALSO LOT NUMBERS

DETAILS
SCALE: 1"=30'

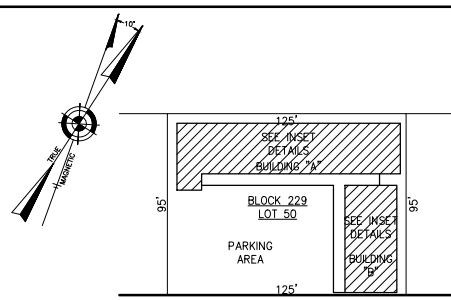


NOTE: 1. DIMENSIONS AND SQUARE FOOTAGE ARE TYPICAL FOR ALL FLOORS
2. DIMENSIONS AND SQUARE FOOTAGE ARE TYPICAL FOR SIMILAR UNITS

DETAILS
SCALE: 1"=30'

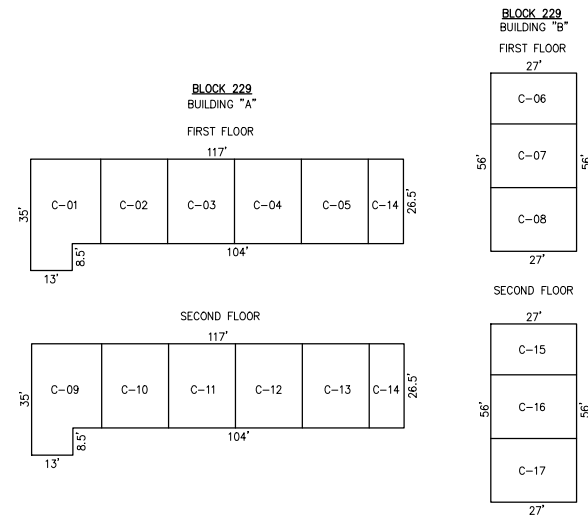


SECTION THROUGH BUILDING



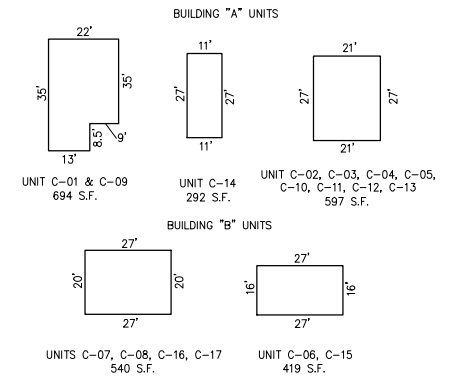
PLAN
SCALE: 1"=50'

BLOCK 229, LOT 50
CASABLANCA CONDOMINIUM
9505 VENTNOR AVENUE
INSET "AAA"



NOTE: DIMENSIONS AND SQUARE FOOTAGE ARE TYPICAL FOR ALL FLOORS

DETAILS
SCALE: 1"=30'



UNIT NO.	LOT NO.
C-01	C-50.01
C-02	C-50.02
C-03	C-50.03
C-04	C-50.04
C-05	C-50.05
C-06	C-50.06
C-07	C-50.07
C-08	C-50.08
C-09	C-50.09
C-10	C-50.10
C-11	C-50.11
C-12	C-50.12
C-13	C-50.13
C-14	C-50.14
C-15	C-50.15
C-16	C-50.16
C-17	C-50.17
C-18	C-50.18
C-19	C-50.19
C-20	C-50.20

DETAILS
SCALE: 1"=30'

CONDOMINIUM DETAILS AND DIMENSIONS
BLOCK 227, LOT 307
BLOCK 229, LOT 45
BLOCK 229, LOT 46
BLOCK 229, LOT 50
SEE PLATE 5

"THIS TAX MAP PLATE HAS BEEN DIGITALLY DRAWN USING COMPUTER-AIDED DRAFTING/DESIGN (CADD) & COORDINATE GEOMETRY (COGO). IT IS BASED ON THE ORIGINAL DIGITALLY DRAWN TAX MAP PLATE BEARING THE OFFICIAL NEW JERSEY DIVISION TAXATION APPROVAL STAMP WITH APPROVAL DATE 6-3-2005 SERIAL NUMBER 846 AND SIGNATURES OF SIGNERS THOMAS J. REILLY, CHIEF, LOCAL PROPERTY, FIELD ASSISTANCE; SANTO C. DIDONATO, SUPERVISING FIELD REPRESENTATIVE. THE ORIGINAL DIGITALLY DRAWN TAX MAP PLATE WITH THE OFFICIAL APPROVAL STAMP IS ON FILE WITH REMINGTON, VERNICK & WALBERG ENGINEERS."

TAX MAP
CITY OF MARGATE

ATLANTIC COUNTY NEW JERSEY
SCALE: AS NOTED DATE: 1-30-2004

CRAIG F. REMINGTON LAND SURVEYOR LIC. NO. 23924



REMINGTON, VERNICK & WALBERG ENGINEERS
24 GA 28048700
845 N. MAN STREET, PLEASANTVILLE, NJ 08232
(609) 645-710. FAX (609) 645-7076
WEB SITE ADDRESS: WWW.RVE.COM