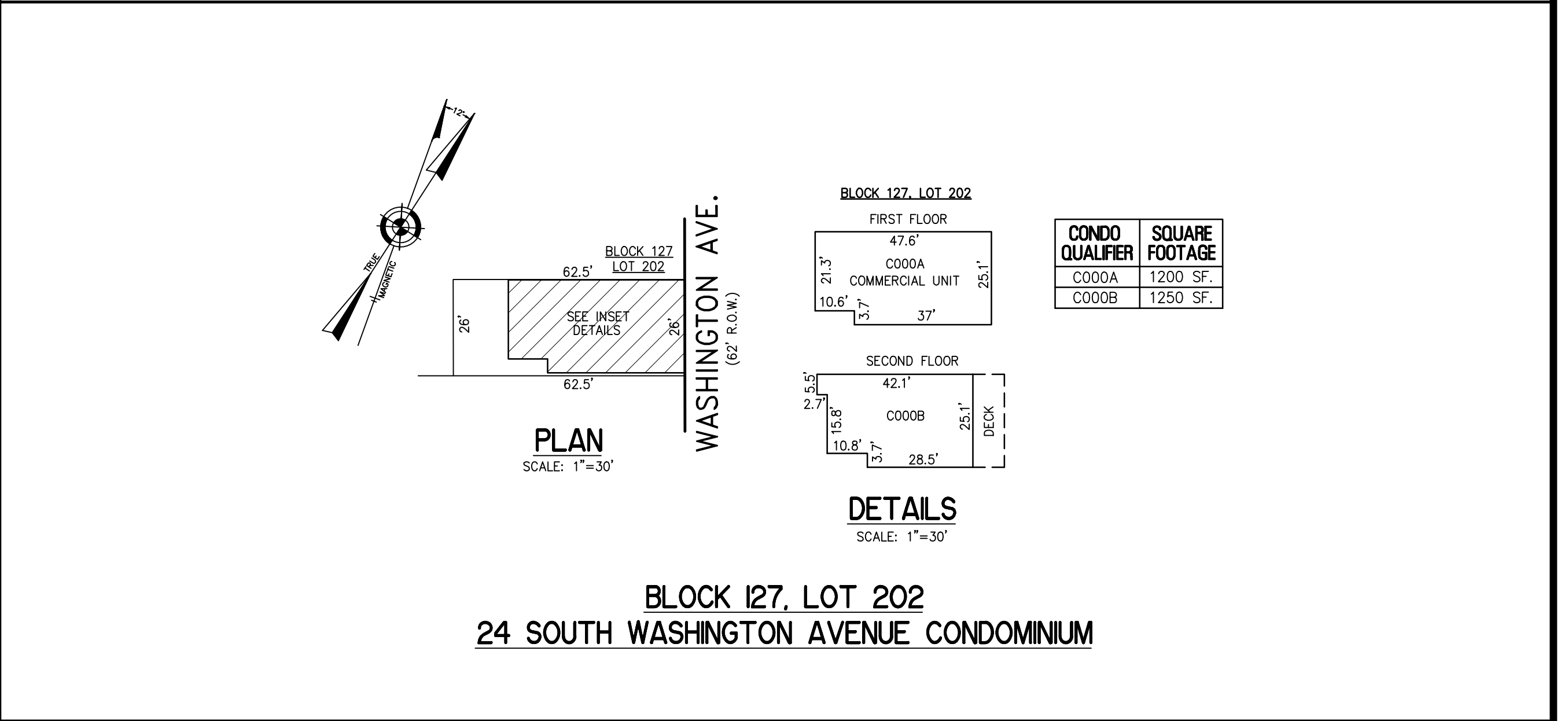
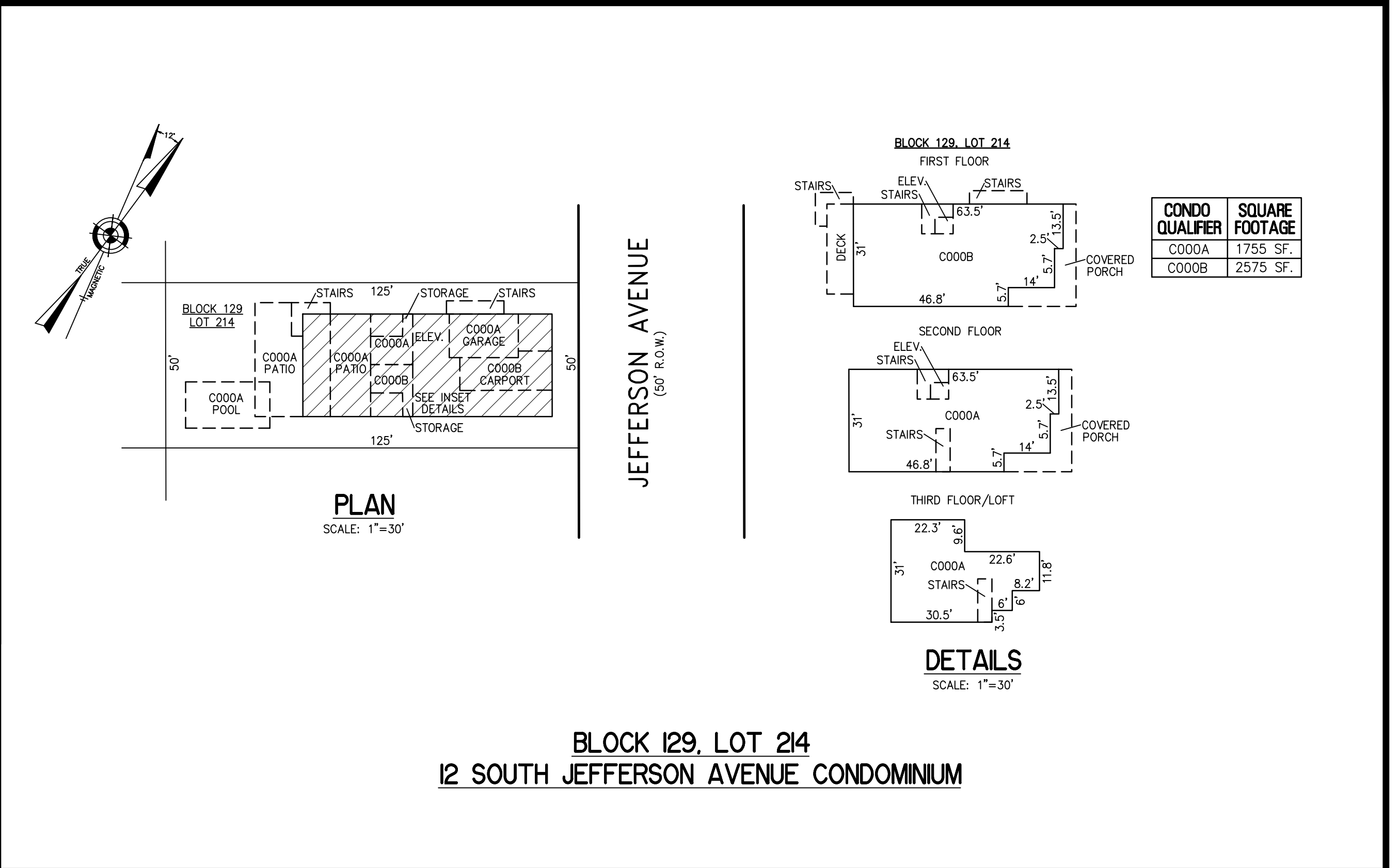
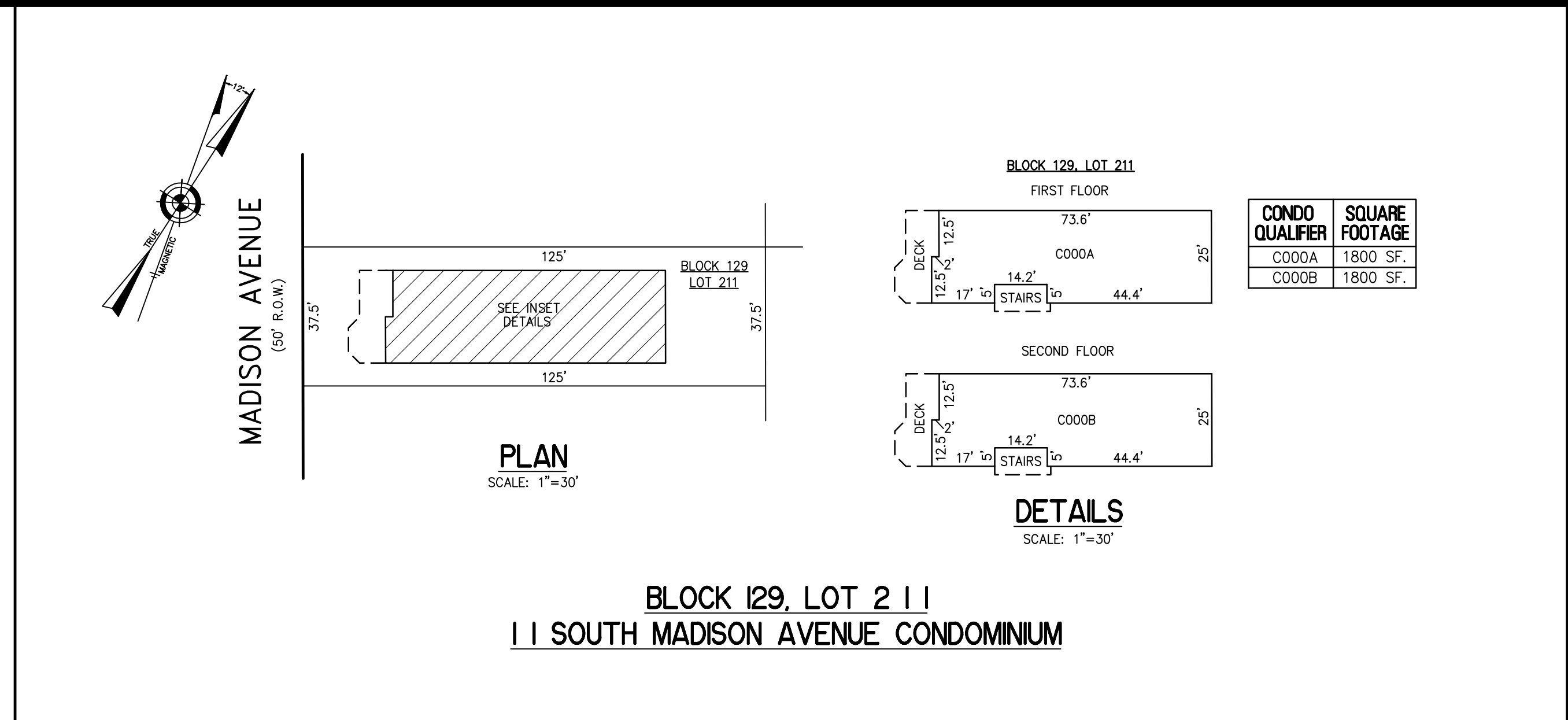


REVISIONS		
4-1-2021	CHARLES E. ADAMSON	42627



CONDOMINIUM DETAILS AND DIMENSIONS
 BLOCK 127, LOT 202
 BLOCK 129, LOT 211
 BLOCK 129, LOT 214
 SEE PLATE 4



TAX MAP
CITY OF MARGATE
 ATLANTIC COUNTY NEW JERSEY
 SCALE: AS NOTED DATE: 3-17-2018

CRAIG F. REMINGTON LAND SURVEYOR LIC. NO. 23924

RV & W

REMINGTON, VERNICK & WALBERG ENGINEERS
 24 GA 28048700
 845 N. MAIN STREET, PLEASANTVILLE, N.J. 08232
 (609) 645-7100, FAX (609) 645-7076
 WEB SITE ADDRESS: WWW.RVE.COM