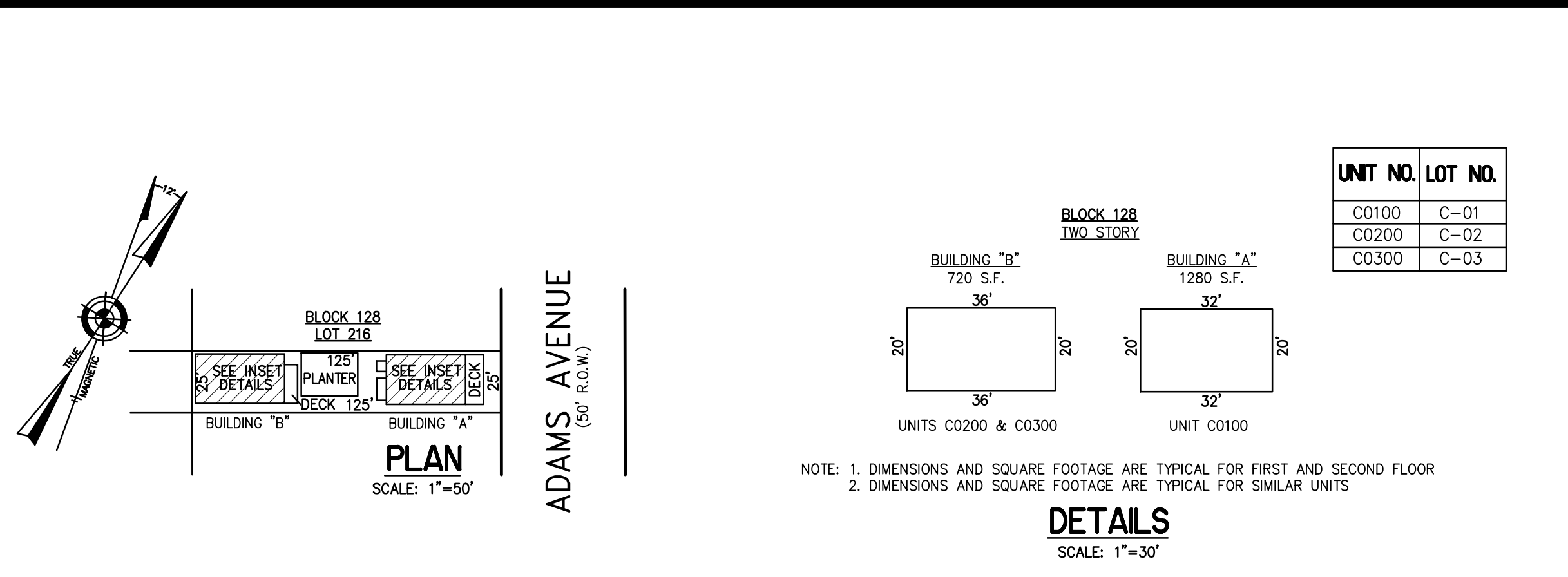
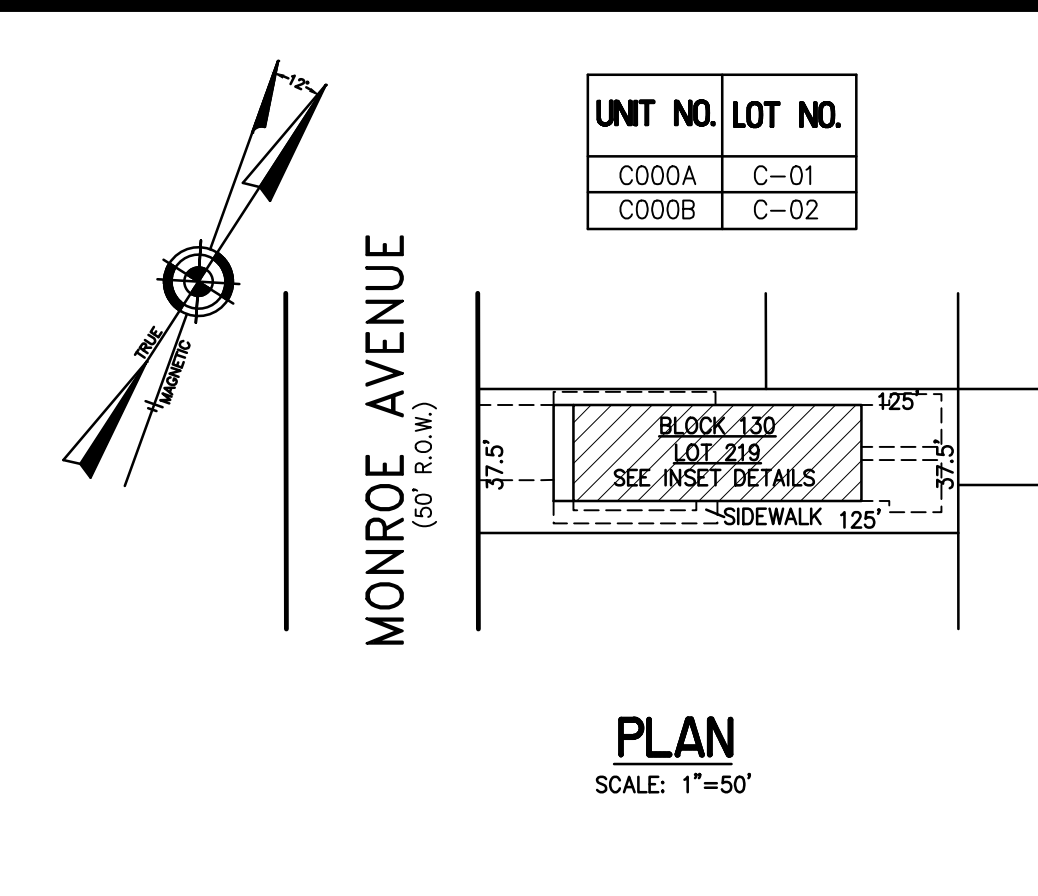


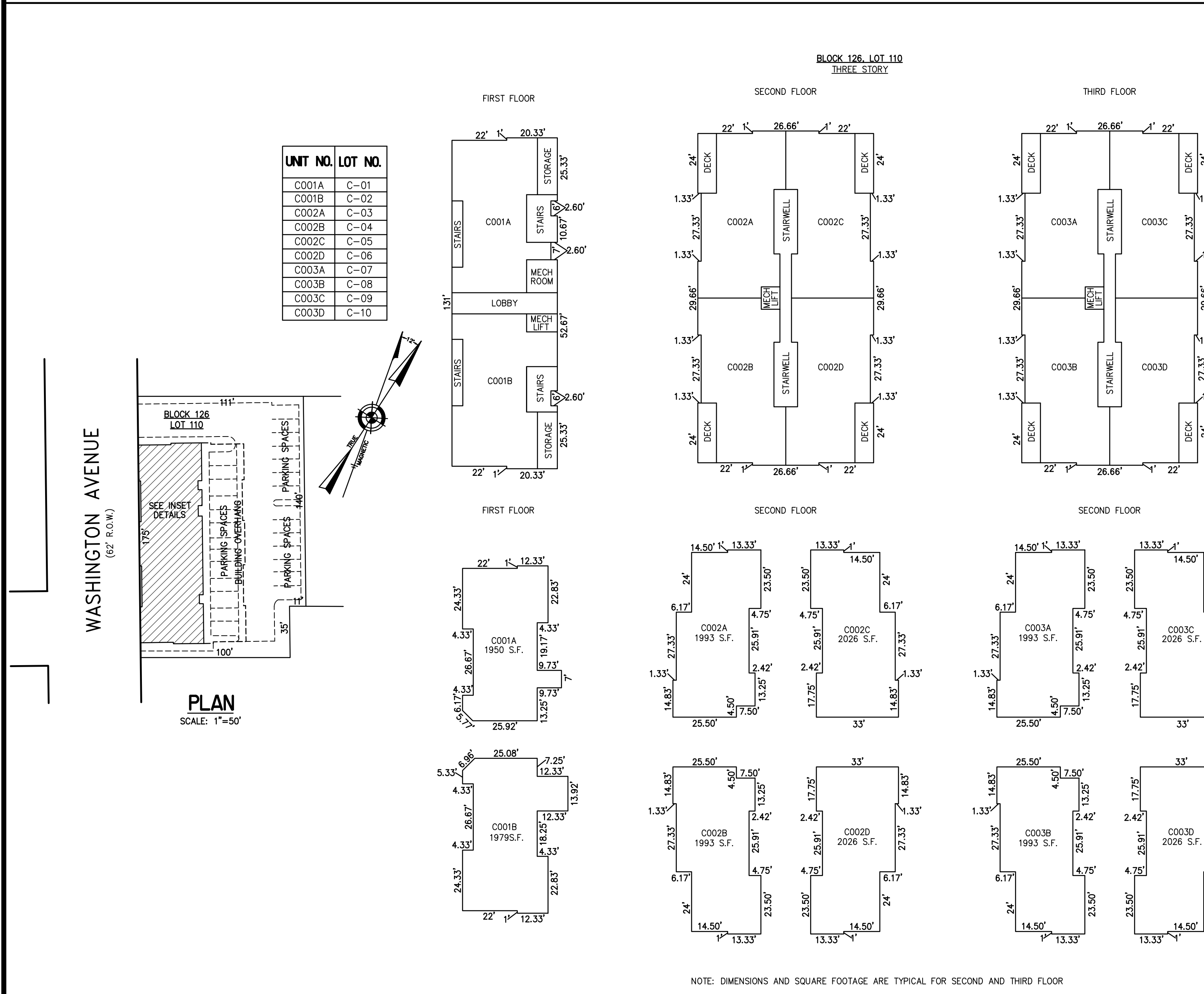
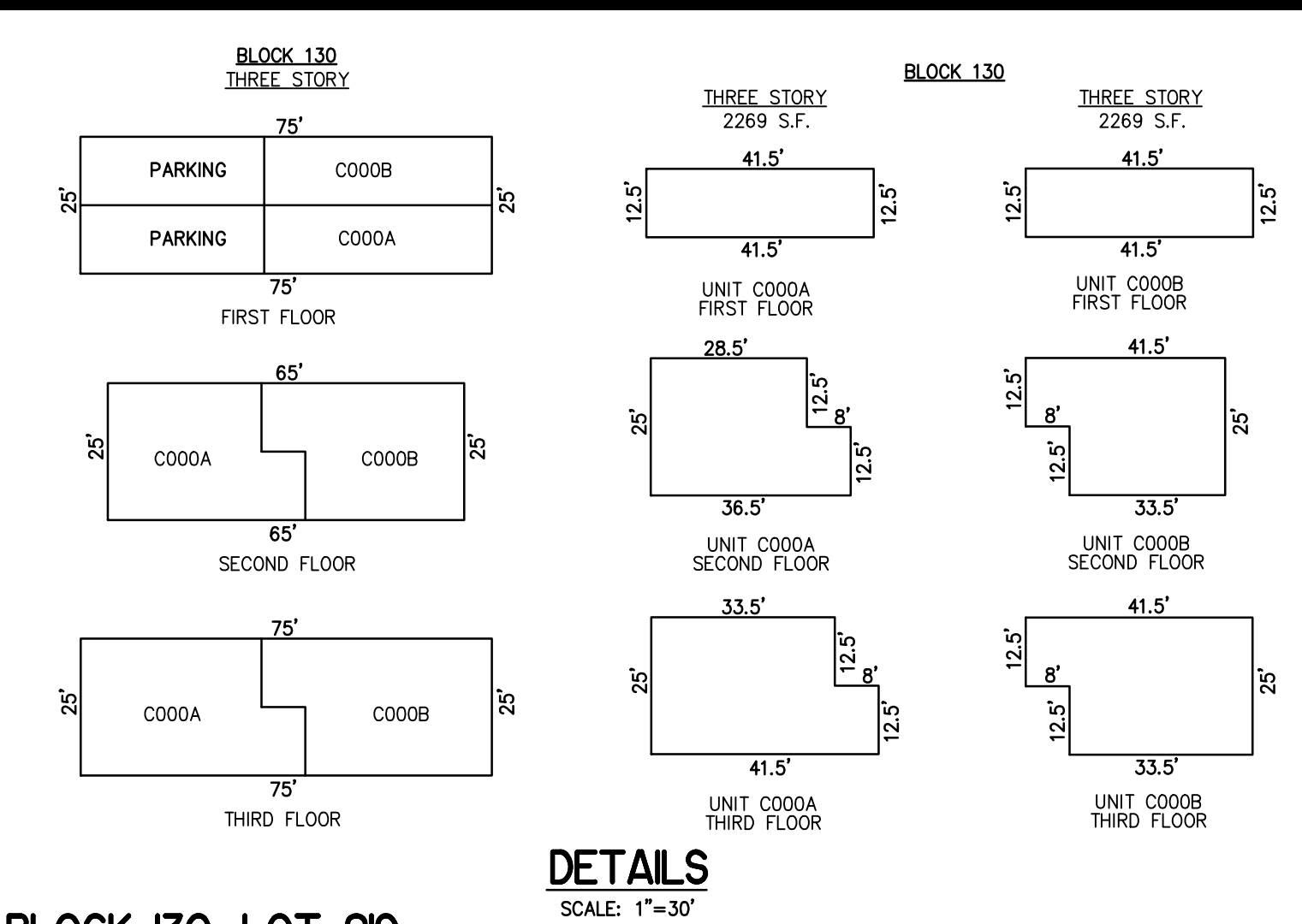
REVISIONS		
4-13-2007	CRAIG F. REMINGTON	23924
8-31-2009	CRAIG F. REMINGTON	23924



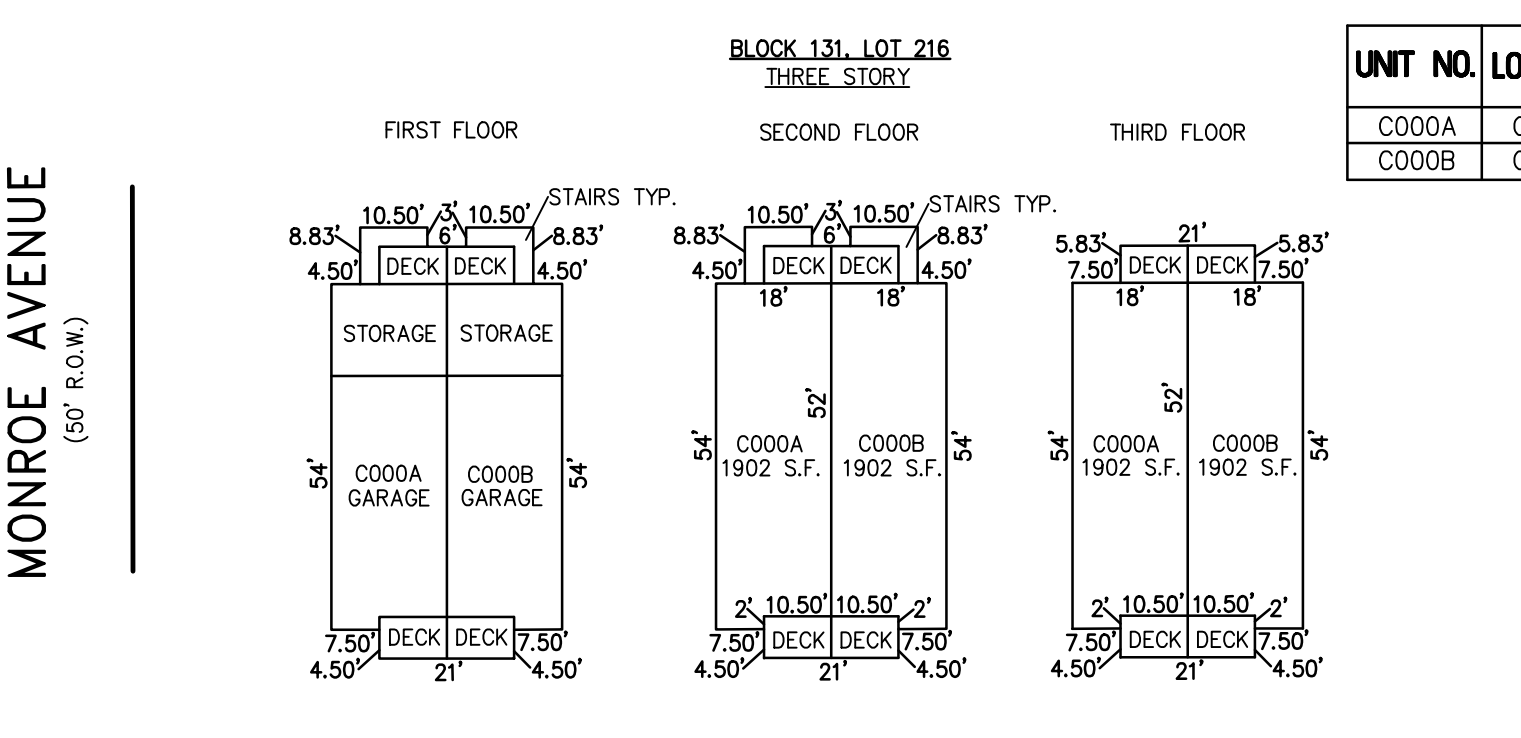
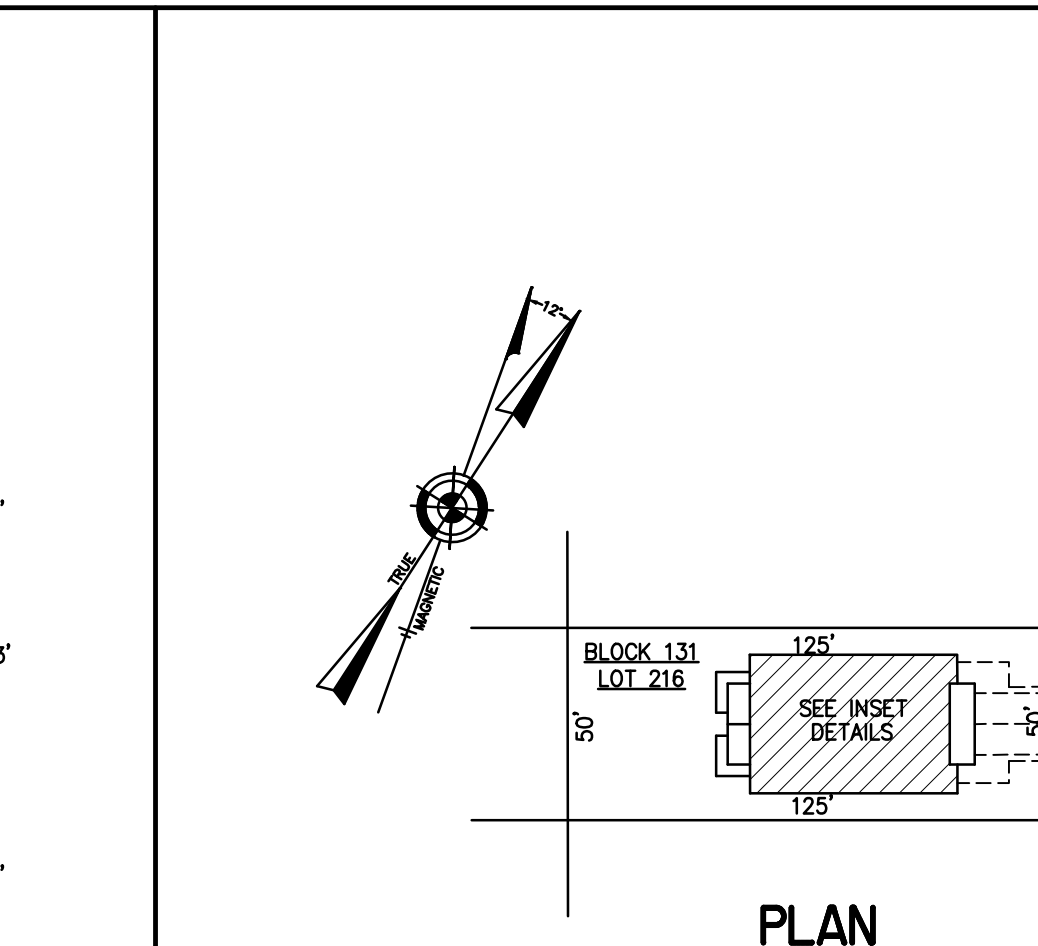
**BLOCK 128, LOT 216**  
**10 SOUTH ADAMS CONDOMINIUM**  
**10 SOUTH ADAMS AVENUE**  
**INSET "1 N"**



**BLOCK 130, LOT 219**  
**5 SOUTH MONROE CONDOMINIUM**  
**5 SOUTH MONROE AVENUE**  
**INSET "1 P"**



**BLOCK 126, LOT 110**  
**OCEAN WALK OF MARGATE CONDOMINIUM**  
**23 SOUTH WASHINGTON AVENUE**  
**INSET "2Y"**



**BLOCK 131, LOT 218**  
**8 SOUTH MONROE CONDOMINIUM**  
**8 SOUTH MONROE AVENUE**  
**INSET "2Z"**

**CONDOMINIUM DETAILS AND DIMENSIONS**  
BLOCK 126, LOT 110  
BLOCK 128, LOT 216  
BLOCK 130, LOT 219  
SEE PLATE 4

"THIS TAX MAP PLATE HAS BEEN DIGITALLY DRAWN USING COMPUTER-AIDED DRAFTING/DESIGN (CADD) & COORDINATE GEOMETRY (COGO). IT IS BASED ON THE ORIGINAL DIGITALLY DRAWN TAX MAP PLATE BEARING THE OFFICIAL NEW JERSEY DIVISION TAXATION APPROVAL STAMP WITH APPROVAL DATE 6-3-2005 SERIAL NUMBER 846 AND SIGNATURES OF SIGNERS' THOMAS J. REILLY, CHIEF, LOCAL PROPERTY, FIELD ASSISTANCE, SANTO C. DIDONATO, SUPERVISING FIELD REPRESENTATIVE. THIS TAX MAP PLATE HAS BEEN DIGITALLY UPDATED TO REFLECT CONDITIONS AS OF 8-31-2009. THE ORIGINAL DIGITALLY DRAWN TAX MAP PLATE WITH THE OFFICIAL APPROVAL STAMP IS ON FILE WITH REMINGTON, VERNICK & WALBERG ENGINEERS."

**TAX MAP**  
**CITY OF MARGATE**  
ATLANTIC COUNTY NEW JERSEY  
SCALE: AS NOTED DATE: 1-30-2004

**CRAIG F. REMINGTON LAND SURVEYOR LIC. NO. 23924**  
**REMINGTON, VERNICK & WALBERG ENGINEERS**  
24 GA 28048700  
845 N. MAIN STREET, PLEASANTVILLE, N.J. 08232  
(609) 645-7100, FAX (609) 645-7076  
WEB SITE ADDRESS: WWW.RVW.COM