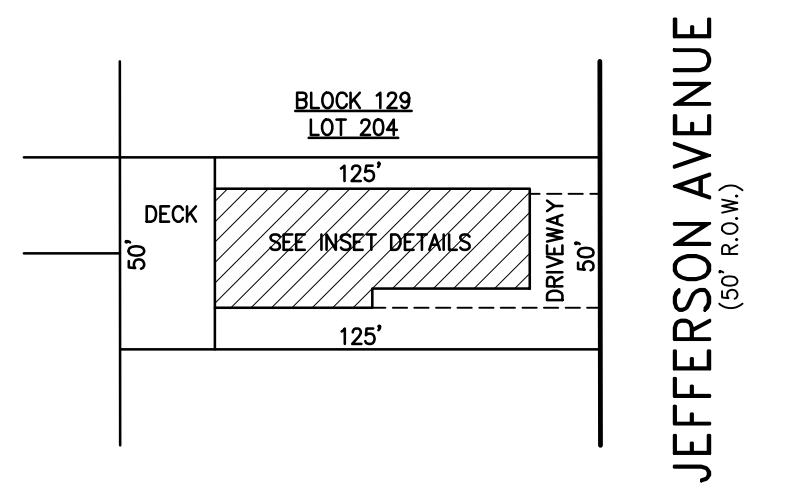
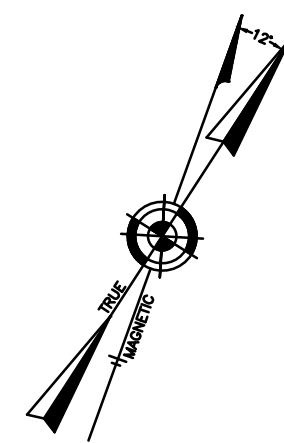
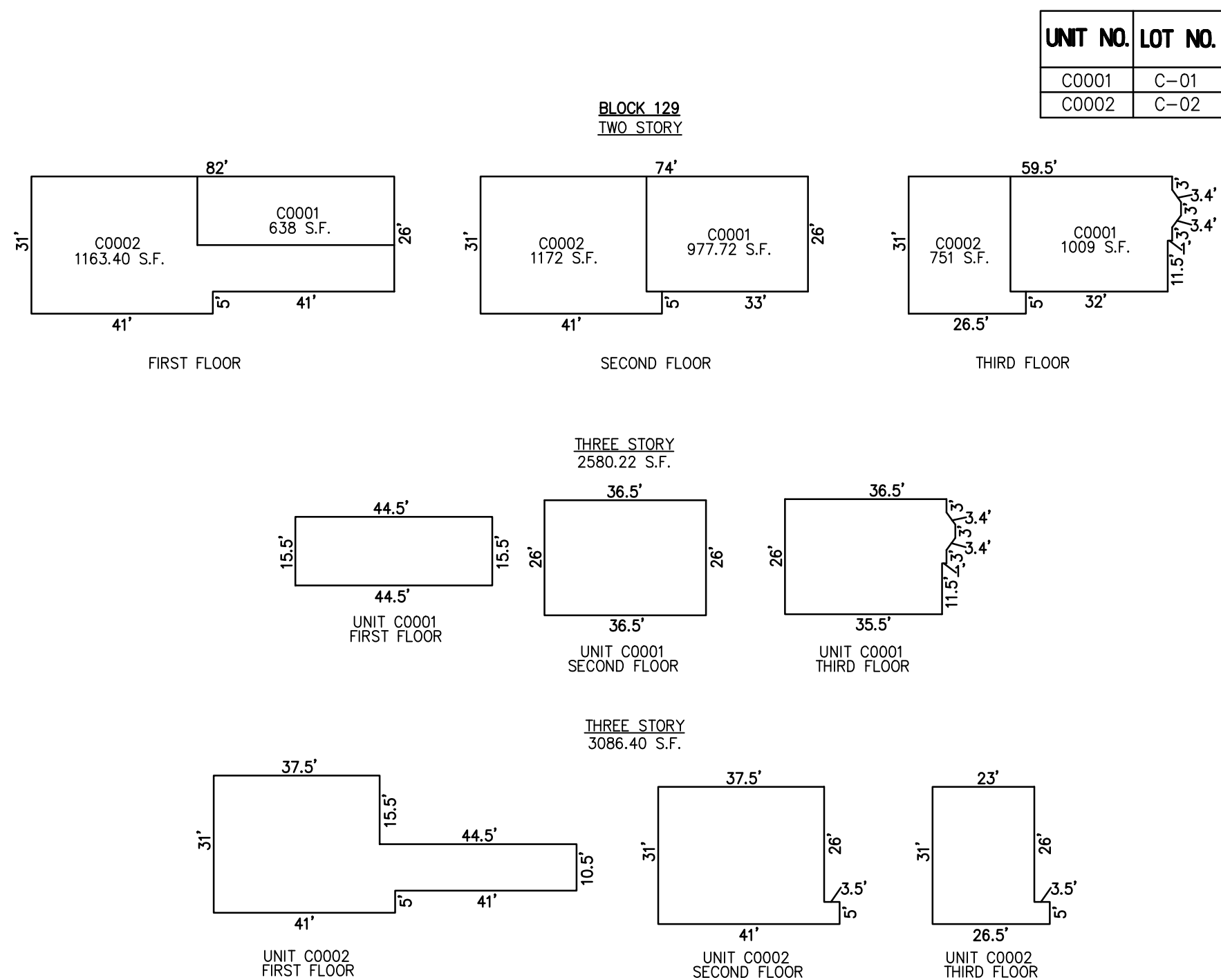


| REVISIONS | | |
|-----------|--------------------|-------|
| 4-13-2007 | CRAIG F. REMINGTON | 23924 |
| | | |
| | | |
| | | |
| | | |
| | | |
| | | |
| | | |
| | | |

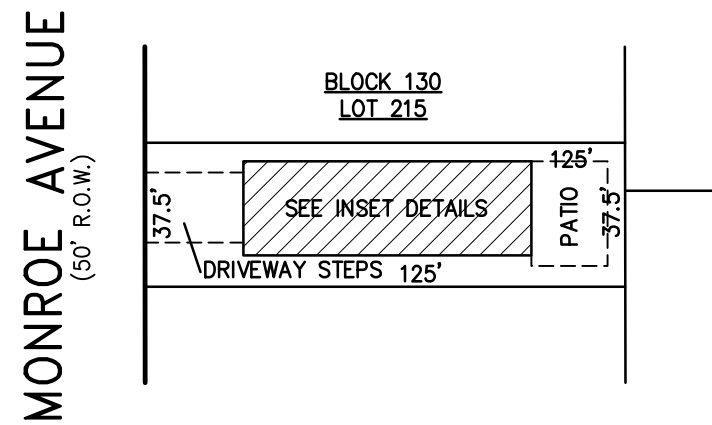
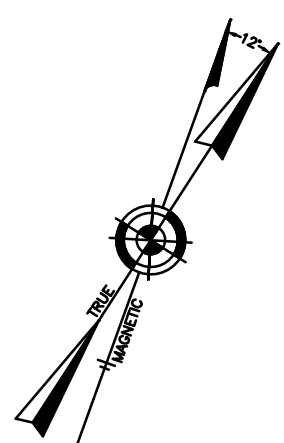


PLAN
SCALE: 1"=50'



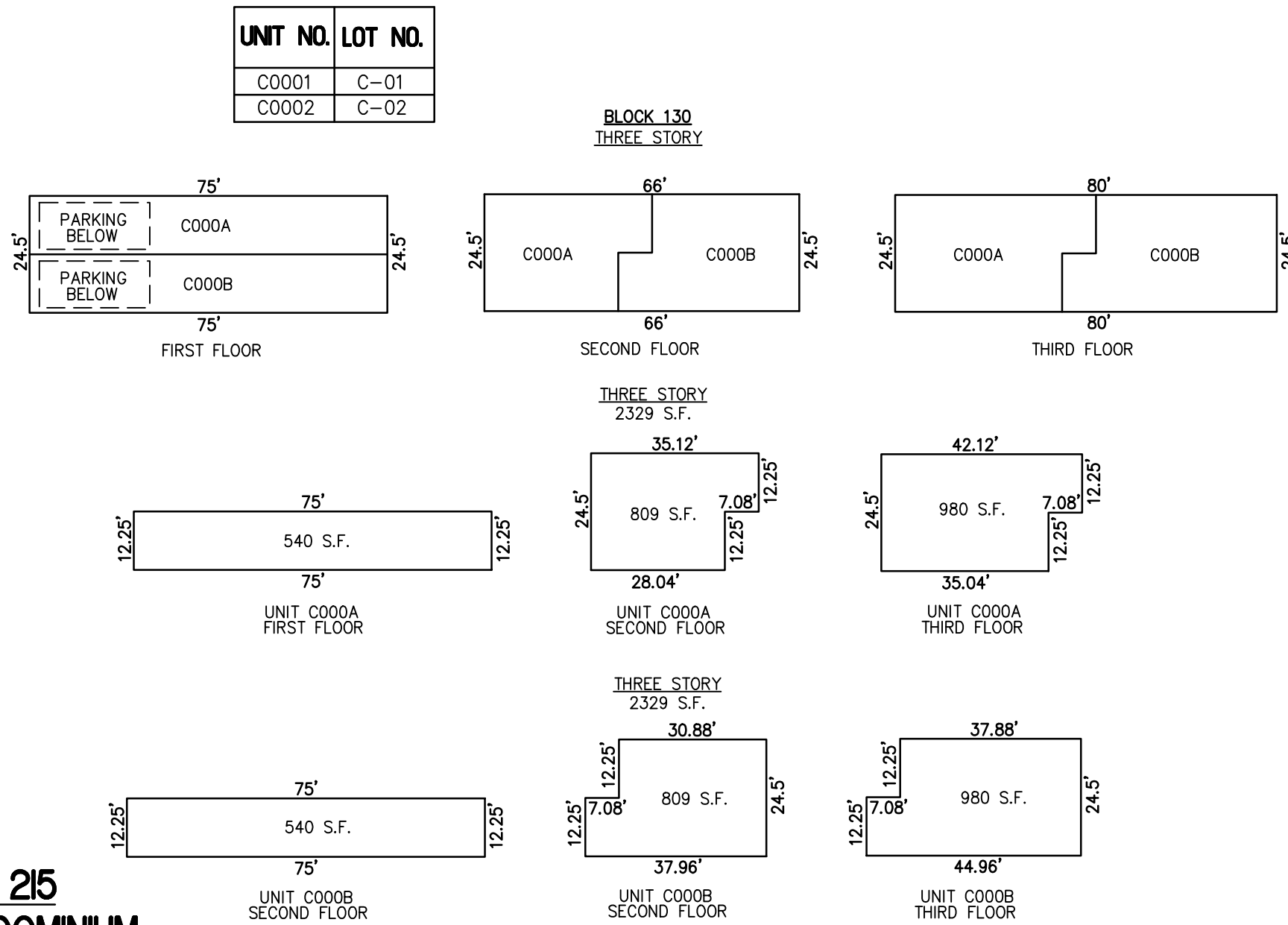
DETAILS
SCALE: 1"=30'

BLOCK 129, LOT 204
20-22 SOUTH JEFFERSON AVENUE CONDOMINIUM
20-22 SOUTH JEFFERSON AVENUE
INSET '1 J'

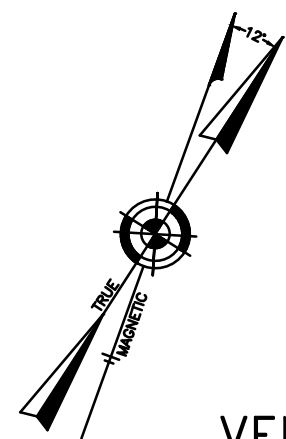


PLAN
SCALE: 1"=50'

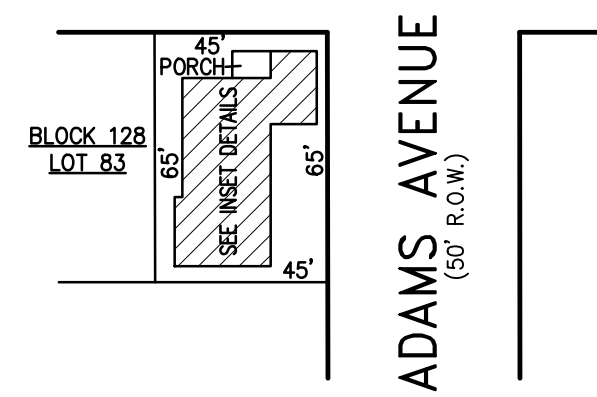
BLOCK 130, LOT 215
MONROE SOUTH CONDOMINIUM
7 SOUTH MONROE AVENUE
INSET '1 K'



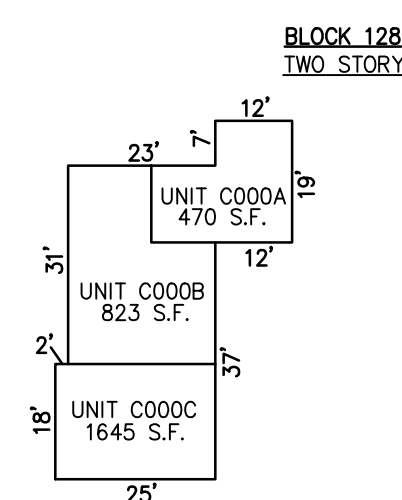
DETAILS
SCALE: 1"=30'



VENTNOR AVENUE (COUNTY ROUTE NO. 629)
(80' R.O.W.)

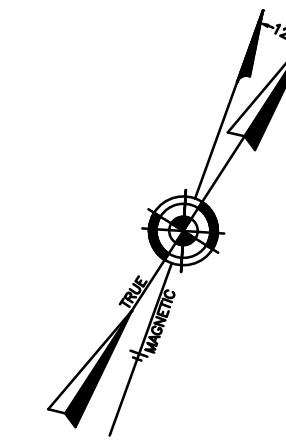


PLAN
SCALE: 1"=50'



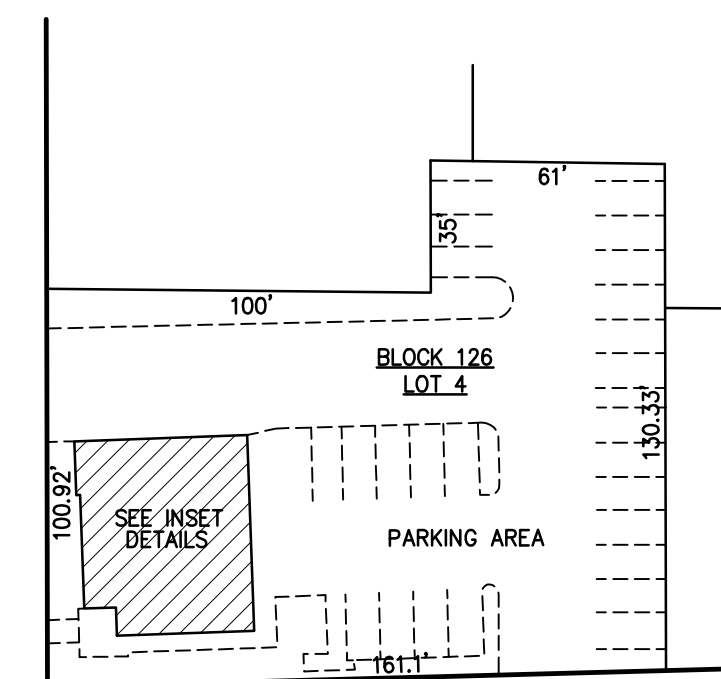
DETAILS
SCALE: 1"=30'

BLOCK 128, LOT 83
9400 VENTNOR AVENUE CONDOMINIUM
9400 VENTNOR AVENUE
INSET '1 L'



PACIFIC AVENUE
(50' R.O.W.)

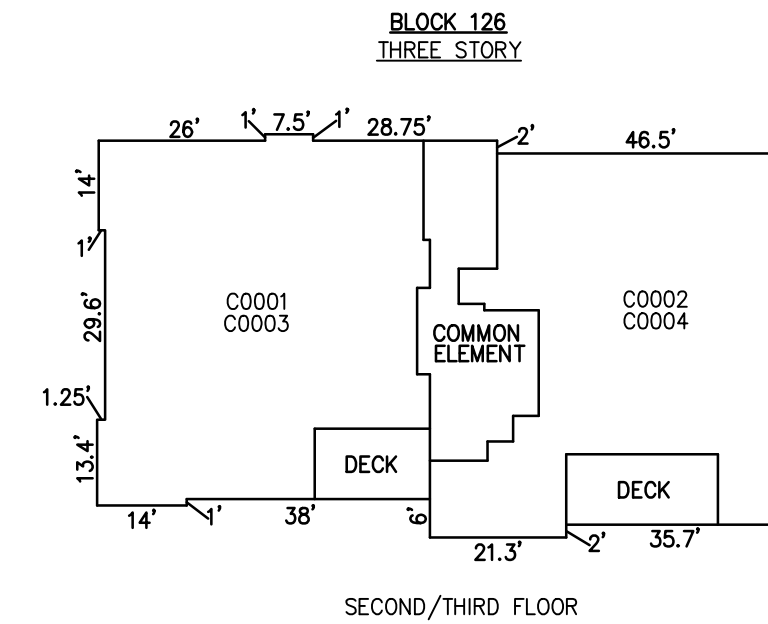
WASHINGTON AVENUE
(62' R.O.W.)



ATLANTIC AVENUE
(100' R.O.W.)

PLAN
SCALE: 1"=50'

| UNIT NO. | LOT NO. |
|----------|---------|
| C0001 | C-01 |
| C0002 | C-02 |
| C0003 | C-03 |
| C0004 | C-04 |
| C0005 | C-05 |



DETAILS
SCALE: 1"=30'

CONDOMINIUM DETAILS AND DIMENSIONS
BLOCK 129, LOT 204
BLOCK 130, LOT 215
BLOCK 128, LOT 83
BLOCK 126, LOT 4
SEE PLATE 4

BLOCK 126, LOT 4
9219 ATLANTIC AVENUE CONDOMINIUM
9219 ATLANTIC AVENUE
INSET '1 M'

"THIS TAX MAP PLATE HAS BEEN DIGITALLY DRAWN USING COMPUTER-AIDED DRAFTING/DESIGN (CADD) & COORDINATE GEOMETRY (COGO). IT IS BASED ON THE ORIGINAL DIGITALLY DRAWN TAX MAP PLATE BEARING THE OFFICIAL NEW JERSEY DIVISION TAXATION APPROVAL STAMP WITH APPROVAL DATE 6-3-2005 SERIAL NUMBER 846 AND SIGNATURES OF SIGNERS' THOMAS J. REILLY, CHIEF, LOCAL PROPERTY, FIELD ASSISTANCE; SANTO C. DIDONATO, SUPERVISING FIELD REPRESENTATIVE. THIS TAX MAP PLATE HAS BEEN DIGITALLY UPDATED TO REFLECT CONDITIONS AS OF 4-13-2007. THE ORIGINAL DIGITALLY DRAWN TAX MAP PLATE WITH THE OFFICIAL APPROVAL STAMP IS ON FILE WITH REMINGTON, VERNICK & WALBERG ENGINEERS."

TAX MAP
CITY OF MARGATE

ATLANTIC COUNTY NEW JERSEY
SCALE: AS NOTED DATE: 1-30-2004

CRAIG F. REMINGTON LAND SURVEYOR LIC. NO. 23924



REMINGTON, VERNICK & WALBERG ENGINEERS
24 GA 28048700
845 N. MAIN STREET, PLEASANTVILLE, N.J. 08232
(609) 645-710, FAX (609) 645-7076
WEB SITE ADDRESS: WWW.RVW.COM