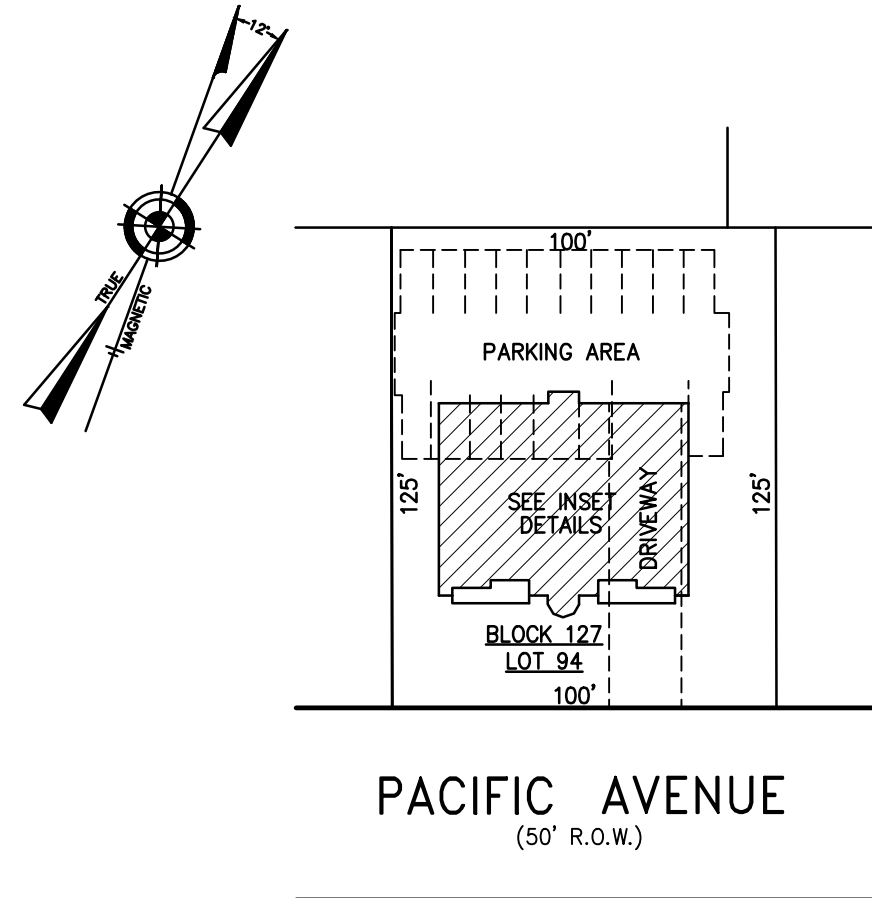
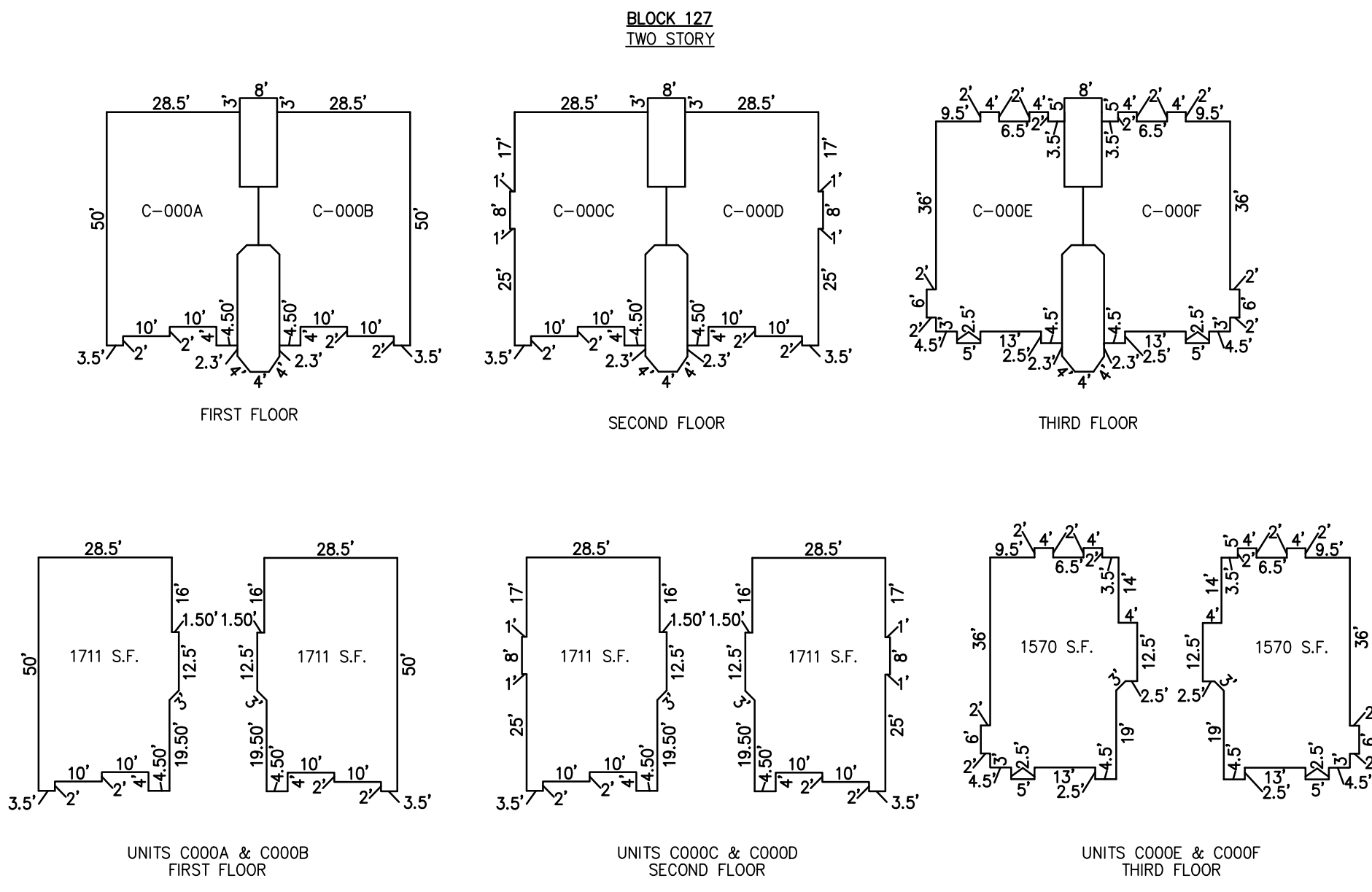


REVISIONS		
4-13-2007	CRAIG F. REMINGTON	23924

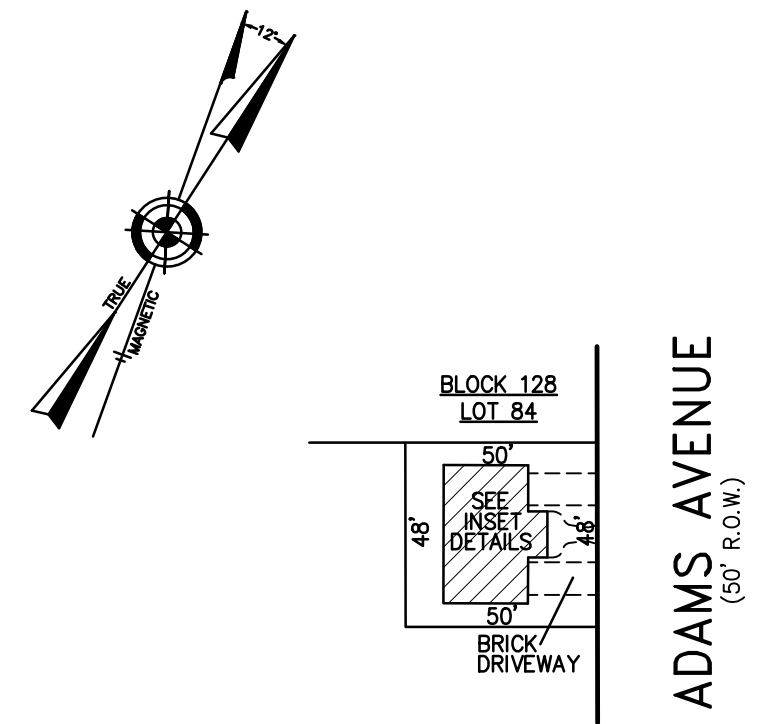


UNIT NO.	LOT NO.
C000A	C-01
C000B	C-02
C000C	C-03
C000D	C-04
C000E	C-05
C000F	C-06

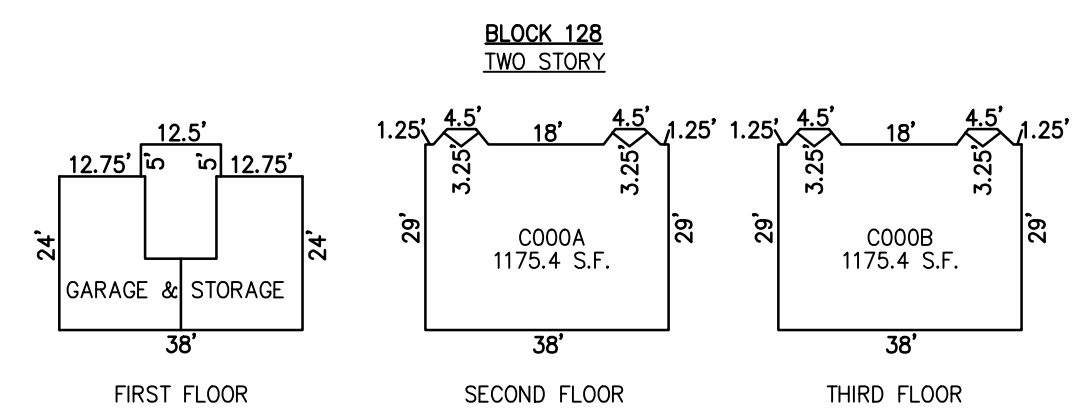


DETAILS  
SCALE: 1"=30'

**BLOCK 127, LOT 94**  
**OCEAN VISTA CONDOMINIUM**  
9307 PACIFIC AVENUE  
INSET "1 F"



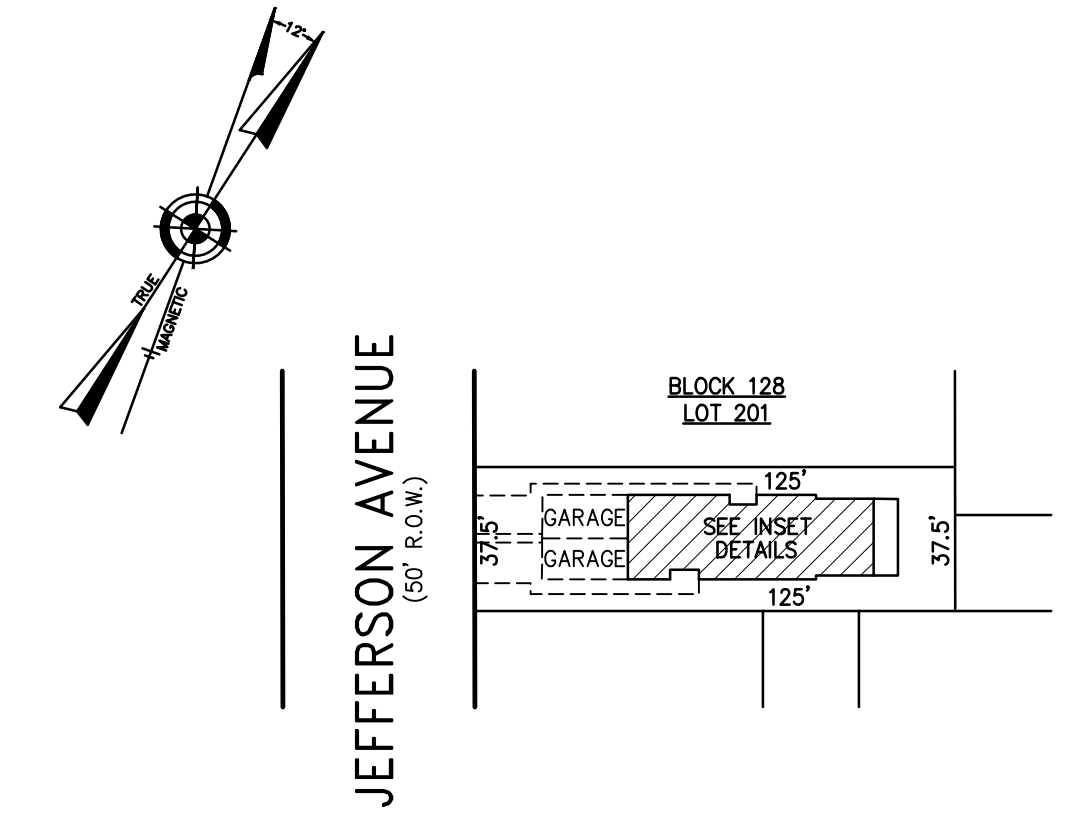
UNIT NO.	LOT NO.
C000A	C-01
C000B	C-02



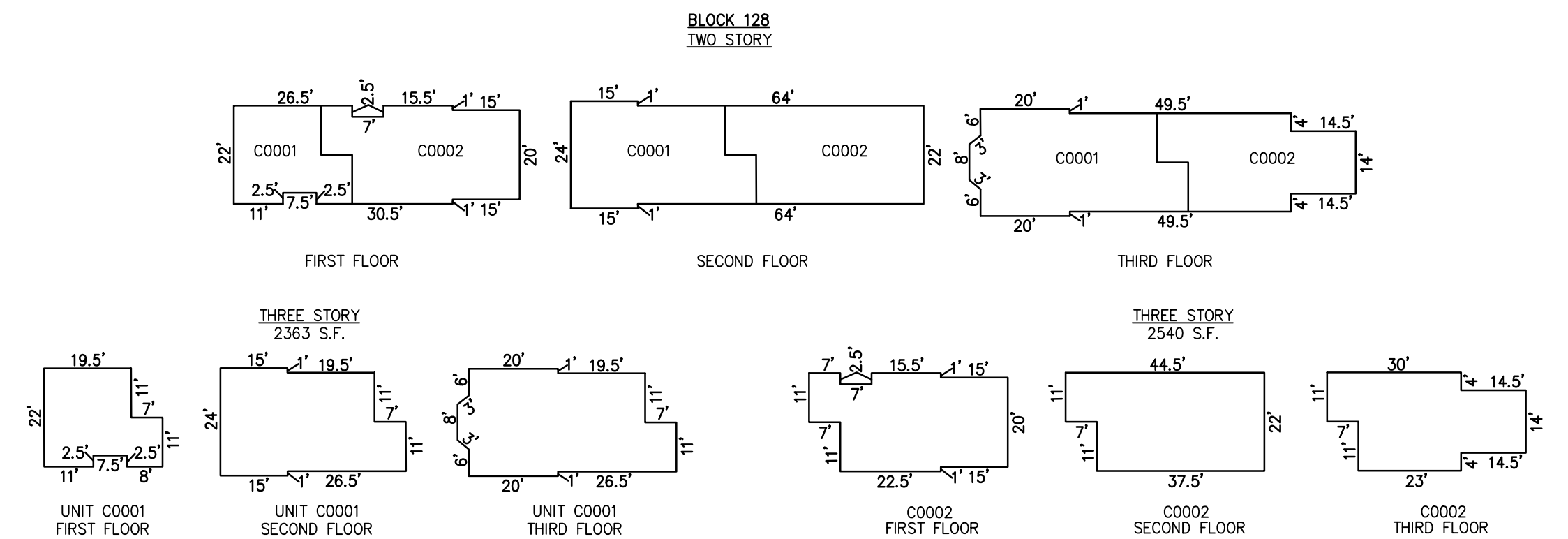
DETAILS  
SCALE: 1"=30'

**BLOCK 128, LOT 84**  
**26 SOUTH ADAMS AVENUE CONDOMINIUM**  
26 SOUTH ADAMS AVENUE  
INSET "1 G"

CONDOMINIUM DETAILS AND DIMENSIONS  
BLOCK 127, LOT 94  
BLOCK 128, LOT 84  
BLOCK 128, LOT 201  
SEE PLATE 4



UNIT NO.	LOT NO.
C0001	C-01
C0002	C-02



DETAILS  
SCALE: 1"=30'

**BLOCK 128, LOT 201**  
**23 SOUTH JEFFERSON AVENUE CONDOMINIUM**  
23 SOUTH JEFFERSON AVENUE  
INSET "1 H"

"THIS TAX MAP PLATE HAS BEEN DIGITALLY DRAWN USING COMPUTER-AIDED DRAFTING/DESIGN (CADD) & COORDINATE GEOMETRY (COCO). IT IS BASED ON THE ORIGINAL DIGITALLY DRAWN TAX MAP PLATE BEARING THE OFFICIAL NEW JERSEY DIVISION TAXATION APPROVAL STAMP WITH APPROVAL DATE 6-3-2005 SERIAL NUMBER 846 AND SIGNATURES OF SIGNERS' THOMAS J. REILLY, CHIEF, LOCAL PROPERTY, FIELD ASSISTANCE; SANTO C. DIDONATO, SUPERVISING FIELD REPRESENTATIVE. THIS TAX MAP PLATE HAS BEEN DIGITALLY UPDATED TO REFLECT CONDITIONS AS OF 8-31-2009. THE ORIGINAL DIGITALLY DRAWN TAX MAP PLATE WITH THE OFFICIAL APPROVAL STAMP IS ON FILE WITH REMINGTON, VERNICK & WALBERG ENGINEERS."

**TAX MAP**  
**CITY OF MARGATE**  
ATLANTIC COUNTY NEW JERSEY  
SCALE: AS NOTED DATE: 1-30-2004

CRAIG F. REMINGTON LAND SURVEYOR LIC. NO. 23924



REMINGTON, VERNICK & WALBERG ENGINEERS  
845 N. MAIN STREET, PLEASANTVILLE, N.J. 08232  
(609) 645-710, FAX (609) 645-7076  
WEB SITE ADDRESS: WWW.RVWE.COM