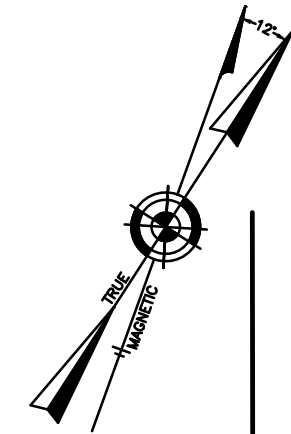
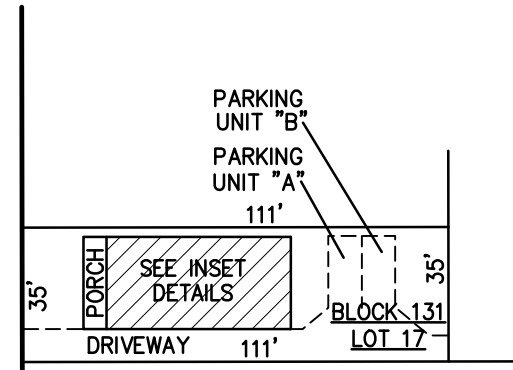


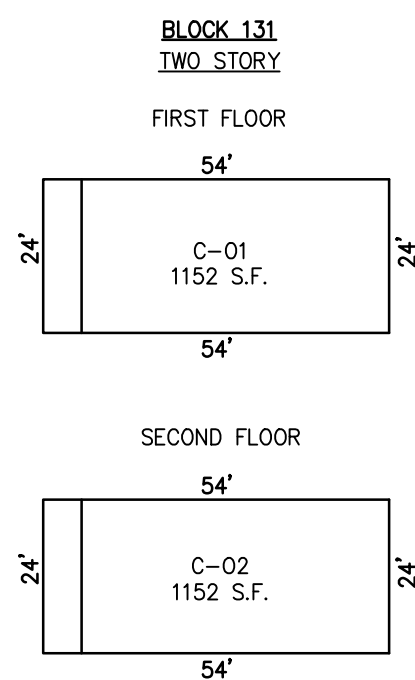
REVISIONS		
4-13-2007	CRAIG F. REMINGTON	23924



WASHINGTON AVENUE



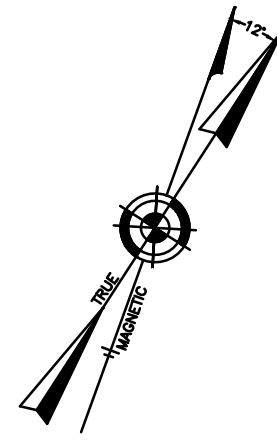
PLAN
SCALE: 1"=50'



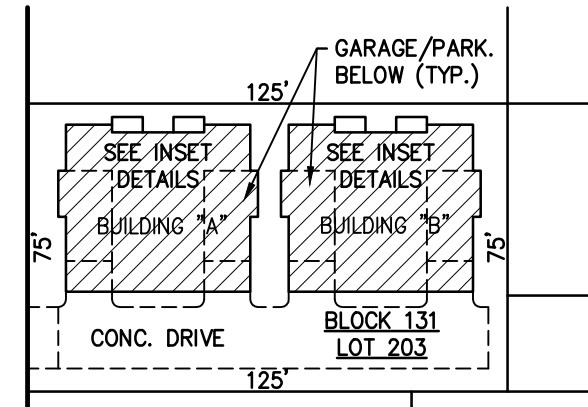
DETAILS
SCALE: 1"=30'

BLOCK 126, LOT 108
15 SOUTH WASHINGTON AVENUE CONDOMINIUM
15 SOUTH WASHINGTON AVENUE
INSET "XXXX"

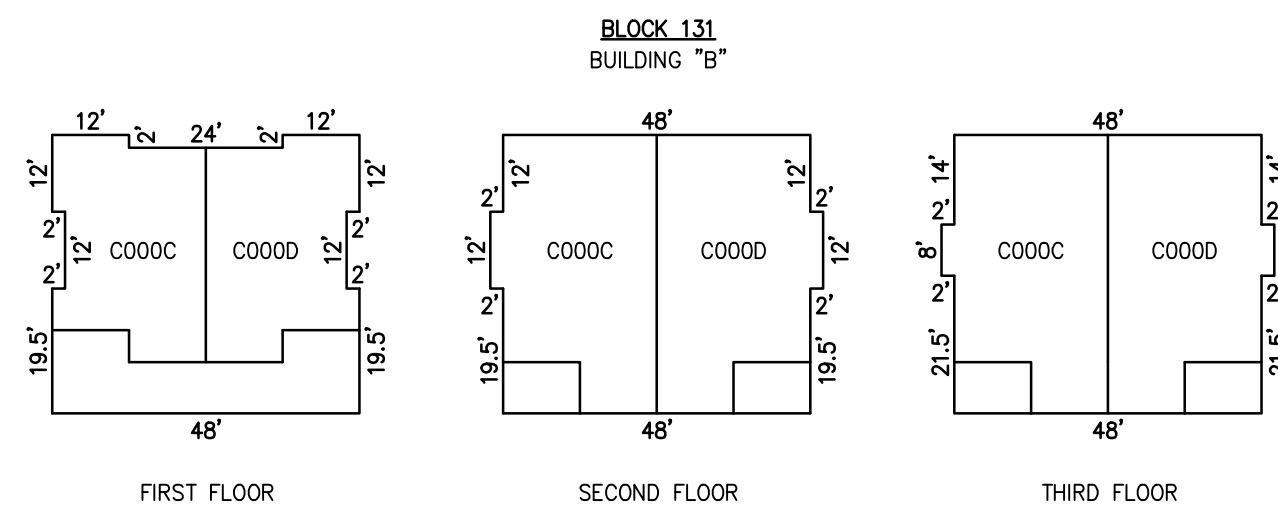
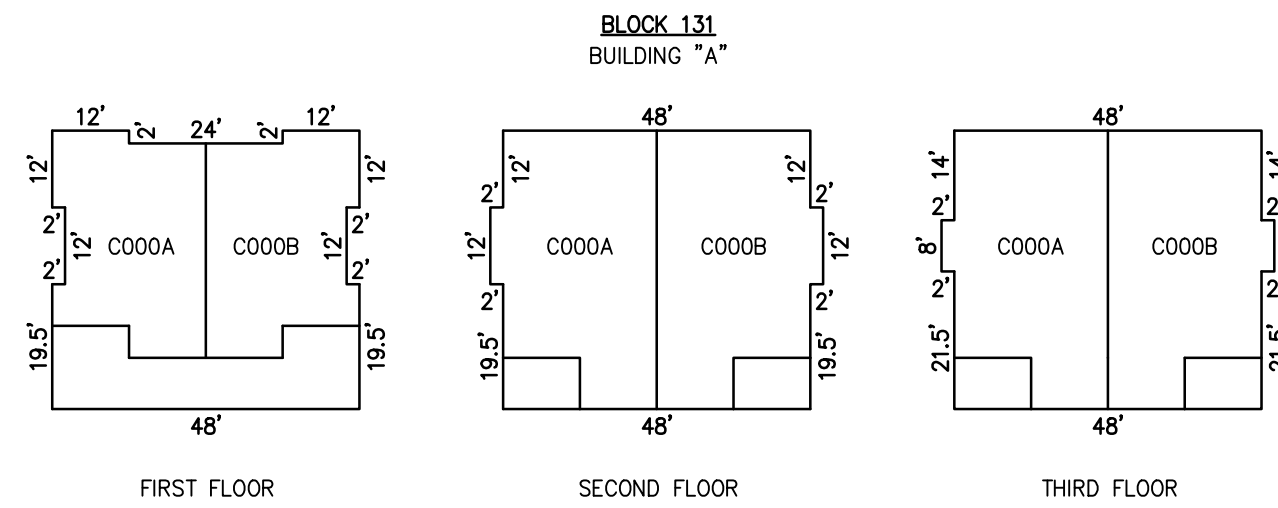
UNIT NO.	LOT NO.
C-01	C-01
C-02	C-02



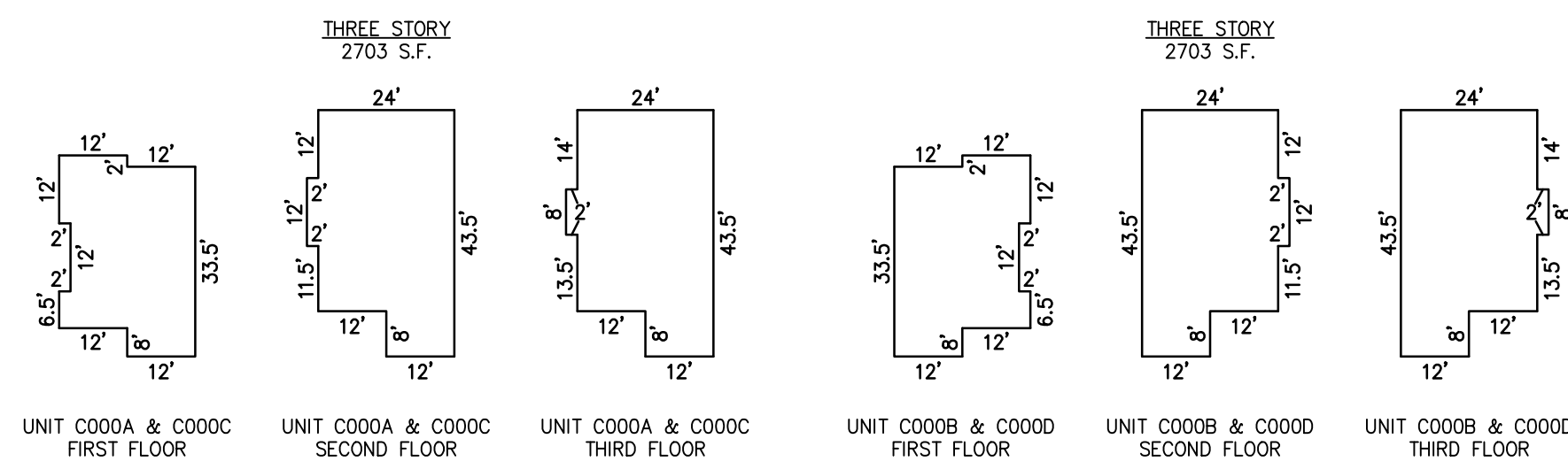
COOLIDGE AVENUE
(50' R.O.W.)



PLAN
SCALE: 1"=50'



DETAILS
SCALE: 1"=30'

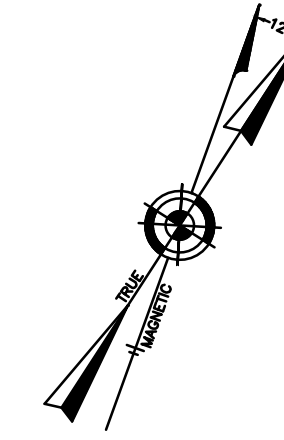


NOTE: 1. DIMENSIONS AND SQUARE FOOTAGE ARE TYPICAL FOR ALL FLOORS.
2. DIMENSIONS AND SQUARE FOOTAGE ARE TYPICAL FOR SIMILAR UNITS.

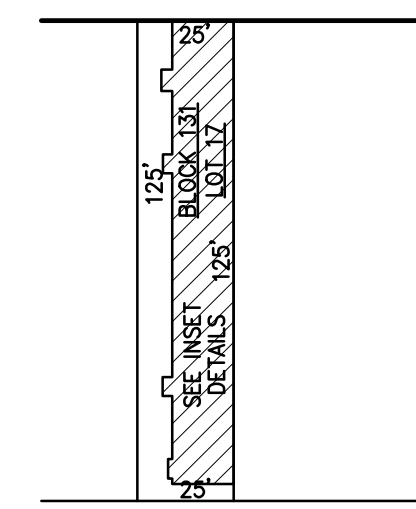
DETAILS
SCALE: 1"=30'

BLOCK 131, LOT 203
COLONNADE CONDOMINIUM
23 SOUTH COOLIDGE AVENUE
INSET "VV"

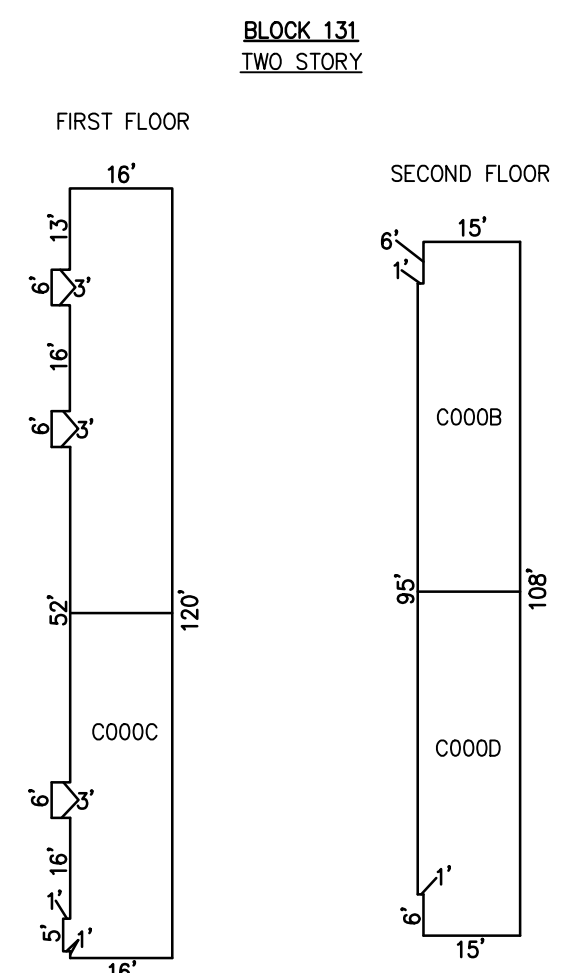
CONDOMINIUM DETAILS AND DIMENSIONS
BLOCK 126, LOT 108
BLOCK 131, LOT 17
BLOCK 131, LOT 203
SEE PLATE 4



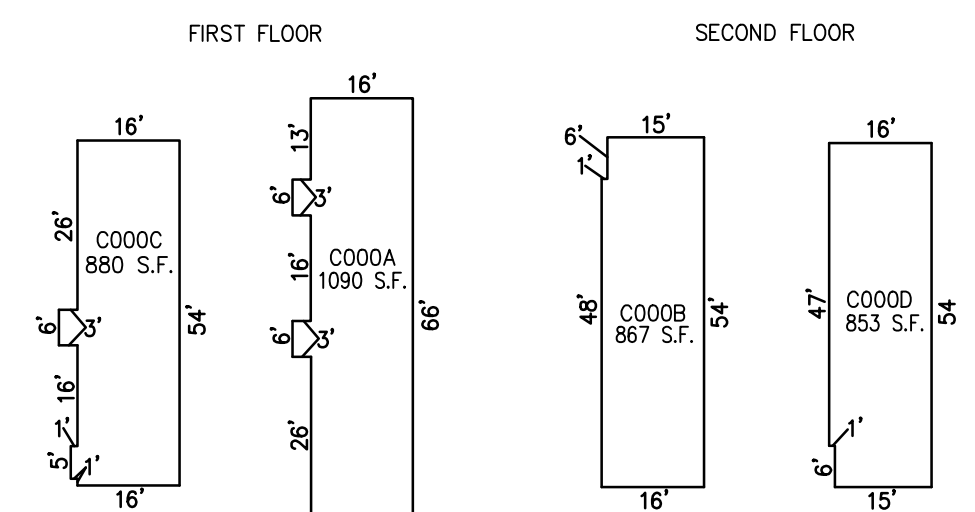
VENTNOR AVENUE
(COUNTY ROUTE NO. 629)
(80' R.O.W.)



PLAN
SCALE: 1"=50'



UNIT NO.	LOT NO.
C000A	C-01
C000B	C-02
C000C	C-03
C000D	C-04



DETAILS
SCALE: 1"=30'

BLOCK 131, LOT 17
SAM'S CONDOMINIUM ASSOCIATION
9706 VENTNOR AVENUE
INSET "WWW"

"THIS TAX MAP PLATE HAS BEEN DIGITALLY DRAWN USING COMPUTER-AIDED DRAFTING/DESIGN (CADD) & COORDINATE GEOMETRY (COGO). IT IS BASED ON THE ORIGINAL DIGITALLY DRAWN TAX MAP PLATE BEARING THE OFFICIAL NEW JERSEY DIVISION TAXATION APPROVAL STAMP WITH APPROVAL DATE 6-3-2005 SERIAL NUMBER 846 AND SIGNATURES OF SIGNERS' THOMAS J. REILLY, CHIEF, LOCAL PROPERTY, FIELD ASSISTANCE. SANTO C. DIDONATO, SUPERVISING FIELD REPRESENTATIVE. THE ORIGINAL DIGITALLY DRAWN TAX MAP PLATE WITH THE OFFICIAL APPROVAL STAMP IS ON FILE WITH REMINGTON, VERNICK & WALBERG ENGINEERS."

TAX MAP
CITY OF MARGATE

ATLANTIC COUNTY NEW JERSEY
SCALE: AS NOTED DATE: 1-30-2004

CRAIG F. REMINGTON LAND SURVEYOR LIC. NO. 23924



REMINGTON, VERNICK & WALBERG ENGINEERS
24 GA 28048700
845 N. MAIN STREET, PLEASANTVILLE, N.J. 08232
(609) 645-710, FAX (609) 645-7076
WEB SITE ADDRESS: WWW.RVW.COM