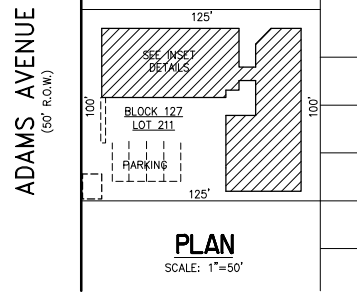
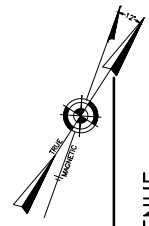
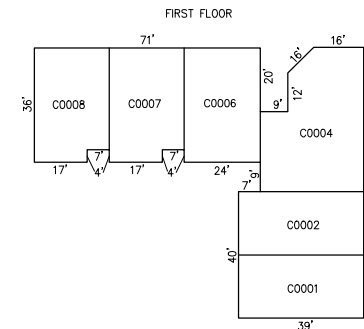
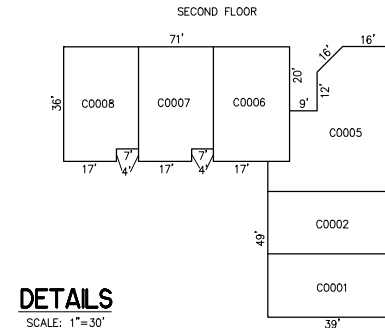
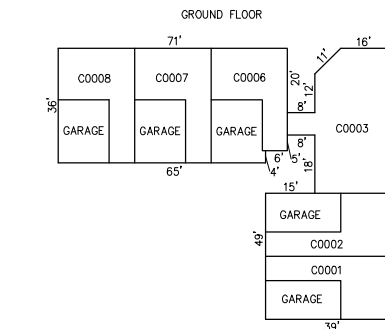
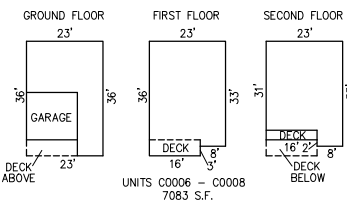
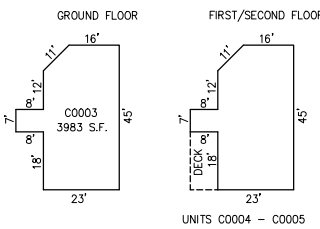
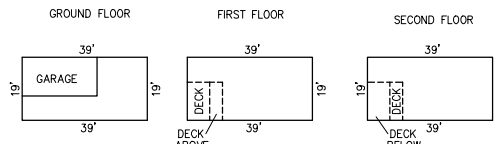


REVISIONS	

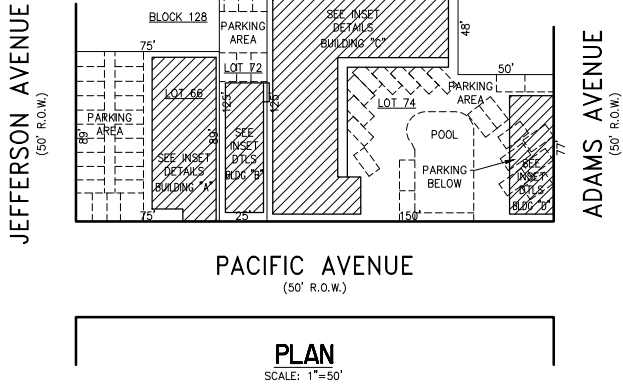
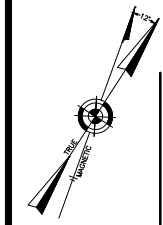


**BLOCK 127, LOT 211**  
**ADAMS TERRACE CONDOMINIUM**  
**II SOUTH ADAMS AVENUE**  
**INSET "EE"**



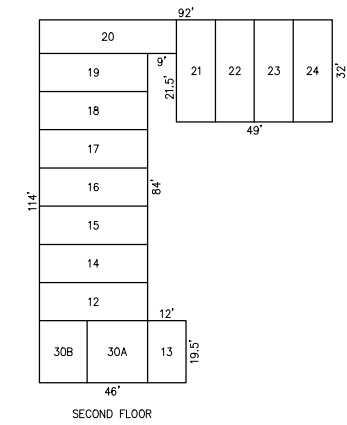
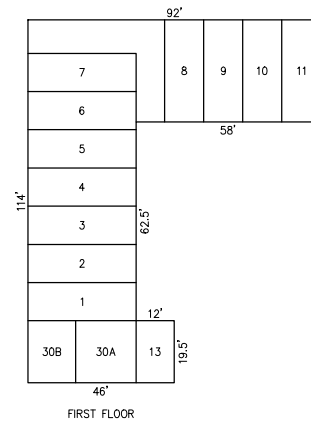
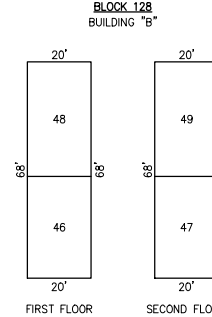
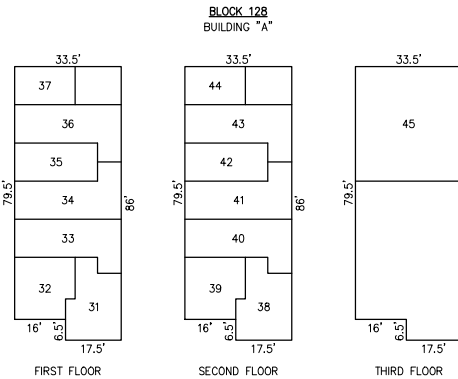
UNIT NO.	LOT NO.
C0001	C-01
C0002	C-02
C0003	C-03
C0004	C-04
C0005	C-05
C0006	C-06
C0007	C-07
C0008	C-08

**DETAILS**  
SCALE: 1"=30'



**BLOCK 128, LOT 66**  
**9415-19 PACIFIC AVENUE**  
**BLOCK 128, LOTS 72, 74**  
**9401-I PACIFIC AVENUE**  
**9401 CONDO ASSOCIATION CONDOMINIUM**  
**INSET "FF"**

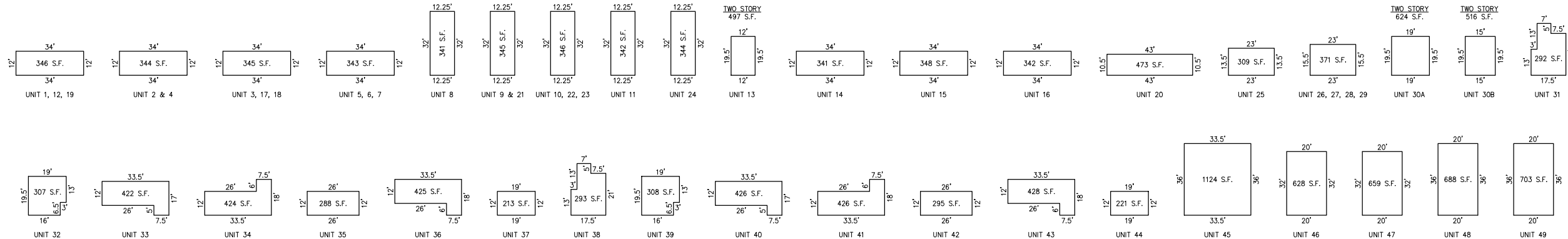
UNIT NO.	LOT NO.
UNIT 31	C-66.31
UNIT 32	C-66.32
UNIT 33	C-66.33
UNIT 34	C-66.34
UNIT 35	C-66.35
UNIT 36	C-66.36
UNIT 37	C-66.37
UNIT 38	C-66.38
UNIT 39	C-66.39
UNIT 40	C-66.40
UNIT 41	C-66.41
UNIT 42	C-66.42
UNIT 43	C-66.43
UNIT 44	C-66.44
UNIT 45	C-66.45
UNIT 46	C-72.46
UNIT 47	C-72.47
UNIT 48	C-72.48
UNIT 49	C-72.49



**DETAILS**  
SCALE: 1"=30'

**DETAILS**  
SCALE: 1"=30'

UNIT NO.	LOT NO.
UNIT 1	C-74.01
UNIT 2	C-74.02
UNIT 3	C-74.03
UNIT 4	C-74.04
UNIT 5	C-74.05
UNIT 6	C-74.06
UNIT 7	C-74.07
UNIT 8	C-74.08
UNIT 9	C-74.09
UNIT 10	C-74.10
UNIT 11	C-74.11
UNIT 12	C-74.12
UNIT 13	C-74.13
UNIT 14	C-74.14
UNIT 15	C-74.15
UNIT 16	C-74.16
UNIT 17	C-74.17
UNIT 18	C-74.18
UNIT 19	C-74.19
UNIT 20	C-74.20
UNIT 21	C-74.21
UNIT 22	C-74.22
UNIT 23	C-74.23
UNIT 24	C-74.24
UNIT 25	C-74.25
UNIT 26	C-74.26
UNIT 27	C-74.27
UNIT 28	C-74.28
UNIT 29	C-74.29
UNIT 30A	C-74.30
UNIT 30B	C-74.31



NOTE: DIMENSIONS AND SQUARE FOOTAGE ARE TYPICAL FOR SIMILAR UNITS

**DETAILS**  
SCALE: 1"=30'

**CONDOMINIUM DETAILS AND DIMENSIONS**  
**BLOCK 127, LOT 211**  
**BLOCK 128, LOT 66, 72, 74**  
**SEE PLATE 4**

"THIS TAX MAP PLATE HAS BEEN DIGITALLY DRAWN USING COMPUTER-AIDED DRAFTING/DESIGN (CADD) & COORDINATE GEOMETRY (COGO). IT IS BASED ON THE ORIGINAL DIGITALLY DRAWN TAX MAP PLATE BEARING THE OFFICIAL NEW JERSEY DIVISION TAXATION APPROVAL STAMP WITH APPROVAL DATE 6-3-2005 SERIAL NUMBER 846 AND SIGNATURES OF SIGNERS THOMAS J. REILLY, CHIEF, LOCAL PROPERTY, FIELD ASSISTANCE, SANTO C. DIDONATO, SUPERVISING FIELD REPRESENTATIVE. THE ORIGINAL DIGITALLY DRAWN TAX MAP PLATE WITH THE OFFICIAL APPROVAL STAMP IS ON FILE WITH REMINGTON, VERNICK & WALBERG ENGINEERS."

**TAX MAP**  
**CITY OF MARGATE**  
ATLANTIC COUNTY NEW JERSEY  
SCALE: AS NOTED DATE: 1-30-2004

**CRAIG F. REMINGTON LAND SURVEYOR LIC. NO. 23924**

**REMRINGTON, VERNICK & WALBERG ENGINEERS**  
24 GA 28048700  
845 N. MAN STREET, PLEASANTVILLE, NJ 08232  
(609) 645-710, FAX (609) 645-7076  
WEB SITE ADDRESS: WWW.RVE.COM