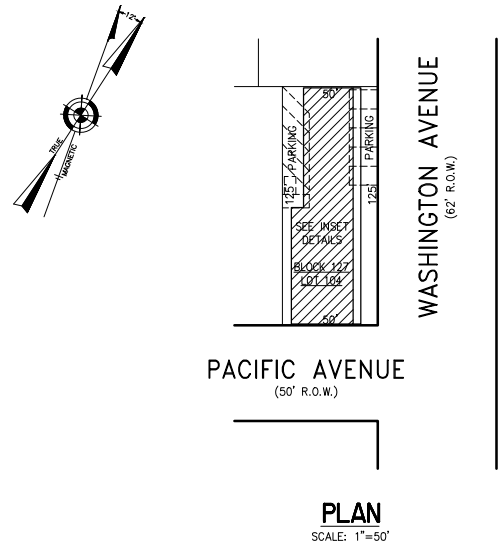
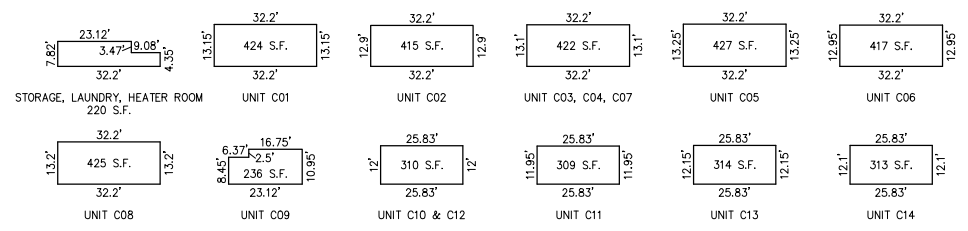
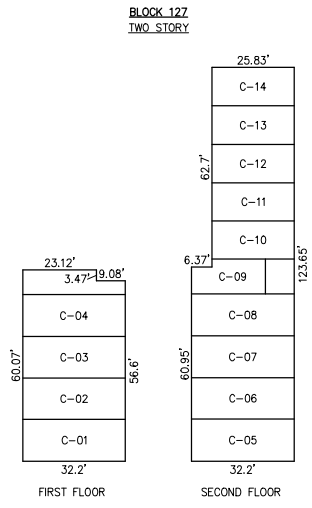


REVISIONS		



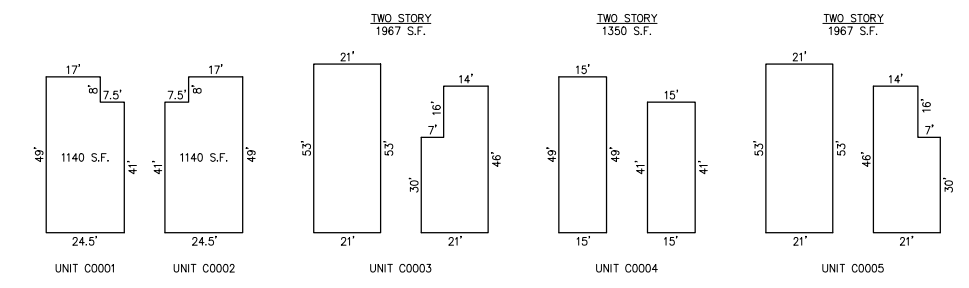
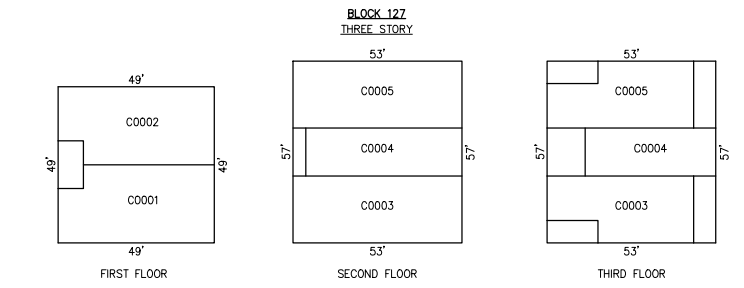
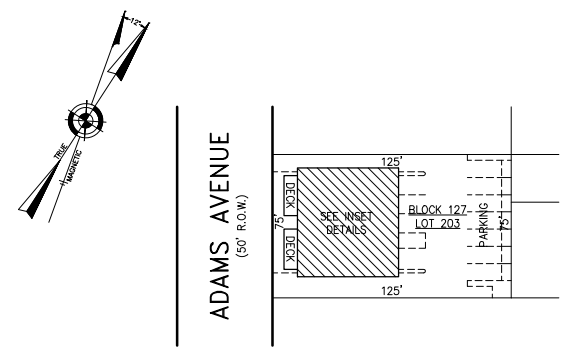
**BLOCK 127, LOT 104  
WASHINGTON CONDOMINIUM  
30 SOUTH WASHINGTON AVENUE  
INSET "AA"**

UNIT NO.	LOT NO.
C-01	C-01
C-02	C-02
C-03	C-03
C-04	C-04
C-05	C-05
C-06	C-06
C-07	C-07
C-08	C-08
C-09	C-09
C-10	C-10
C-11	C-11
C-12	C-12
C-13	C-13
C-14	C-14



NOTE: DIMENSIONS AND SQUARE FOOTAGE ARE TYPICAL FOR SIMILAR UNITS

**DETAILS**  
SCALE: 1"=30'

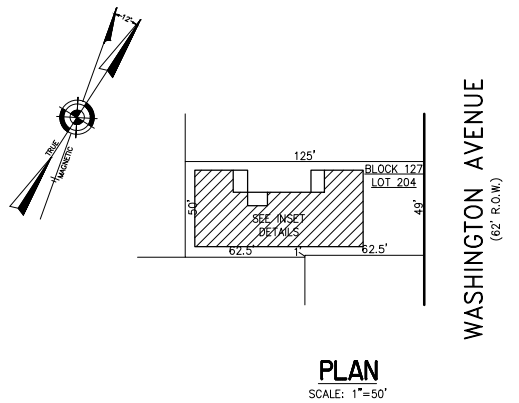


NOTE: DIMENSIONS AND SQUARE FOOTAGE ARE TYPICAL FOR SIMILAR UNITS

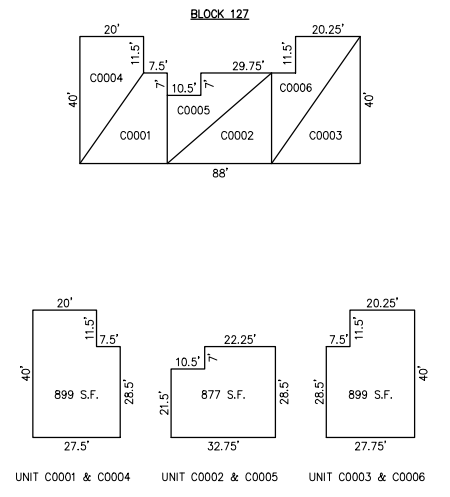
**DETAILS**  
SCALE: 1"=30'

**BLOCK 127, LOT 203  
SEA LOFT CONDOMINIUM  
21 SOUTH ADAMS AVENUE  
INSET "BB"**

UNIT NO.	LOT NO.
C0001	C-01
C0002	C-02
C0003	C-03
C0004	C-04
C0005	C-05



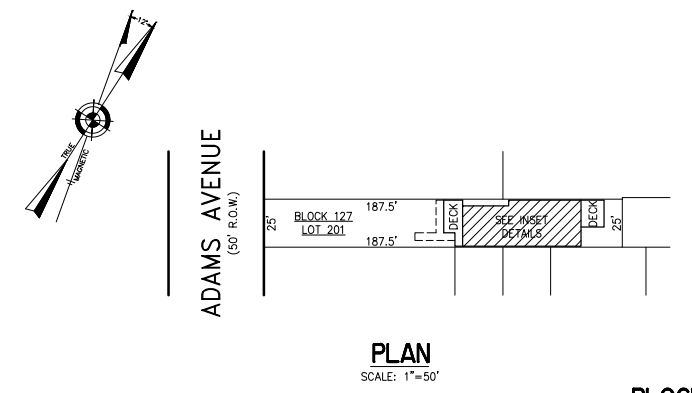
**BLOCK 127, LOT 204  
ATLANTIC VIEW CONDOMINIUM  
22 SOUTH WASHINGTON AVENUE  
INSET "CC"**



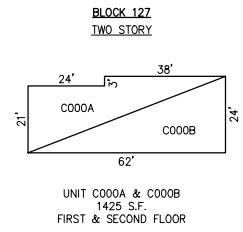
UNIT NO.	LOT NO.
C0001	C-01
C0002	C-02
C0003	C-03
C0004	C-04
C0005	C-05
C0006	C-06

NOTE: 1. DIMENSIONS AND SQUARE FOOTAGE ARE TYPICAL FOR FIRST AND SECOND FLOOR  
2. DIMENSIONS AND SQUARE FOOTAGE ARE TYPICAL FOR SIMILAR UNITS

**DETAILS**  
SCALE: 1"=30'



**BLOCK 127, LOT 201  
23 SOUTH ADAMS CONDOMINIUM  
23 SOUTH ADAMS AVENUE  
INSET "DD"**



NOTE: DIMENSIONS AND SQUARE FOOTAGE ARE TYPICAL FOR FIRST AND SECOND FLOOR

UNIT NO.	LOT NO.
C000A	C-01
C000B	C-02

**CONDOMINIUM DETAILS AND DIMENSIONS  
BLOCK 127, LOT 104  
BLOCK 127, LOT 201  
BLOCK 127, LOT 203  
BLOCK 127, LOT 204  
SEE PLATE 4**

"THIS TAX MAP PLATE HAS BEEN DIGITALLY DRAWN USING COMPUTER-AIDED DRAFTING/DESIGN (CADD) & COORDINATE GEOMETRY (COGO). IT IS BASED ON THE ORIGINAL DIGITALLY DRAWN TAX MAP PLATE BEARING THE OFFICIAL NEW JERSEY DIVISION TAXATION APPROVAL STAMP WITH APPROVAL DATE 6-3-2005 SERIAL NUMBER 846 AND SIGNATURES OF SIGNERS' THOMAS J. REILLY, CHIEF, LOCAL PROPERTY, FIELD ASSISTANCE, SANTO C. DIDONATO, SUPERVISING FIELD REPRESENTATIVE. THE ORIGINAL DIGITALLY DRAWN TAX MAP PLATE WITH THE OFFICIAL APPROVAL STAMP IS ON FILE WITH REMINGTON, VERNICK & WALBERG ENGINEERS."

**TAX MAP  
CITY OF MARGATE**

ATLANTIC COUNTY NEW JERSEY  
SCALE: AS NOTED DATE: 1-30-2004

**CRAIG F. REMINGTON LAND SURVEYOR LIC. NO. 23924**



**REMINGTON, VERNICK & WALBERG ENGINEERS**  
845 N. MAIN STREET, PLEASANTVILLE, NJ 08232  
(609) 645-710, FAX (609) 645-7076  
WEB SITE ADDRESS: WWW.RVE.COM