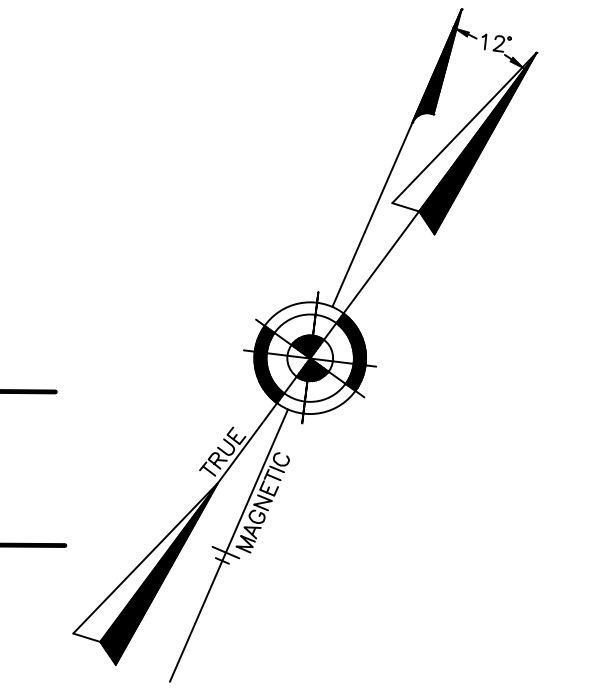
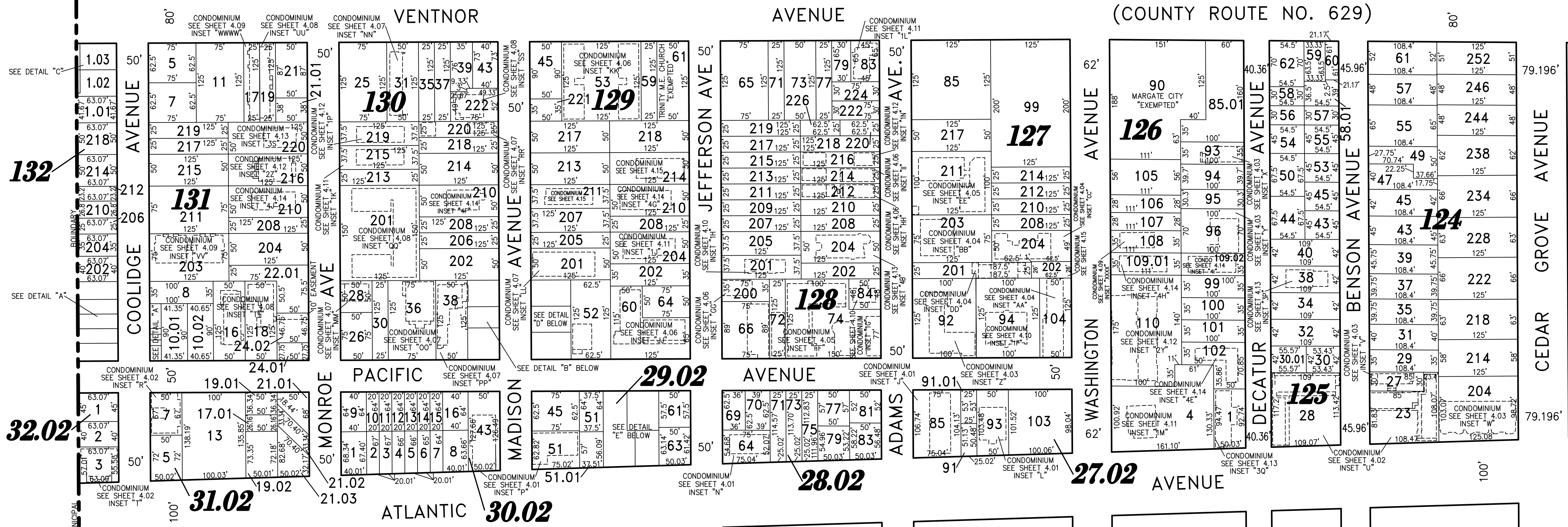


REVISIONS		
4-13-2007	CRAIG F. REMINGTON	23924
8-31-2009	CRAIG F. REMINGTON	23924
12-31-2010	CRAIG F. REMINGTON	23924
3-8-2012	CRAIG F. REMINGTON	23924
4-24-2014	CRAIG F. REMINGTON	23924
1-20-2015	CHARLES E. ADAMSON	42627
12-11-2015	CHARLES E. ADAMSON	42627
3-17-2018	CHARLES E. ADAMSON	42627
3-03-2020	CHARLES E. ADAMSON	42627
4-1-2021	CHARLES E. ADAMSON	42627
3-24-2022	CHARLES E. ADAMSON	42627

SHEET 5

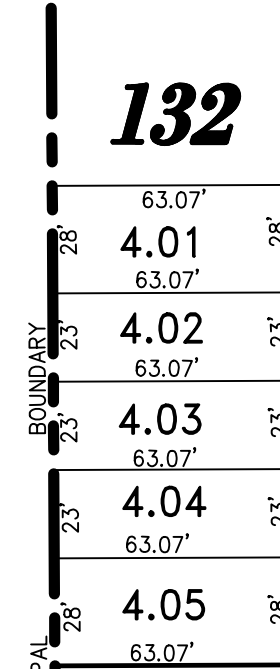


BOROUGH OF LONGPORT

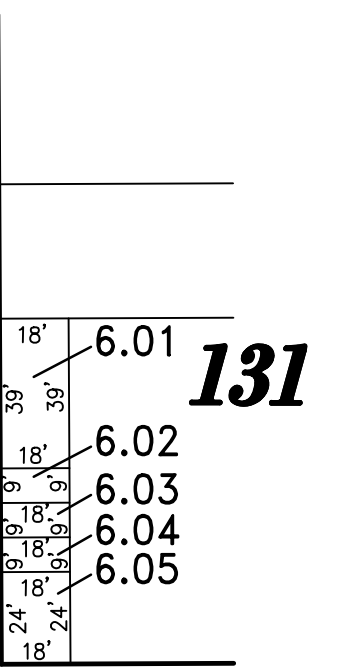


SHEET 3

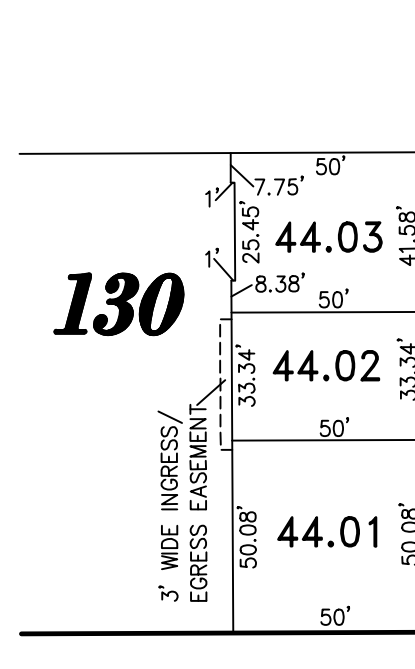
SHEET 23



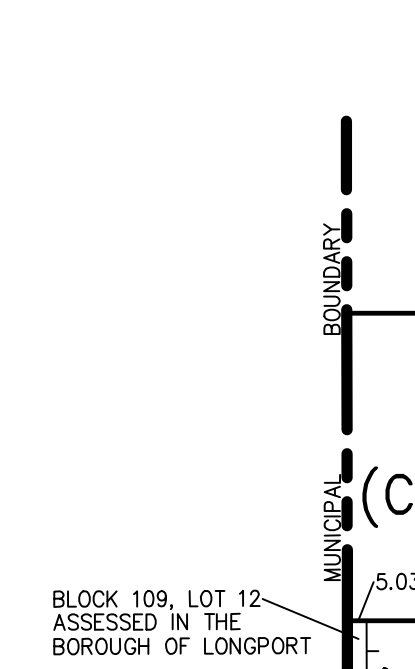
DETAIL "A" SCALE: 1"=50'



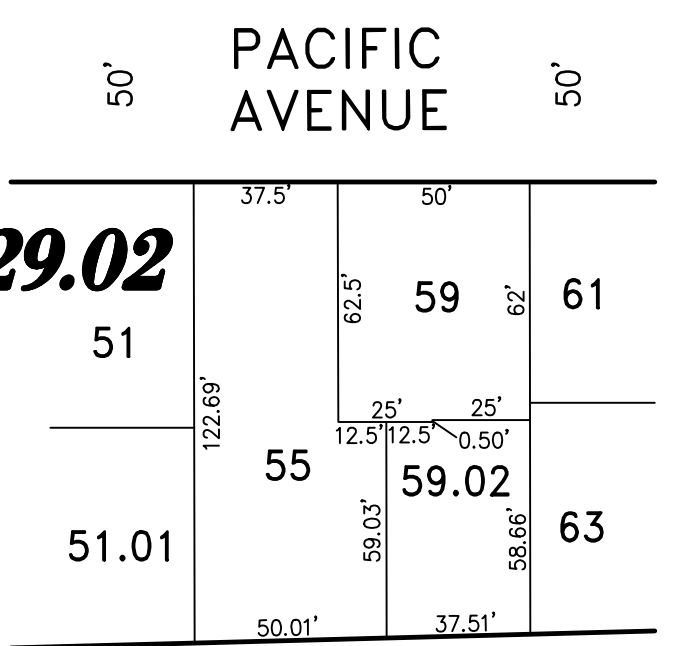
DETAIL "B" SCALE: 1"=50'



DETAIL "C" SCALE: 1"=50'



DETAIL "D" SCALE: 1"=50'



DETAIL "E" SCALE: 1"=50'

"THIS TAX MAP PLATE HAS BEEN DIGITALLY DRAWN USING COMPUTER-AIDED DRAFTING/DESIGN (CADD) & COORDINATE GEOMETRY (COGO). IT IS BASED ON THE ORIGINAL DIGITALLY DRAWN TAX MAP PLATE BEARING THE OFFICIAL NEW JERSEY DIVISION TAXATION APPROVAL STAMP WITH APPROVAL DATE 6-3-2005 SERIAL NUMBER 846 AND SIGNATURES OF SIGNERS' THOMAS J. REILLY, CHIEF, LOCAL PROPERTY, FIELD ASSISTANCE, SANTO C. DIDONATO, SUPERVISING FIELD REPRESENTATIVE. THE ORIGINAL DIGITALLY DRAWN TAX MAP PLATE WITH THE OFFICIAL APPROVAL STAMP IS ON FILE WITH REMINGTON, VERNICK & WALBERG ENGINEERS."



TAX MAP CITY OF MARGATE

ATLANTIC COUNTY NEW JERSEY
SCALE: 1" = 100' DATE: 11-01-2003

CRAIG F. REMINGTON LAND SURVEYOR LIC. NO. 23924

REMINGTON, VERNICK & WALBERG ENGINEERS
24 GA 28048700
845 N. MAIN STREET, PLEASANTVILLE, NJ 08232
(609) 645-7100, FAX (609) 645-7076
WEB SITE ADDRESS: WWW.RVE.COM