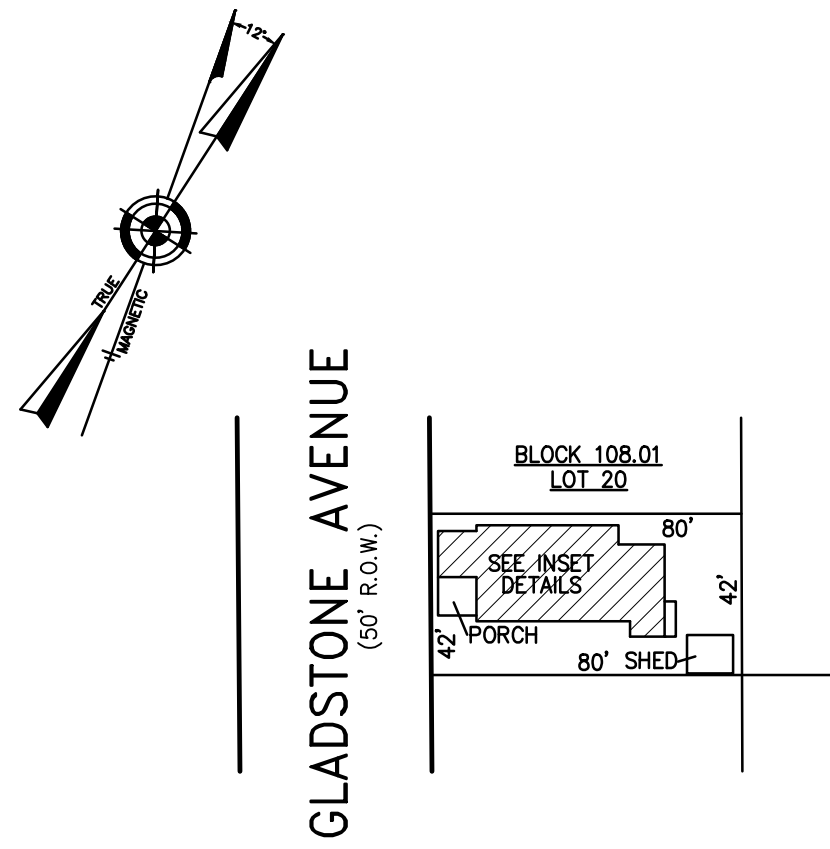
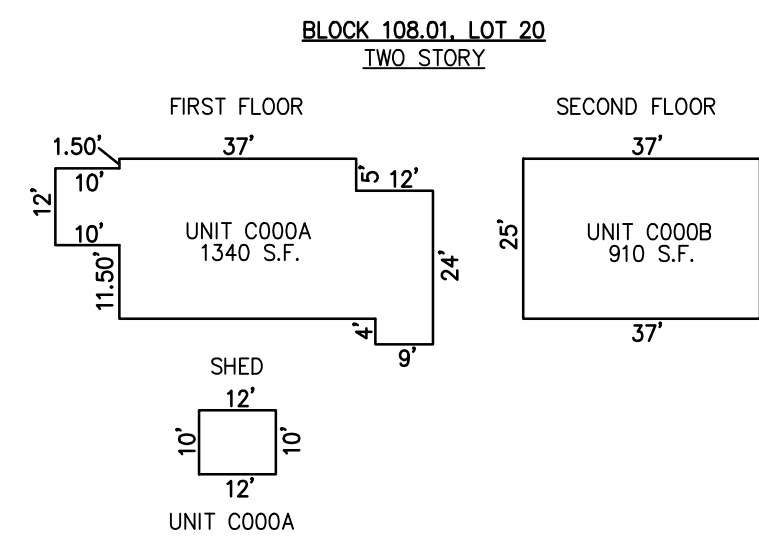


REVISIONS		
4-13-2007	CRAIG F. REMINGTON	23924
1-29-2019	CHARLES E. ADAMSON	42627



PLAN
SCALE: 1"=50'

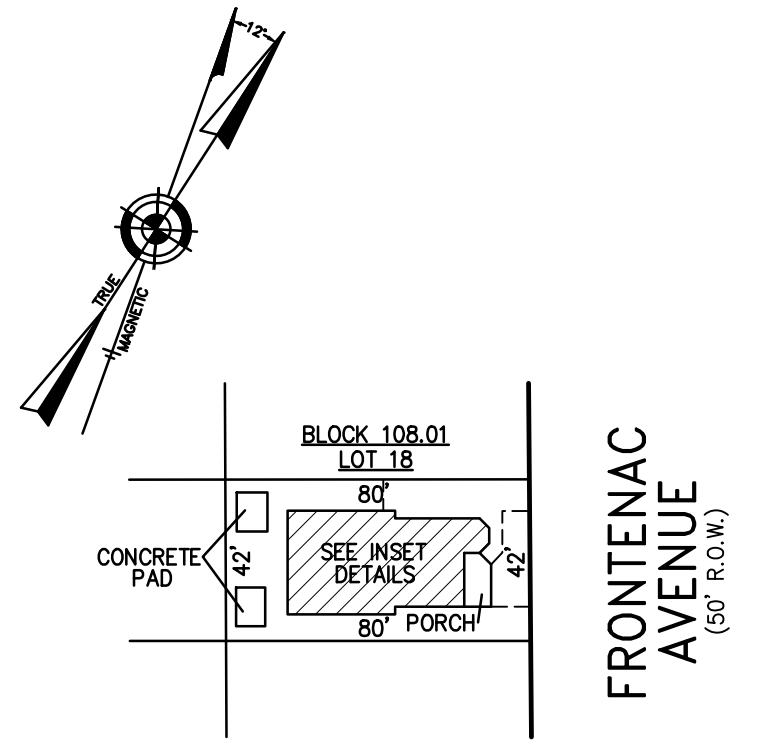


NOTE: DIMENSIONS AND SQUARE FOOTAGE ARE TYPICAL FOR FIRST AND SECOND FLOOR

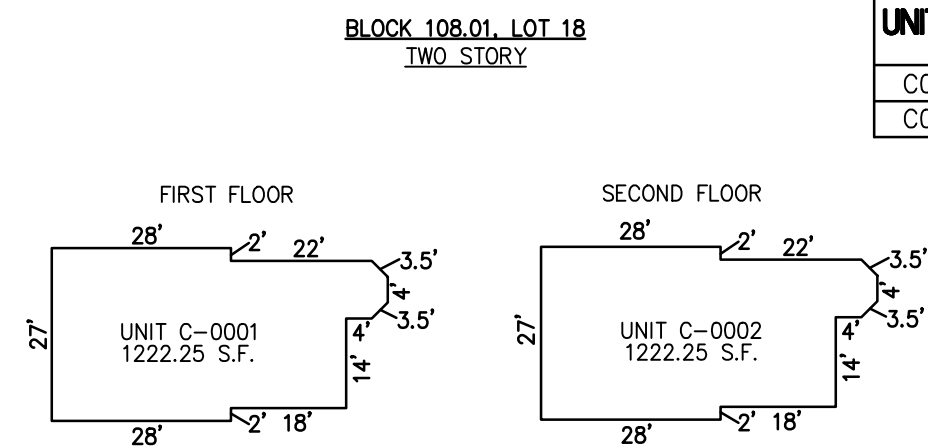
DETAILS
SCALE: 1"=30'

BLOCK 108.01, LOT 20
9 SOUTH GLADSTONE CONDOMINIUM
9 SOUTH GLADSTONE AVENUE
INSET "1 D"

UNIT NO.	LOT NO.
C000A	C-01
C000B	C-02



PLAN
SCALE: 1"=50'

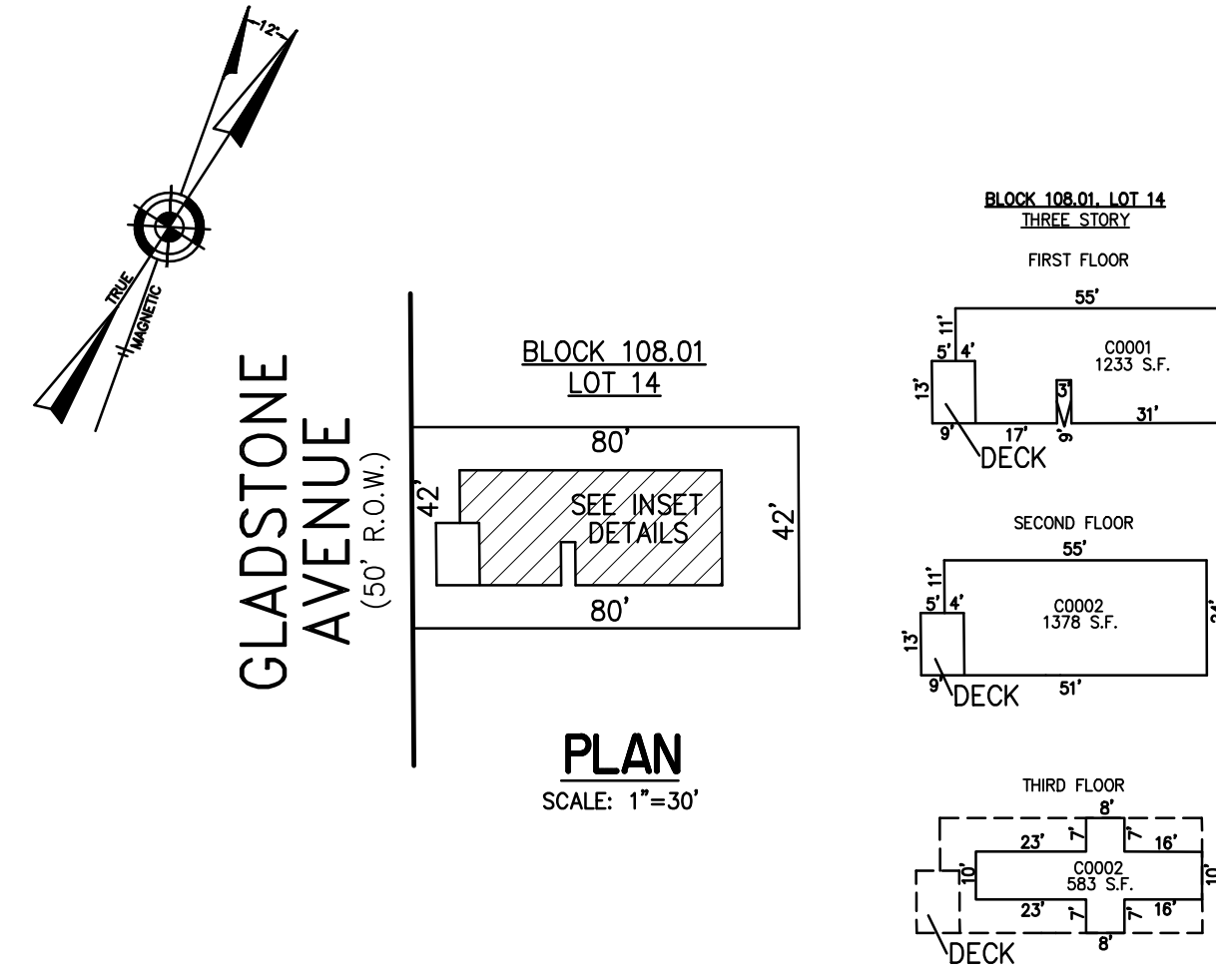


NOTE: 1. DIMENSIONS AND SQUARE FOOTAGE ARE TYPICAL FOR FIRST AND SECOND FLOOR

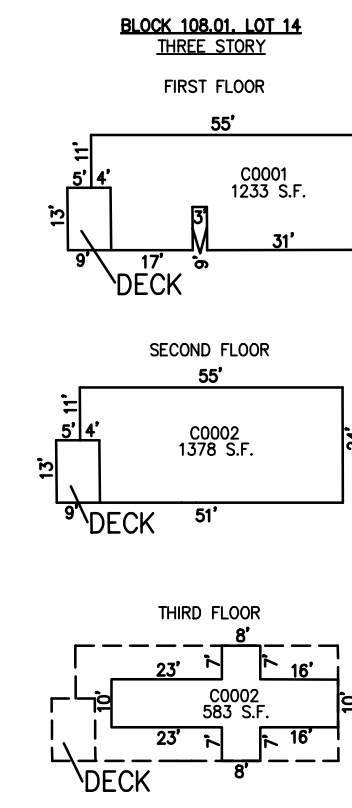
DETAILS
SCALE: 1"=30'

BLOCK 108.01, LOT 18
10 SOUTH FRONTENAC AVENUE CONDOMINIUM
10 SOUTH FRONTENAC AVENUE
INSET "1 E"

CONDOMINIUM DETAILS AND DIMENSIONS
BLOCK 108.01, LOT 14
BLOCK 108.01, LOT 18
BLOCK 108.01, LOT 20
SEE PLATE 2



PLAN
SCALE: 1"=30'



UNIT NO.	LOT NO.
C0001	C-01
C0002	C-02

DETAILS
SCALE: 1"=30'

BLOCK 108.01, LOT 14
13 SOUTH GLADSTONE CONDOMINIUMS
13 SOUTH GLADSTONE AVENUE
INSET "1 F"

"THIS TAX MAP PLATE HAS BEEN DIGITALLY DRAWN USING COMPUTER-AIDED DRAFTING/DESIGN (CADD) & COORDINATE GEOMETRY (COGO). IT IS BASED ON THE ORIGINAL DIGITALLY DRAWN TAX MAP PLATE BEARING THE OFFICIAL NEW JERSEY DIVISION TAXATION APPROVAL STAMP WITH APPROVAL DATE: 6-3-2005 SERIAL NUMBER 846 AND SIGNATURES OF SIGNERS: THOMAS J. REILLY, CHIEF, LOCAL PROPERTY, FIELD ASSISTANCE; SANTO C. DIDONATO, SUPERVISING FIELD REPRESENTATIVE. THE ORIGINAL DIGITALLY DRAWN TAX MAP PLATE WITH THE OFFICIAL APPROVAL STAMP IS ON FILE WITH REMINGTON, VERNICK & WALBERG ENGINEERS."

TAX MAP
CITY OF MARGATE

ATLANTIC COUNTY NEW JERSEY
SCALE: AS NOTED DATE: 1-30-2004

CRAIG F. REMINGTON LAND SURVEYOR LIC. NO. 23924



REMINGTON, VERNICK & WALBERG ENGINEERS
24 GA 28048700
845 N. MAIN STREET, PLEASANTVILLE, N.J. 08232
(609) 645-7100, FAX (609) 645-7076
WEB SITE ADDRESS: WWW.RVW.COM