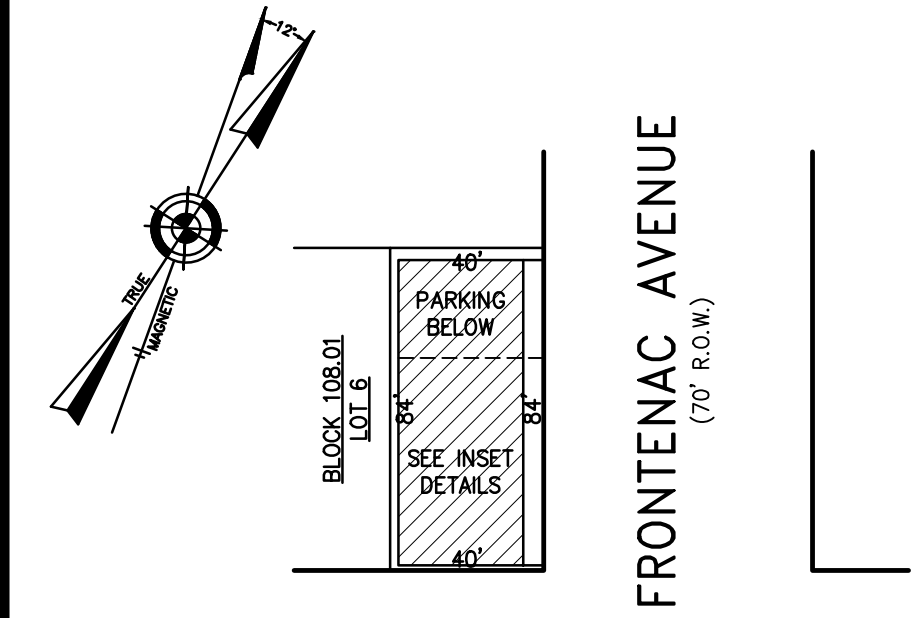
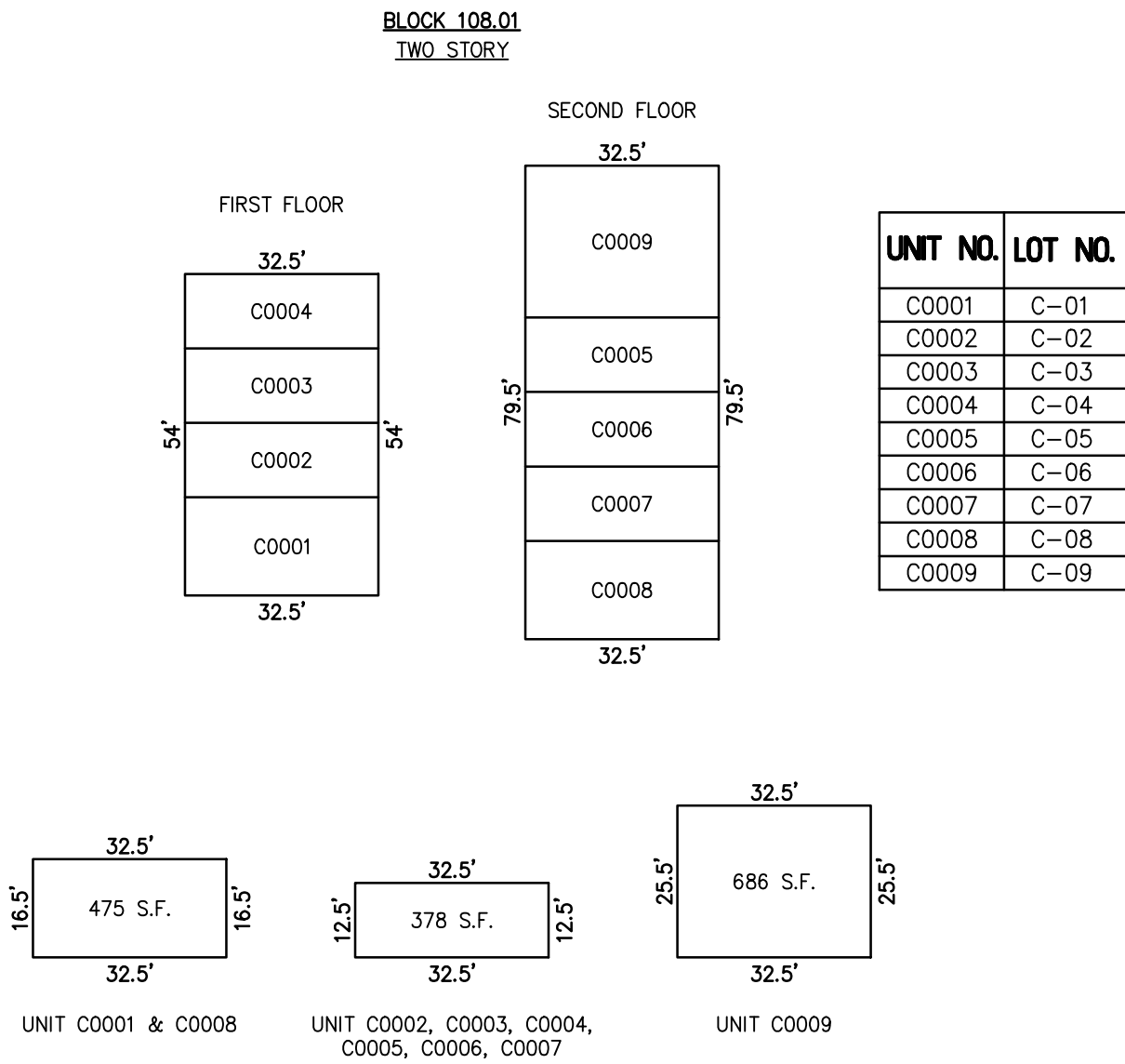


REVISIONS		
1-29-2019	CHARLES E. ADAMSON	42627



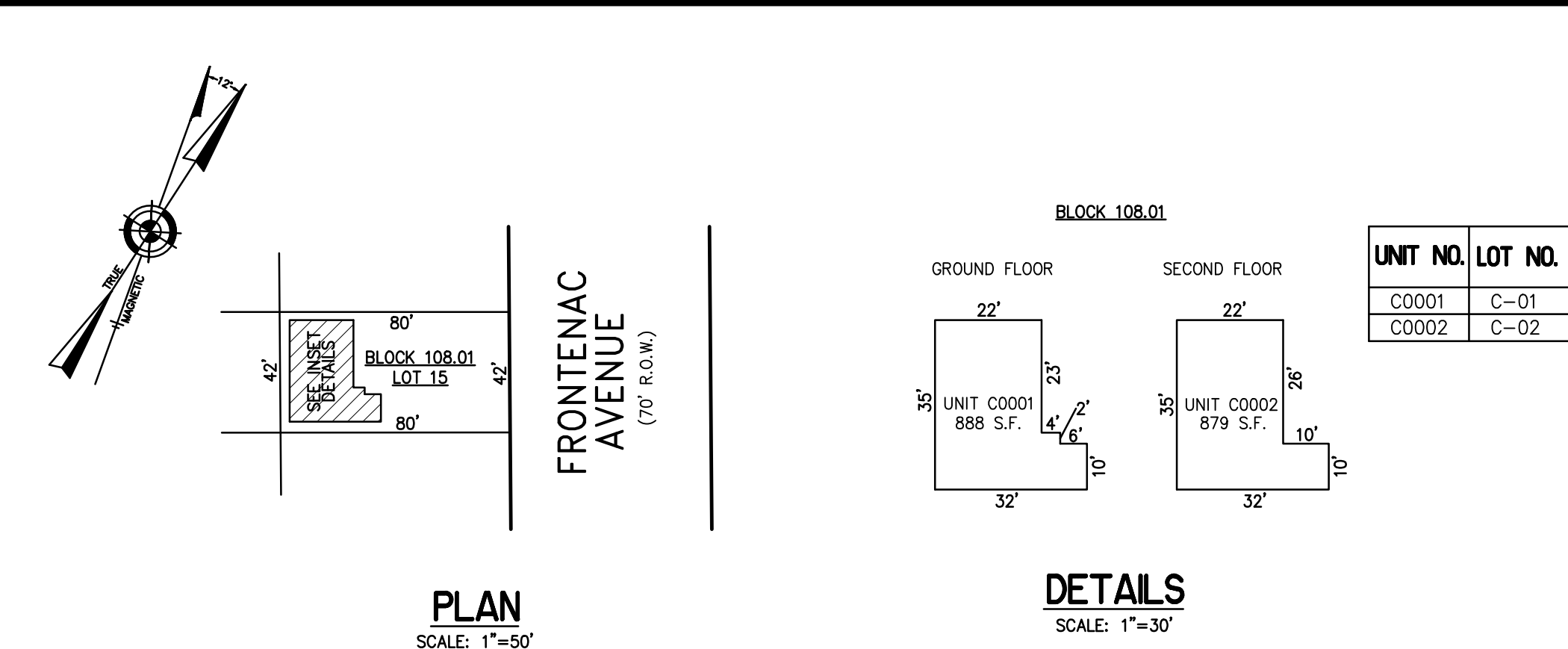
ATLANTIC AVENUE  
(100' R.O.W.)

PLAN  
SCALE: 1"=50'



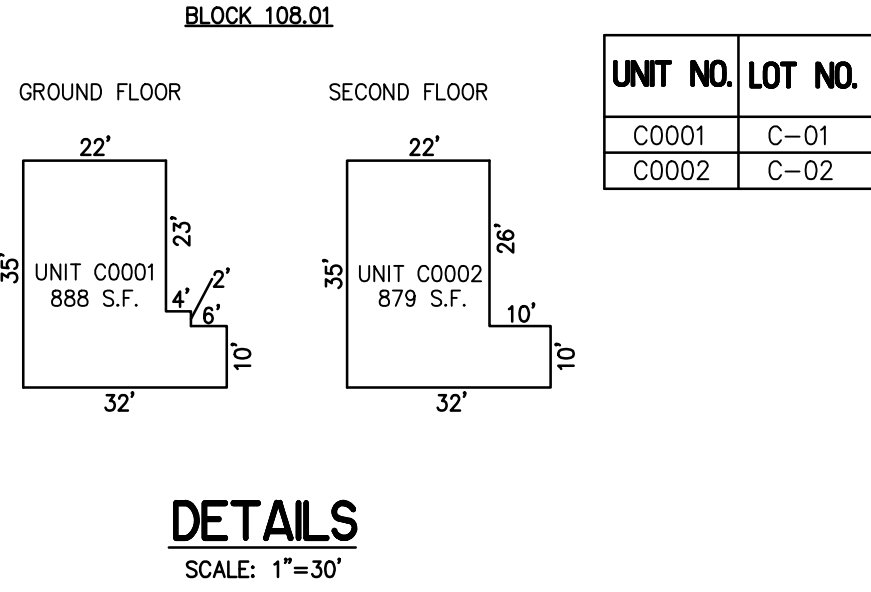
DETAILS  
SCALE: 1"=30'

BLOCK 108.01, LOT 6  
MARGATE BEACH CLUB CONDOMINIUM  
8001 ATLANTIC AVENUE  
INSET "D"

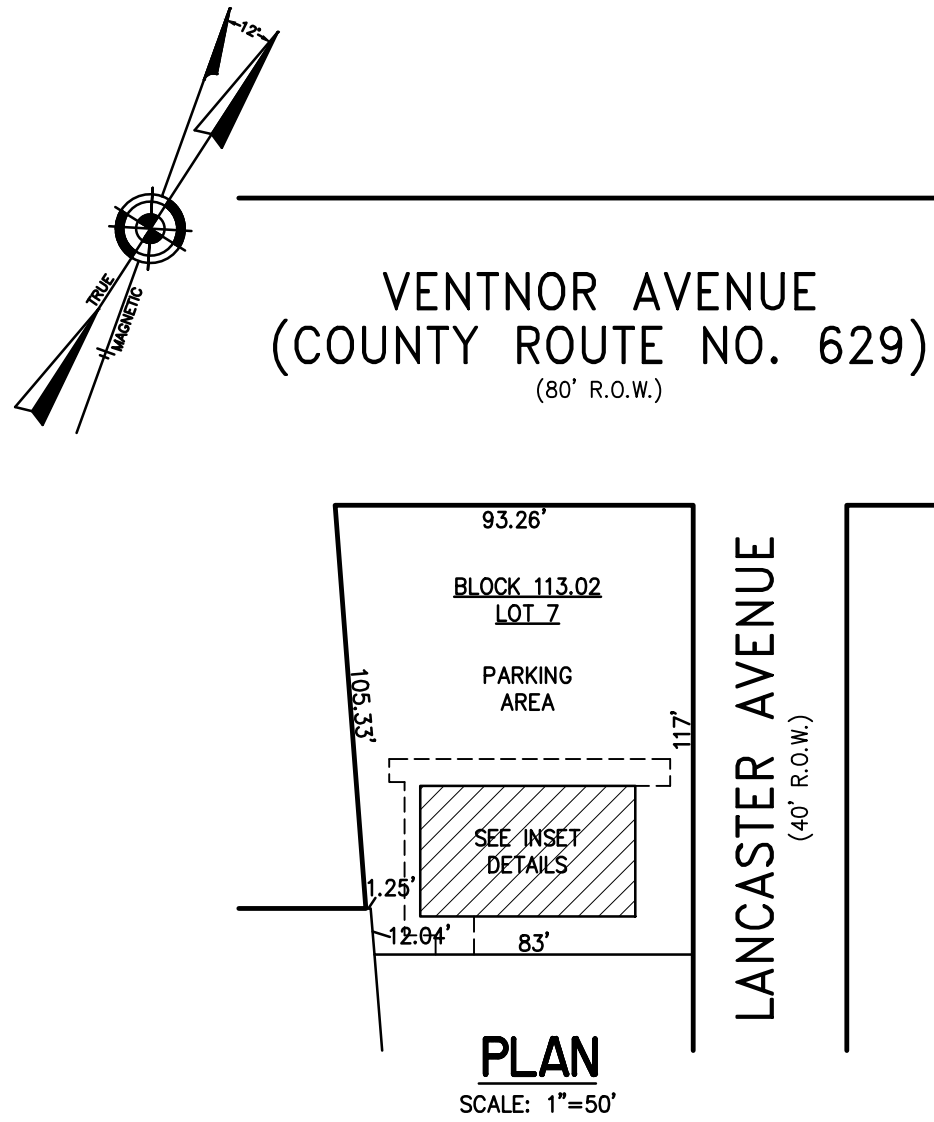


PLAN  
SCALE: 1"=50'

BLOCK 108.01, LOT 15  
12 SOUTH FRONTENAC CONDOMINIUM  
12 SOUTH FRONTENAC AVENUE  
INSET "UUU"

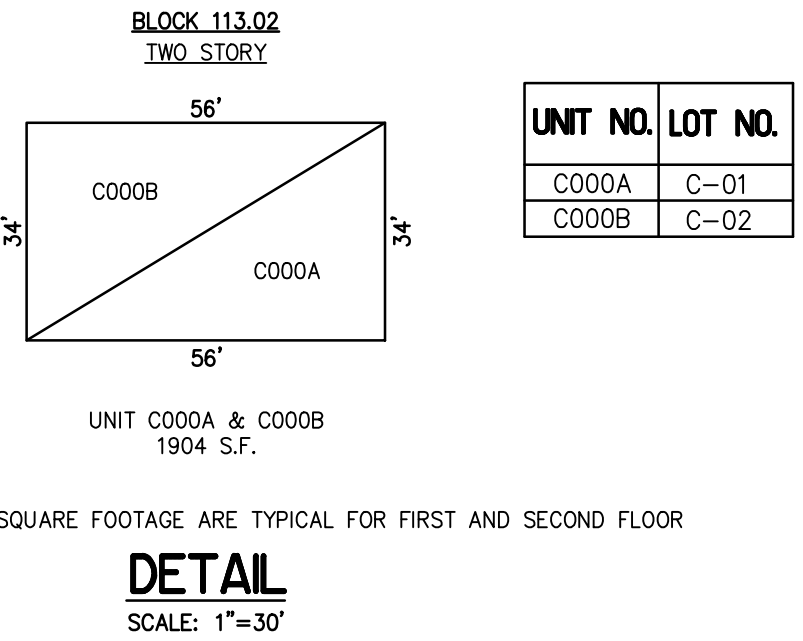


DETAILS  
SCALE: 1"=30'

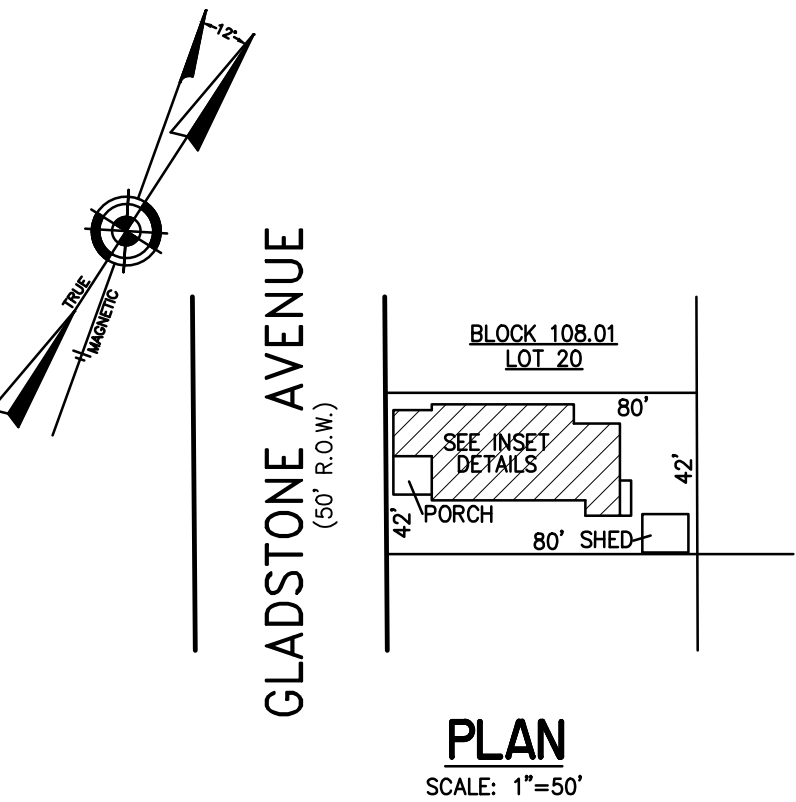


PLAN  
SCALE: 1"=50'

BLOCK 113.02, LOT 7  
8512 CONDOMINIUM  
8512 VENTNOR AVENUE  
INSET "E"

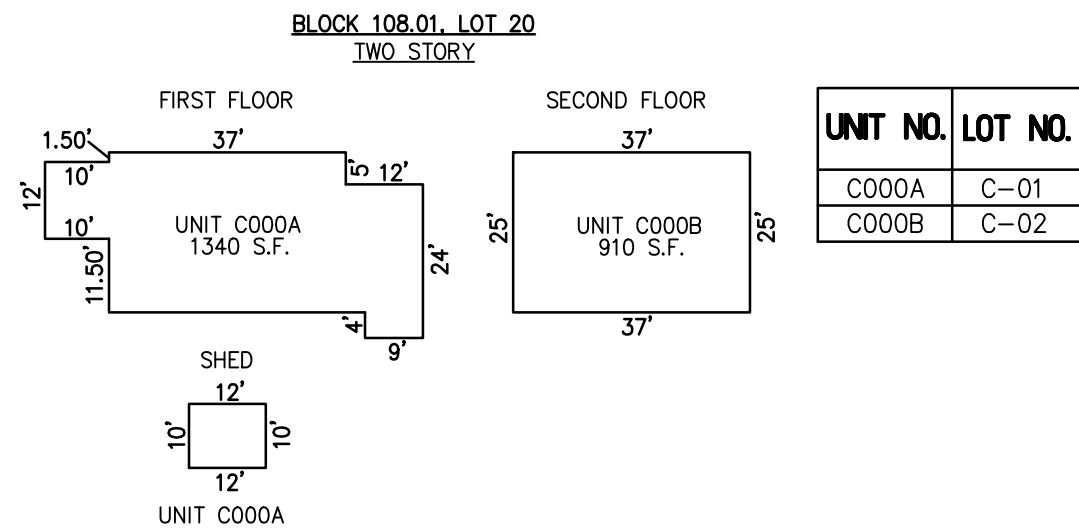


DETAIL  
SCALE: 1"=30'

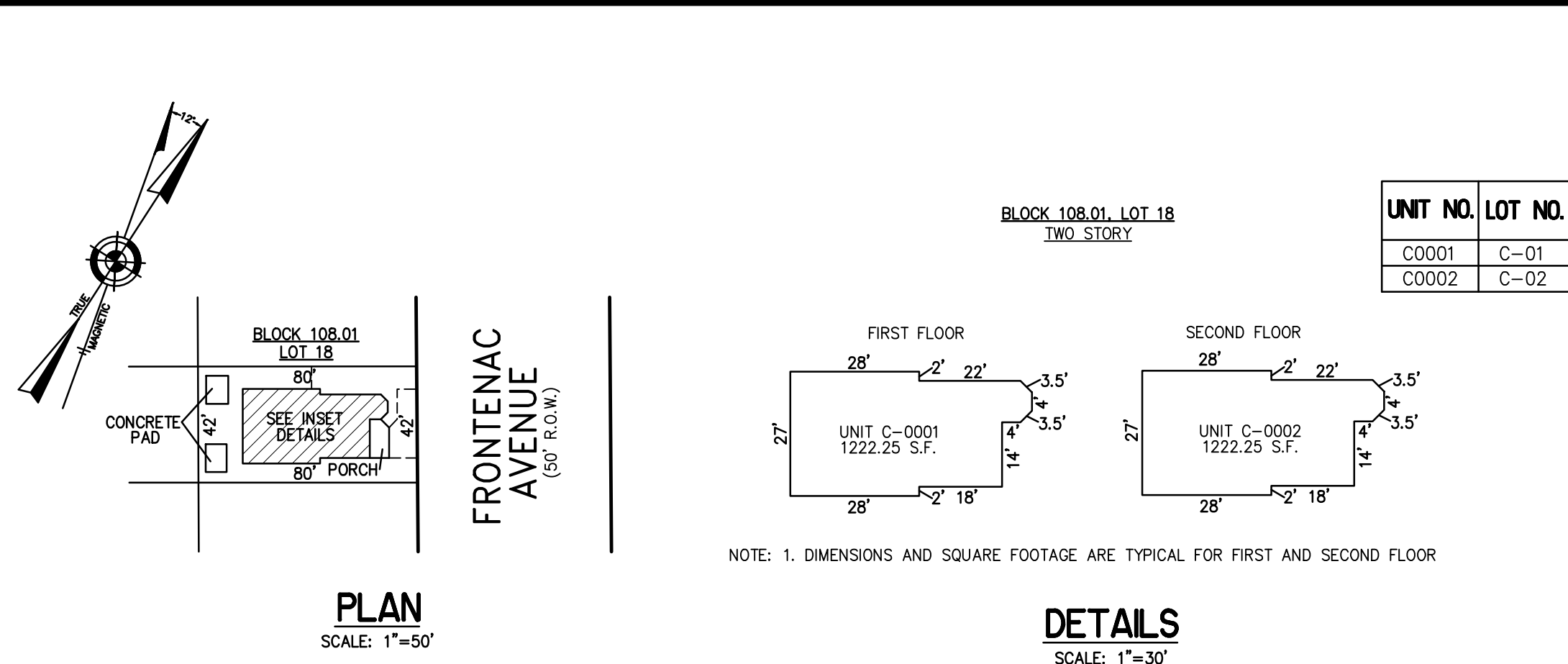


PLAN  
SCALE: 1"=50'

BLOCK 108.01, LOT 20  
9 SOUTH GLADSTONE CONDOMINIUM  
9 SOUTH GLADSTONE AVENUE  
INSET "1 D"

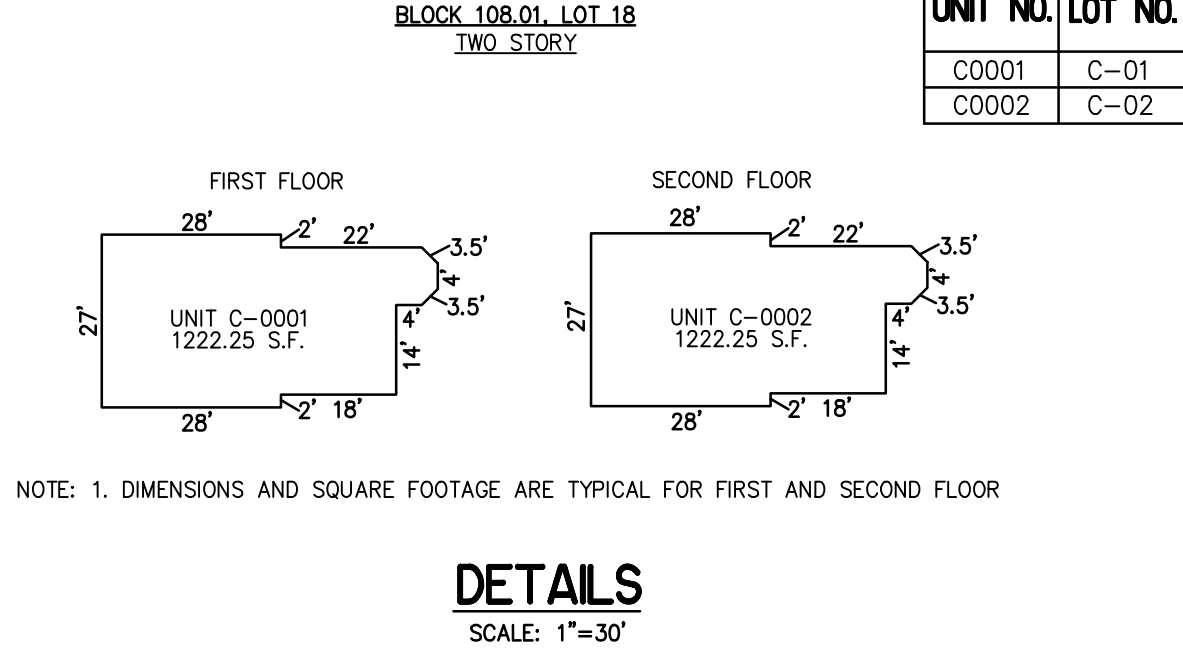


DETAILS  
SCALE: 1"=30'

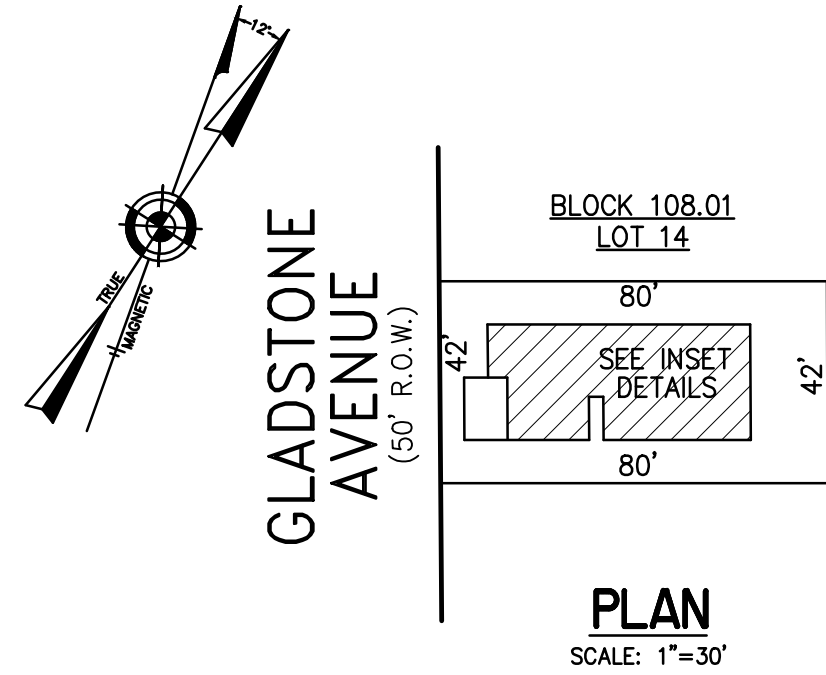


PLAN  
SCALE: 1"=50'

BLOCK 108.01, LOT 18  
10 SOUTH FRONTENAC AVENUE CONDOMINIUM  
10 SOUTH FRONTENAC AVENUE  
INSET "1 E"

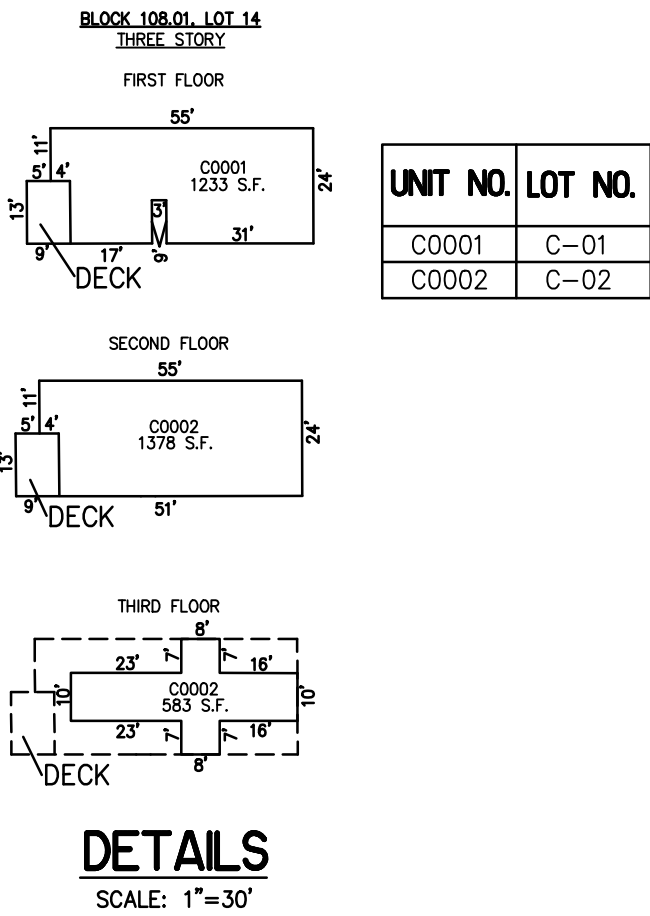


DETAILS  
SCALE: 1"=30'



PLAN  
SCALE: 1"=30'

BLOCK 108.01, LOT 14  
13 SOUTH GLADSTONE CONDOMINIUMS  
13 SOUTH GLADSTONE AVENUE



DETAILS  
SCALE: 1"=30'

CONDOMINIUM DETAILS AND DIMENSIONS  
BLOCK 108.01 LOT 6  
BLOCK 108.01 LOT 14  
BLOCK 108.01 LOT 15  
BLOCK 108.01 LOT 18  
BLOCK 108.01 LOT 20  
BLOCK 113.02 LOT 7  
SEE PLATE 2

TAX MAP  
CITY OF MARGATE

ATLANTIC COUNTY NEW JERSEY  
SCALE: AS NOTED DATE: 1-30-2004

CRAIG F. REMINGTON LAND SURVEYOR LIC. NO. 23924



REMINGTON, VERNICK & WALBERG ENGINEERS  
845 N. MAIN STREET, PLEASANTVILLE, N.J. 08232  
(609) 645-7100, FAX (609) 645-7076  
WEB SITE ADDRESS: WWW.RVE.COM

"THIS TAX MAP PLATE HAS BEEN DIGITALLY DRAWN USING COMPUTER-AIDED DRAFTING/DESIGN (CADD) & COORDINATE GEOMETRY (COGO). IT IS BASED ON THE ORIGINAL DIGITALLY DRAWN TAX MAP PLATE BEARING THE OFFICIAL NEW JERSEY DIVISION TAXATION APPROVAL STAMP WITH APPROVAL DATE: 6-3-2005 SERIAL NUMBER 846 AND SIGNATURES OF SIGNERS: THOMAS J. REILLY, CHIEF, LOCAL PROPERTY, FIELD ASSISTANCE; SANTO C. DIDONATO, SUPERVISING FIELD REPRESENTATIVE. THE ORIGINAL DIGITALLY DRAWN TAX MAP PLATE, WITH THE OFFICIAL APPROVAL STAMP IS ON FILE WITH REMINGTON, VERNICK & WALBERG ENGINEERS."