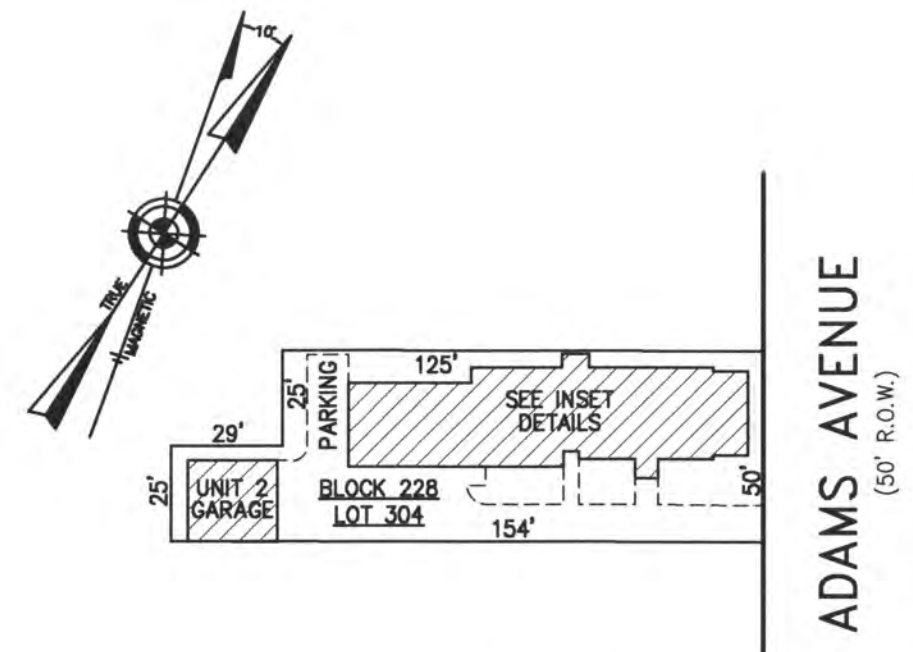
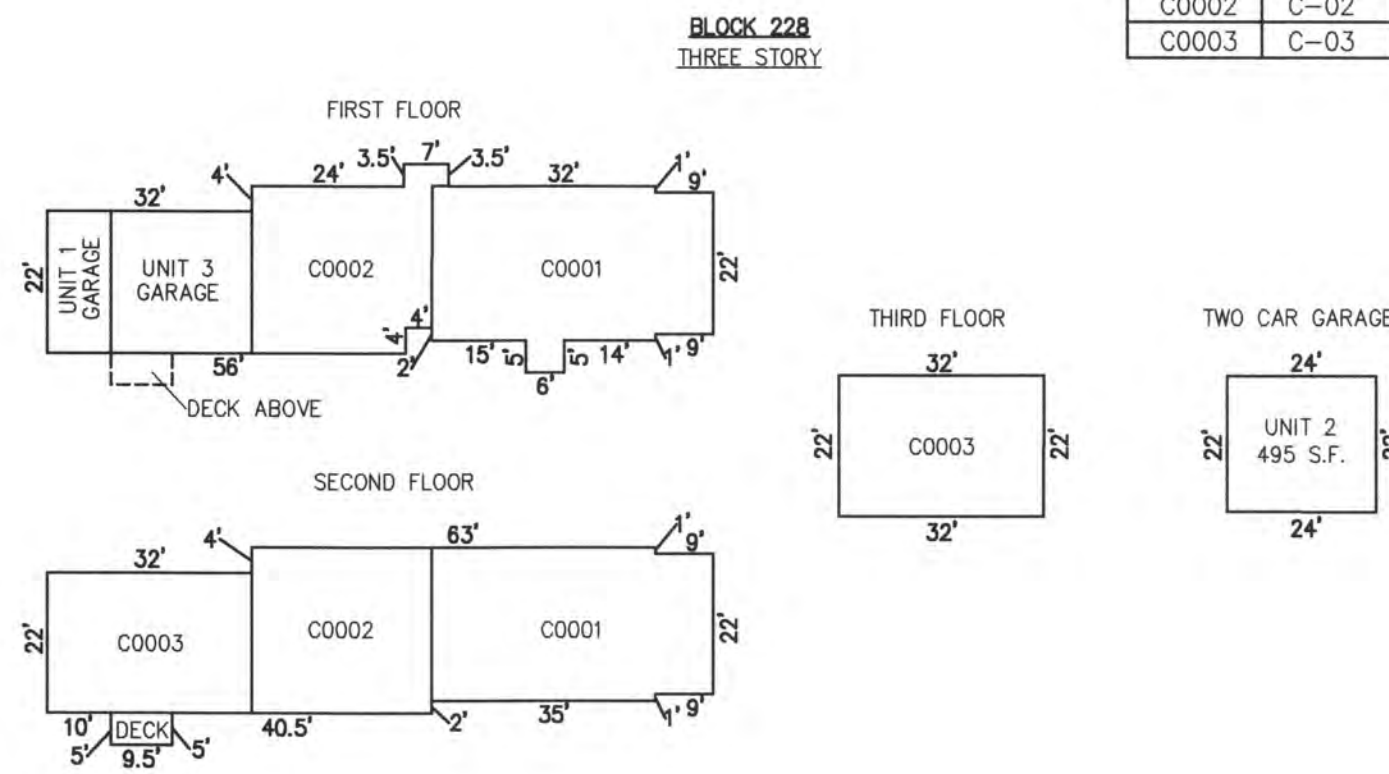


REVISIONS		
4-13-2007	CRAIG F. REMINGTON	23924



**PLAN**  
SCALE: 1"=50'

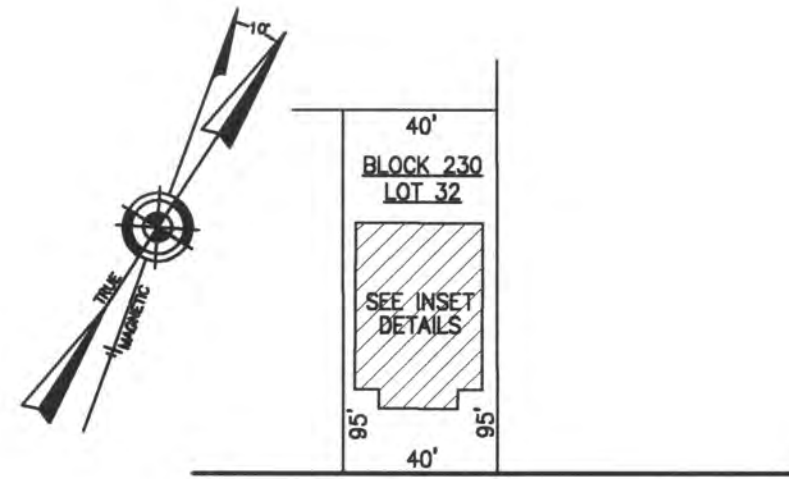
UNIT NO.	LOT NO.
C0001	C-01
C0002	C-02
C0003	C-03



**DETAILS**  
SCALE: 1"=30'

**BLOCK 228, LOT 304**  
**RITON CONDOMINIUM**  
**10 NORTH ADAMS AVENUE**  
**INSET "YYYY"**

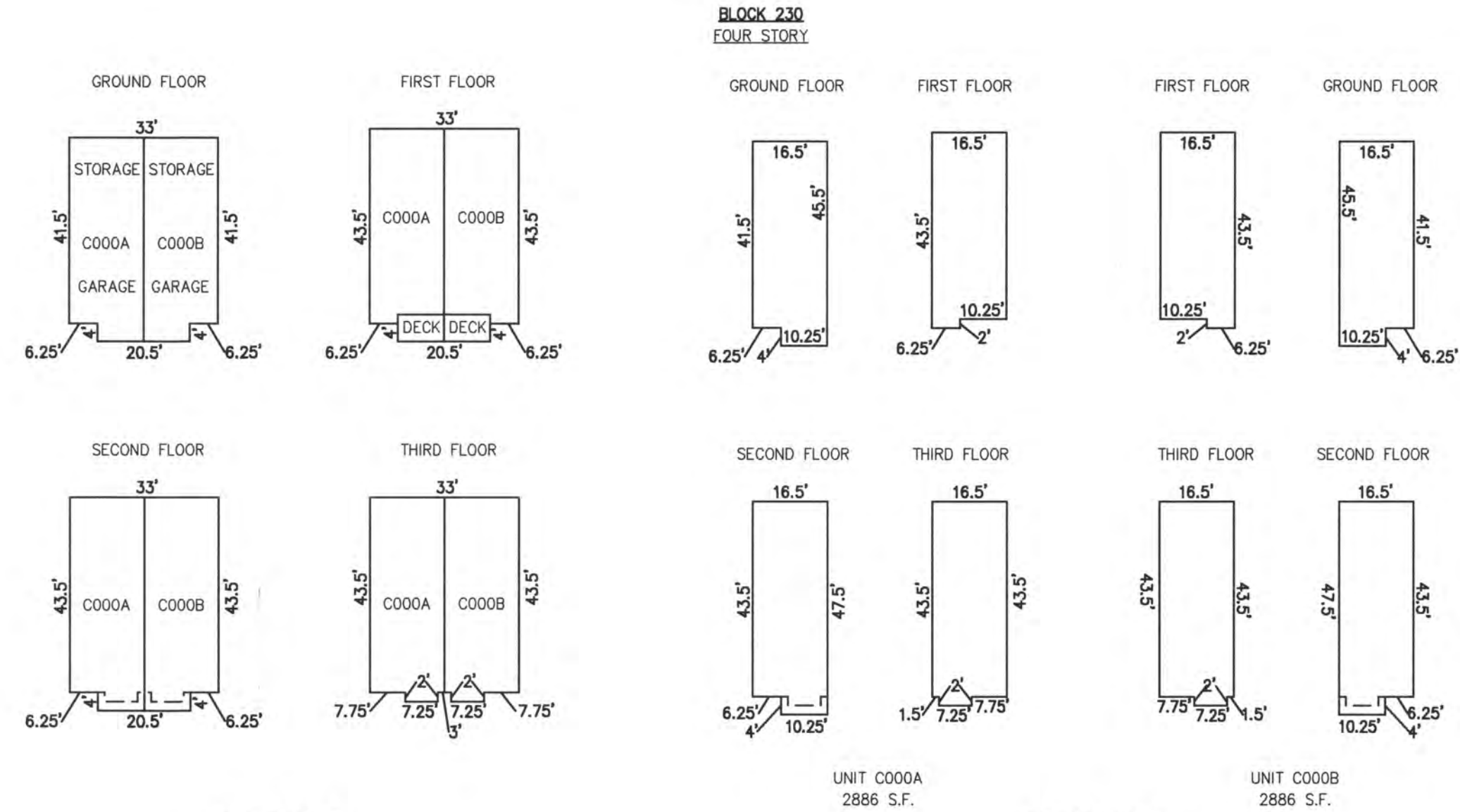
**CONDOMINIUM DETAILS AND DIMENSIONS**  
BLOCK 228, LOT 304  
BLOCK 230, LOT 32  
BLOCK 328, LOT 415  
BLOCK 329, LOT 406  
SEE PLATE 5



**VENTNOR AVENUE**  
**(COUNTY ROUTE NO. 629)**  
**(80' R.O.W.)**

**PLAN**  
SCALE: 1"=50'

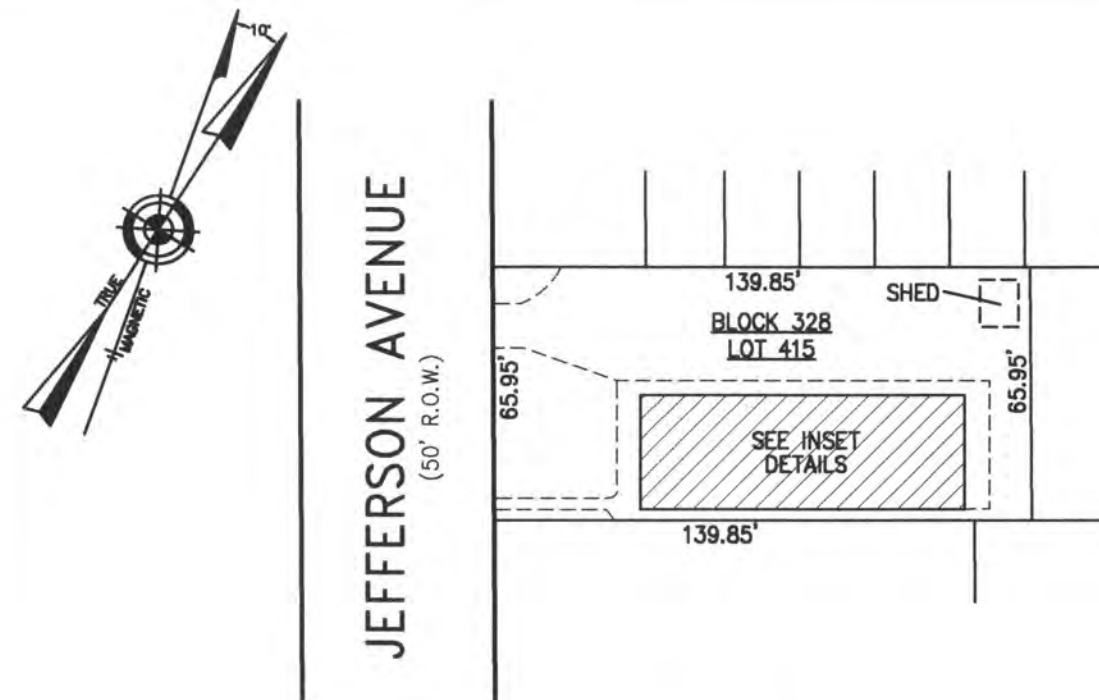
**BLOCK 230, LOT 32**  
**9613 CONDOMINIUM ASSOCIATION**  
**9613 VENTNOR AVENUE**  
**INSET "ZZZZ"**



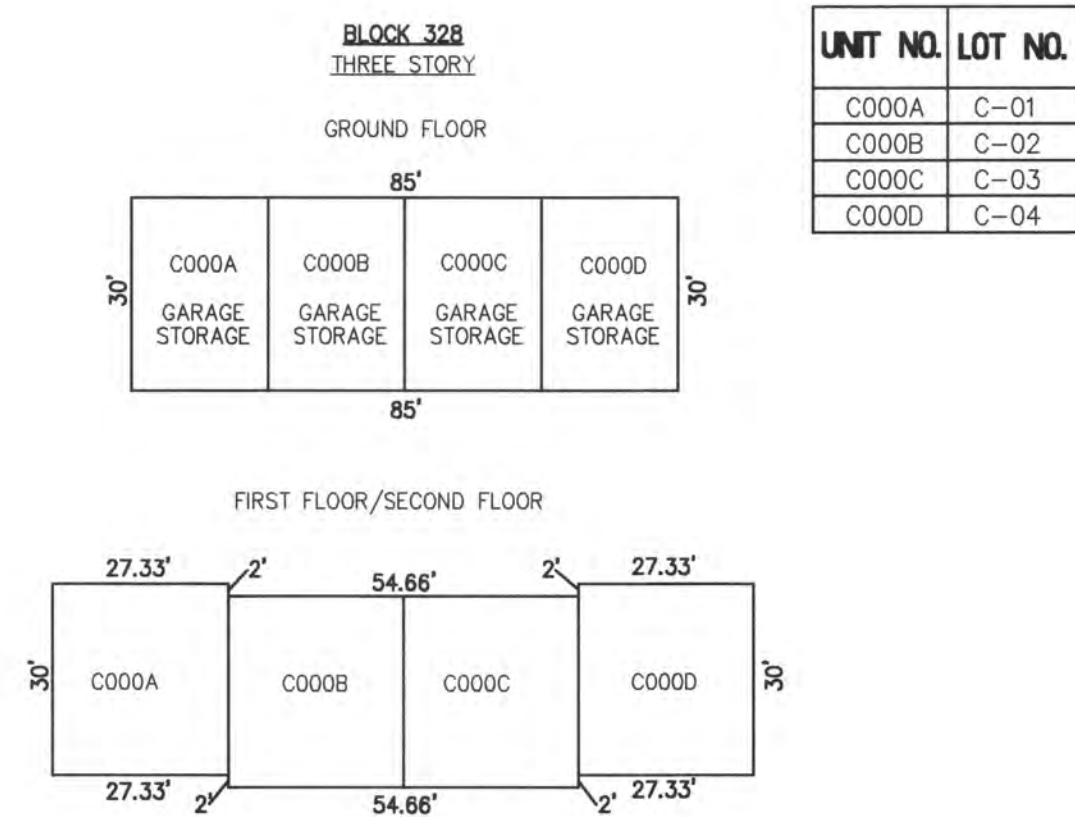
**DETAILS**  
SCALE: 1"=30'

**DETAILS**  
SCALE: 1"=30'

UNIT NO.	LOT NO.
C000A	C-01
C000B	C-02



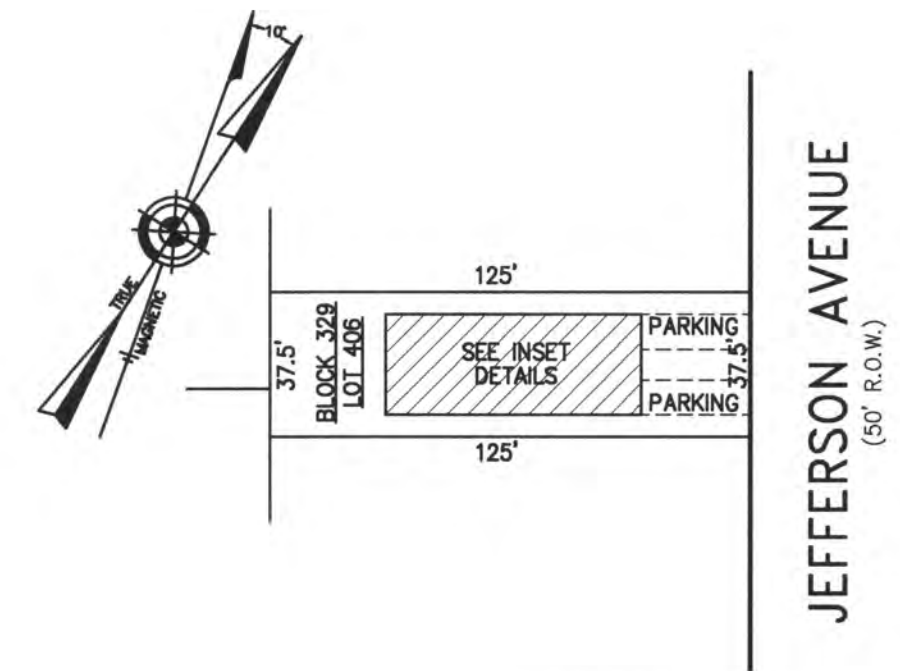
**PLAN**  
SCALE: 1"=50'



**DETAILS**  
SCALE: 1"=30'

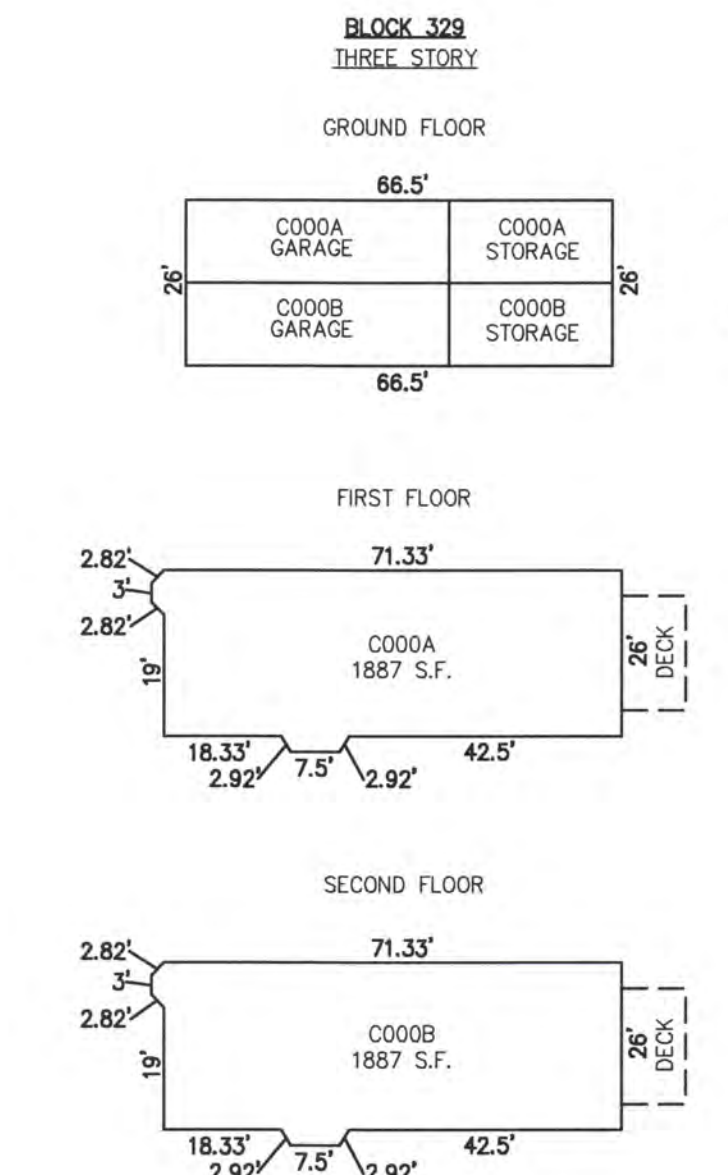
**BLOCK 328, LOT 415**  
**119 NORTH JEFFERSON CONDOMINIUM**  
**119 NORTH JEFFERSON AVENUE**  
**INSET "1 A"**

NOTE: 1. DIMENSIONS AND SQUARE FOOTAGE ARE TYPICAL FOR FIRST AND SECOND FLOOR  
2. DIMENSIONS AND SQUARE FOOTAGE ARE TYPICAL FOR SIMILAR UNITS



**PLAN**  
SCALE: 1"=50'

**BLOCK 329, LOT 406**  
**110 NORTH JEFFERSON AVENUE CONDOMINIUM**  
**110 NORTH JEFFERSON AVENUE**  
**INSET "1 B"**



**DETAILS**  
SCALE: 1"=30'

UNIT NO.	LOT NO.
C000A	C-01
C000B	C-02

"THIS TAX MAP PLATE HAS BEEN DIGITALLY DRAWN USING COMPUTER-AIDED DRAFTING/DESIGN (CADD) & COORDINATE GEOMETRY (COGO). IT IS BASED ON THE ORIGINAL DIGITALLY DRAWN TAX MAP PLATE BEARING THE OFFICIAL NEW JERSEY DIVISION TAXATION APPROVAL STAMP WITH APPROVAL DATE 6-3-2005 SERIAL NUMBER 846 AND SIGNATURES OF SIGNERS' THOMAS J. REILLY, CHIEF, LOCAL PROPERTY, FIELD ASSISTANCE, SANTO C. DIDONATO, SUPERVISING FIELD REPRESENTATIVE. THE ORIGINAL DIGITALLY DRAWN TAX MAP PLATE WITH THE OFFICIAL APPROVAL STAMP IS ON FILE WITH REMINGTON, VERNICK & WALBERG ENGINEERS."

**TAX MAP**  
**CITY OF MARGATE**

ATLANTIC COUNTY NEW JERSEY  
SCALE: AS NOTED DATE: 1-30-2004

**CRAIG F. REMINGTON LAND SURVEYOR LIC. NO. 23924**



**REMINGTON, VERNICK & WALBERG ENGINEERS**  
24 GA 28048700  
845 N. MAIN STREET, PLEASANTVILLE, NJ 08232  
(609) 645-7100, FAX (609) 645-7076  
WEB SITE ADDRESS: WWW.RVWE.COM