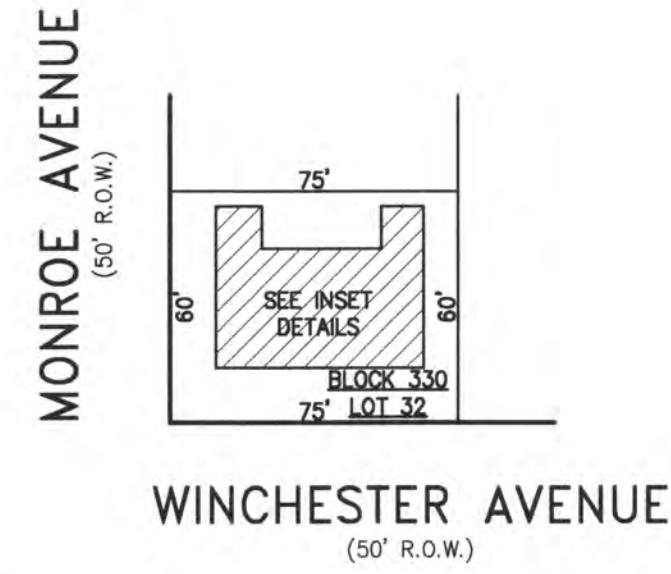
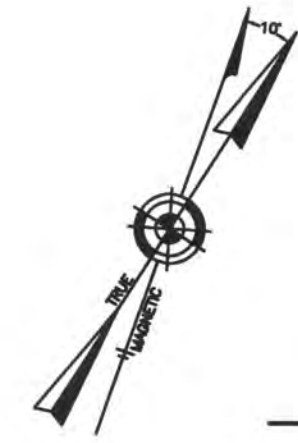
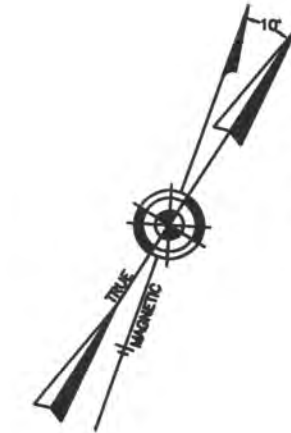
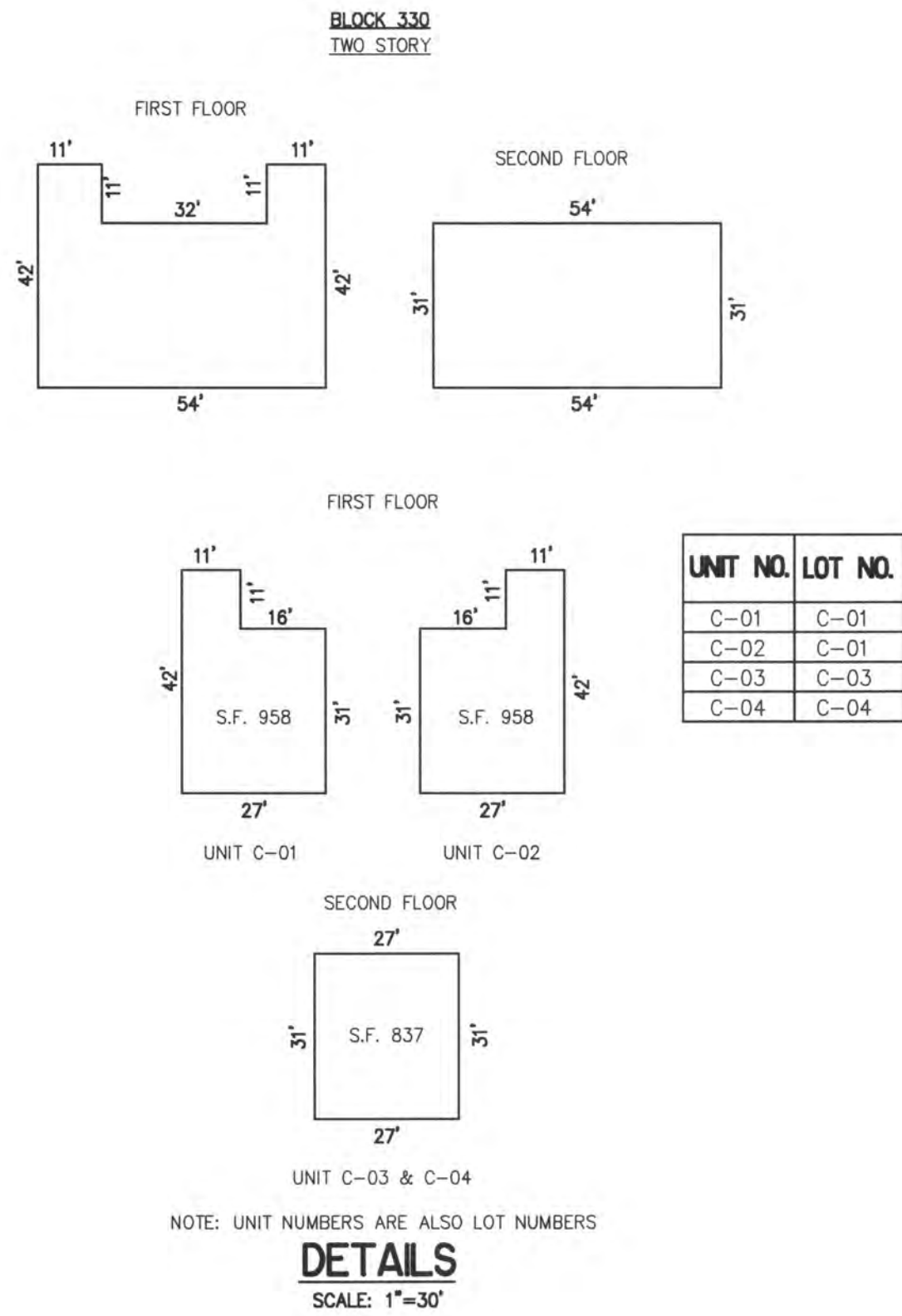


REVISIONS

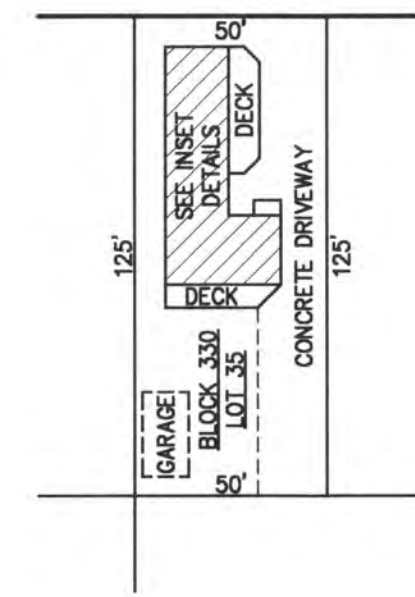



**PLAN**  
SCALE: 1"=50'

**BLOCK 330, LOT 32**  
**GERARD CONDOMINIUM**  
9613-15 WINCHESTER AVENUE  
INSET "VVV"

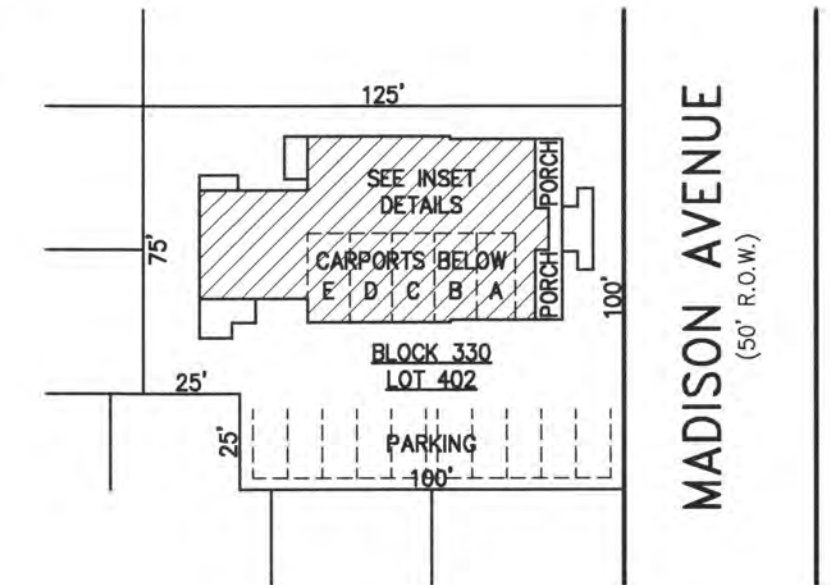
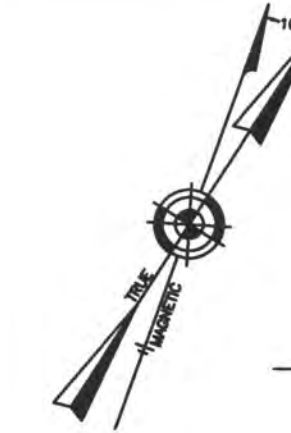
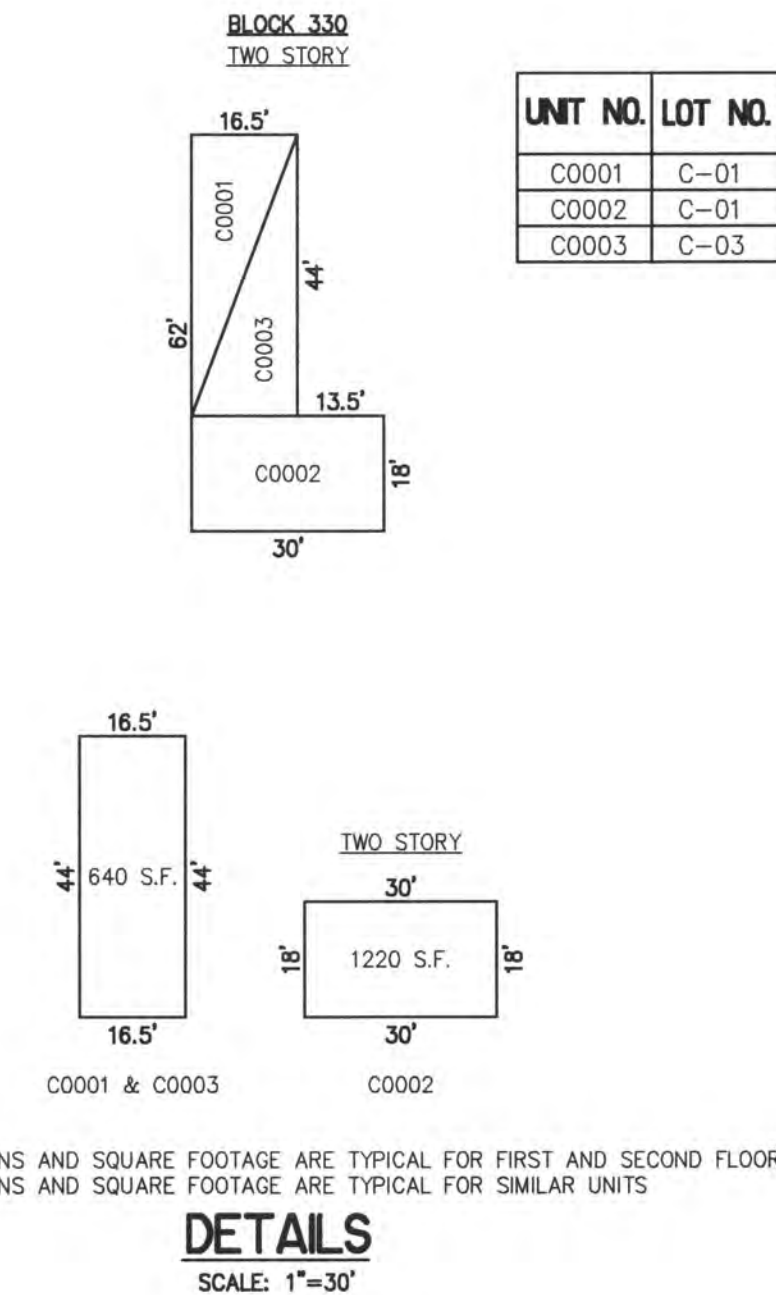


MONMOUTH AVENUE  
(50' R.O.W.)



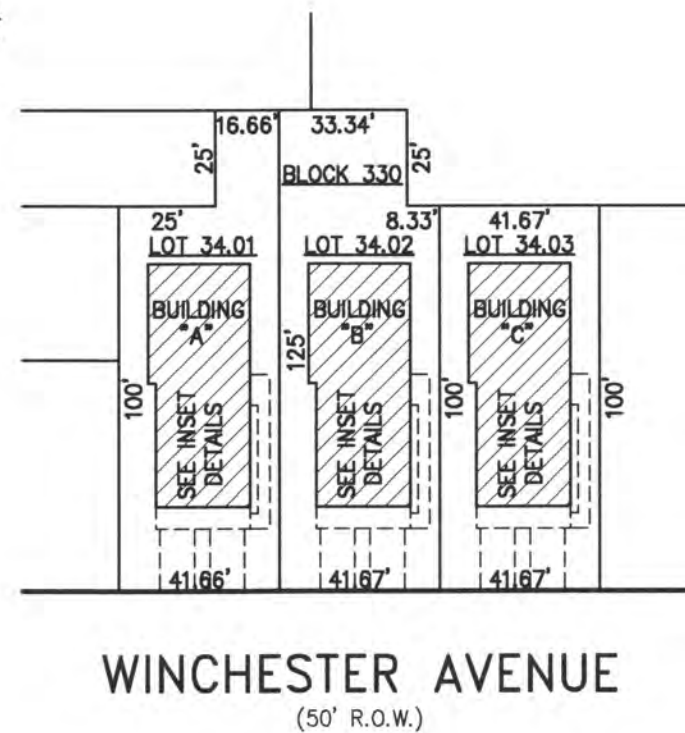
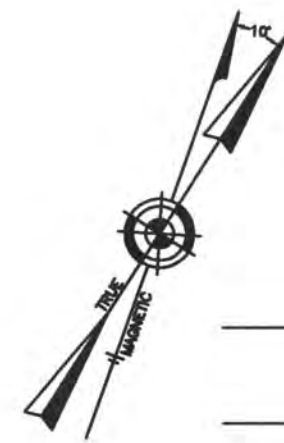
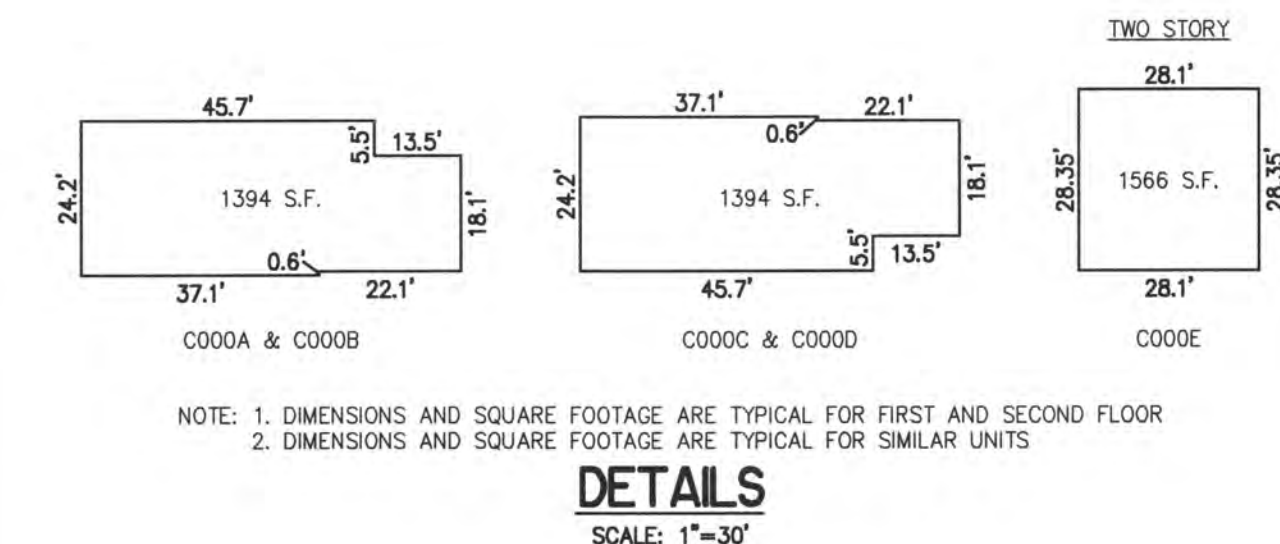
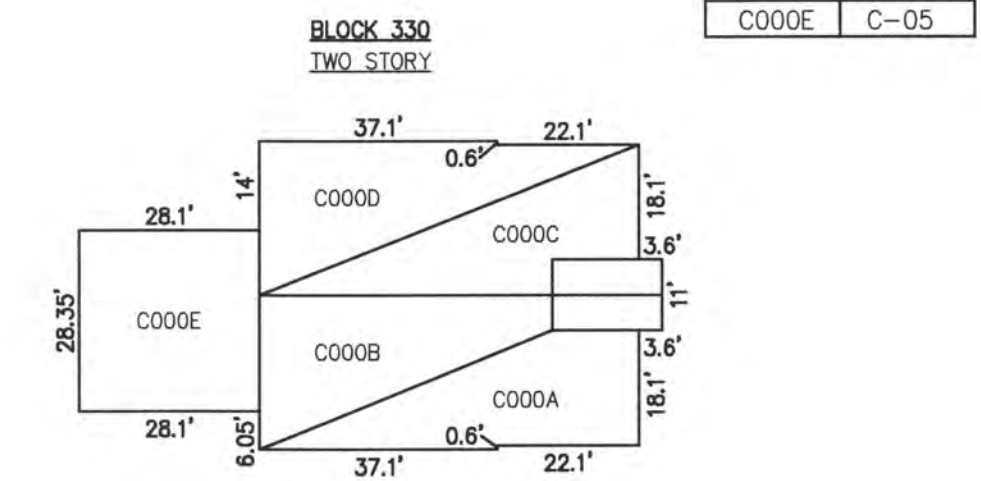
**PLAN**  
SCALE: 1"=50'

**BLOCK 330, LOT 35**  
**9610 MONMOUTH CONDOMINIUM**  
9610 MONMOUTH AVENUE  
INSET "XXX"



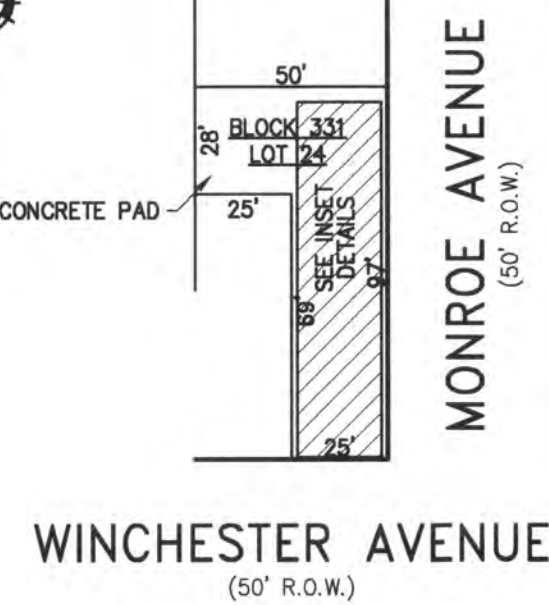
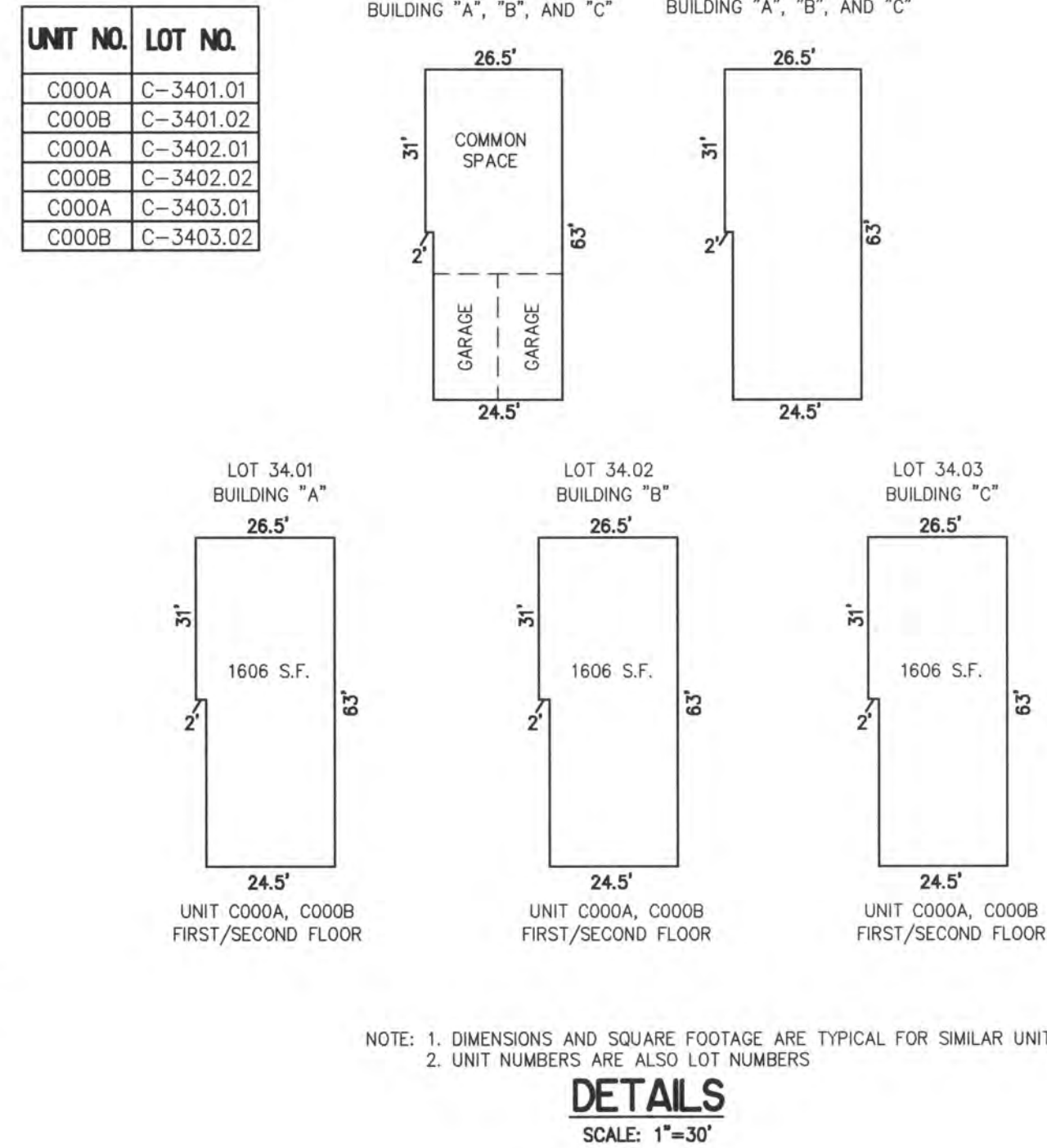
**PLAN**  
SCALE: 1"=50'

UNIT NO.	LOT NO.
C000A	C-01
C000B	C-02
C000C	C-03
C000D	C-04
C000E	C-05



**PLAN**  
SCALE: 1"=50'

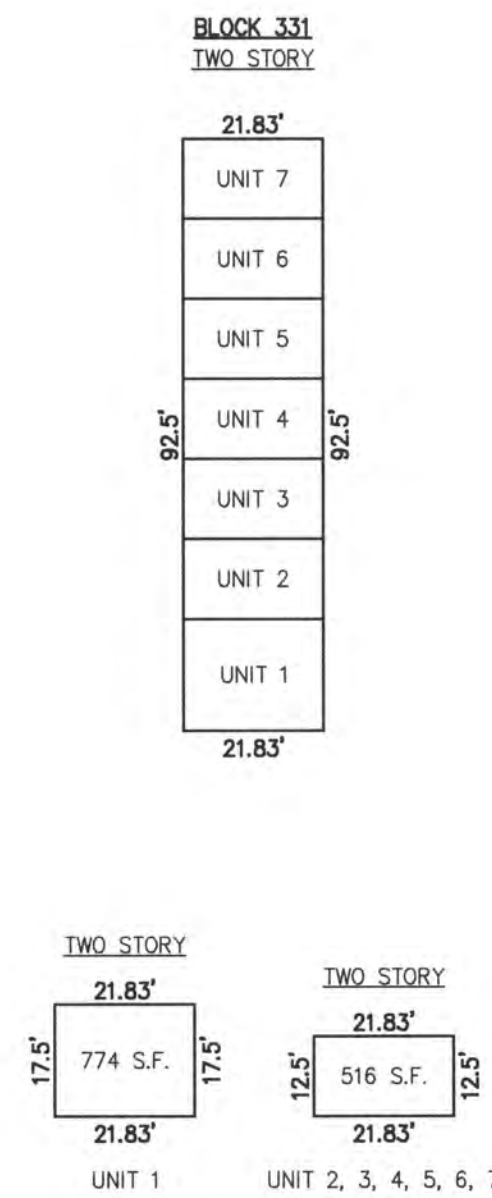
**BLOCK 330, LOT 34.01, 34.02, 34.03**  
**WINCHESTER I, II, III CONDOMINIUM**  
9611, 9609, & 9607 WINCHESTER AVENUE  
INSET "WWW"



**PLAN**  
SCALE: 1"=50'

**BLOCK 331, LOT 24**  
**CEDARS CONDOMINIUM**  
100 NORTH MONROE AVENUE  
INSET "ZZZ"

UNIT NO.	LOT NO.
UNIT 1	C-24.01
UNIT 2	C-24.02
UNIT 3	C-24.03
UNIT 4	C-24.04
UNIT 5	C-24.05
UNIT 6	C-24.06



CONDOMINIUM DETAILS AND DIMENSIONS  
BLOCK 330, LOT 32  
BLOCK 330, LOT 34.01, 34.02, 34.03  
BLOCK 330, LOT 35  
BLOCK 330, LOT 402  
BLOCK 331, LOT 24  
SEE PLATE 5

"THIS TAX MAP PLATE HAS BEEN DIGITALLY DRAWN USING COMPUTER-AIDED DRAFTING/DESIGN (CADD) & COORDINATE GEOMETRY (COGO). IT IS BASED ON THE ORIGINAL DIGITALLY DRAWN TAX MAP PLATE BEARING THE OFFICIAL NEW JERSEY DIVISION TAXATION APPROVAL STAMP WITH APPROVAL DATE 6-3-2005 SERIAL NUMBER 846 AND SIGNATURES OF SIGNERS' THOMAS J. REILLY, CHIEF, LOCAL PROPERTY, FIELD ASSISTANCE. SANTO C. DIDONATO, SUPERVISING FIELD REPRESENTATIVE. THE ORIGINAL DIGITALLY DRAWN TAX MAP PLATE WITH THE OFFICIAL APPROVAL STAMP IS ON FILE WITH REMINGTON, VERNICK & WALBERG ENGINEERS."

**TAX MAP**  
**CITY OF MARGATE**

ATLANTIC COUNTY NEW JERSEY  
SCALE: AS NOTED DATE: 1-30-2004

**CRAIG F. REMINGTON LAND SURVEYOR LIC. NO. 23924**

**REMINGTON, VERNICK & WALBERG ENGINEERS**  
24 GA 28048700  
845 N. MAIN STREET, PLEASANTVILLE, N.J. 08232  
(609) 645-780, FAX (609) 645-7076  
WEB SITE ADDRESS: WWW.RVE.COM