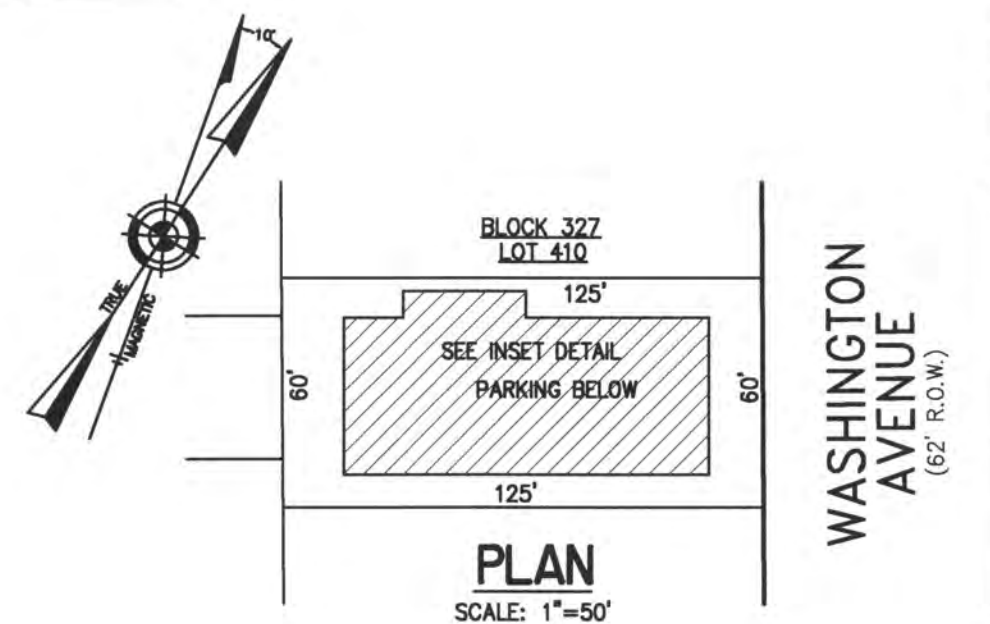
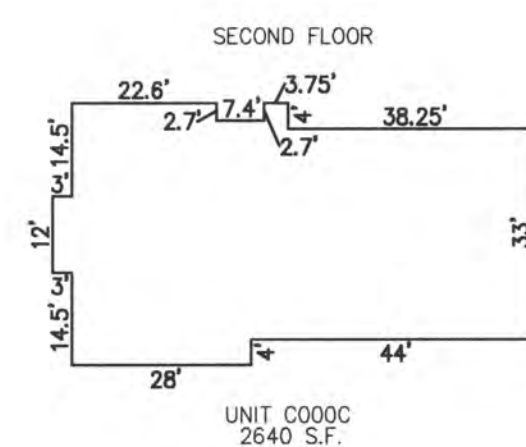
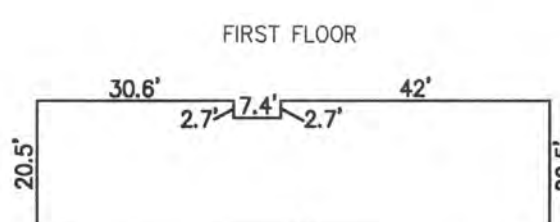
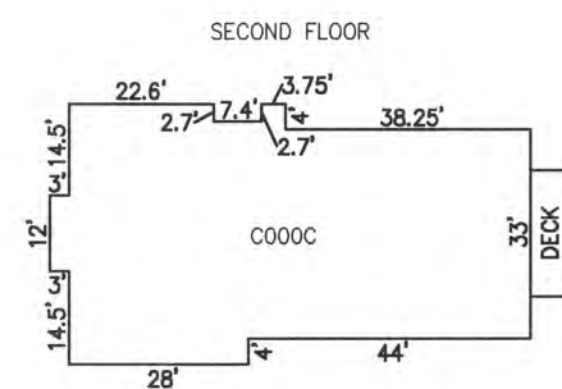
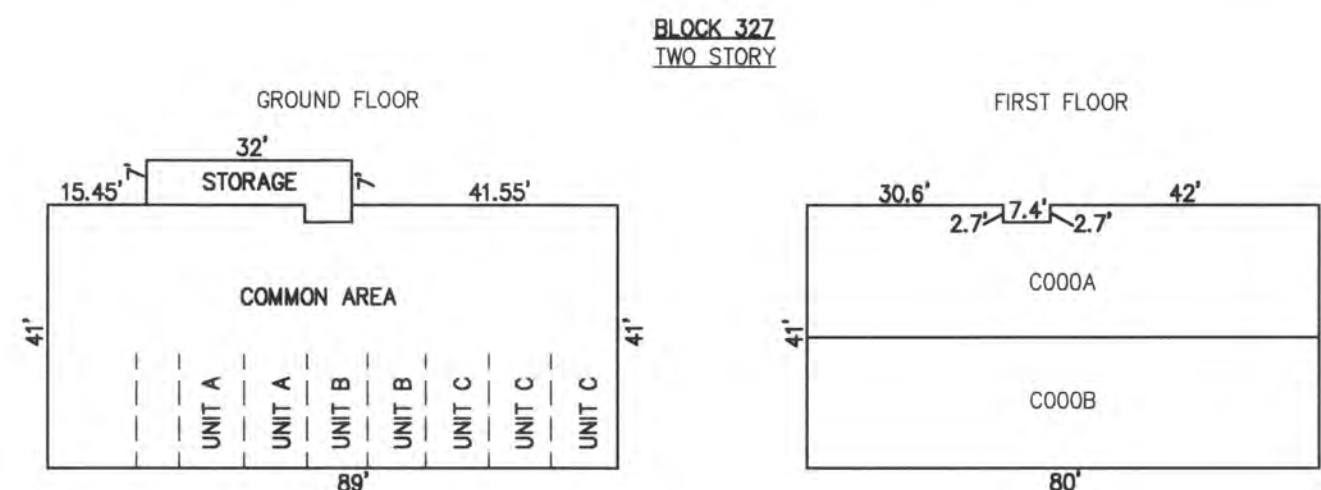


REVISIONS		
4-13-2007	CRAIG F. REMINGTON	23924
8-31-2009	CRAIG F. REMINGTON	23924



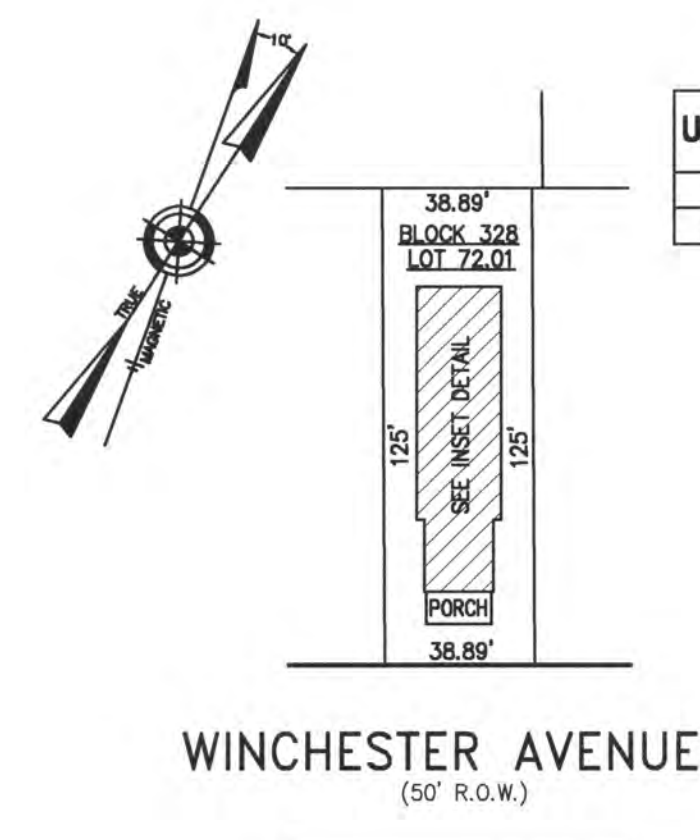
UNIT NO.	LOT NO.
C000A	C-01
C000B	C-02
C000C	C-03

BLOCK 327, LOT 410
114 NORTH WASHINGTON AVENUE CONDOMINIUM
114 NORTH WASHINGTON AVENUE
INSET "2H"



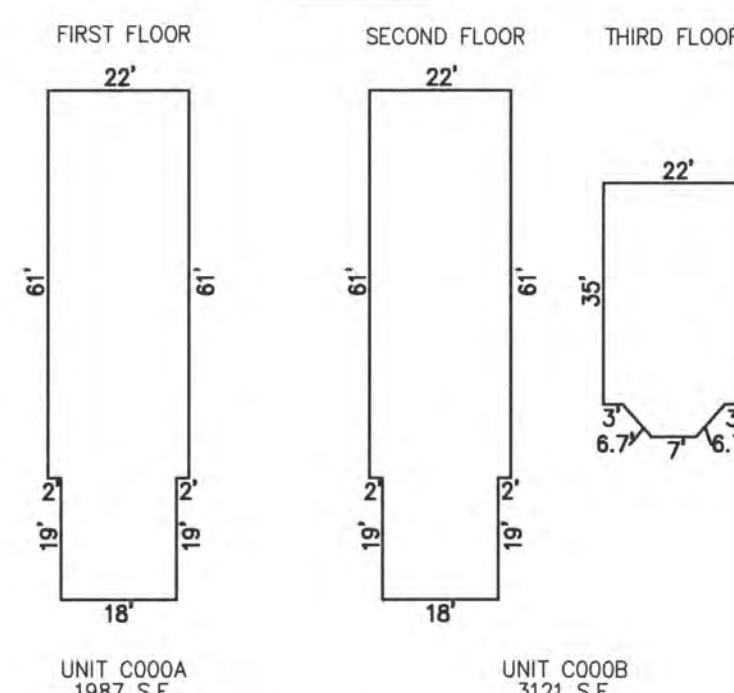
NOTE: 1. DIMENSIONS AND SQUARE FOOTAGE ARE TYPICAL FOR SIMILAR UNITS

DETAILS
 SCALE: 1"=30'



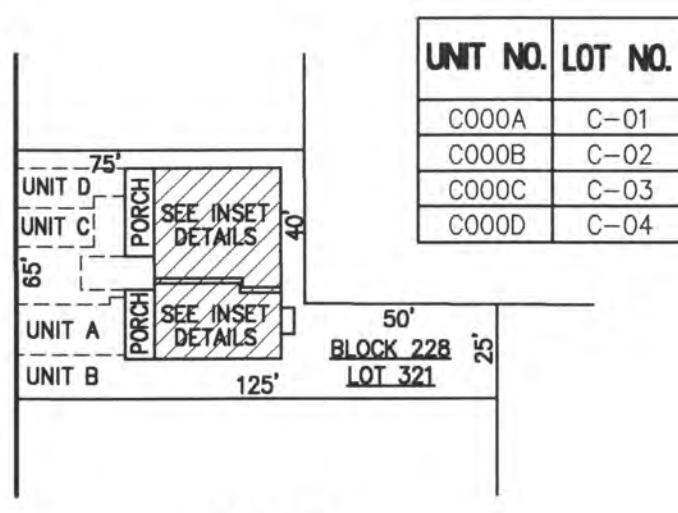
UNIT NO.	LOT NO.
C000A	C-01
C000B	C-02

PLAN
 SCALE: 1"=50'



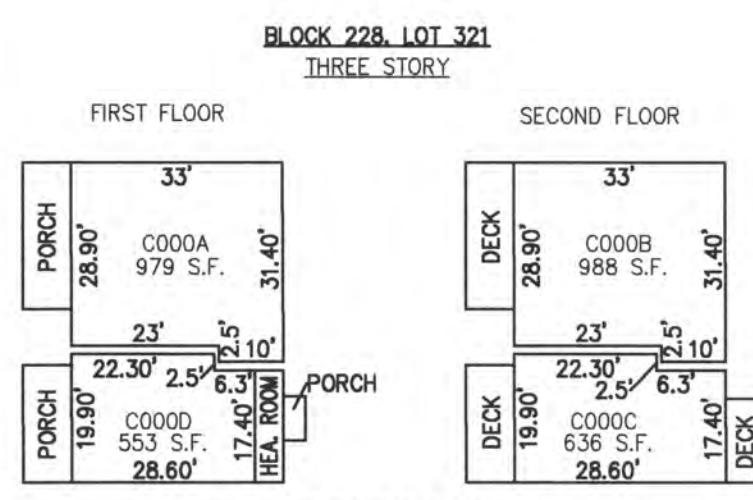
DETAILS
 SCALE: 1"=30'

BLOCK 328, LOT 72.01
9413 WINCHESTER AVENUE CONDOMINIUM
9413 WINCHESTER AVENUE
INSET "2J"

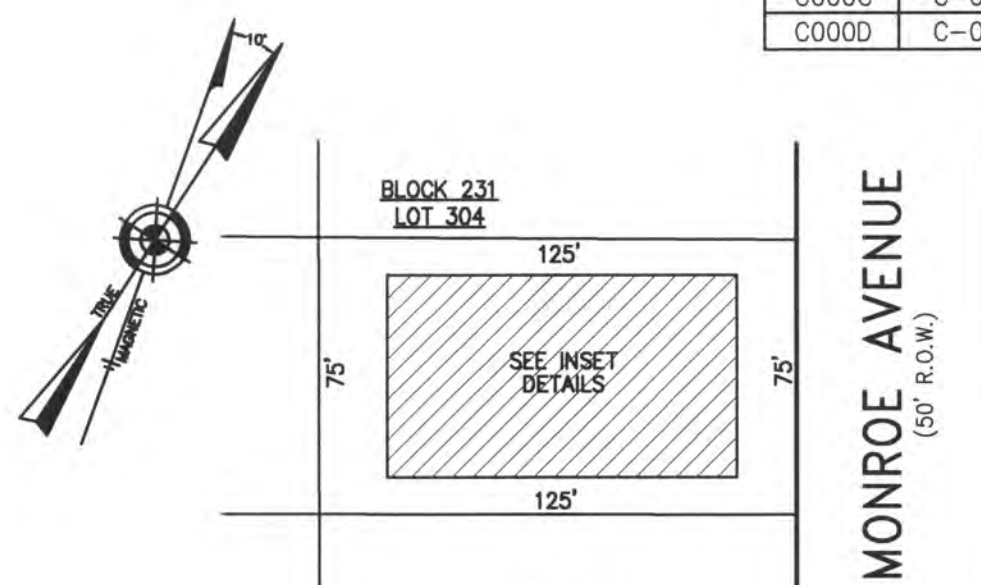


PLAN
 SCALE: 1"=50'

BLOCK 228, LOT 321
25 NORTH JEFFERSON AVENUE CONDOMINIUM
25 NORTH JEFFERSON AVENUE
INSET "3A"

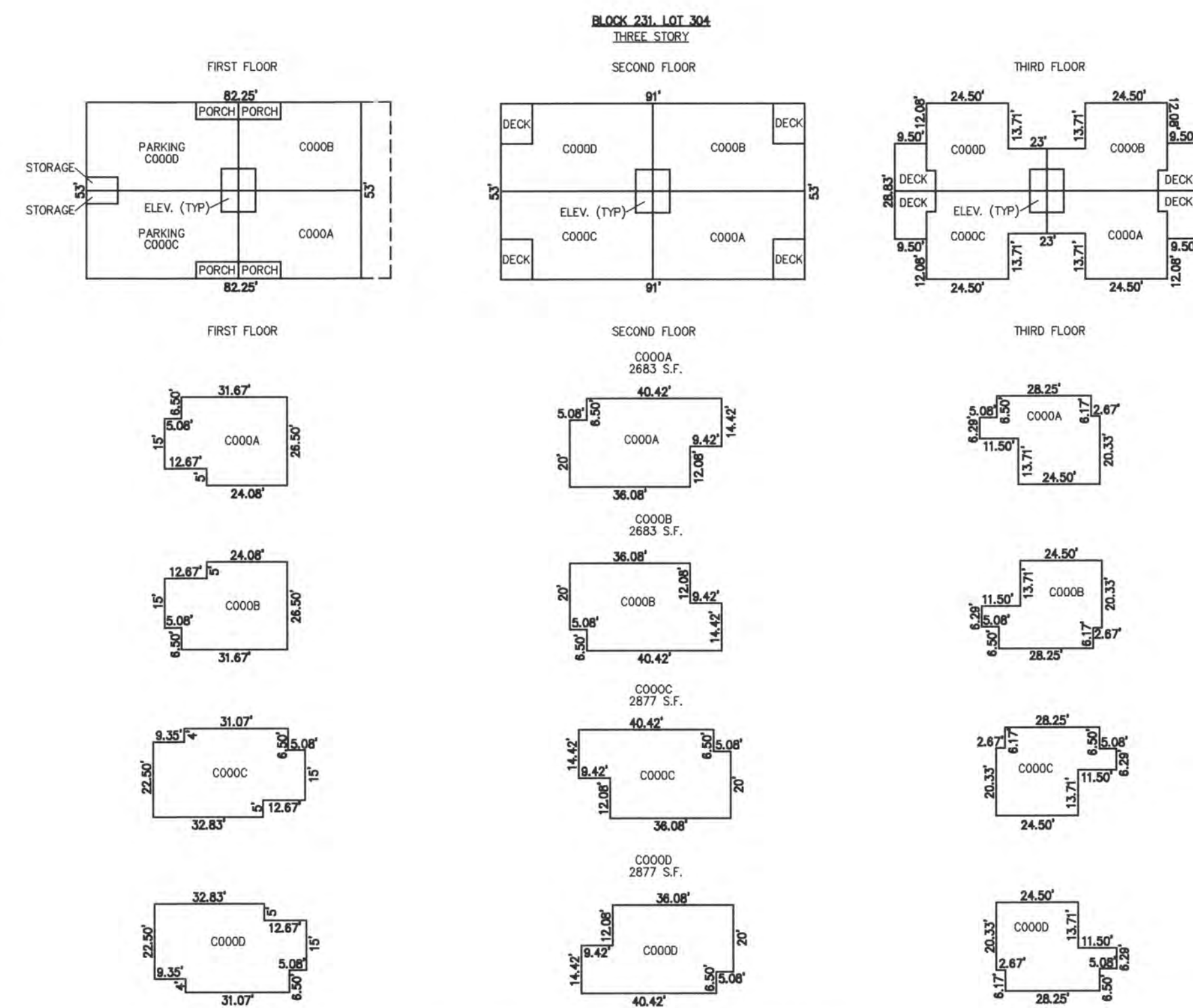


DETAILS
 SCALE: 1"=30'



UNIT NO.	LOT NO.
C000A	C-01
C000B	C-02
C000C	C-03
C000D	C-04

PLAN
 SCALE: 1"=50'



NOTE: 1. DIMENSIONS AND SQUARE FOOTAGE ARE TYPICAL FOR SIMILAR UNITS

DETAILS
 SCALE: 1"=30'

BLOCK 231, LOT 304
4 NORTH MONROE AVENUE CONDOMINIUM
4 NORTH MONROE AVENUE
INSET "3B"

"THIS TAX MAP PLATE HAS BEEN DIGITALLY DRAWN USING COMPUTER-AIDED DRAFTING/DESIGN (CADD) & COORDINATE GEOMETRY (COGO). IT IS BASED ON THE ORIGINAL DIGITALLY DRAWN TAX MAP PLATE BEARING THE OFFICIAL NEW JERSEY DIVISION TAXATION APPROVAL STAMP WITH APPROVAL DATE 6-3-2005 SERIAL NUMBER 846 AND SIGNATURES OF SIGNERS' THOMAS J. REILLY, CHIEF, LOCAL PROPERTY, FIELD ASSISTANCE, SANTO C. DIDONATO, SUPERVISING FIELD REPRESENTATIVE. THE ORIGINAL DIGITALLY DRAWN TAX MAP PLATE WITH THE OFFICIAL APPROVAL STAMP IS ON FILE WITH REMINGTON, VERNICK & WALBERG ENGINEERS."

CONDOMINIUM DETAILS AND DIMENSIONS
 BLOCK 228, LOT 321
 BLOCK 231, LOT 304
 BLOCK 327, LOT 410
 BLOCK 328, LOT 72.01
 SEE PLATE 5

TAX MAP
CITY OF MARGATE

ATLANTIC COUNTY NEW JERSEY
 SCALE: AS NOTED DATE: 1-30-2004

CRAIG F. REMINGTON LAND SURVEYOR LIC. NO. 23924



REMINGTON, VERNICK & WALBERG ENGINEERS
 24 CA 28048700
 845 N MAIN STREET, PLEASANTVILLE, NJ 08232
 (609) 645-7100, FAX (609) 645-7076
 WEB SITE ADDRESS: WWW.RVE.COM