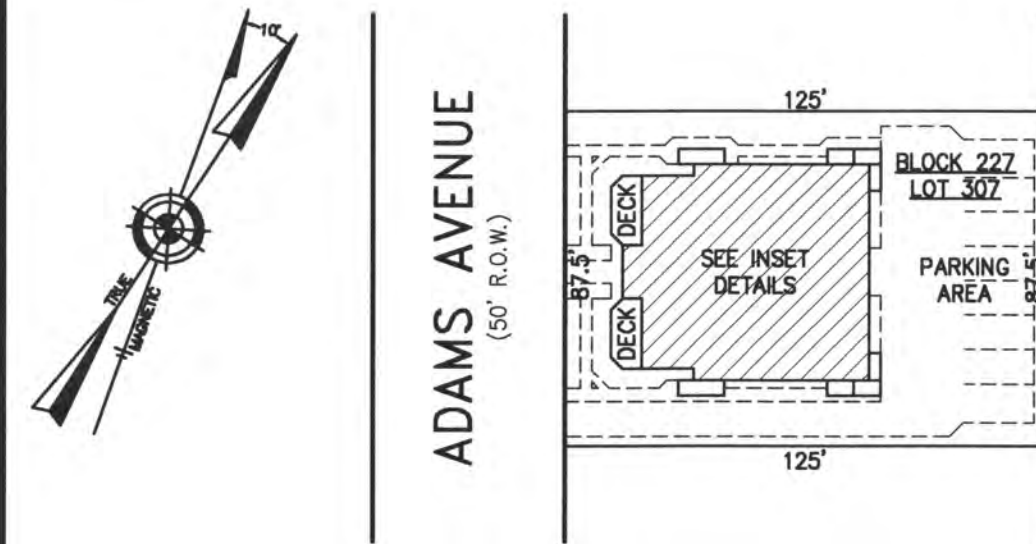
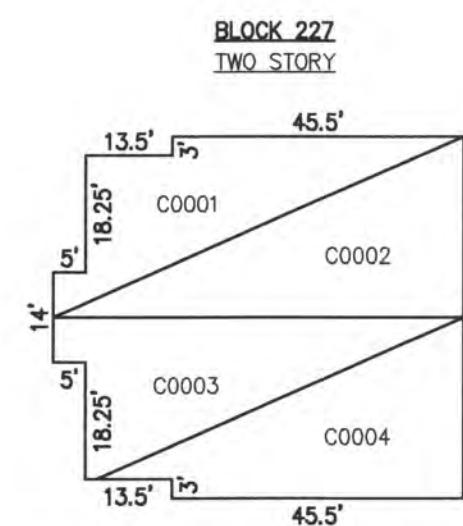


REVISIONS		
1-30-2017	CHARLES E. ADAMSON	42827

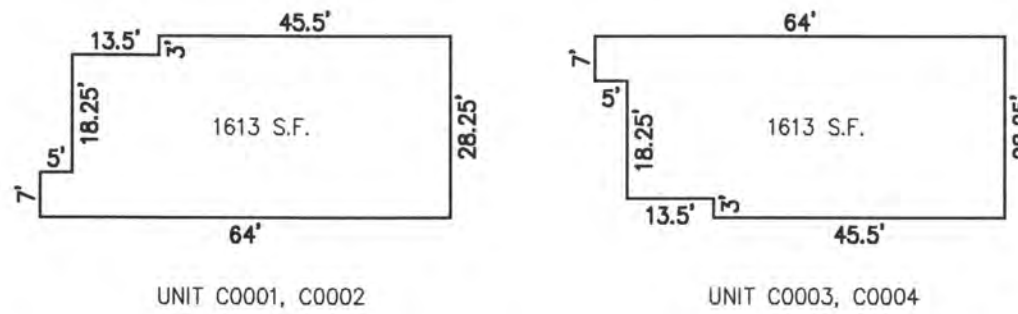


PLAN  
SCALE: 1"=50'

UNIT NO.	LOT NO.
C0001	C-01
C0002	C-02
C0003	C-03
C0004	C-04



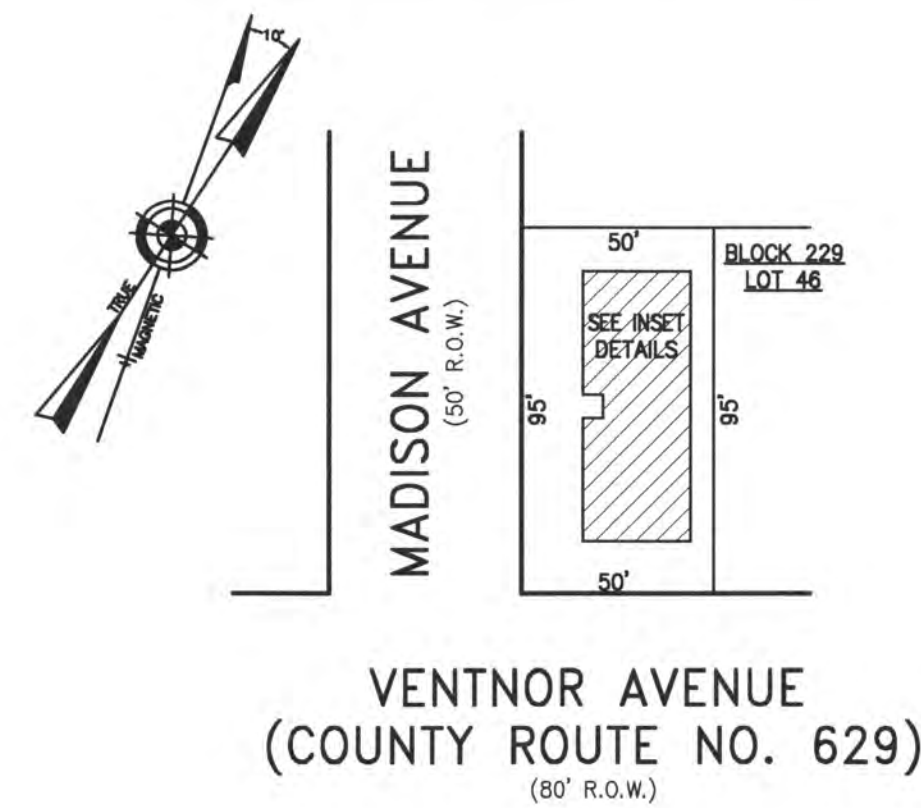
NOTE: UNIT NUMBERS ARE ALSO LOT NUMBERS



NOTE: 1. DIMENSIONS AND SQUARE FOOTAGE ARE TYPICAL FOR FIRST AND SECOND FLOOR  
2. DIMENSIONS AND SQUARE FOOTAGE ARE TYPICAL FOR SIMILAR UNITS

DETAILS  
SCALE: 1"=30'

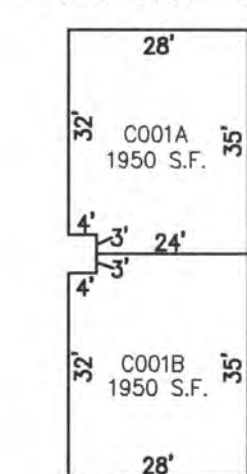
**BLOCK 227, LOT 307**  
**NORTH ADAMS AVENUE CONDOMINIUM**  
**9 NORTH ADAMS AVENUE**  
**INSET "XX"**



PLAN  
SCALE: 1"=50'

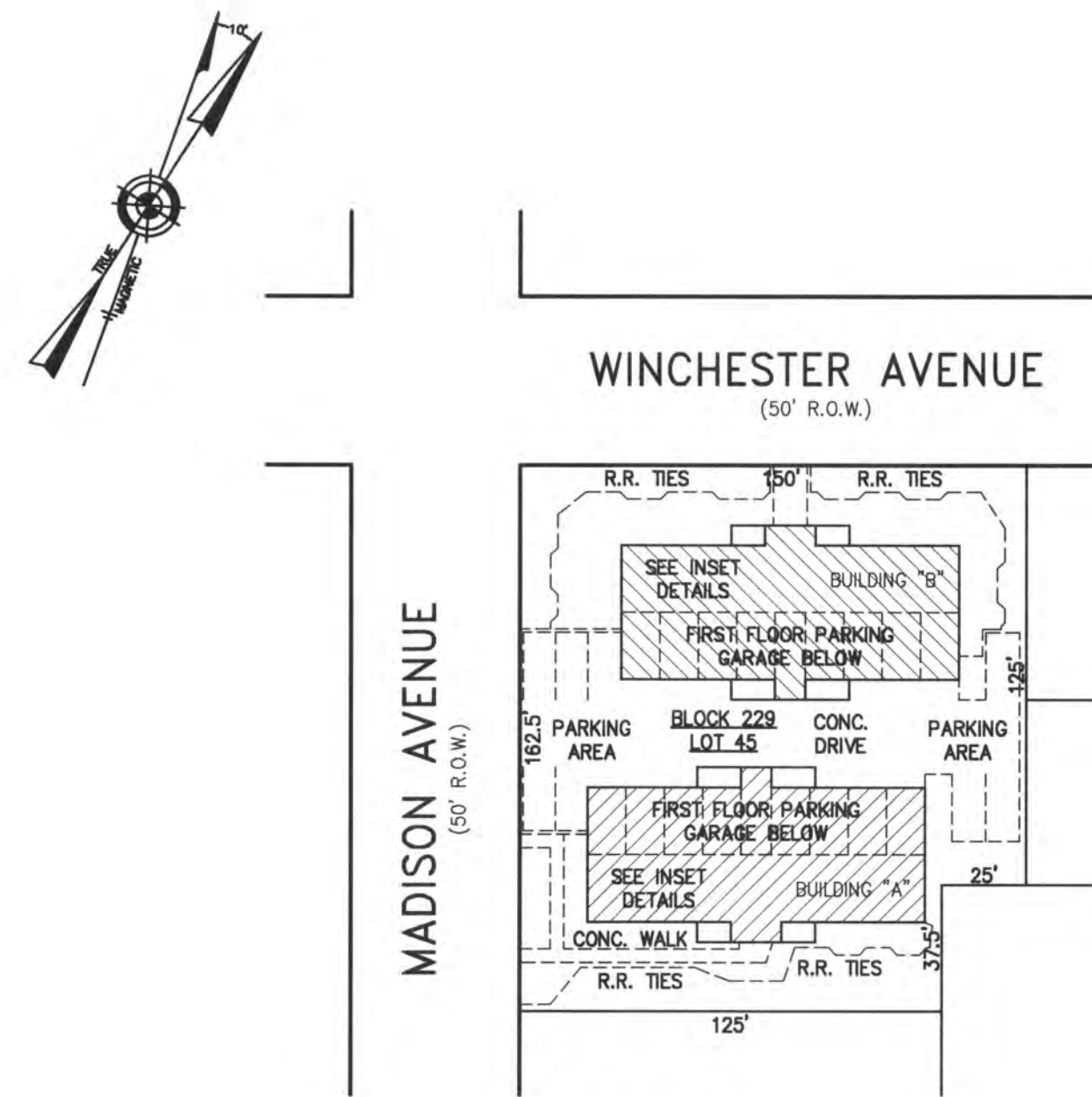
**BLOCK 229, LOT 46**  
**I NORTH MADISON AVENUE CONDOMINIUM**  
**I NORTH MADISON AVENUE**  
**INSET "ZZ"**

BLOCK 229, LOT 46  
TWO STORY  
FIRST & SECOND FLOORS



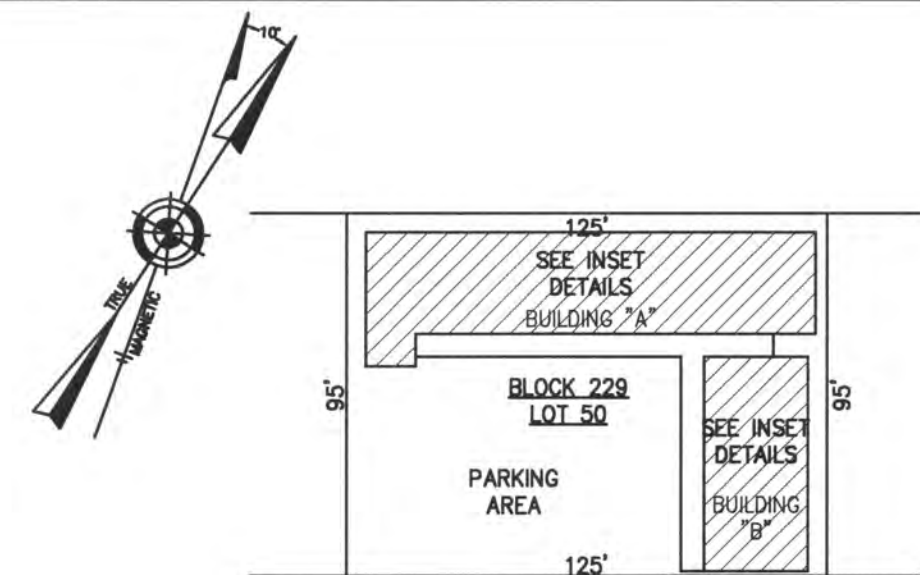
DETAILS  
SCALE: 1"=30'

UNIT NO.	LOT NO.
C001A	C-01.01
C001B	C-01.02



PLAN  
SCALE: 1"=50'

**BLOCK 229, LOT 45**  
**MADISON HOUSE CONDOMINIUM**  
**25 NORTH MADISON AVENUE**  
**INSET "YY"**

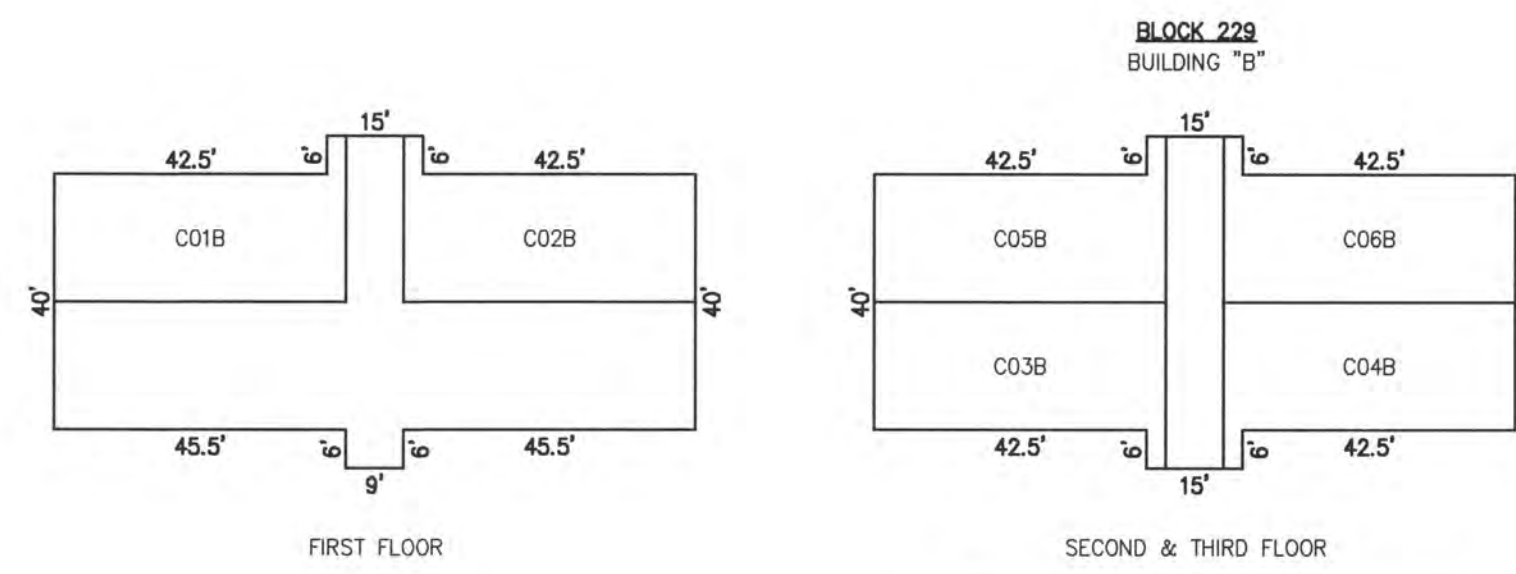
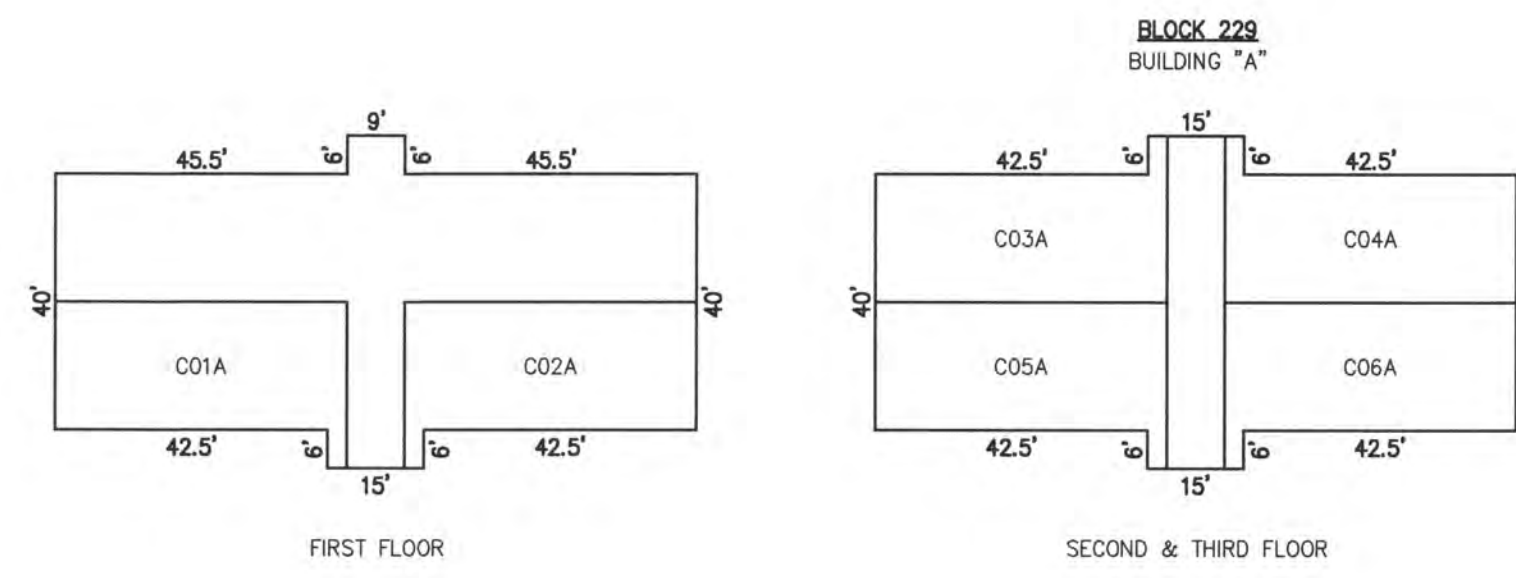


PLAN  
SCALE: 1"=50'

**BLOCK 229, LOT 50**  
**CASABLANCA CONDOMINIUM**  
**9505 VENTNOR AVENUE**  
**INSET "AAA"**

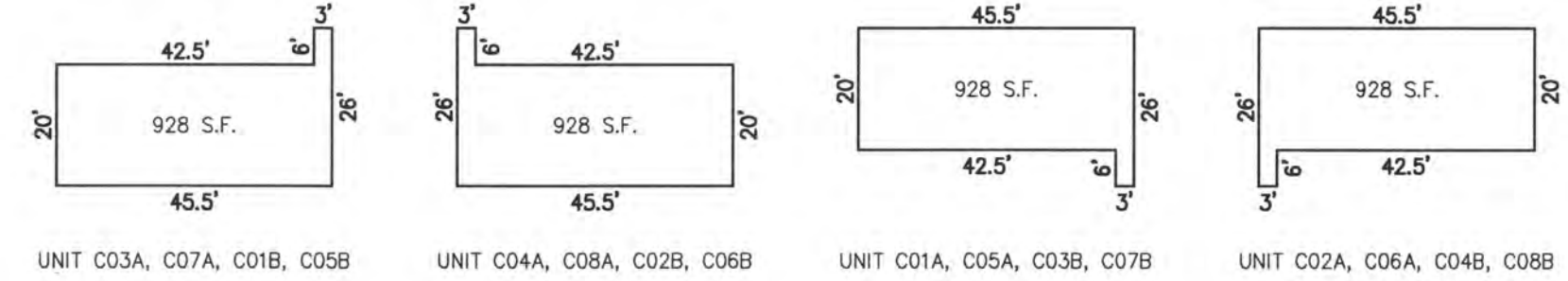
**CONDOMINIUM DETAILS AND DIMENSIONS**  
BLOCK 227, LOT 307  
BLOCK 229, LOT 45  
BLOCK 229, LOT 46  
BLOCK 229, LOT 50  
SEE PLATE 5

UNIT NO.	LOT NO.
C01A	C-1.01
C01B	C-1.02
C02A	C-2.01
C02B	C-2.02
C03A	C-3.01
C03B	C-3.02
C04A	C-4.01
C04B	C-4.02
C05A	C-5.01
C05B	C-5.02
C06A	C-6.01
C06B	C-6.02
C07A	C-7.01
C07B	C-7.02
C08A	C-8.01
C08B	C-8.02



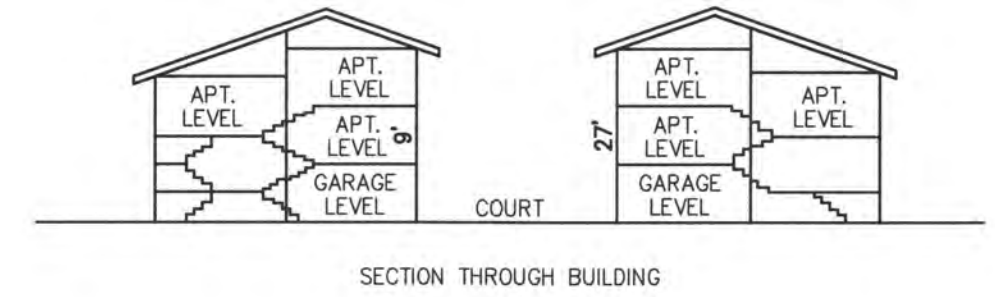
NOTE: UNIT NUMBERS ARE ALSO LOT NUMBERS

DETAILS  
SCALE: 1"=30'

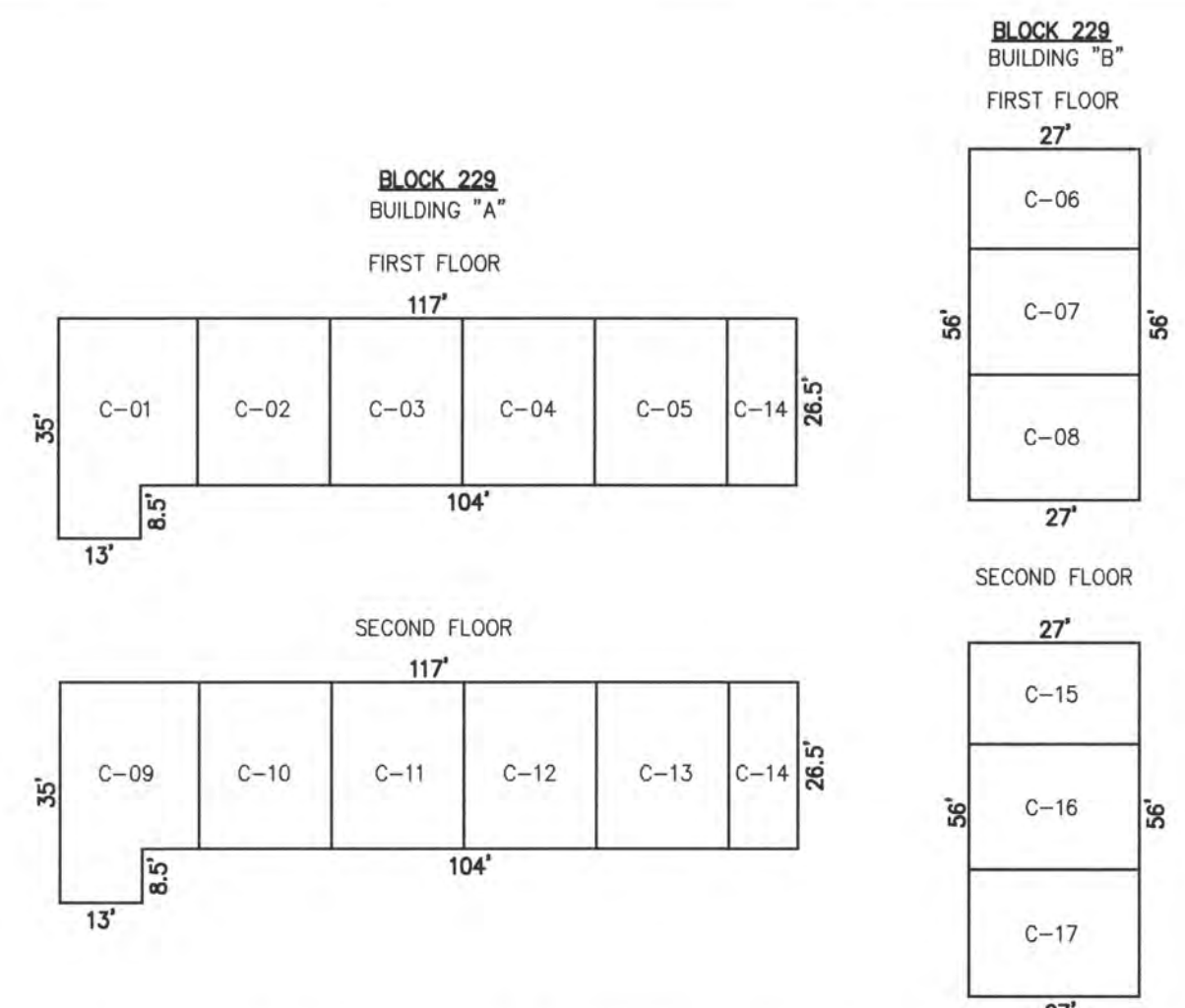


NOTE: 1. DIMENSIONS AND SQUARE FOOTAGE ARE TYPICAL FOR ALL FLOORS  
2. DIMENSIONS AND SQUARE FOOTAGE ARE TYPICAL FOR SIMILAR UNITS

DETAILS  
SCALE: 1"=30'

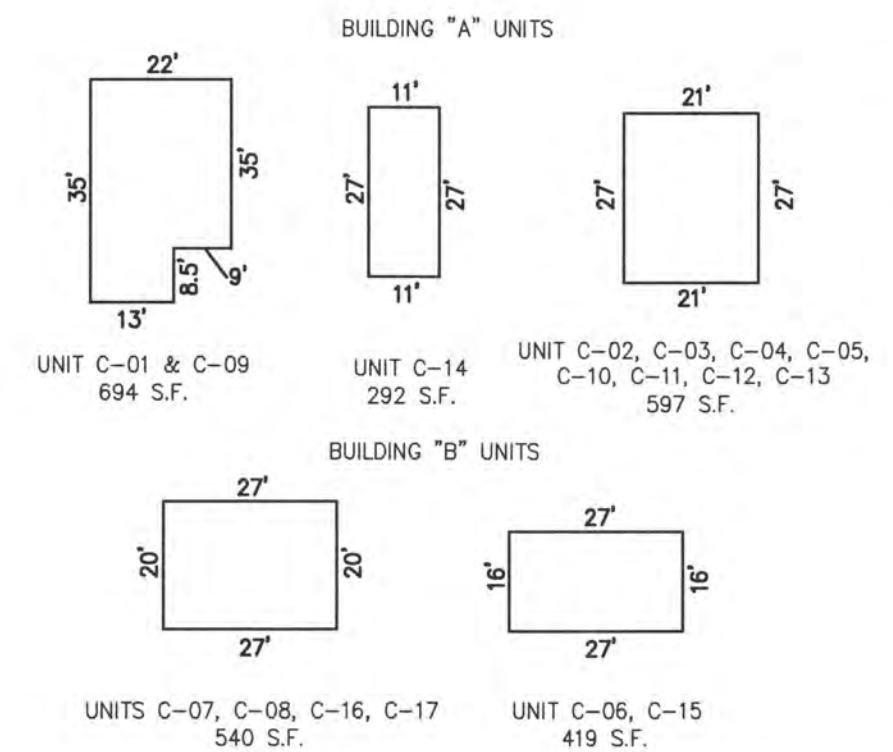


SECTION THROUGH BUILDING



NOTE: DIMENSIONS AND SQUARE FOOTAGE ARE TYPICAL FOR ALL FLOORS

DETAILS  
SCALE: 1"=30'



DETAILS  
SCALE: 1"=30'

UNIT NO.	LOT NO.
C-01	C-50.01
C-02	C-50.02
C-03	C-50.03
C-04	C-50.04
C-05	C-50.05
C-06	C-50.06
C-07	C-50.07
C-08	C-50.08
C-09	C-50.09
C-10	C-50.10
C-11	C-50.11
C-12	C-50.12
C-13	C-50.13
C-14	C-50.14
C-15	C-50.15
C-16	C-50.16
C-17	C-50.17
C-18	C-50.18
C-19	C-50.19
C-20	C-50.20

"THIS TAX MAP PLATE HAS BEEN DIGITALLY DRAWN USING COMPUTER-AIDED DRAFTING/DESIGN (CADD) & COORDINATE GEOMETRY (COGO). IT IS BASED ON THE ORIGINAL DIGITALLY DRAWN TAX MAP PLATE BEARING THE OFFICIAL NEW JERSEY DIVISION TAXATION APPROVAL STAMP WITH APPROVAL DATE 6-3-2005 SERIAL NUMBER 846 AND SIGNATURES OF SIGNERS THOMAS J. REILLY, CHIEF, LOCAL PROPERTY, FIELD ASSISTANCE. SANTO C. DIDONATO, SUPERVISING FIELD REPRESENTATIVE. THE ORIGINAL DIGITALLY DRAWN TAX MAP PLATE WITH THE OFFICIAL APPROVAL STAMP IS ON FILE WITH REMINGTON, VERNICK & WALBERG ENGINEERS."

**TAX MAP**  
**CITY OF MARGATE**  
ATLANTIC COUNTY NEW JERSEY

SCALE: AS NOTED DATE: 1-30-2004

**CRAIG F. REMINGTON LAND SURVEYOR LIC. NO. 23924**



**REMINGTON, VERNICK & WALBERG ENGINEERS**  
24 GA 28048700  
845 N MAIN STREET, PLEASANTVILLE, NJ 08232  
(609) 645-780, FAX (609) 645-7076  
WEB SITE ADDRESS WWW.RVW.COM