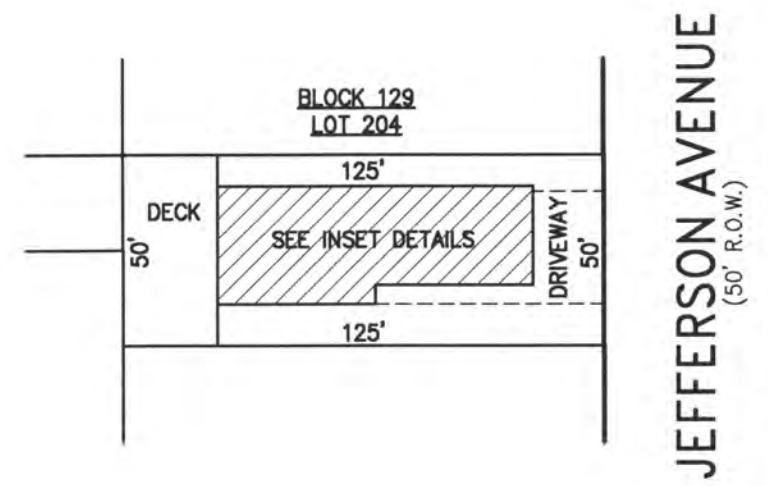
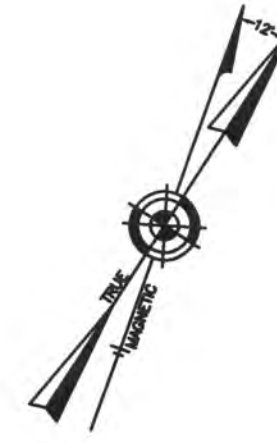
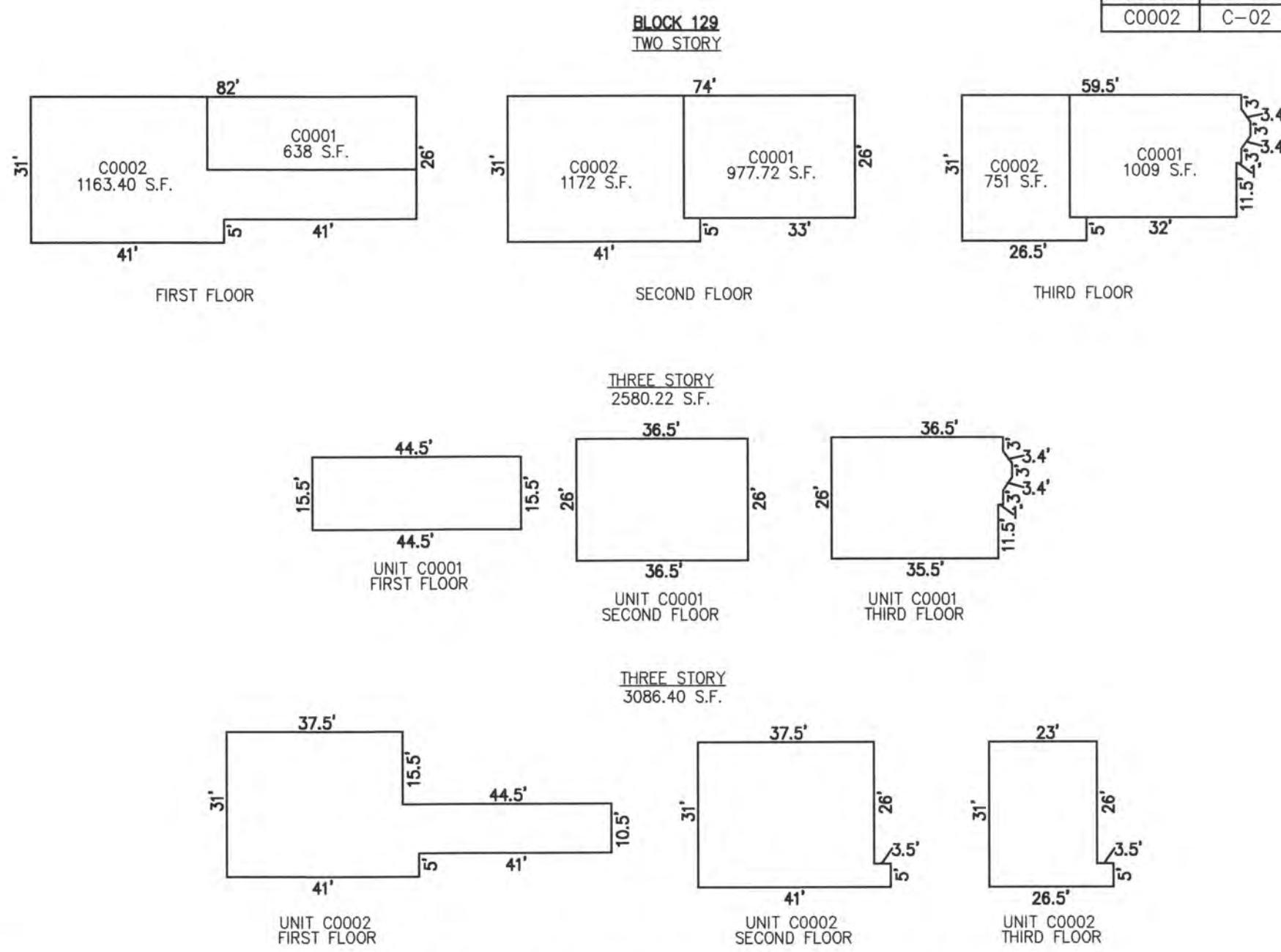


REVISIONS		
4-13-2007	CRAIG F. REMINGTON	23924



**PLAN**  
SCALE: 1"=50'

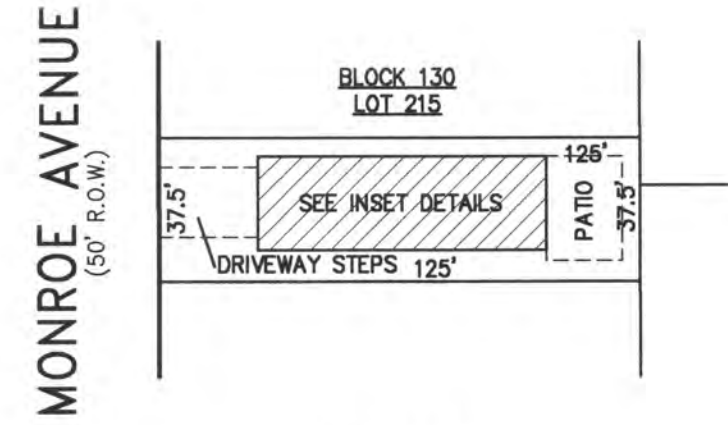
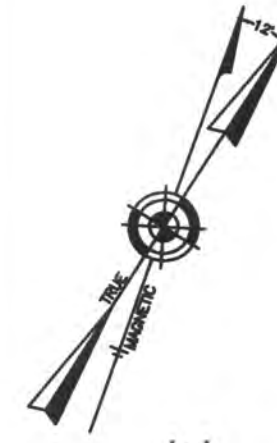
UNIT NO.	LOT NO.
C0001	C-01
C0002	C-02



NOTE: DIMENSIONS AND SQUARE FOOTAGE ARE TYPICAL FOR SIMILAR UNITS

**DETAILS**  
SCALE: 1"=30'

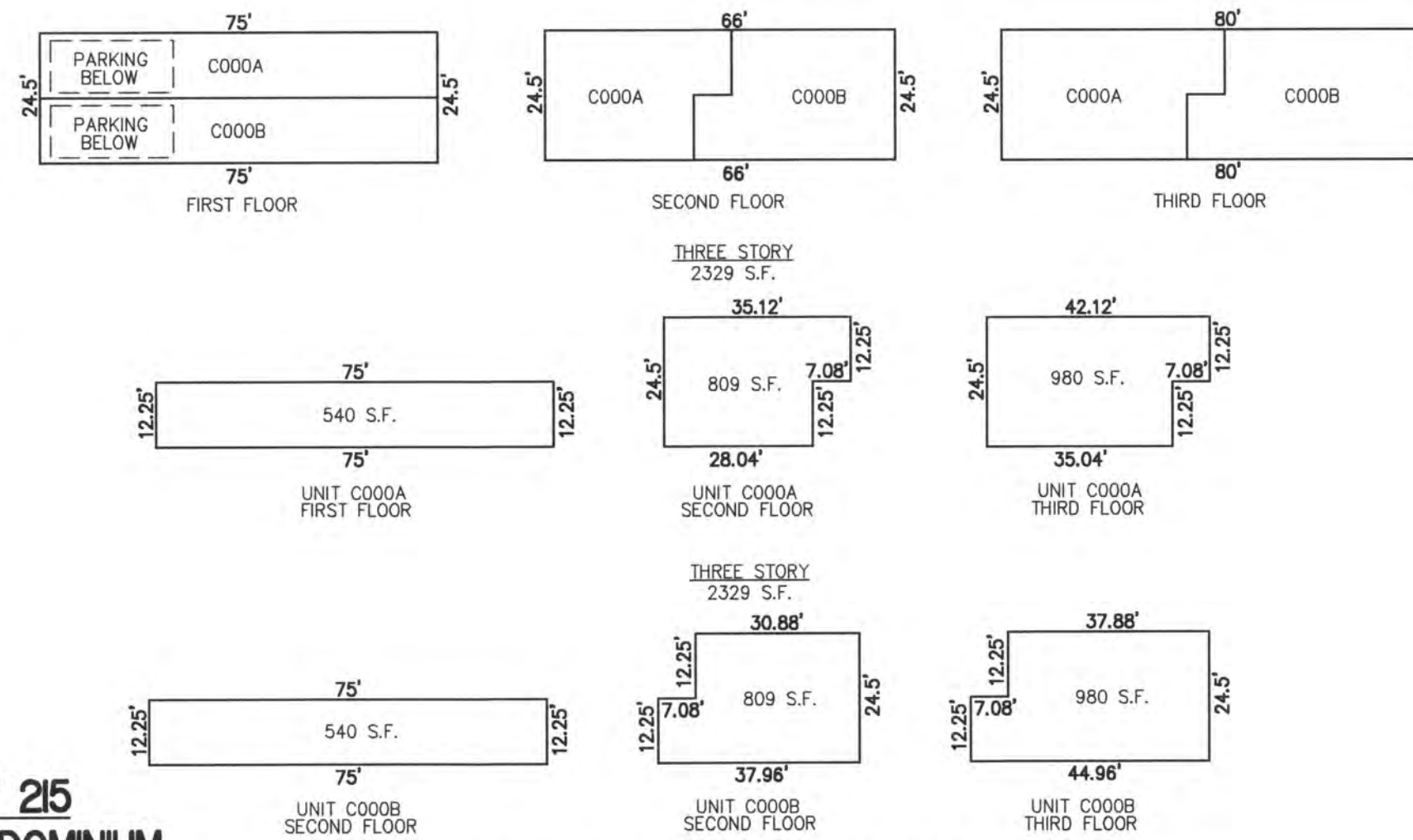
**BLOCK 129, LOT 204**  
**20-22 SOUTH JEFFERSON AVENUE CONDOMINIUM**  
20-22 SOUTH JEFFERSON AVENUE  
**INSET 'I J'**



**PLAN**  
SCALE: 1"=50'

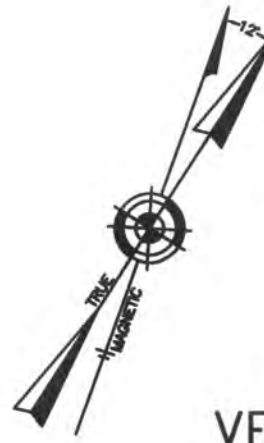
**BLOCK 130, LOT 215**  
**MONROE SOUTH CONDOMINIUM**  
7 SOUTH MONROE AVENUE  
**INSET 'I K'**

UNIT NO.	LOT NO.
C0001	C-01
C0002	C-02

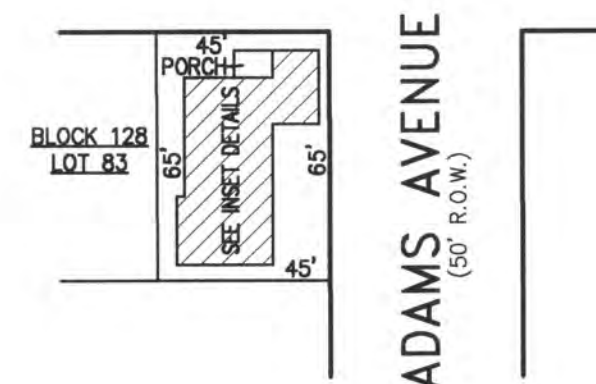


NOTE: DIMENSIONS AND SQUARE FOOTAGE ARE TYPICAL FOR SIMILAR UNITS

**DETAILS**  
SCALE: 1"=30'

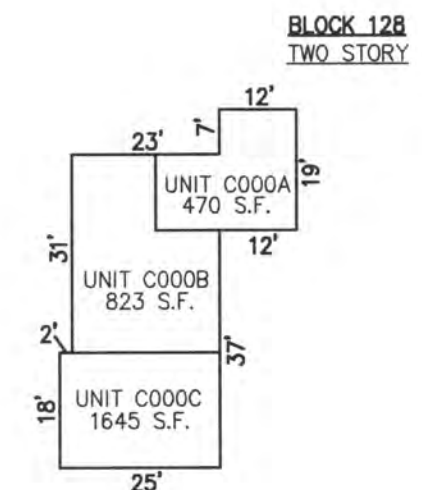


**VENTNOR AVENUE (COUNTY ROUTE NO. 629)**  
(80' R.O.W.)



**PLAN**  
SCALE: 1"=50'

UNIT NO.	LOT NO.
C000A	C-01
C000B	C-02
C000C	C-03



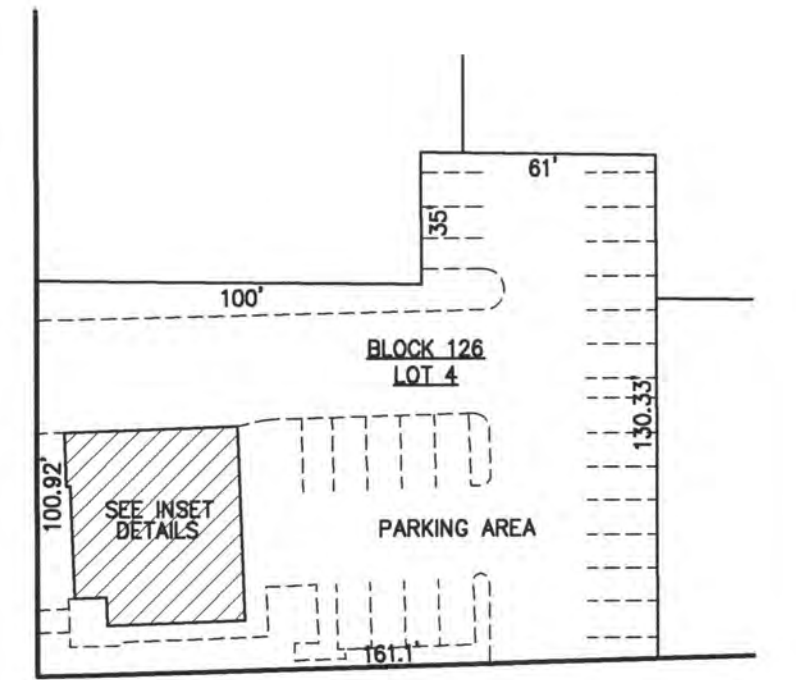
**DETAILS**  
SCALE: 1"=30'

**BLOCK 128, LOT 83**  
**9400 VENTNOR AVENUE CONDOMINIUM**  
9400 VENTNOR AVENUE  
**INSET 'I L'**



**PACIFIC AVENUE**  
(50' R.O.W.)

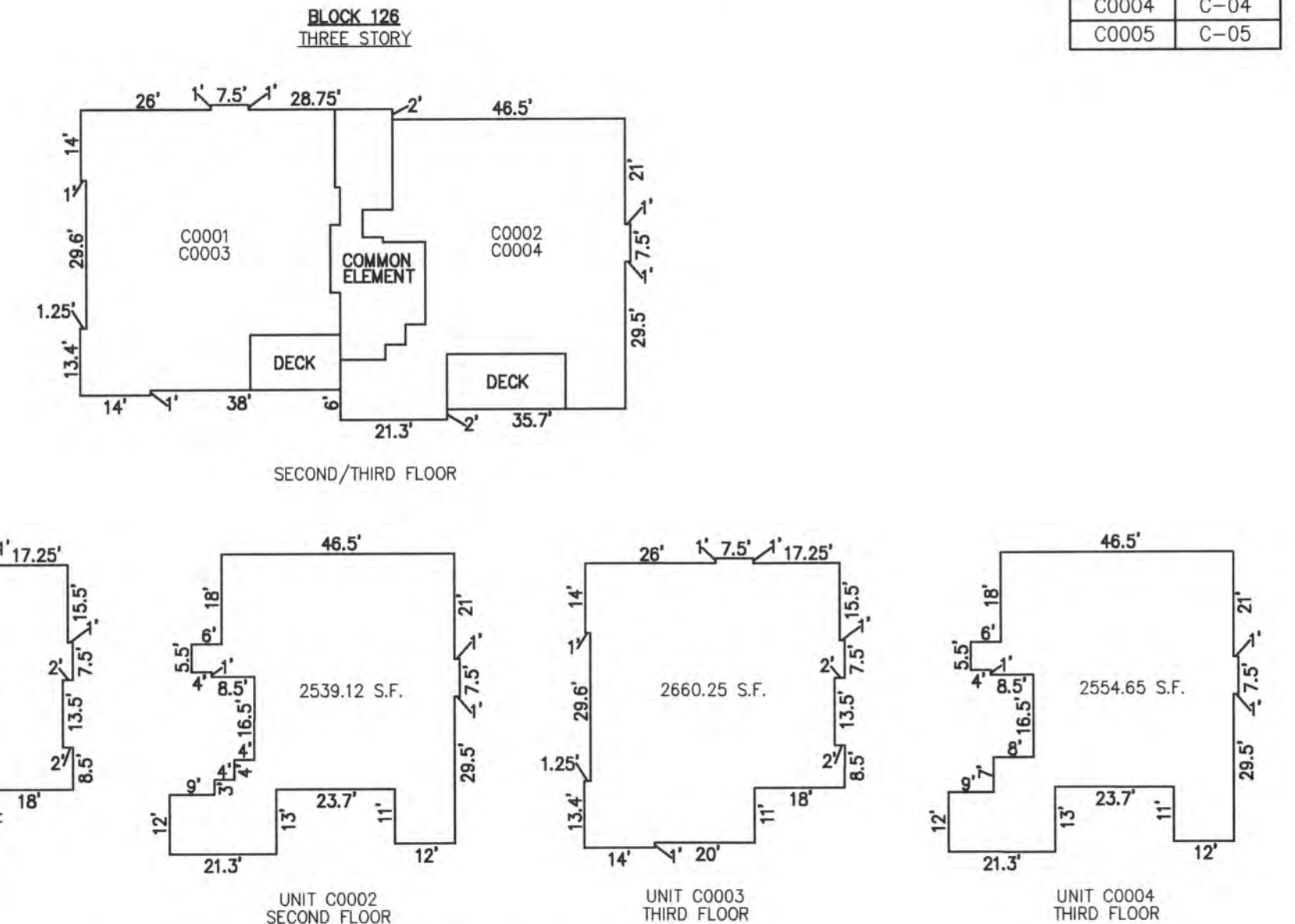
**WASHINGTON AVENUE**  
(62' R.O.W.)



**ATLANTIC AVENUE**  
(100' R.O.W.)

**PLAN**  
SCALE: 1"=50'

UNIT NO.	LOT NO.
C0001	C-01
C0002	C-02
C0003	C-03
C0004	C-04
C0005	C-05



NOTE: DIMENSIONS AND SQUARE FOOTAGE ARE TYPICAL FOR SIMILAR UNITS

**DETAILS**  
SCALE: 1"=30'

**CONDOMINIUM DETAILS AND DIMENSIONS**  
**BLOCK 129, LOT 204**  
**BLOCK 130, LOT 215**  
**BLOCK 128, LOT 83**  
**BLOCK 126, LOT 4**  
**SEE PLATE 4**

**BLOCK 126, LOT 4**  
**9219 ATLANTIC AVENUE CONDOMINIUM**  
9219 ATLANTIC AVENUE  
**INSET 'I M'**

THIS TAX MAP PLATE HAS BEEN DIGITALLY DRAWN USING COMPUTER-AIDED DRAFTING/DESIGN (CAD) & COORDINATE GEOMETRY (COGO). IT IS BASED ON THE ORIGINAL DIGITALLY DRAWN TAX MAP PLATE BEARING THE OFFICIAL NEW JERSEY DIVISION TAXATION APPROVAL STAMP WITH APPROVAL DATE 6-3-2005 SERIAL NUMBER 846 AND SIGNATURES OF SIGNERS' THOMAS J. REILLY, CHIEF, LOCAL PROPERTY, FIELD ASSISTANCE, SANTO C. DIDONATO, SUPERVISING FIELD REPRESENTATIVE. THIS TAX MAP PLATE HAS BEEN DIGITALLY UPDATED TO REFLECT CONDITIONS AS OF 4-13-2007. THE ORIGINAL DIGITALLY DRAWN TAX MAP PLATE WITH THE OFFICIAL APPROVAL STAMP IS ON FILE WITH REMINGTON, VERNICK & WALBERG ENGINEERS."

**TAX MAP**  
**CITY OF MARGATE**

ATLANTIC COUNTY NEW JERSEY  
SCALE: AS NOTED DATE: 1-30-2004

**CRAIG F. REMINGTON LAND SURVEYOR LIC. NO. 23924**

**REMINGTON, VERNICK & WALBERG ENGINEERS**  
24 GA 28048700  
845 N. MAIN STREET, PLEASANTVILLE, NJ 08232  
(609) 645-710, FAX (609) 645-7076  
WEB SITE ADDRESS: WWW.RVW.COM