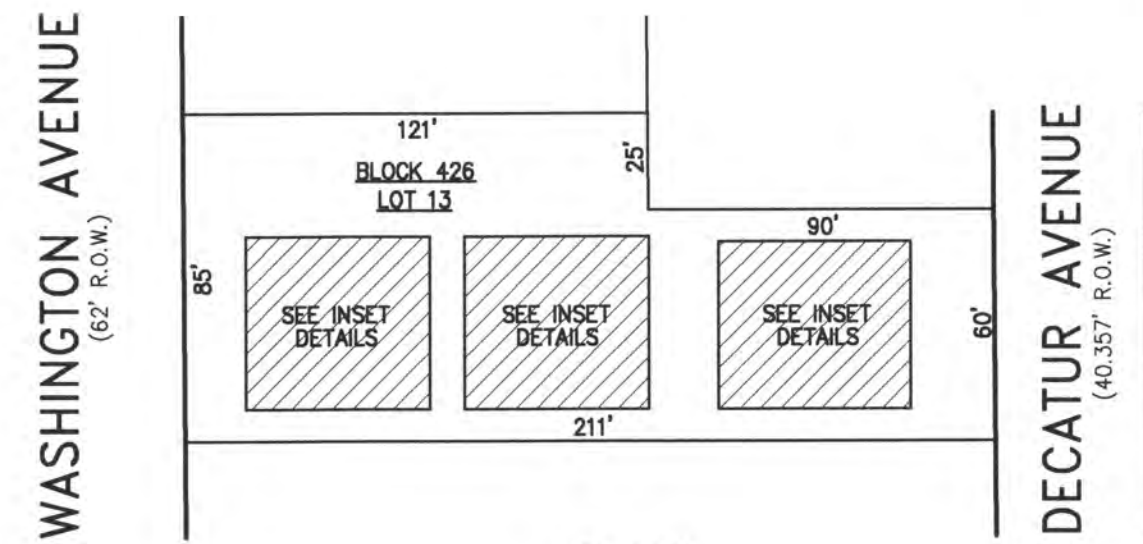
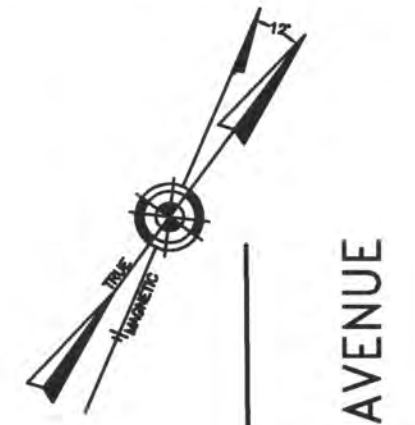


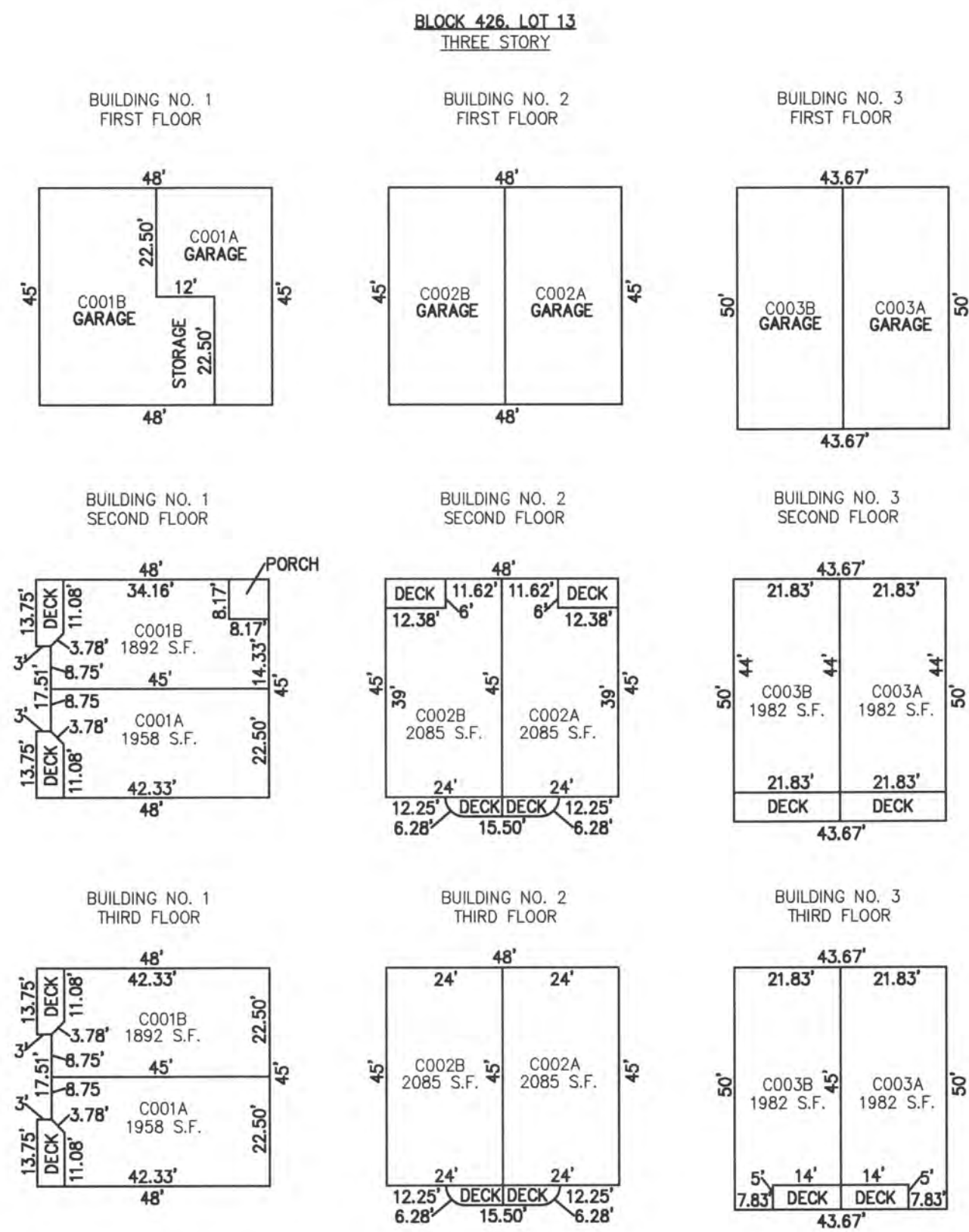
REVISIONS		
8-31-2009	CRAIG F. REMINGTON	23924
5-10-2010	CRAIG F. REMINGTON	23924
3-8-2012	CRAIG F. REMINGTON	23924
6-14-2013	CRAIG F. REMINGTON	23924

UNIT NO.	LOT NO.
C001A	C-01A
C001B	C-01B
C002A	C-02A
C002B	C-02B
C003A	C-03A
C003B	C-03B



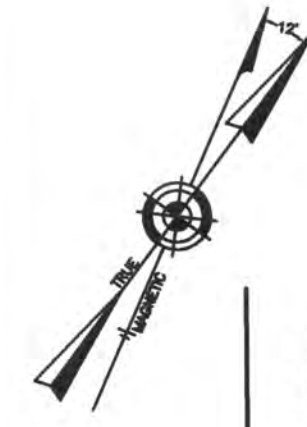
PLAN
SCALE: 1"=50'

BLOCK 426, LOT 13
BAY CLUB CONDOMINIUM
 223 WASHINGTON AVENUE &
 214 NORTH DECATUR AVENUE
 INSET "3N"

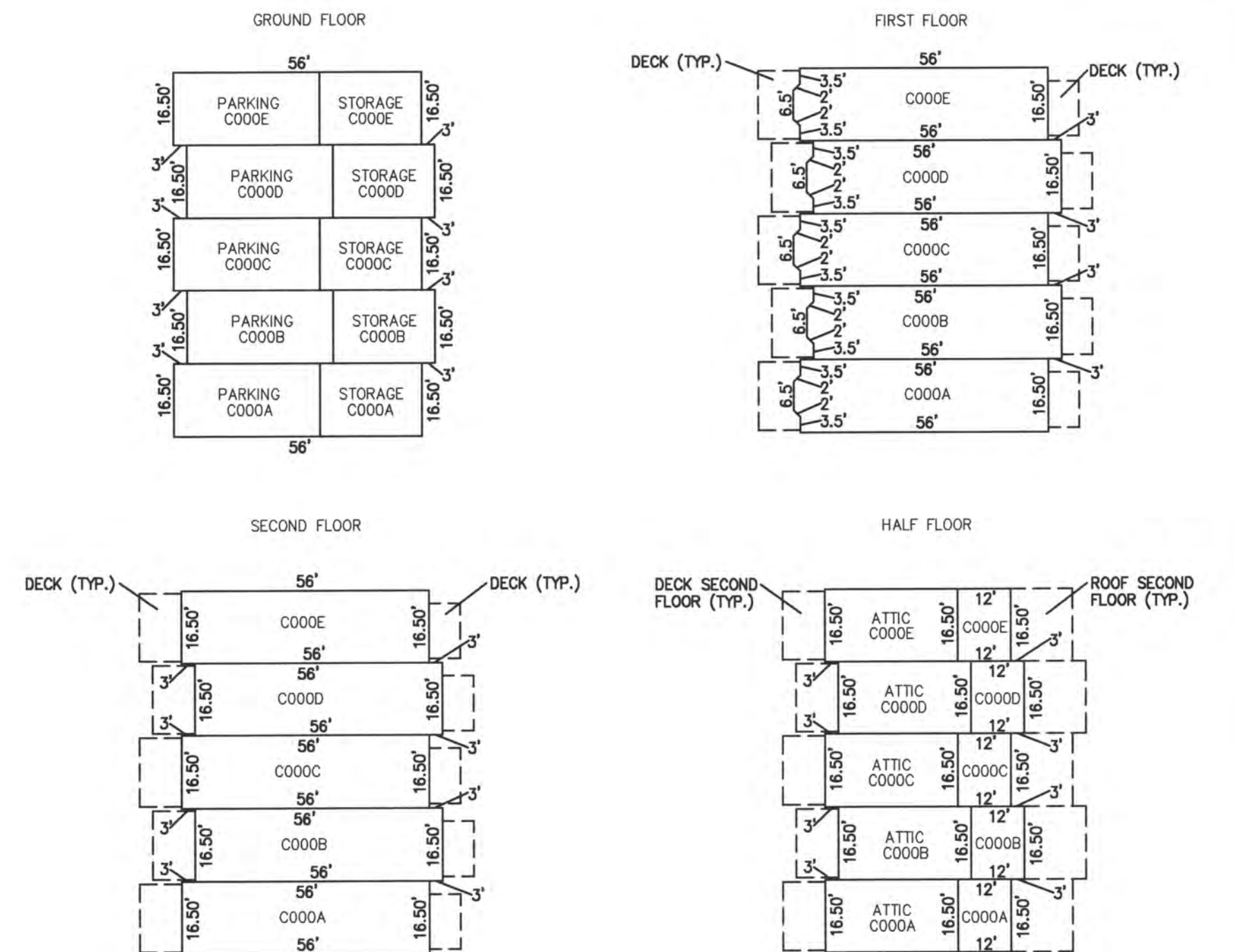


DETAILS
SCALE: 1"=30'

UNIT NO.	LOT NO.
C000A	C-01A
C000B	C-01B
C000C	C-02A
C000D	C-02B
C000E	C-03A



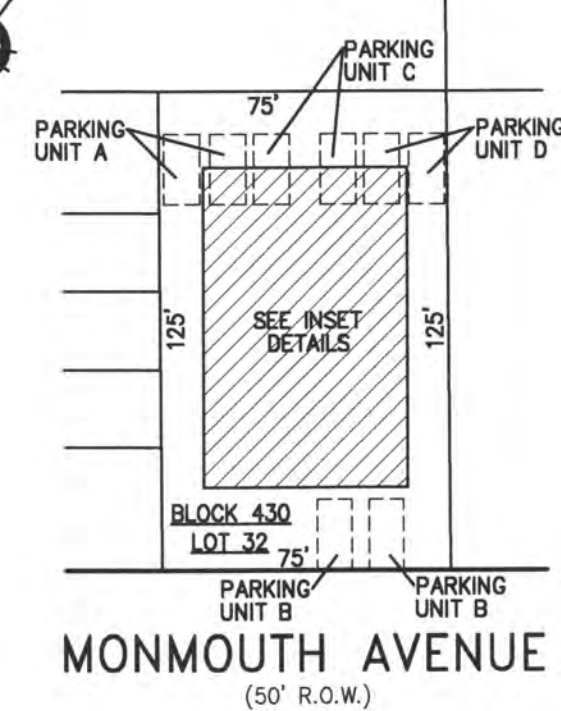
PLAN
SCALE: 1"=50'



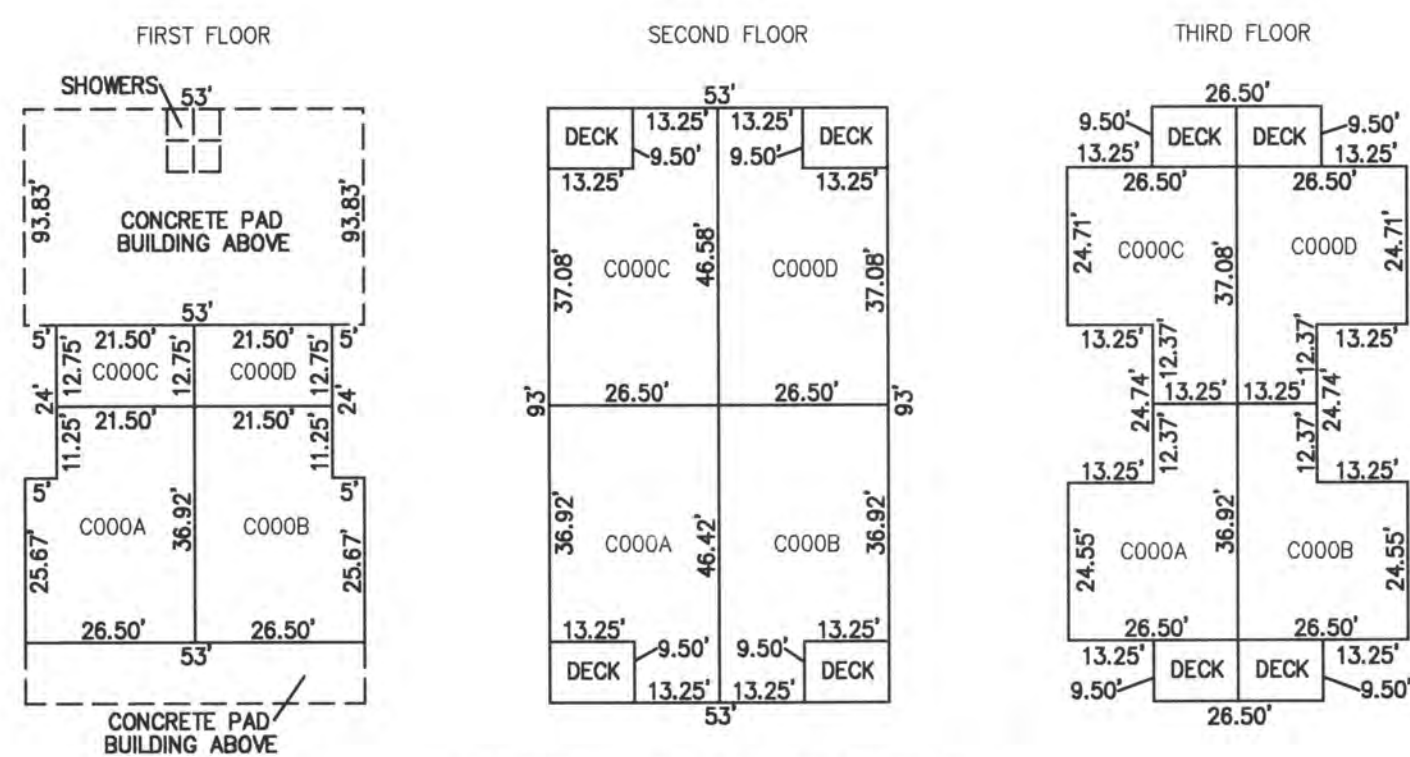
DETAILS
SCALE: 1"=30'

BLOCK 428, LOT 505
JEFFERSON WALK CONDOMINIUM
 205 NORTH JEFFERSON AVENUE
 INSET "3Y"

UNIT NO.	LOT NO.
C000A	C-01
C000B	C-02
C000C	C-03
C000D	C-04



PLAN
SCALE: 1"=50'



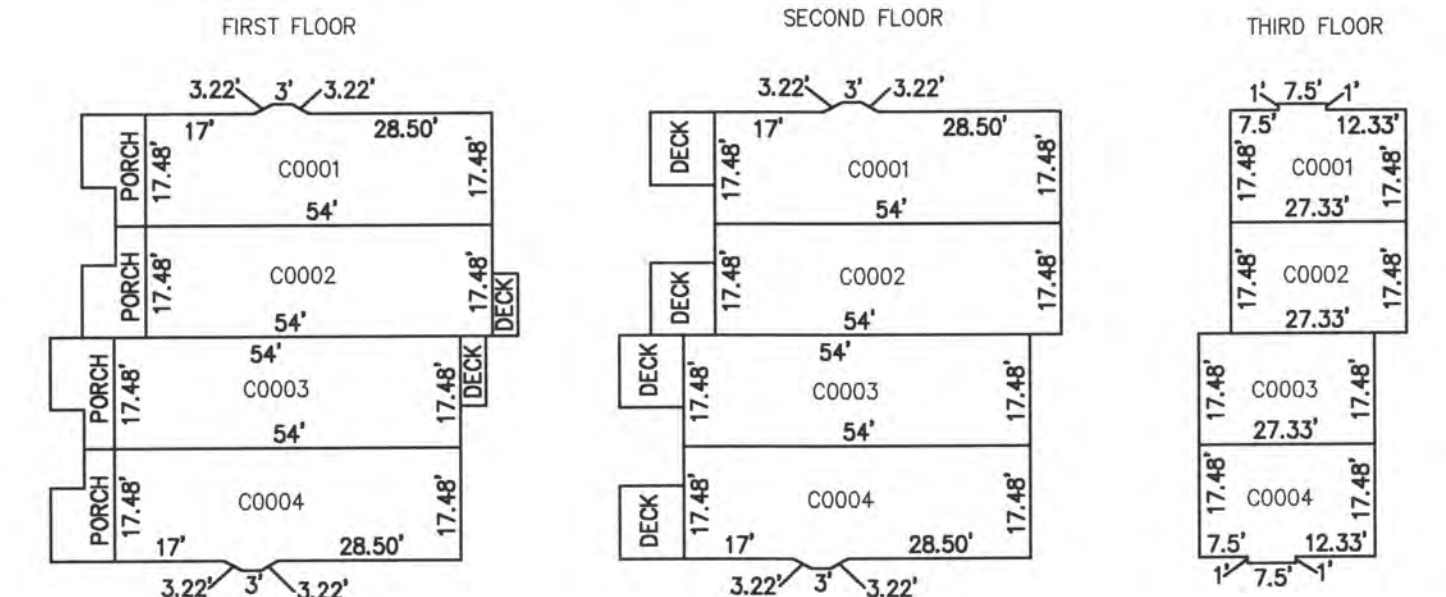
UNIT C000A - TOTAL LIVING AREA = 2862 S.F.
 UNIT C000B - TOTAL LIVING AREA = 2862 S.F.
 UNIT C000C - TOTAL LIVING AREA = 2211 S.F.
 UNIT C000D - TOTAL LIVING AREA = 2159 S.F.

DETAILS
SCALE: 1"=30'

BLOCK 430, LOT 32
HARBORSIDE CONDOMINIUMS
 9615 MONMOUTH AVENUE
 INSET "4G"



PLAN
SCALE: 1"=50'



UNIT C0001 - TOTAL LIVING AREA = 2391 S.F.
 UNIT C0002 - TOTAL LIVING AREA = 2391 S.F.
 UNIT C0003 - TOTAL LIVING AREA = 2391 S.F.
 UNIT C0004 - TOTAL LIVING AREA = 2391 S.F.

DETAILS
SCALE: 1"=30'

BLOCK 426, LOT 15
BAY VIEW AT WASHINGTON CONDOMINIUM
 215 NORTH WASHINGTON AVENUE
 INSET "4K"

CONDOMINIUM DETAILS AND DIMENSIONS
 BLOCK 426, LOT 13
 BLOCK 426, LOT 15
 BLOCK 428, LOT 505
 BLOCK 430, LOT 23
 SEE PLATE 12

"THIS TAX MAP PLATE HAS BEEN DIGITALLY DRAWN USING COMPUTER-AIDED DRAFTING/DESIGN (CADD) & COORDINATE GEOMETRY (COGO). IT IS BASED ON THE ORIGINAL DIGITALLY DRAWN TAX MAP PLATE BEARING THE OFFICIAL NEW JERSEY DIVISION TAXATION APPROVAL STAMP WITH APPROVAL DATE 6-3-2005 SERIAL NUMBER 846 AND SIGNATURES OF SIGNERS' THOMAS J. REILLY, CHIEF, LOCAL PROPERTY, FIELD ASSISTANCE. SANTO C. DIDONATO, SUPERVISING FIELD REPRESENTATIVE. THE ORIGINAL DIGITALLY DRAWN TAX MAP PLATE WITH THE OFFICIAL APPROVAL STAMP IS ON FILE WITH REMINGTON, VERNICK & WALBERG ENGINEERS."

TAX MAP
CITY OF MARGATE
 ATLANTIC COUNTY NEW JERSEY
 SCALE: AS NOTED DATE: 1-30-2004

CRAIG F. REMINGTON LAND SURVEYOR LIC. NO. 23924

REMINGTON, VERNICK & WALBERG ENGINEERS
 845 N. MAIN STREET, PLEASANTVILLE, NJ 08232
 (609) 645-710, FAX (609) 645-7076
 WEB SITE ADDRESS: WWW.RVW.COM