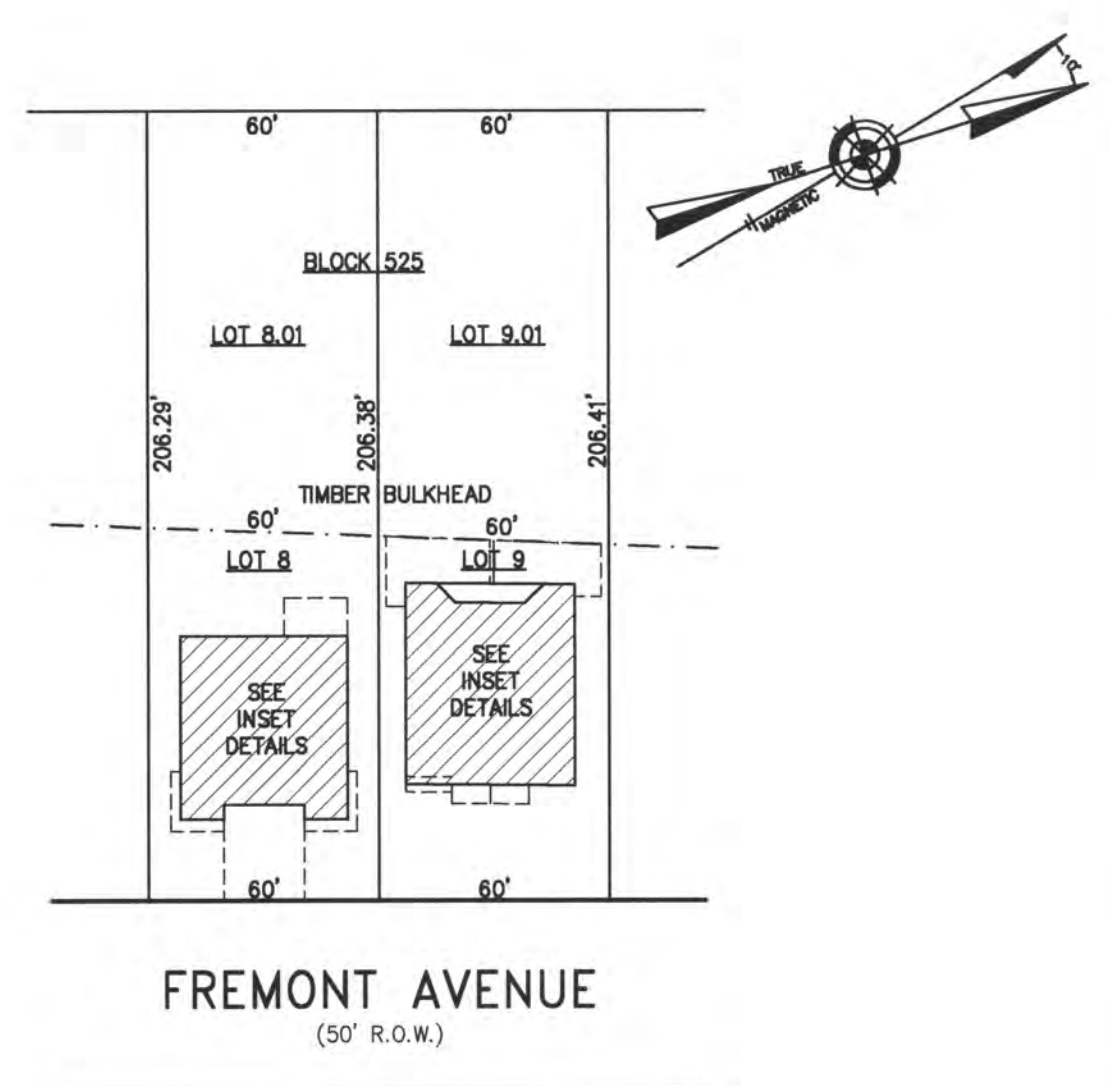


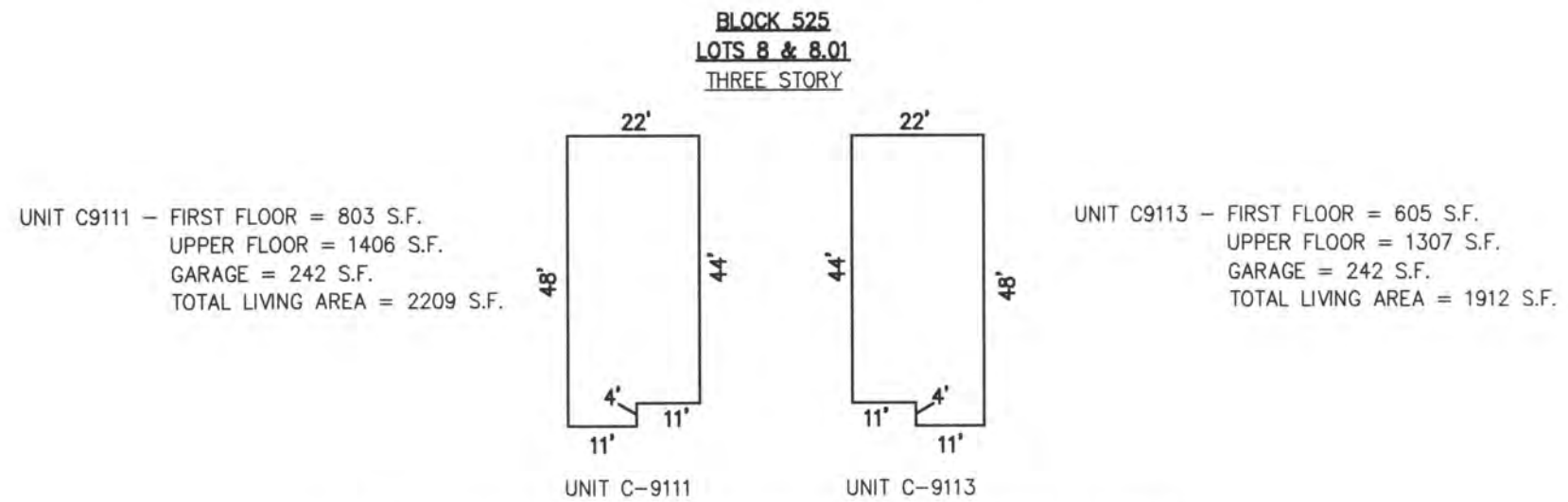
REVISIONS

| | |
|--|--|
| | |
| | |
| | |
| | |
| | |
| | |
| | |
| | |
| | |
| | |
| | |
| | |



FREMONT AVENUE
(50' R.O.W.)

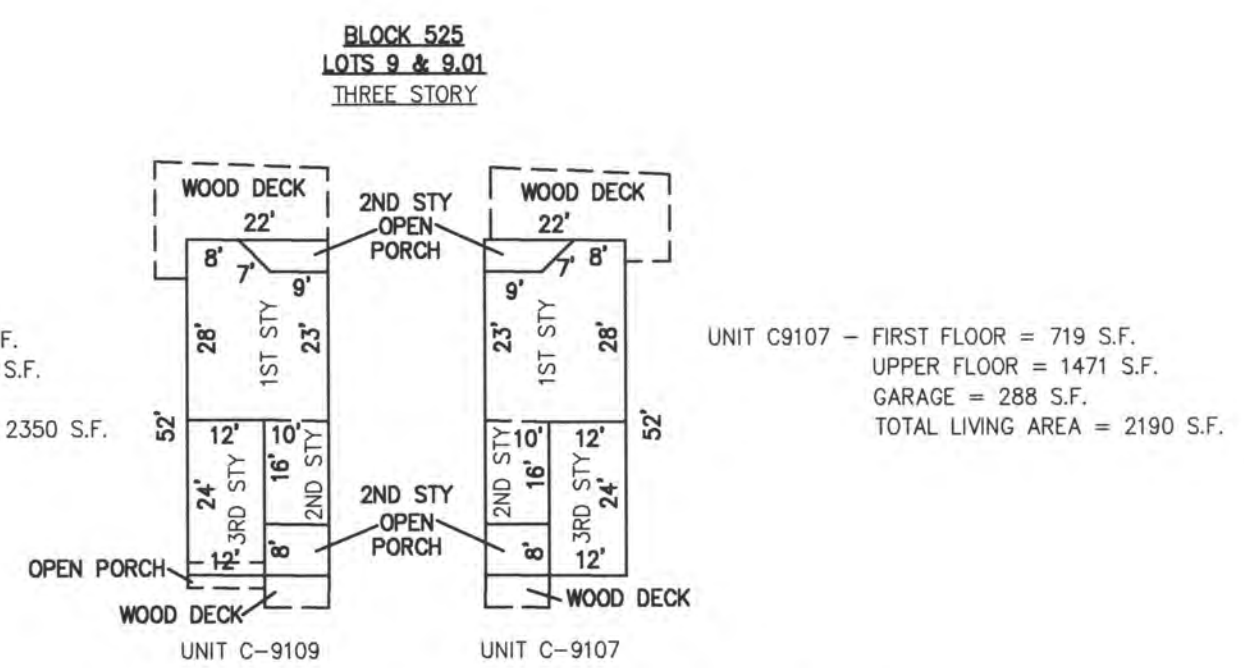
PLAN
SCALE: 1"=50'



DETAILS
SCALE: 1"=30'

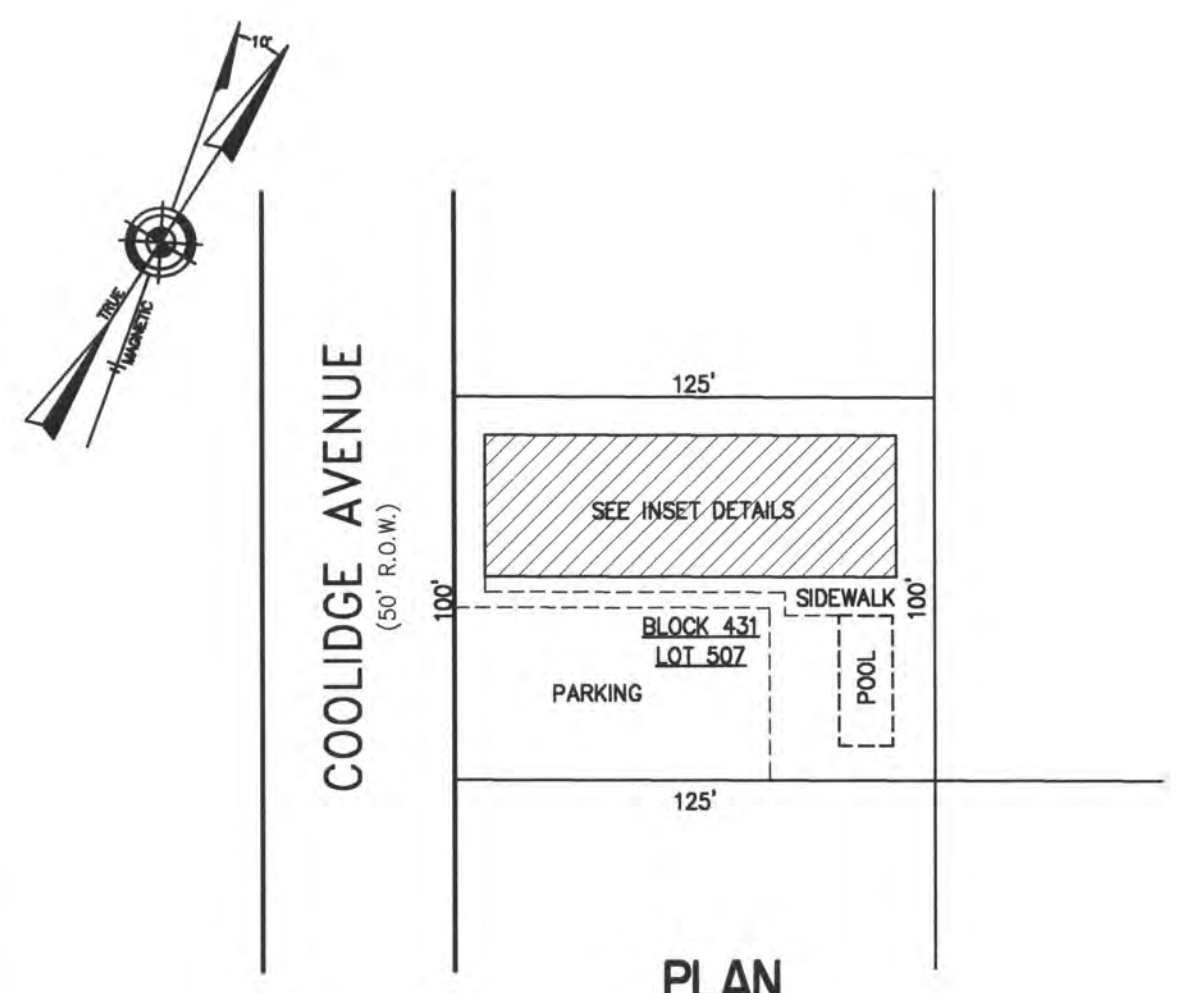
BLOCK 525, LOT 8 & 8.01
911-13 FREMONT CONDOMINIUM
911-13 FREMONT AVENUE

| UNIT NO. | LOT NO. |
|----------|---------|
| C-9111 | C-9111 |
| C-9113 | C-9113 |
| C-9107 | C-9107 |
| C-9109 | C-9109 |



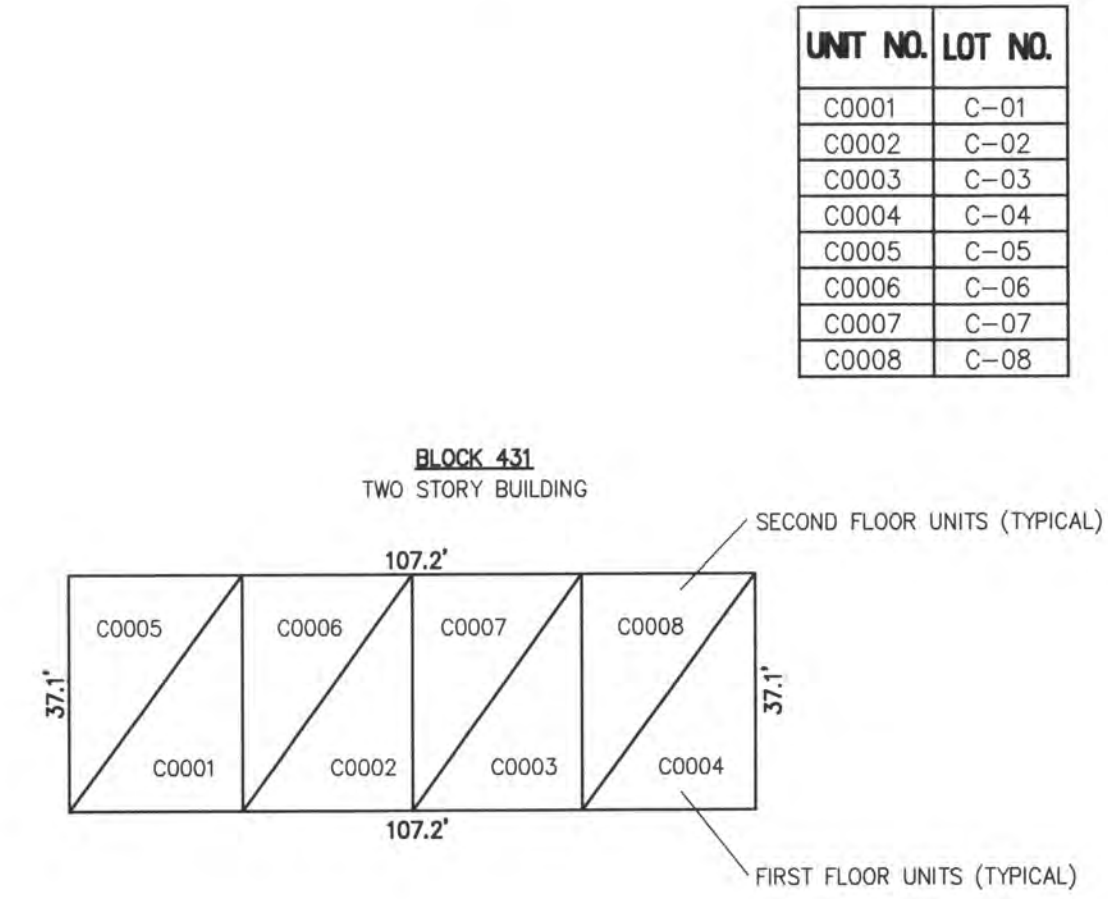
DETAILS
SCALE: 1"=30'

BLOCK 525, LOT 9 & 9.01
9107-09 FREMONT CONDOMINIUM
9107-09 FREMONT AVENUE
INSET "LLLL"



COOLIDGE AVENUE
(50' R.O.W.)

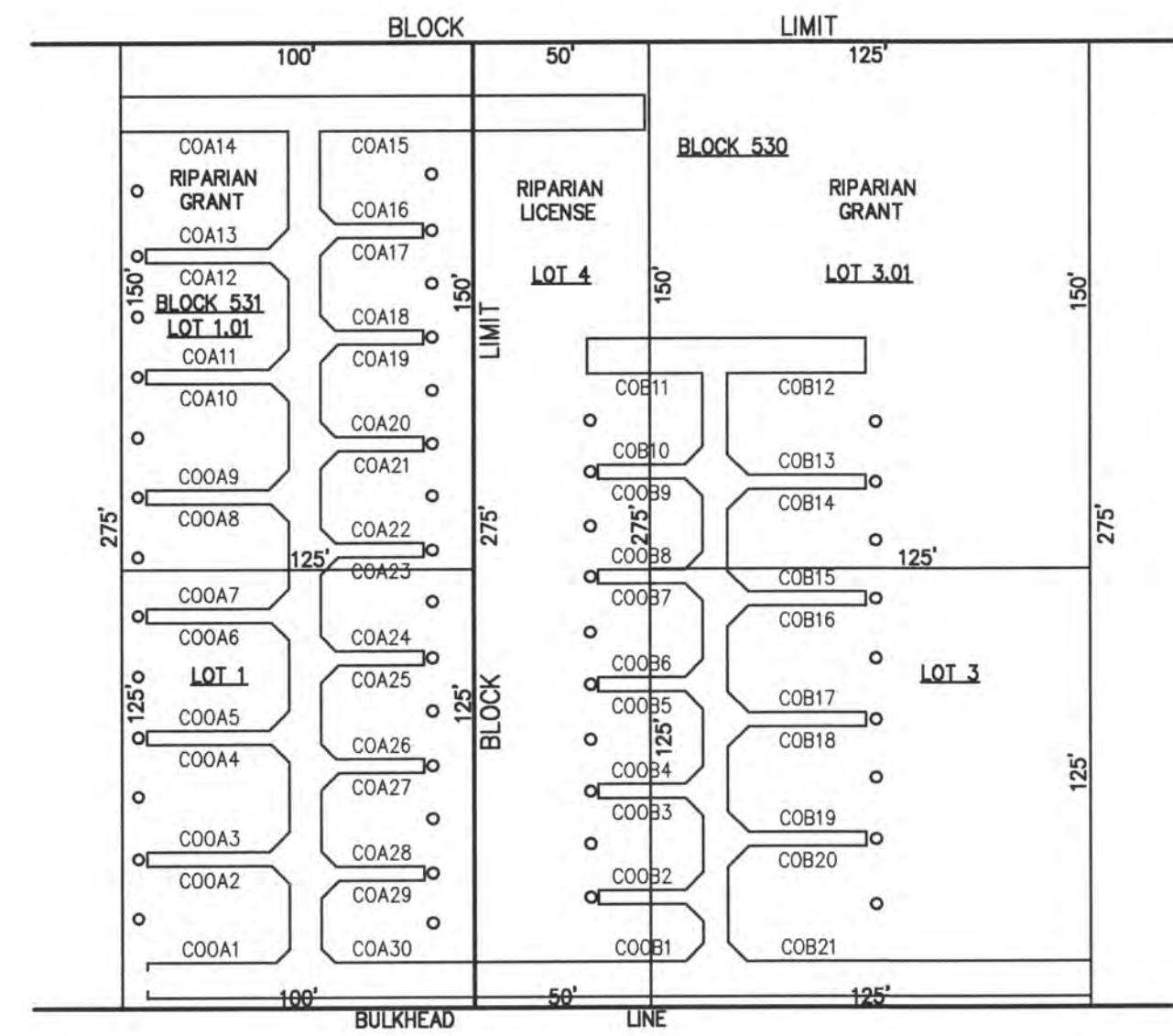
PLAN
SCALE: 1"=50'



DETAILS
SCALE: 1"=30'

BLOCK 431, LOT 507
ANNIE FAGAN'S CONDOMINIUM AND ASSOCIATION
211 N. COOLIDGE AVENUE
INSET "VVVV"

CONDOMINIUM DETAILS AND DIMENSIONS
BLOCK 525, LOT 8, 8.01 & 9, 9.01
BLOCK 531, LOT 3
BLOCK 431, LOT 507
SEE PLATE 12



AMHERST AVENUE
(75' R.O.W.)

PLAN
SCALE: 1"=50'

BLOCK 530, LOT 1
BLOCK 531, LOT 3, 4
BAY CLUB CONDOMINIUM
9707 AMHERST AVENUE
INSET "MMMM"

| UNIT NO. | LOT NO. |
|----------|---------|
| C00A1 | C-1.01 |
| C00A2 | C-2.01 |
| C00A3 | C-3.01 |
| C00A4 | C-4.01 |
| C00A5 | C-5.01 |
| C00A6 | C-6.01 |
| C00A7 | C-7.01 |
| C00A8 | C-8.01 |
| C00A9 | C-9.01 |
| C0A10 | C-10.01 |
| C0A11 | C-11.01 |
| C0A12 | C-12.01 |
| C0A13 | C-13.01 |
| C0A14 | C-14.01 |
| C0A15 | C-15.01 |
| C0A16 | C-16.01 |
| C0A17 | C-17.01 |
| C0A18 | C-18.01 |
| C0A19 | C-19.01 |
| C0A20 | C-20.01 |
| C0A21 | C-21.01 |
| C0A22 | C-22.01 |
| C0A23 | C-23.01 |
| C0A24 | C-24.01 |
| C0A25 | C-25.01 |
| C0A26 | C-26.01 |
| C0A27 | C-27.01 |
| C0A28 | C-28.01 |
| C0A29 | C-29.01 |
| C0A30 | C-30.01 |
| C0B01 | C-1.02 |
| C0B02 | C-2.02 |
| C0B03 | C-3.02 |
| C0B04 | C-4.02 |
| C0B05 | C-5.02 |
| C0B06 | C-6.02 |
| C0B07 | C-7.02 |
| C0B08 | C-8.02 |
| C0B09 | C-9.02 |
| C0B10 | C-10.02 |
| C0B11 | C-11.02 |
| C0B12 | C-12.02 |
| C0B13 | C-13.02 |
| C0B14 | C-14.02 |
| C0B15 | C-15.02 |
| C0B16 | C-16.02 |
| C0B17 | C-17.02 |
| C0B18 | C-18.02 |
| C0B19 | C-19.02 |
| C0B20 | C-20.02 |
| C0B21 | C-21.02 |

"THIS TAX MAP PLATE HAS BEEN DIGITALLY DRAWN USING COMPUTER-AIDED DRAFTING/DESIGN (CADD) & COORDINATE GEOMETRY (COGO). IT IS BASED ON THE ORIGINAL DIGITALLY DRAWN TAX MAP PLATE BEARING THE OFFICIAL NEW JERSEY DIVISION TAXATION APPROVAL STAMP WITH APPROVAL DATE 6-3-2005 SERIAL NUMBER 846 AND SIGNATURES OF SIGNERS THOMAS J. REILLY, CHIEF, LOCAL PROPERTY, FIELD ASSISTANCE. SANTO C. DIDONATO, SUPERVISING FIELD REPRESENTATIVE. THE ORIGINAL DIGITALLY DRAWN TAX MAP PLATE WITH THE OFFICIAL APPROVAL STAMP IS ON FILE WITH REMINGTON, VERNICK & WALBERG ENGINEERS."

TAX MAP
CITY OF MARGATE

ATLANTIC COUNTY NEW JERSEY
SCALE: AS NOTED DATE: 1-30-2004

CRAIG F. REMINGTON LAND SURVEYOR LIC. NO. 23924



REMINGTON, VERNICK & WALBERG ENGINEERS
24 GA 28048700
845 N. MAIN STREET, PLEASANTVILLE, N.J. 08232
(609) 645-7100 FAX (609) 645-7076
WEB SITE ADDRESS: WWW.RVE.COM