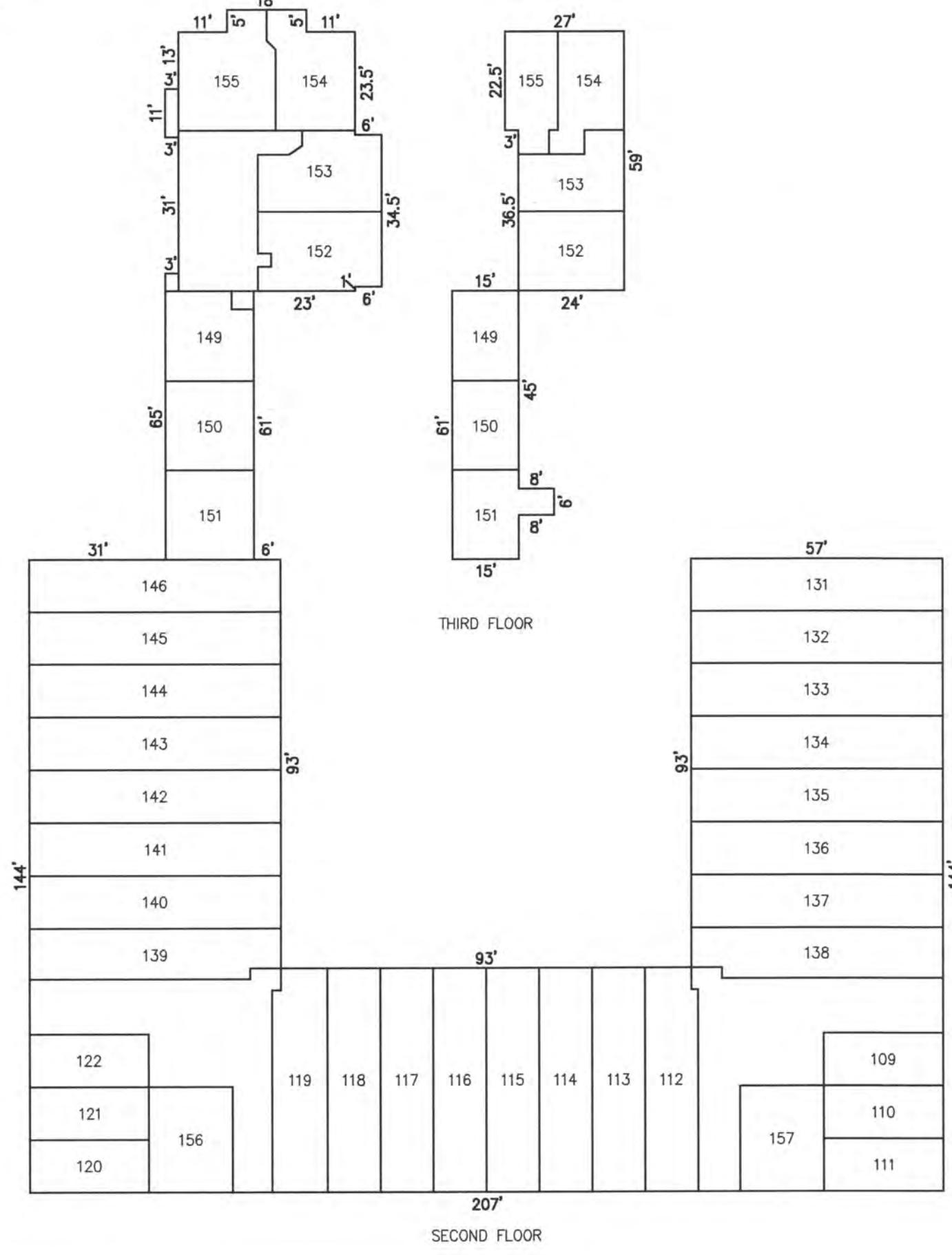
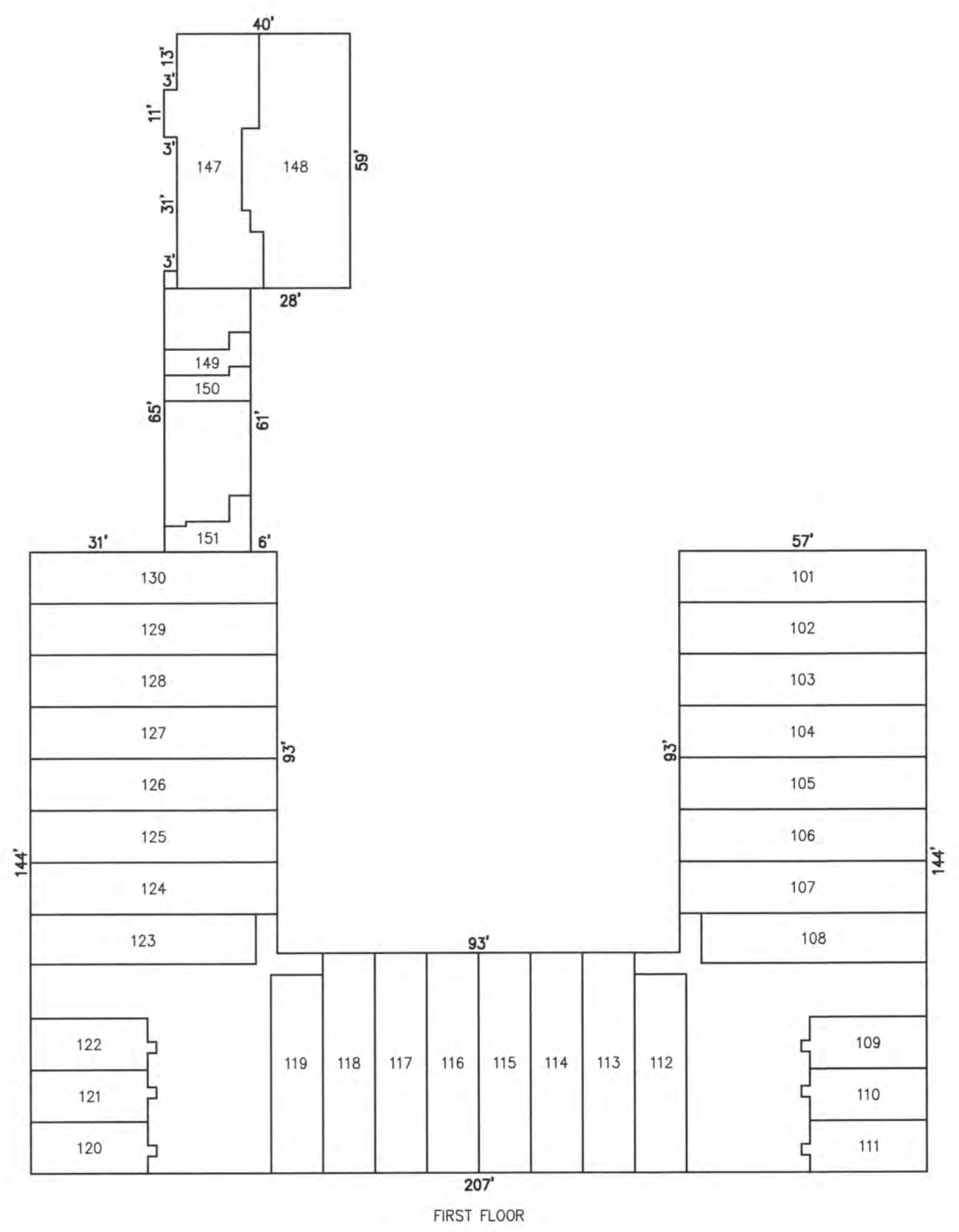
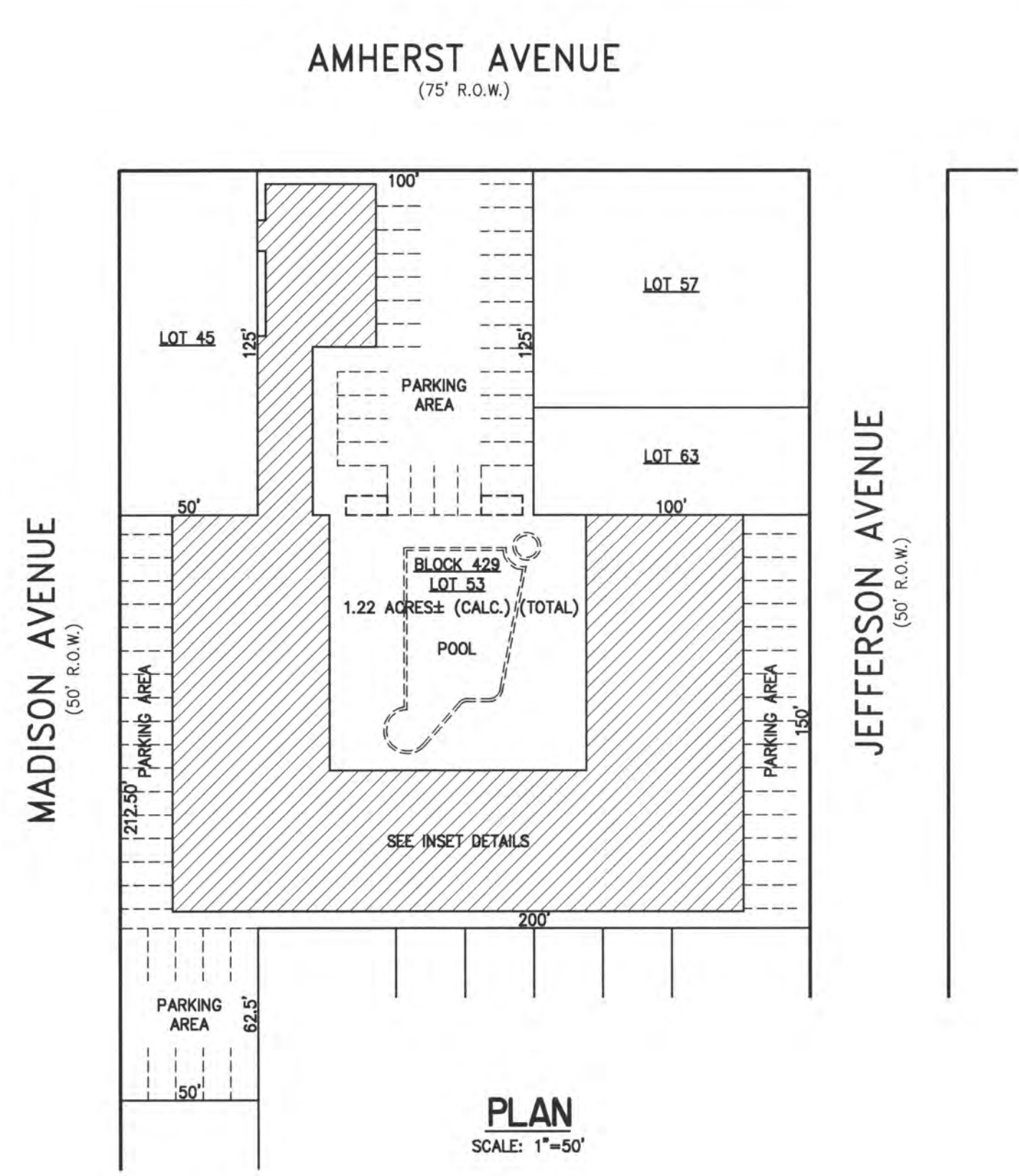
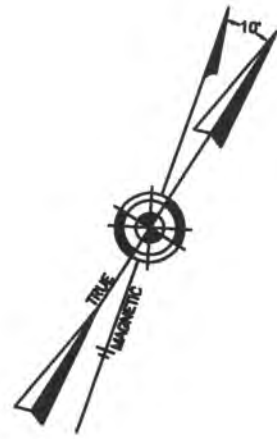
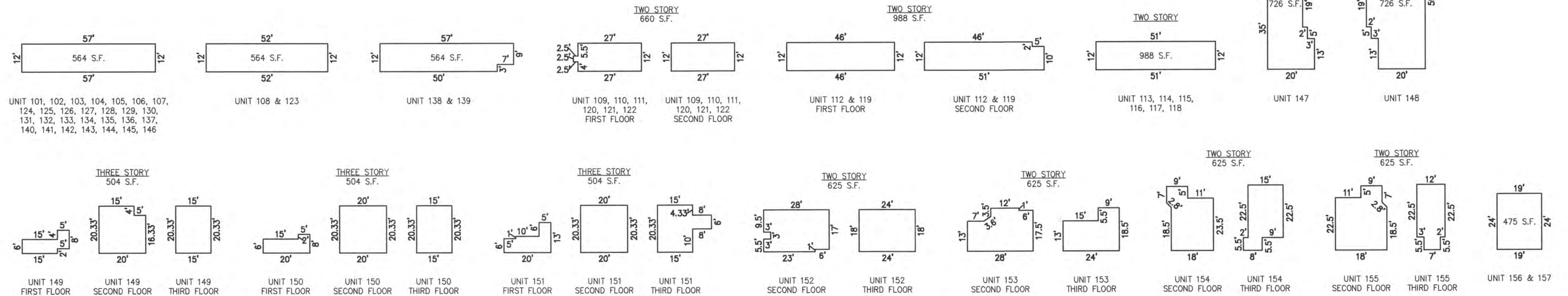


REVISIONS	



UNIT NO.	LOT NO.
UNIT 101	C-53.101
UNIT 102	C-53.102
UNIT 103	C-53.103
UNIT 104	C-53.104
UNIT 105	C-53.105
UNIT 106	C-53.106
UNIT 107	C-53.107
UNIT 108	C-53.108
UNIT 109	C-53.109
UNIT 110	C-53.110
UNIT 111	C-53.111
UNIT 112	C-53.112
UNIT 113	C-53.113
UNIT 114	C-53.114
UNIT 115	C-53.115
UNIT 116	C-53.116
UNIT 117	C-53.117
UNIT 118	C-53.118
UNIT 119	C-53.119
UNIT 120	C-53.120
UNIT 121	C-53.121
UNIT 122	C-53.122
UNIT 123	C-53.123
UNIT 124	C-53.124
UNIT 125	C-53.125
UNIT 126	C-53.126
UNIT 127	C-53.127
UNIT 128	C-53.128
UNIT 129	C-53.129
UNIT 130	C-53.130
UNIT 131	C-53.131
UNIT 132	C-53.132
UNIT 133	C-53.133
UNIT 134	C-53.134
UNIT 135	C-53.135
UNIT 136	C-53.136
UNIT 137	C-53.137
UNIT 138	C-53.138
UNIT 139	C-53.139
UNIT 140	C-53.140
UNIT 141	C-53.141
UNIT 142	C-53.142
UNIT 143	C-53.143
UNIT 144	C-53.144
UNIT 145	C-53.145
UNIT 146	C-53.146
UNIT 147	C-53.147
UNIT 148	C-53.148
UNIT 149	C-53.149
UNIT 150	C-53.150
UNIT 151	C-53.151
UNIT 152	C-53.152
UNIT 153	C-53.153
UNIT 154	C-53.154
UNIT 155	C-53.155
UNIT 156	C-53.156
UNIT 157	C-53.157
UNIT 158	C-53.158
UNIT 159	C-53.159
UNIT 160	C-53.160
UNIT 161	C-53.161



**BLOCK 429, LOT 53
MARGATE MARINER CONDOMINIUM
9510 AMHERST AVENUE
INSET "FFFF"**

CONDOMINIUM DETAILS AND DIMENSIONS
BLOCK 429, LOT 53
SEE PLATE I2

"THIS TAX MAP PLATE HAS BEEN DIGITALLY DRAWN USING COMPUTER-AIDED DRAFTING/DESIGN (CADD) & COORDINATE GEOMETRY (COGO). IT IS BASED ON THE ORIGINAL DIGITALLY DRAWN TAX MAP PLATE BEARING THE OFFICIAL NEW JERSEY DIVISION TAXATION APPROVAL STAMP WITH APPROVAL DATE 6-3-2005 SERIAL NUMBER 846 AND SIGNATURES OF SIGNERS THOMAS J. REILLY, CHIEF, LOCAL PROPERTY, FIELD ASSISTANCE, SANTO C. DIDONATO, SUPERVISING FIELD REPRESENTATIVE. THE ORIGINAL DIGITALLY DRAWN TAX MAP PLATE WITH THE OFFICIAL APPROVAL STAMP IS ON FILE WITH REMINGTON, VERNICK & WALBERG ENGINEERS."

**TAX MAP
CITY OF MARGATE**

ATLANTIC COUNTY NEW JERSEY
SCALE: AS NOTED DATE: 1-30-2004

CRAIG F. REMINGTON LAND SURVEYOR LIC. NO. 23924

RV & W
REMINGTON, VERNICK & WALBERG ENGINEERS
24 GA 28048700
845 N. MAIN STREET, PLEASANTVILLE, NJ 08232
(609) 645-710, FAX (609) 645-7076
WEB SITE ADDRESS: WWW.RVW.COM