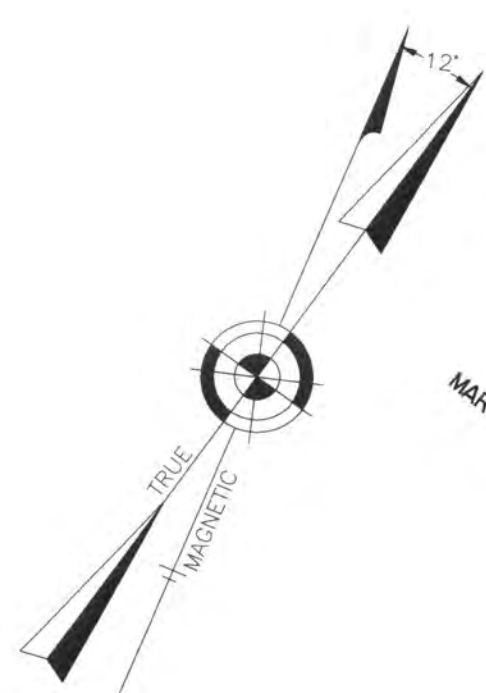


KEY MAP

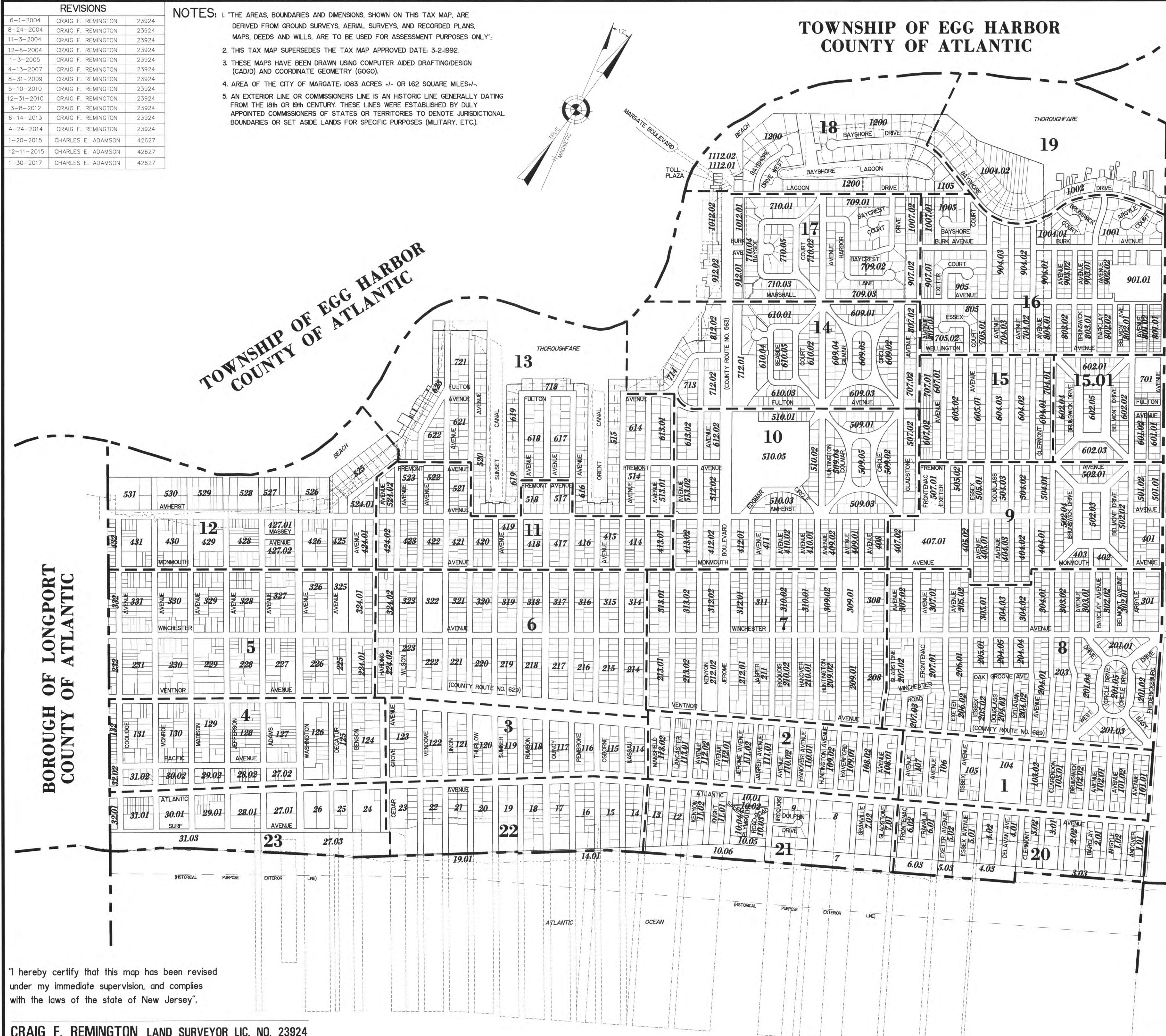
KEY MAP

REVISIONS		
6-1-2004	CRAIG F. REMINGTON	23924
8-24-2004	CRAIG F. REMINGTON	23924
11-3-2004	CRAIG F. REMINGTON	23924
12-8-2004	CRAIG F. REMINGTON	23924
1-3-2005	CRAIG F. REMINGTON	23924
4-13-2007	CRAIG F. REMINGTON	23924
8-31-2009	CRAIG F. REMINGTON	23924
5-10-2010	CRAIG F. REMINGTON	23924
12-31-2010	CRAIG F. REMINGTON	23924
3-8-2012	CRAIG F. REMINGTON	23924
6-14-2013	CRAIG F. REMINGTON	23924
4-24-2014	CRAIG F. REMINGTON	23924
1-20-2015	CHARLES E. ADAMSON	42627
12-11-2015	CHARLES E. ADAMSON	42627
1-30-2017	CHARLES E. ADAMSON	42627

- NOTES:
- THE AREAS, BOUNDARIES AND DIMENSIONS, SHOWN ON THIS TAX MAP, ARE DERIVED FROM GROUND SURVEYS, AERIAL SURVEYS, AND RECORDED PLANS, MAPS, DEEDS AND WILLS. ARE TO BE USED FOR ASSESSMENT PURPOSES ONLY;
 - THIS TAX MAP SUPERSEDES THE TAX MAP APPROVED DATE: 3-2-1992.
 - THESE MAPS HAVE BEEN DRAWN USING COMPUTER AIDED DRAFTING/DESIGN (CAD/D) AND COORDINATE GEOMETRY (GOGO).
 - AREA OF THE CITY OF MARGATE, 1083 ACRES +/- OR 162 SQUARE MILES +/-.
 - AN EXTERIOR LINE OR COMMISSIONERS LINE IS AN HISTORIC LINE GENERALLY DATING FROM THE 18th OR 19th CENTURY. THESE LINES WERE ESTABLISHED BY DULY APPOINTED COMMISSIONERS OF STATES OR TERRITORIES TO DENOTE JURISDICTIONAL BOUNDARIES OR SET ASIDE LANDS FOR SPECIFIC PURPOSES (MILITARY, ETC).



TOWNSHIP OF EGG HARBOR COUNTY OF ATLANTIC



LEGEND KEY MAP

	10	PLATE NUMBER
	107	BLOCK NUMBER
		ARTIFICIAL-BLOCK-LIMIT-LINE
		PLATE DELINEATION LINE
		MUNICIPAL BOUNDARY LINE
		WATERWAY LINES
		ASSESSMENT LINE
		TIDELANDS LINE
		WETLAND AREA - W.L.A.
		FLOOD HAZARD AREA - F.H.A.
		PIERHEAD OR BULKHEAD LINE
		PIERHEAD OR BULKHEAD LINE (BLOCK LIMIT LINE)
		RIPIARIAN GRANT LAND (PROPERTY)
		RIPIARIAN LAND LOT NUMBER (HISTORICAL PURPOSE)
		EXTERIOR LINE

DETAIL SHEET 1.01

	5	NEW BLOCK NUMBERS
		NEW LOT NUMBERS
		OLD BLOCK NUMBERS
		OLD LOT NUMBERS
		ARTIFICIAL-BLOCK-LIMIT-LINE
		LOT-LINE
		OLD LOT LINE (PROPERTY LINE)
		WATERWAY LINES
		ASSESSMENT LINE
		TIDELANDS LINE
		WETLAND AREA - W.L.A.
		FLOOD HAZARD AREA - F.H.A.
		PIERHEAD OR BULKHEAD LINE
		PIERHEAD OR BULKHEAD LINE (BLOCK LIMIT LINE)
		RIPIARIAN GRANT LAND (PROPERTY)
		RIPIARIAN LAND LOT NUMBER (HISTORICAL PURPOSE)
		EXTERIOR LINE

"THIS TAX MAP PLATE HAS BEEN DIGITALLY DRAWN USING COMPUTER-AIDED DRAFTING/DESIGN (CAD/D) & COORDINATE GEOMETRY (GOGO). IT IS BASED ON THE ORIGINAL DIGITALLY DRAWN TAX MAP PLATE BEARING THE OFFICIAL NEW JERSEY DIVISION TAXATION APPROVAL STAMP WITH APPROVAL DATE 6-3-2005 SERIAL NUMBER 846 AND SIGNATURES OF SIGNERS: THOMAS J. REILLY, CHIEF, LOCAL PROPERTY, FIELD ASSISTANCE. SANTO C. DIDONATO, SUPERVISING FIELD REPRESENTATIVE. THE ORIGINAL DIGITALLY DRAWN TAX MAP PLATE WITH THE OFFICIAL APPROVAL STAMP IS ON FILE WITH REMINGTON, VERNICK & WALBERG ENGINEERS."

KEY MAP CITY OF MARGATE

ATLANTIC COUNTY NEW JERSEY
SCALE: 1" = 400' DATE: 11-01-2003
CRAIG F. REMINGTON LAND SURVEYOR LIC. NO. 23924
 REMINGTON, VERNICK & WALBERG ENGINEERS
845 N. MAN STREET, PLEASANTVILLE, NJ 08232
(609) 645-710, FAX (609) 645-7076
WEB SITE ADDRESS: WWW.RVWE.COM
TO SHOW CONDITIONS AS OF 1-30-2017

"I hereby certify that this map has been revised under my immediate supervision, and complies with the laws of the state of New Jersey."

CRAIG F. REMINGTON LAND SURVEYOR LIC. NO. 23924

ATLANTIC OCEAN

KEY MAP