

SHEET 25

SHEET 6

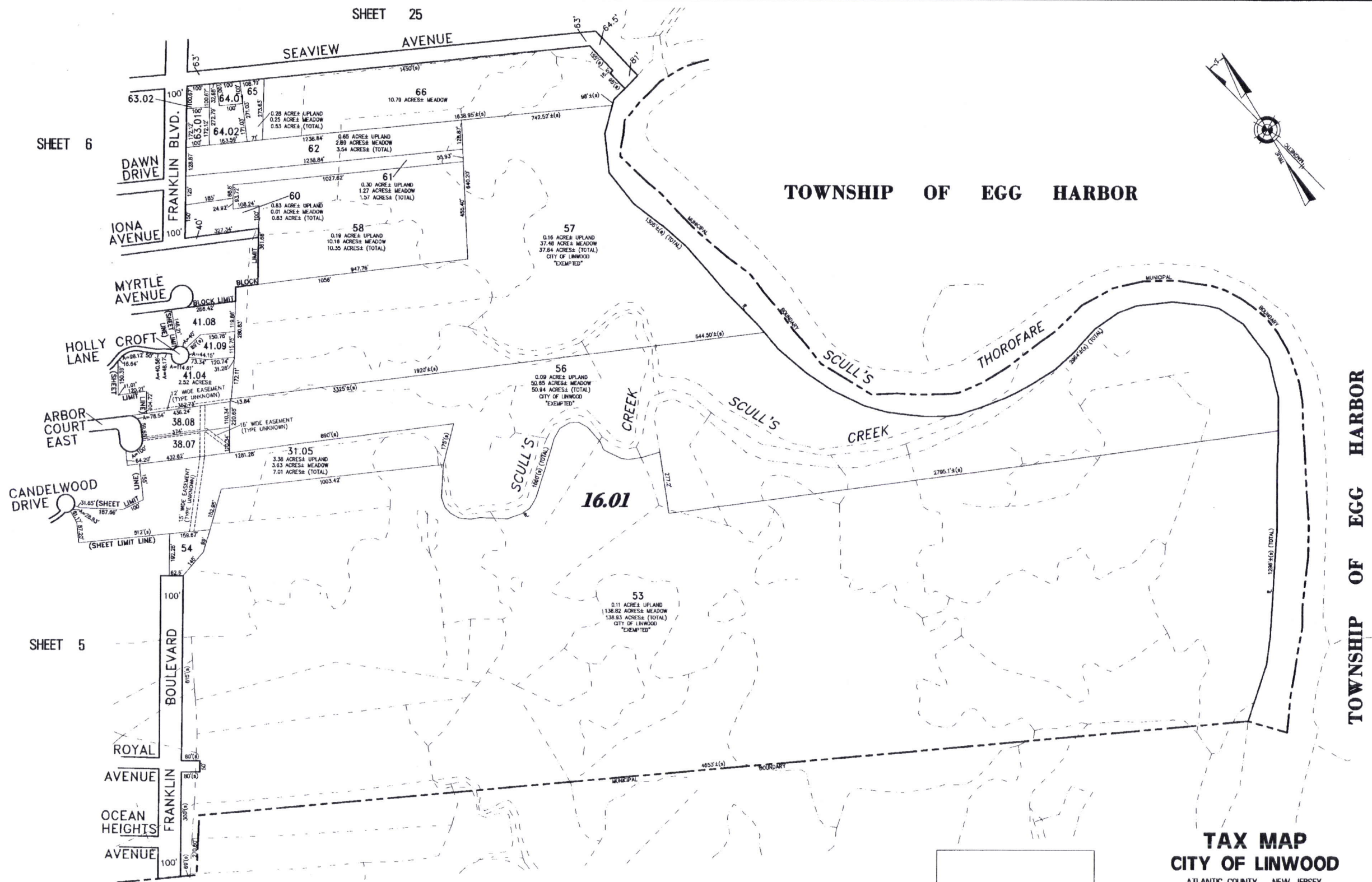
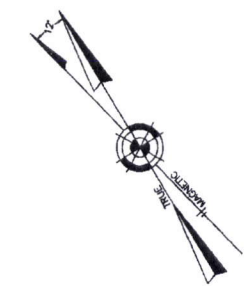
SHEET 5

TOWNSHIP OF EGG HARBOR

TOWNSHIP OF EGG HARBOR

CITY OF SOMERS POINT

296



TAX MAP
CITY OF LINWOOD

ATLANTIC COUNTY NEW JERSEY
SCALE: 1" = 200' DATE: 5-1-2002

CRAIG F. REMINGTON LAND SURVEYOR LIC. NO. 23924



REMINGTON, VERNICK & WALBERG ENGINEERS
24 GA 28048700
845 N. MAIN STREET, PLEASANTVILLE, NJ 08232
(609) 646-710, FAX (609) 646-7076
WEB SITE ADDRESS: WWW.RVW.COM