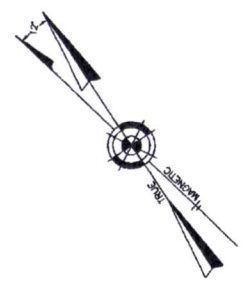


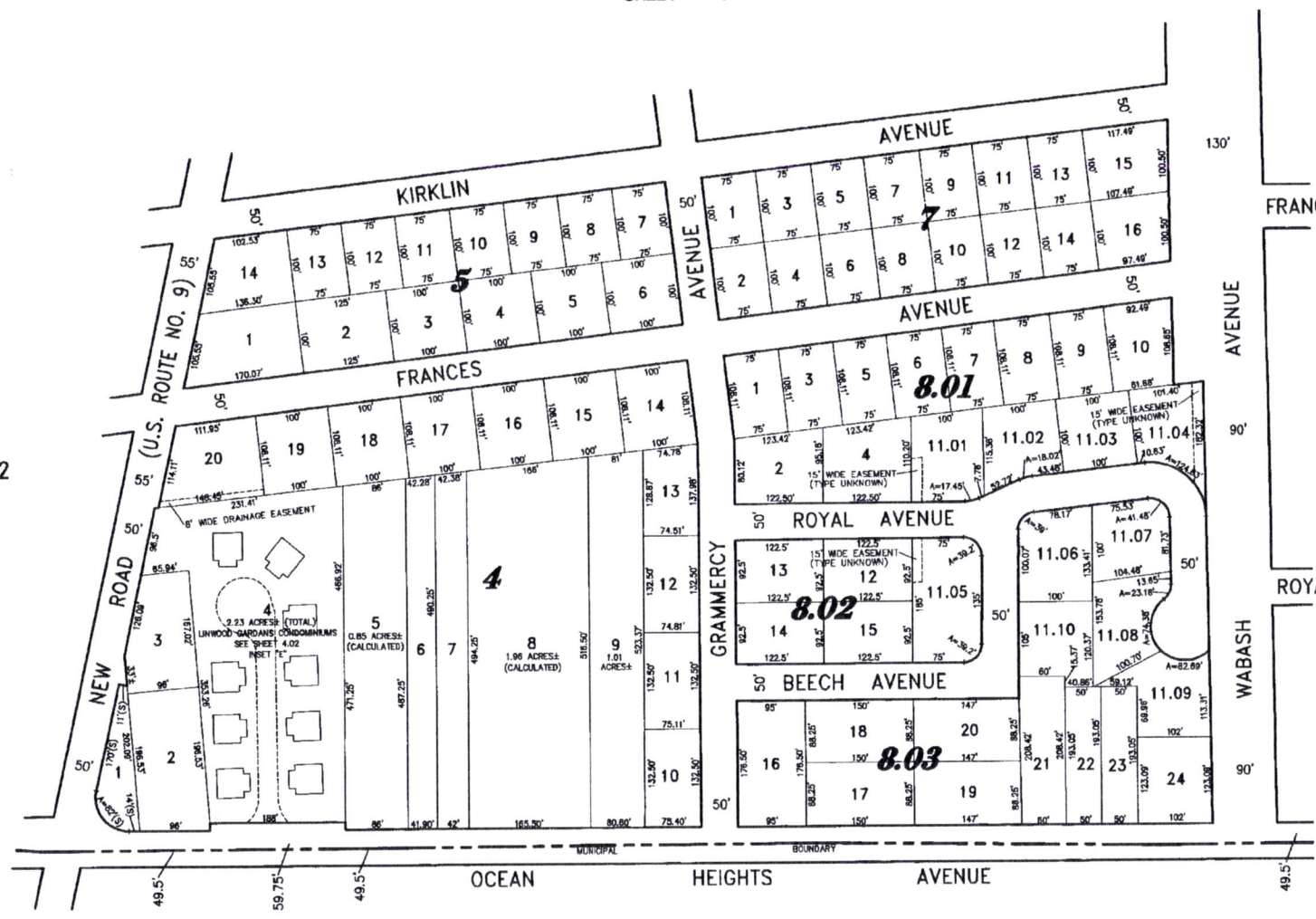
SHEET 4



SHEET 2

SHEET 5

271



CITY OF SOMERS POINT

TAX MAP  
CITY OF LINWOOD

ATLANTIC COUNTY NEW JERSEY  
SCALE: 1" = 100' DATE: 6-1-2002

CRAIG F. REMINGTON LAND SURVEYOR LIC. NO. 23924



REMINGTON, VERNICK & WALBERG ENGINEERS  
24 CA 28048700  
845 N. MAIN STREET, PLEASANTVILLE, N.J. 08232  
(609) 645-780, FAX (609) 645-7076  
WEB SITE ADDRESS: WWW.RVW.COM