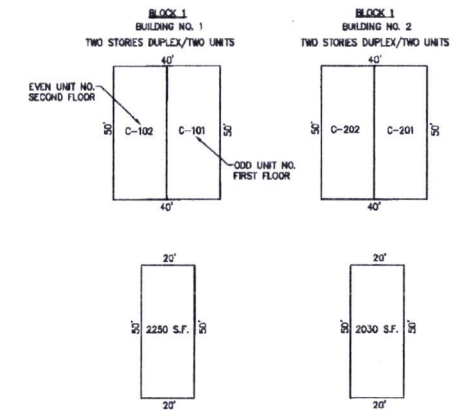
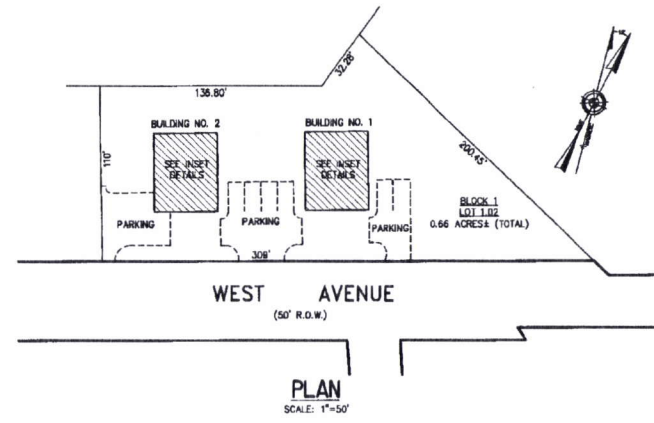
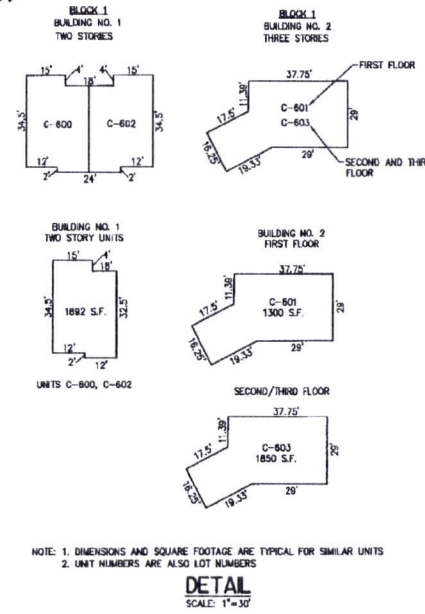
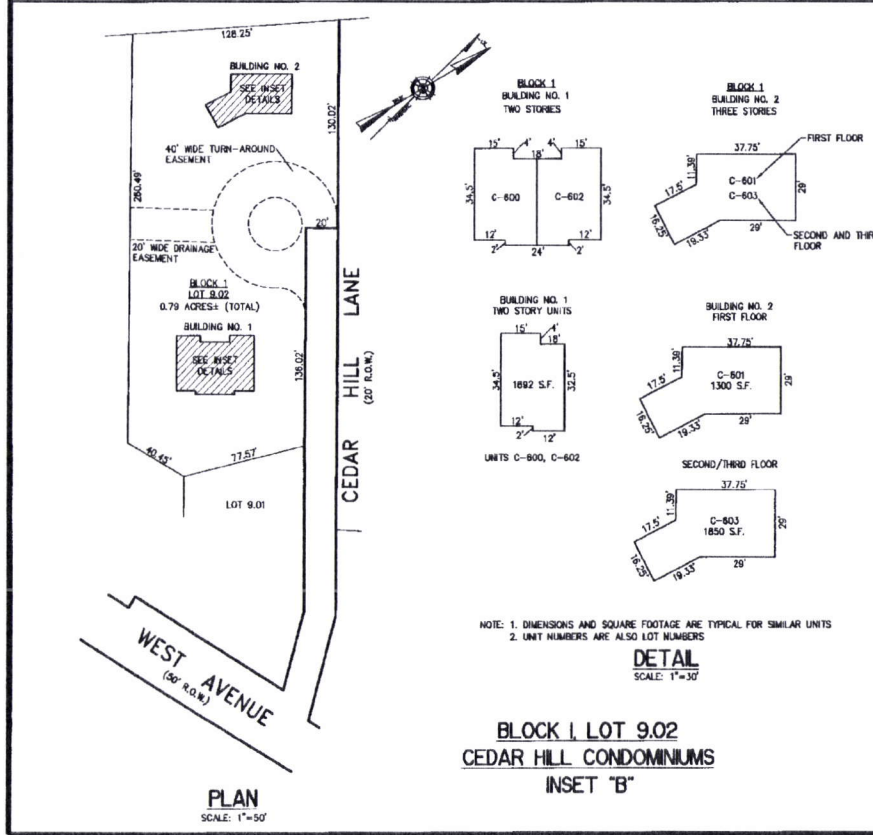


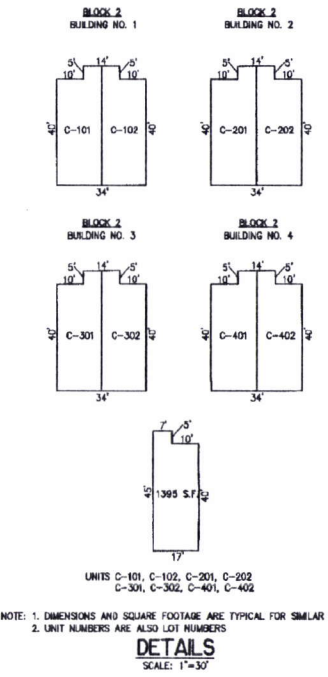
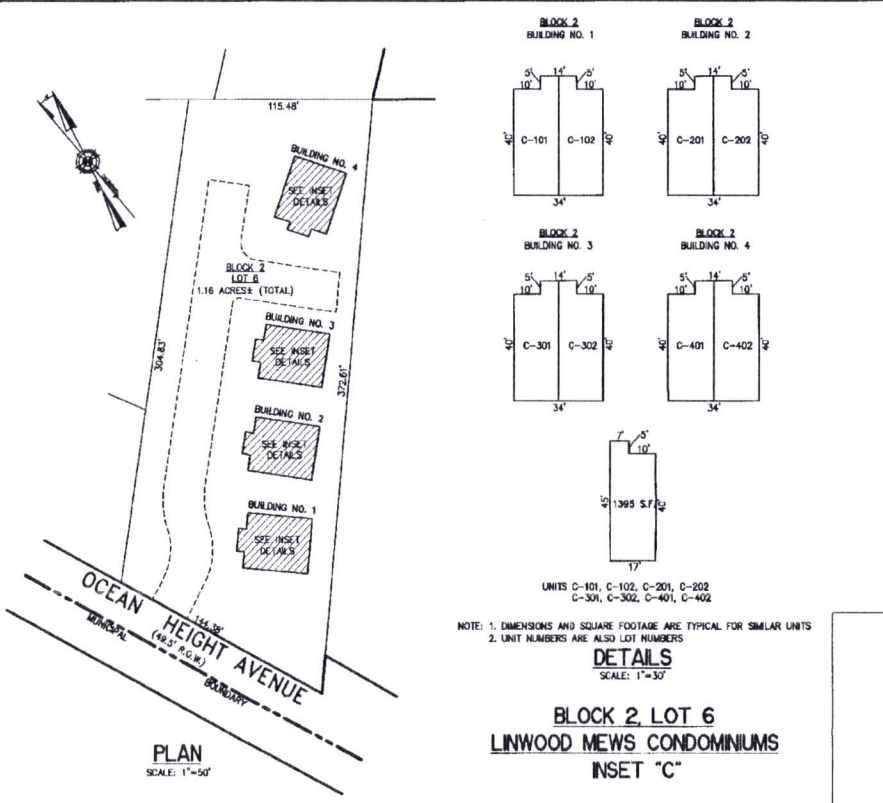
**BLOCK 2, LOT 7
CEDAR HOLLOW CONDOMINIUMS
INSET 'D'**



**BLOCK 1, LOT 102
MEADOWS EDGE CONDOMINIUMS
INSET 'A'**



**BLOCK 1, LOT 9.02
CEDAR HILL CONDOMINIUMS
INSET 'B'**



**BLOCK 2, LOT 6
LINWOOD MEWS CONDOMINIUMS
INSET 'C'**

CONDOMINIUM DETAILS AND DIMENSIONS
BLOCK 1, LOT 102
BLOCK 1, LOT 9.02
SEE PLATE 1
BLOCK 2, LOT 6
BLOCK 2, LOT 7
SEE PLATE 2

**TAX MAP
CITY OF LINWOOD**

ATLANTIC COUNTY NEW JERSEY
SCALE: NOTED DATE: 10-1-2002
CRAIG F. REMINGTON LAND SURVEYOR LIC. NO. 23824
REMINGTON, VERNICK & WALBERG ENGINEERS
24 GA 28048700
846 N. MAIN STREET, PLEASANTVILLE, NJ 08232
(609) 648-7800, FAX (609) 648-7076
WEB SITE ADDRESS: WWW.RVW.COM