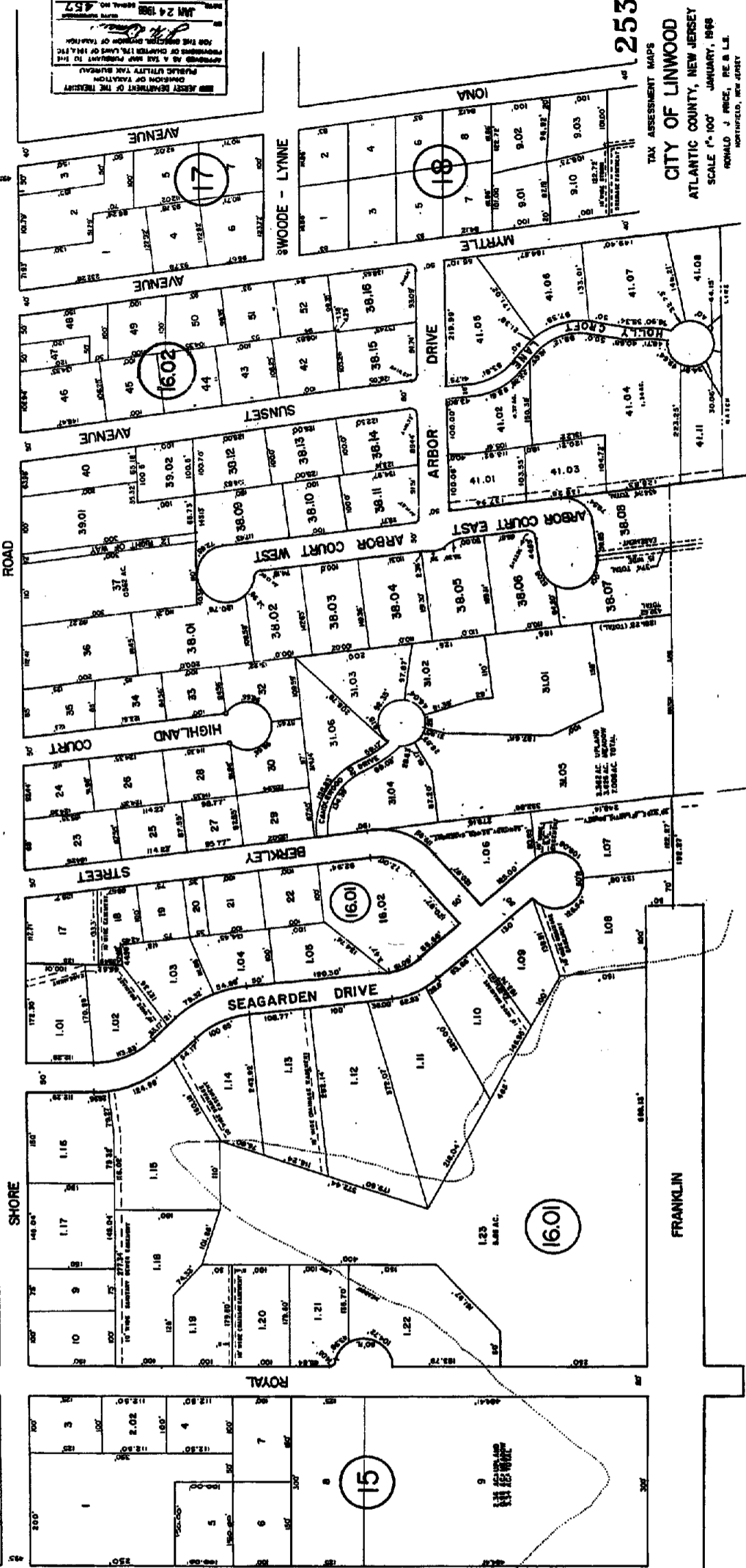
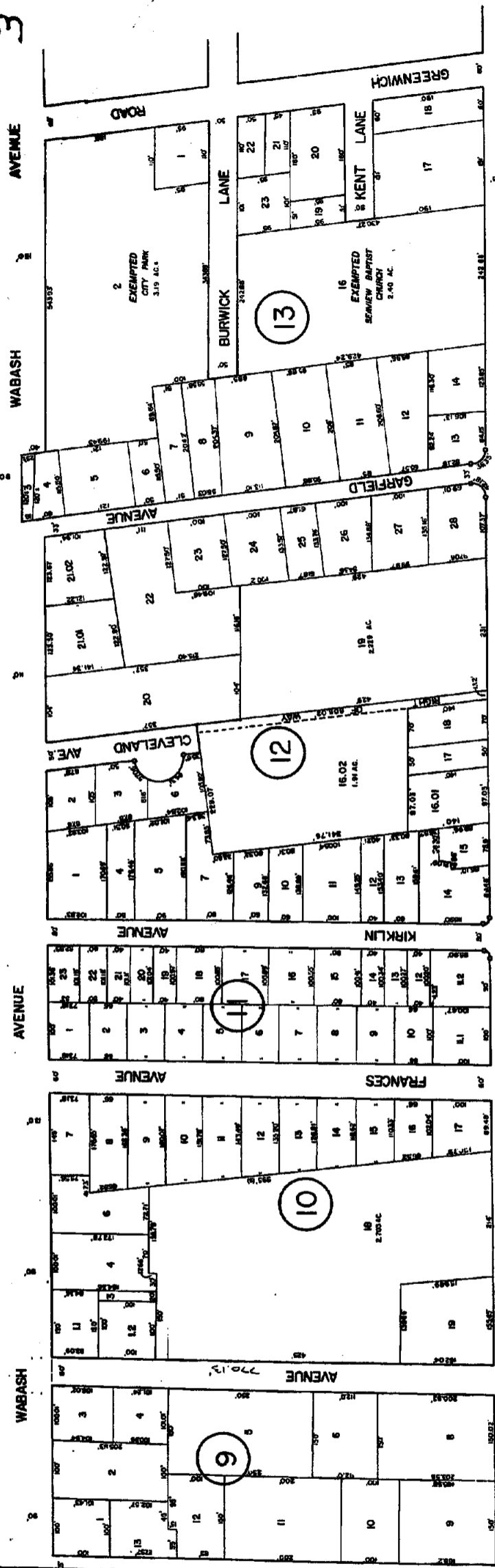


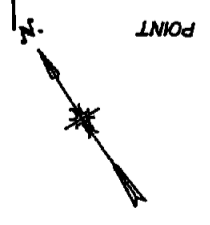
SEE ADJOINING SHEET 2

SEE ADJOINING SHEET 1



PUBLIC UTILITY TAX BUREAU
 DIVISION OF VALUATION
 APPROVED AS A TAX MAP PRESENTED TO THE
 COMMISSIONERS OF CHARTERED TOWNSHIP
 FOR THE PURPOSES OF VALUATION
 JAN 24 1988
 457

TAX ASSESSMENT MAPS
 CITY OF LINWOOD
 ATLANTIC COUNTY, NEW JERSEY
 SCALE 1" = 100'
 JANUARY, 1988
 RONALD J. PRICE, P.E. & L.L.
 HORTONVILLE, NEW JERSEY
 253



WABASH AVENUE
FRANCES AVENUE
KIRKIN AVENUE
CLEVELAND AVENUE
GARFIELD AVENUE
WABASH AVENUE
SHORE ROAD
KENT LANE
BURWICK LANE
GREENWICH ROAD

SEAGARDEN DRIVE
BERKLEY STREET
HIGHLAND COURT
ARBOR COURT WEST
ARBOR COURT EAST
SUNSET AVENUE
MYRTLE AVENUE
SWOODE - LYNNE
IONA
FRANKLIN