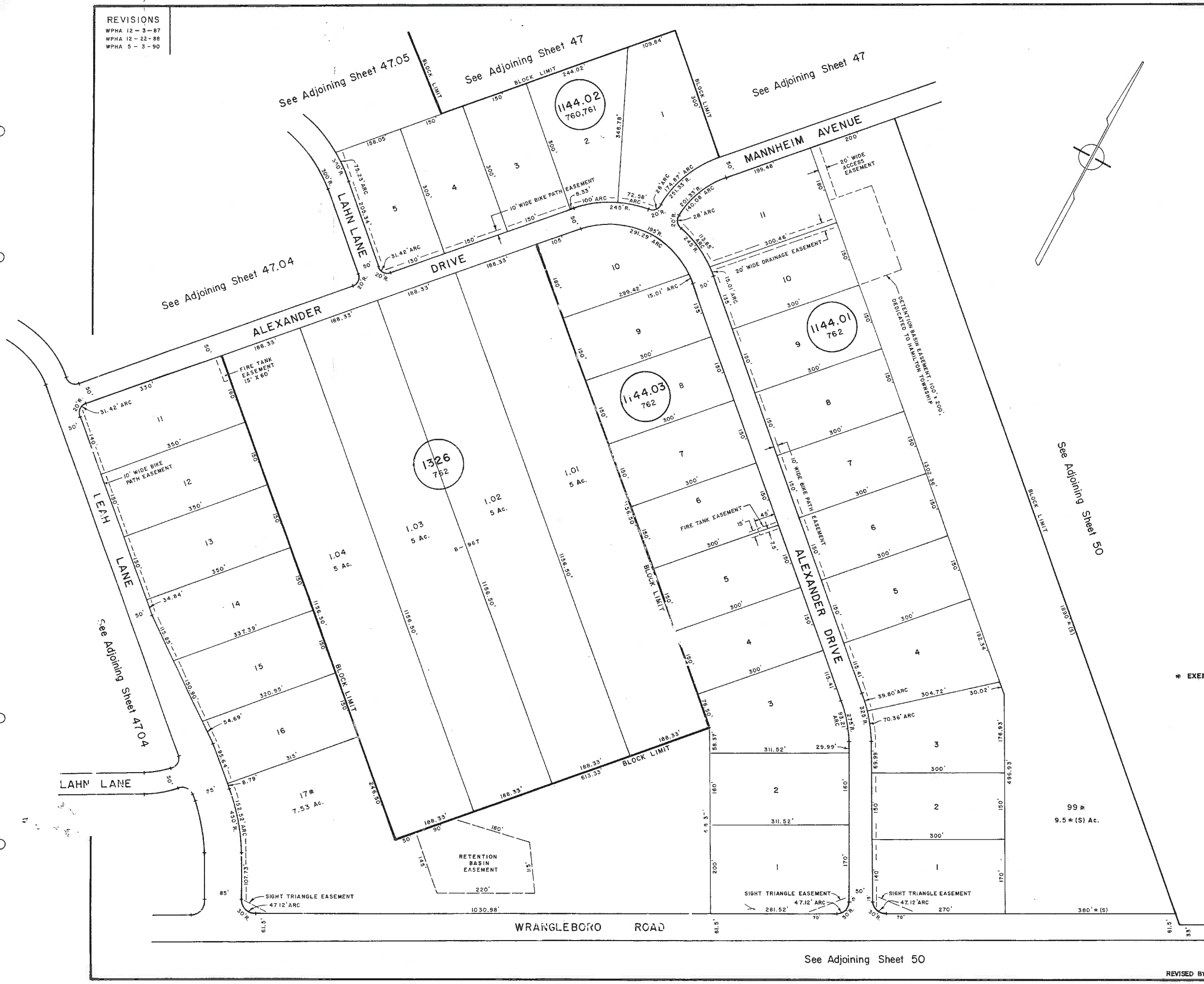


REVISIONS
 WPHA 12 - 3 - 87
 WPHA 12 - 22 - 88
 WPHA 3 - 3 - 90



* EXEMPT TOWNSHIP OF HAMILTON

NEW JERSEY DEPARTMENT OF THE TREASURY
 DIVISION OF TAXATION
 LOCAL PROPERTY AND PUBLIC UTILITY BRANCH
 APPROVED AS A TAX MAP PURSUANT TO THE
 PROVISIONS OF CHAPTER 175, LAWS OF 1913, ETC.
 FOR THE DIRECTOR, DIVISION OF TAXATION
John J. Johnson
 BY: *John J. Johnson* P.E. & L.S.
 DATE: JAN 22 1986 CHIEF, ENGINEERING SECTION
 SERIAL NO. 054

TAX MAP
 TOWNSHIP OF HAMILTON
 ATLANTIC COUNTY, NEW JERSEY
 SCALE: 1" = 100'
 DECEMBER 11, 1985

JOHN R. WALKER
 OCEAN CITY, N. J.
 N. J. LICENSE NO. 10294

See Adjoining Sheet 50

REVISED BY CHURCHILL PC FEB. 2008