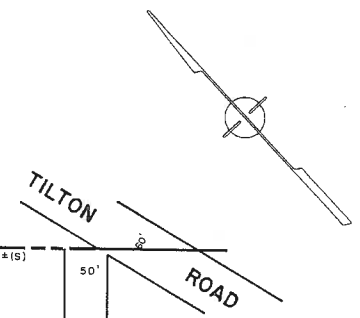
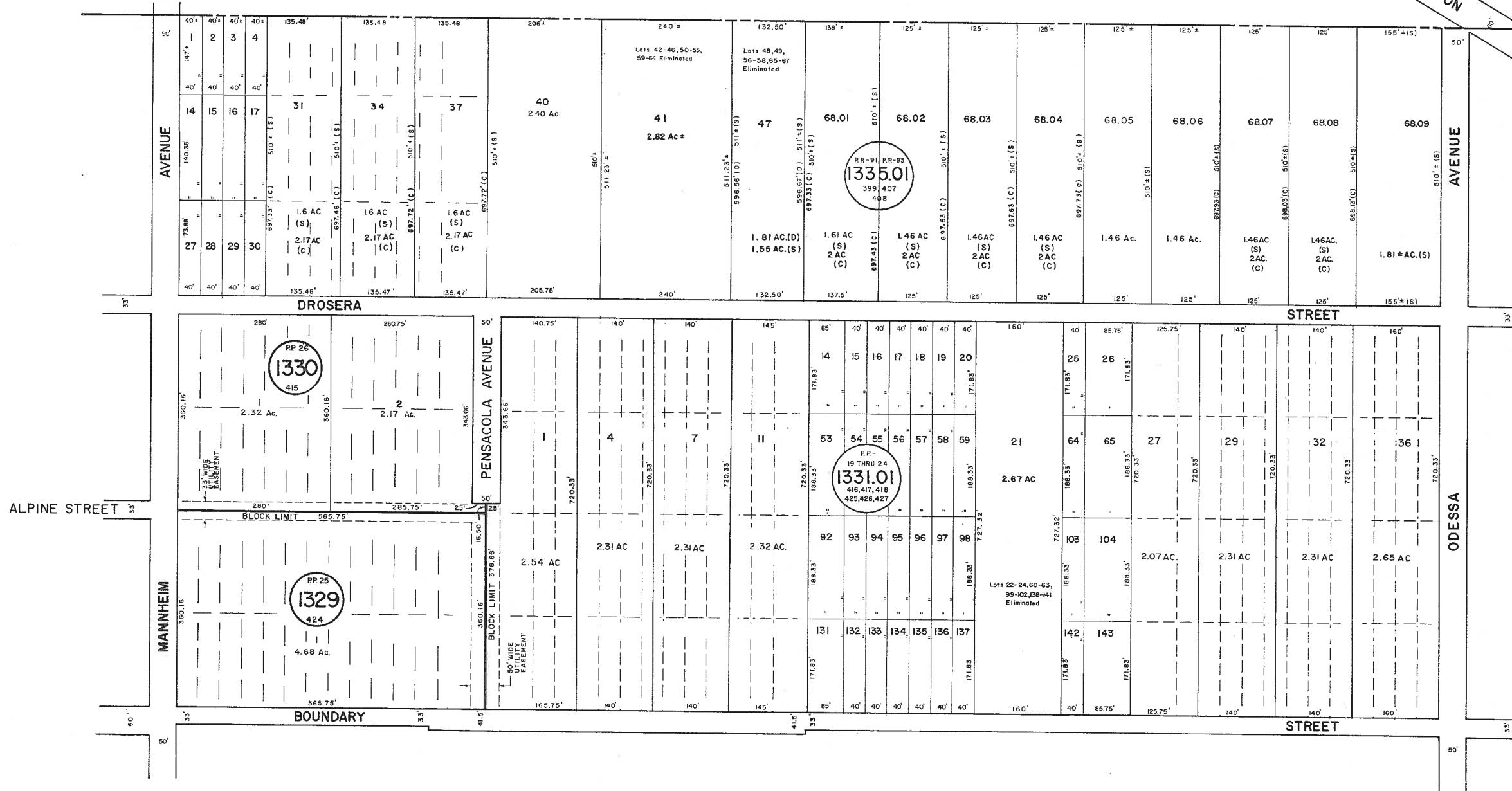


REVISIONS
WPHA 1-15-92
WPHA 4-23-96

ATLANTIC COUNTY
GALLOWAY TOWNSHIP



See Adjoining Sheet 47.03



NOTE: LETTERS "PP" INDICATE BLOCKS ON MAP OF POMONA BY POMONA LAND CO.

NEW JERSEY DEPARTMENT OF THE TREASURY
DIVISION OF TAXATION
LOCAL PROPERTY AND PUBLIC UTILITY BRANCH
APPROVED AS A TAX MAP PURSUANT TO THE
PROVISIONS OF CHAPTER 175, LAWS OF 1913, ETC.
FOR THE DIRECTOR, DIVISION OF TAXATION
[Signature]
BY P.E. & L.S.
LIC. # 15434 CHIEF, ENGINEERING SECTION
DATE JAN 22 1986 SERIAL NO. 654

NEW JERSEY DEPARTMENT OF THE TREASURY
DIVISION OF TAXATION
LOCAL PROPERTY AND PUBLIC UTILITY BRANCH
APPROVED AS A TAX MAP PURSUANT TO THE
PROVISIONS OF CHAPTER 175, LAWS OF 1913, ETC.
FOR THE DIRECTOR, DIVISION OF TAXATION
[Signature]
BY P.E. & L.S.
LIC. # 5000 CHIEF
DATE MAR 16 1987 SERIAL NO. 573

TAX MAP
TOWNSHIP OF HAMILTON
ATLANTIC COUNTY, NEW JERSEY
SCALE: 1" = 100' DATE: JUNE 1, 1977

RONALD J. PRICE
PLEASANTVILLE, N.J.
N.J. LICENSE NO. 13901

See Adjoining Sheet 50.02