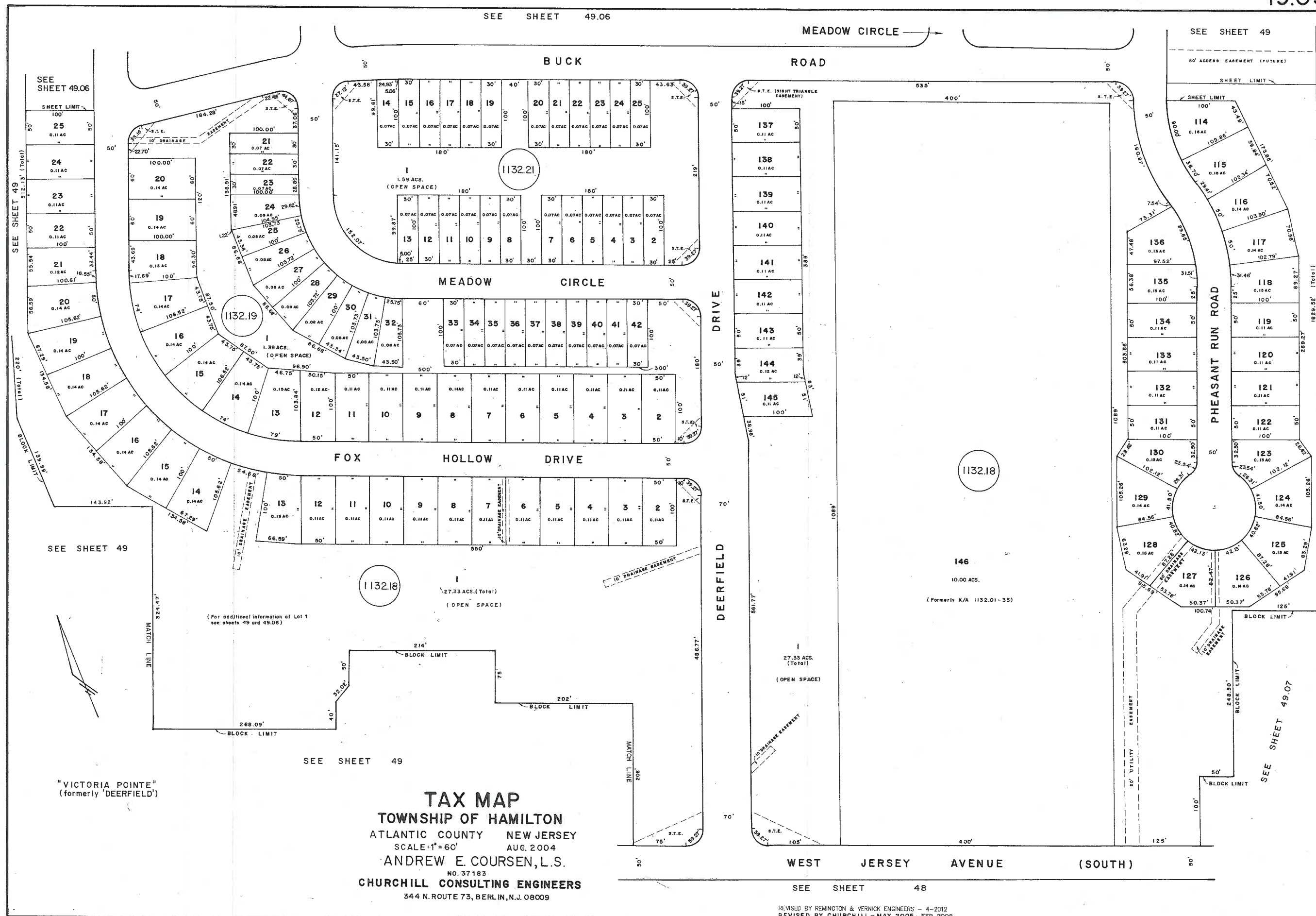


SEE SHEET 49.06

SEE SHEET 49



SEE SHEET 49.06

SEE SHEET 49

SEE SHEET 49

(For additional information of Lot 1 see sheets 49 and 49.06)

SEE SHEET 49

"VICTORIA POINTE" (formerly 'DEERFIELD')

TAX MAP
TOWNSHIP OF HAMILTON
 ATLANTIC COUNTY NEW JERSEY
 SCALE: 1"=60' AUG. 2004
 ANDREW E. COURSEN, L.S.
 NO. 37 183
CHURCHILL CONSULTING ENGINEERS
 344 N. ROUTE 73, BERLIN, N.J. 08009

WEST JERSEY AVENUE (SOUTH)

SEE SHEET 48

REVISED BY REMINGTON & VERNICK ENGINEERS - 4-2012
REVISED BY CHURCHILL-MAY 2005, FEB. 2008