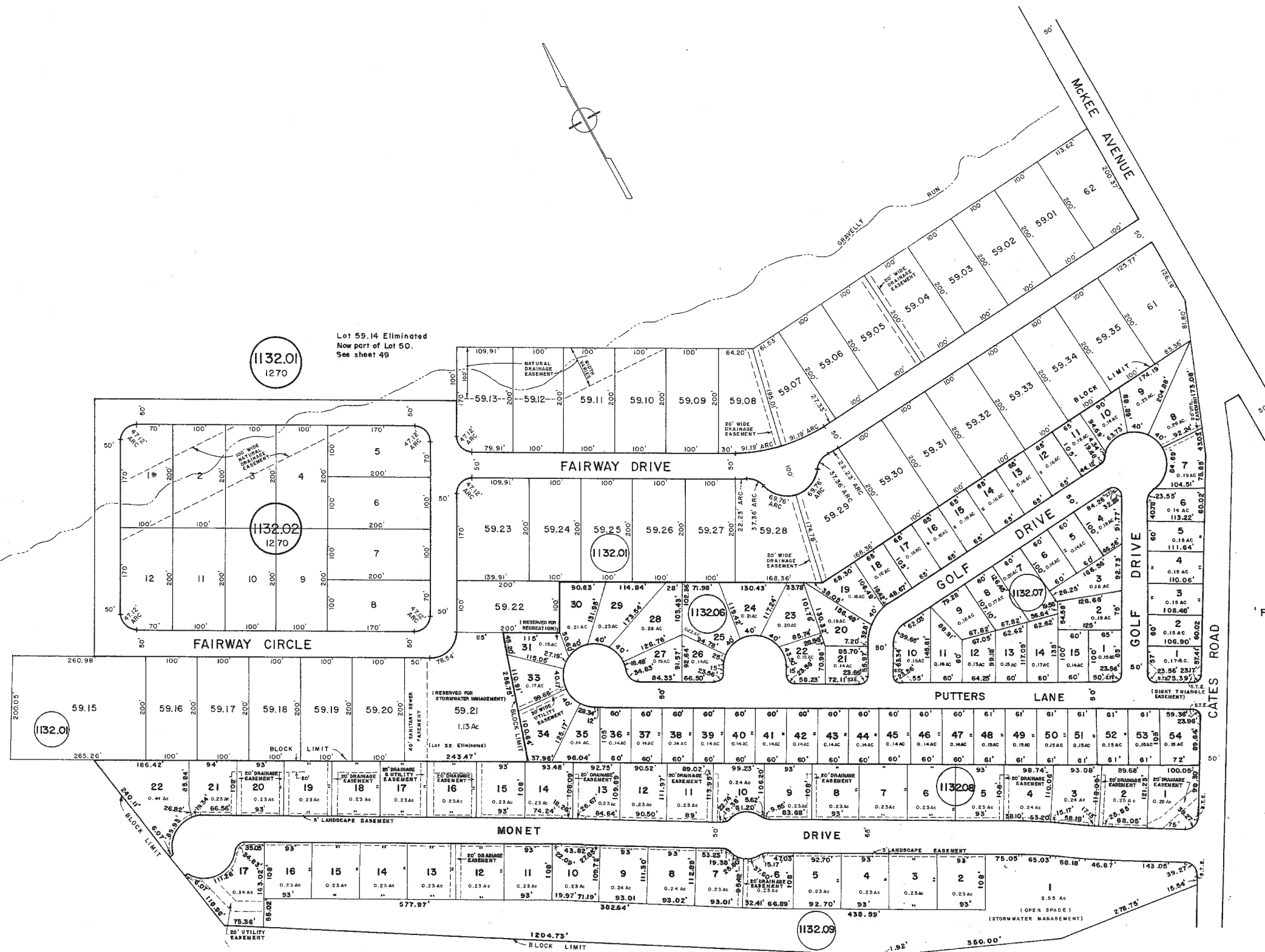


See Adjoining Sheet 49

See Adjoining Sheet 49

See Adjoining Sheet 49



1132.01
1270

Lot 59.14 Eliminated
Now part of Lot 50.
See sheet 49

1132.02
1270

1132.01

1132.07

1132.01

1132.08

1132.09

NEW JERSEY DEPARTMENT OF THE TREASURY
DIVISION OF TAXATION
APPROVED AS A TAX MAP PURSUANT TO THE
PROVISIONS OF CHAPTER 175, LAWS OF 1933, ETC.
FOR THE DIRECTOR, DIVISION OF TAXATION

John R. Walker
LIC. 15434 P.E. & L.S.
DATE: JAN 22 1996 CHIEF, ENGINEERING SECTION
SERIAL NO. 854

'GLEN EYRE PALETTE # 1'

'FAIRWAY PARK' (STONECREST)

TAX MAP
TOWNSHIP OF HAMILTON

ATLANTIC COUNTY, NEW JERSEY
SCALE: 1" = 100' DATE: FEBRUARY 26, 1979

JOHN R. WALKER
OCEAN CITY, N.J.
N.J. LICENSE NO. 10294

* EXEMPT TOWNSHIP OF HAMILTON

DEC. 2003, OCT. 2005, FEB. 2008
REVISED BY CHURCHILL - FEB. 1999, MAY 2001, MAY 2002, DEC. 2002

See Adjoining Sheet 49

WPHA 12-2-85
REVISIONS