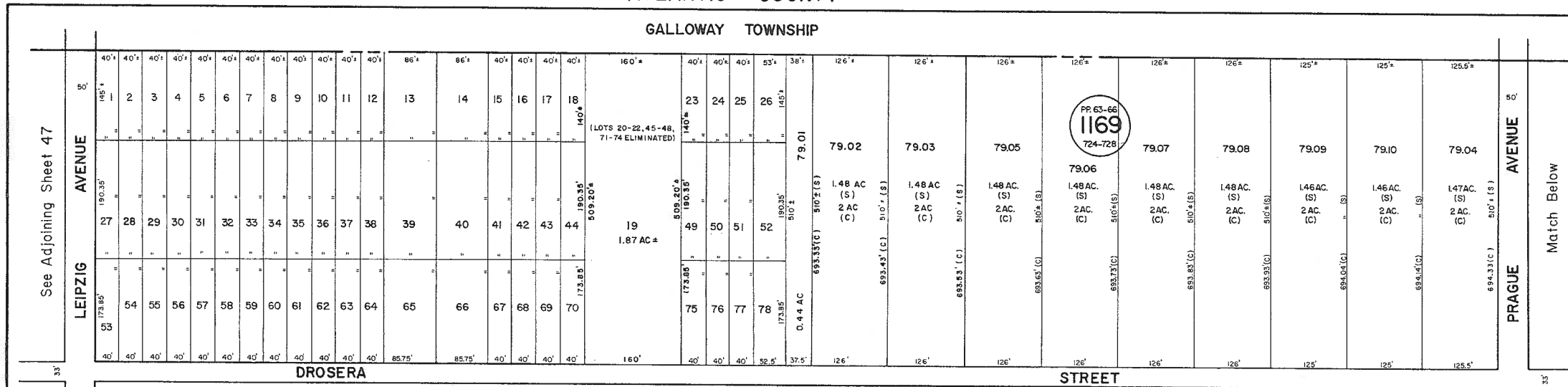
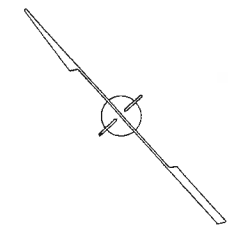


GALLOWAY TOWNSHIP



See Adjoining Sheet 47

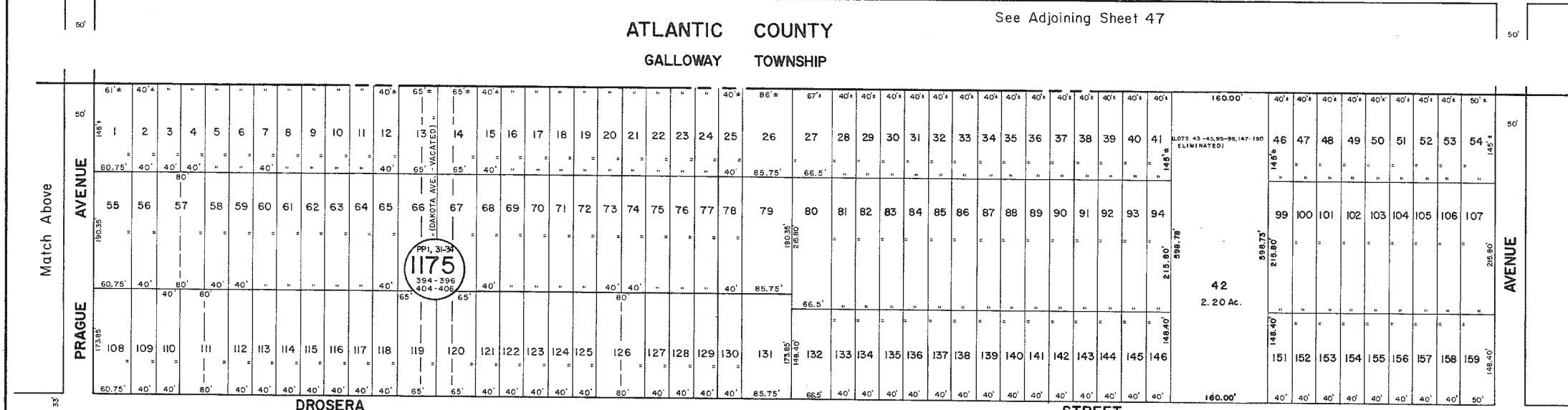
Match Below



ATLANTIC COUNTY

See Adjoining Sheet 47

GALLOWAY TOWNSHIP

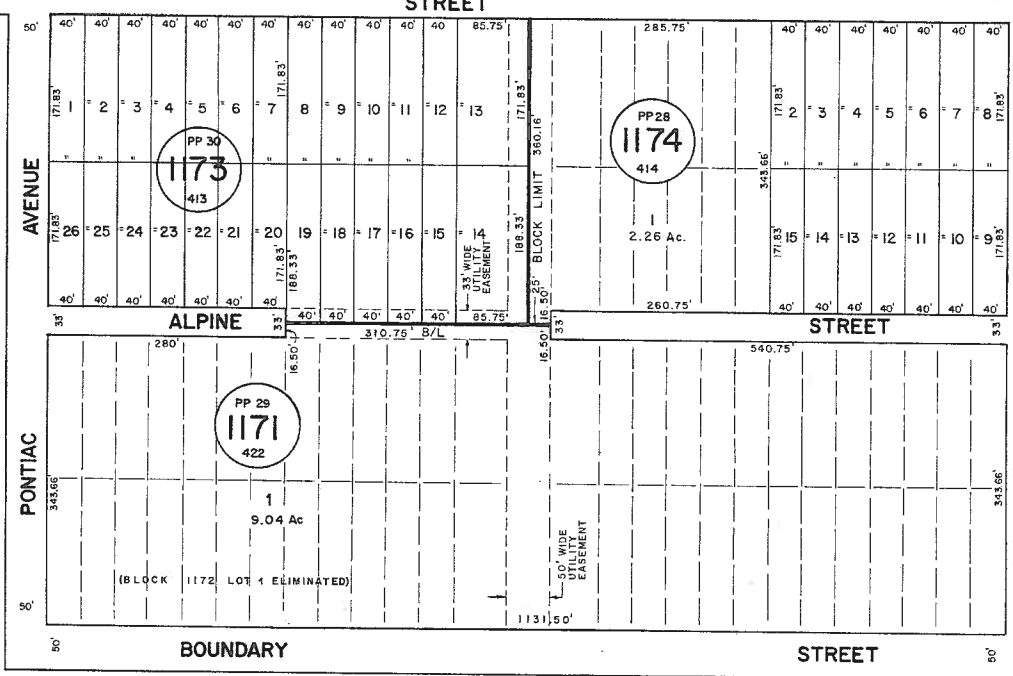


Match Above

Match Below

See Adjoining Sheet 47

See Adjoining Sheet 50.01



LETTERS PP INDICATE BLOCKS ON MAP OF POMONA BY POMONA LAND COMPANY.

NEW JERSEY DEPARTMENT OF THE TREASURY  
DIVISION OF TAXATION  
LOCAL PROPERTY AND PUBLIC UTILITY BRANCH  
APPROVED AS A TAX MAP PURSUANT TO THE  
PROVISIONS OF CHAPTER 175, LAWS OF 1983, ETC.  
FOR THE DIRECTOR, DIVISION OF TAXATION  
By: *[Signature]* P.E. & L.S.  
LIC. #15434 CHIEF, ENGINEERING SECTION  
DATE: JAN 22 1986 SERIAL NO. 854

NEW JERSEY DEPARTMENT OF THE TREASURY  
DIVISION OF TAXATION  
LOCAL PROPERTY AND PUBLIC UTILITY BRANCH  
APPROVED AS A TAX MAP PURSUANT TO THE  
PROVISIONS OF CHAPTER 175, LAWS OF 1983, ETC.  
FOR THE DIRECTOR, DIVISION OF TAXATION  
By: *[Signature]* P.E. & L.S.  
LIC. # 5009 CHIEF  
DATE: MAR 16 1974 SERIAL NO. 573

TAX MAP  
TOWNSHIP OF HAMILTON  
ATLANTIC COUNTY, NEW JERSEY  
SCALE: 1" = 100' DATE: JUNE 1, 1977

RONALD J. PRICE  
PLEASANTVILLE, N.J.  
N.J. LICENSE NO. 15501