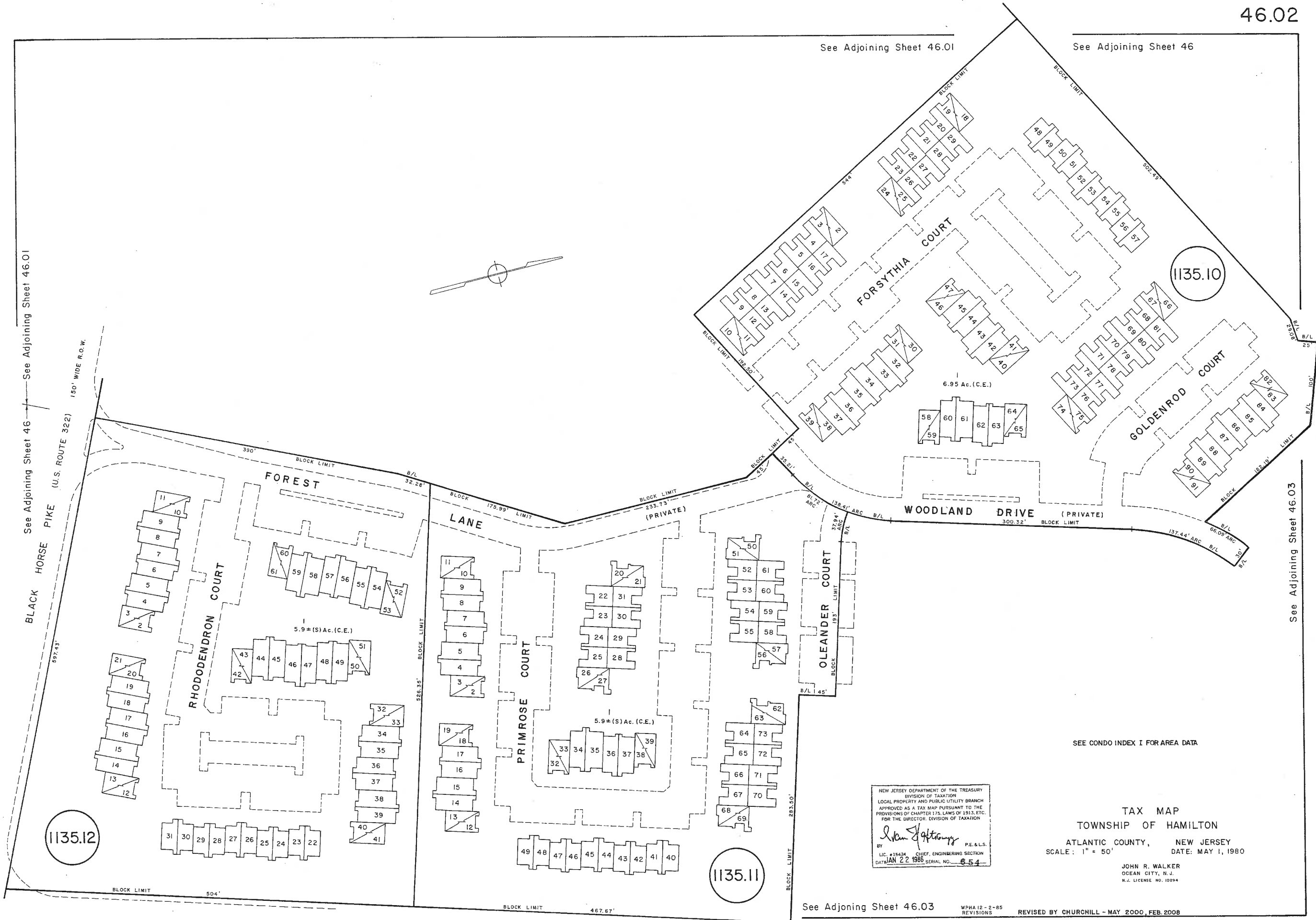


See Adjoining Sheet 46.01

See Adjoining Sheet 46



See Adjoining Sheet 46 — See Adjoining Sheet 46.01

150' WIDE R.O.W.

1135.12

1135.11

1135.10

See Adjoining Sheet 46.03

SEE CONDO INDEX I FOR AREA DATA

NEW JERSEY DEPARTMENT OF THE TREASURY  
 DIVISION OF TAXATION  
 LOCAL PROPERTY AND PUBLIC UTILITY BRANCH  
 APPROVED AS A TAX MAP PURSUANT TO THE  
 PROVISIONS OF CHAPTER 175, LAWS OF 1913, ETC.  
 FOR THE DIRECTOR, DIVISION OF TAXATION

*John R. Walker* P.E. & L.S.  
 BY LIC. #15434 CHIEF, ENGINEERING SECTION  
 DATE JAN 22 1985 SERIAL NO. 654

TAX MAP  
 TOWNSHIP OF HAMILTON  
 ATLANTIC COUNTY, NEW JERSEY  
 SCALE: 1" = 50' DATE: MAY 1, 1980

JOHN R. WALKER  
 OCEAN CITY, N.J.  
 N.J. LICENSE NO. 10294

See Adjoining Sheet 46.03

WPHA 12-2-85 REVISIONS REVISED BY CHURCHILL - MAY 2000, FEB. 2008