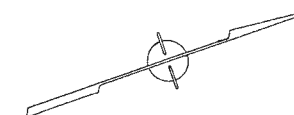
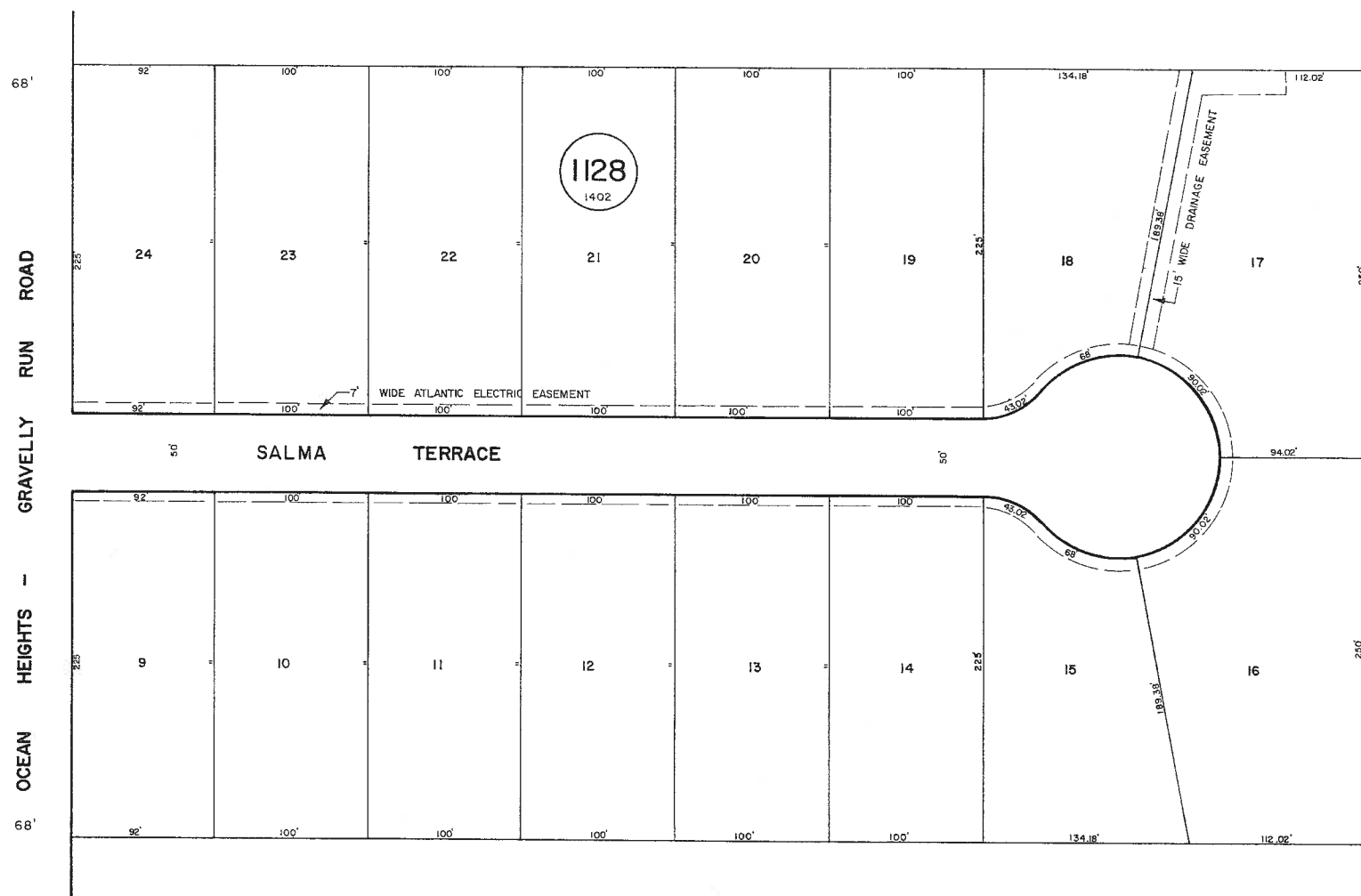


REVISIONS
WPHA 11-10-88

See Adjoining Sheet 44

See Adjoining Sheet 43.02



See Adjoining Sheet 44

NEW JERSEY DEPARTMENT OF THE TREASURY
DIVISION OF TAXATION
LOCAL PROPERTY AND PUBLIC UTILITY BRANCH
APPROVED AS A TAX MAP PURSUANT TO THE
PROVISIONS OF CHAPTER 175, LAWS OF 1913, ETC.
FOR THE DIRECTOR, DIVISION OF TAXATION

BY *[Signature]* P.E. & L.S.
LIC. #25434 CHIEF, ENGINEERING SECTION
JAN 22 1988 SERIAL NO. 854

NEW JERSEY DEPARTMENT OF THE TREASURY
DIVISION OF TAXATION
LOCAL PROPERTY AND PUBLIC UTILITY BRANCH
APPROVED AS A TAX MAP PURSUANT TO THE
PROVISIONS OF CHAPTER 175, LAWS OF 1913, ETC.
FOR THE DIRECTOR, DIVISION OF TAXATION

BY *[Signature]* P.E. & L.S.
LIC. # 5009 CHIEF
MAR 16 1977 SERIAL NO. 573

TAX MAP
TOWNSHIP OF HAMILTON
ATLANTIC COUNTY, NEW JERSEY
SCALE : 1" = 50' DATE: JUNE 1, 1977

RONALD J. PRICE
PLEASANTVILLE, N.J.
N.J. LICENSE NO 13901

See Adjoining Sheet 44