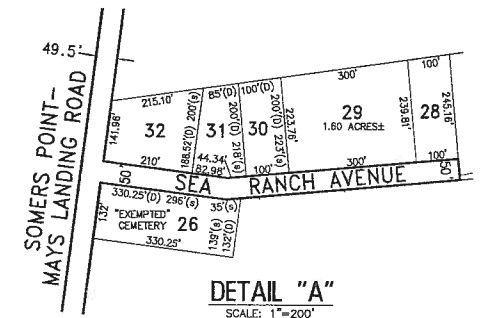
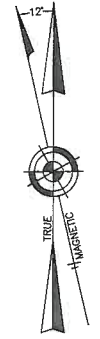
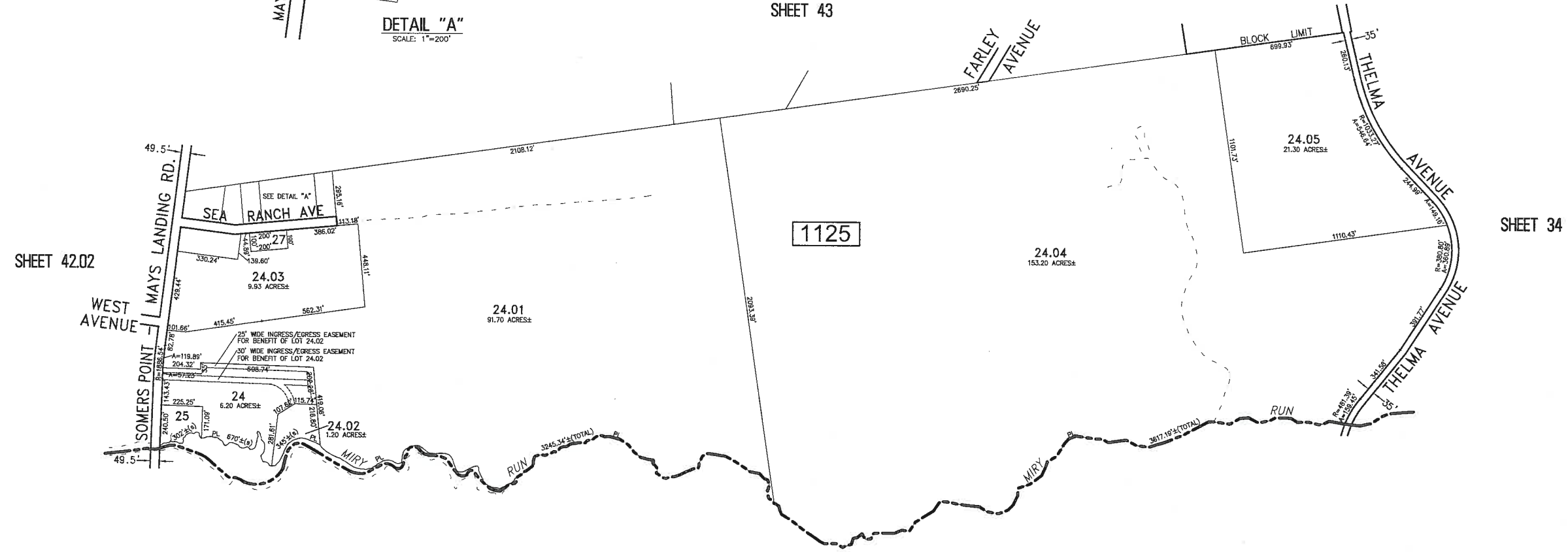


NO.	DESCRIPTION	DATE

NOTE:
THIS SHEET HAS BEEN DRAWN USING COMPUTER AIDED DRAFTING/DESIGN (CAD/D) AND COORDINATE GEOMETRY (COGO).



SHEET 43



TOWNSHIP OF EGG HARBOR
COUNTY OF ATLANTIC

TAX MAP
TOWNSHIP OF HAMILTON
ATLANTIC COUNTY NEW JERSEY
SCALE: 1" = 300' DATE: 7-17-2014
CHARLES E. ADAMSON NJ PROFESSIONAL LAND SURVEYOR L.E. NO. 42827
REMINGTON, VERNICK & WALBERG ENGINEERS
645 N MAIN STREET, PLEASANTVILLE, N.J. 08232
(609) 648-7800, FAX (609) 648-7076
WEB SITE ADDRESS: WWW.RVW.COM