

REVISIONS

WPHA 11-18-87
WPHA 2-17-89

DATE	L.S. NAME	LIC. NO.
12-31-97	MARTIN F. TIRRELLA	27477
11-15-98	MARTIN F. TIRRELLA	27477
7-20-11	CRAIG F. REMINGTON	23824

See Adjoining Sheet 35

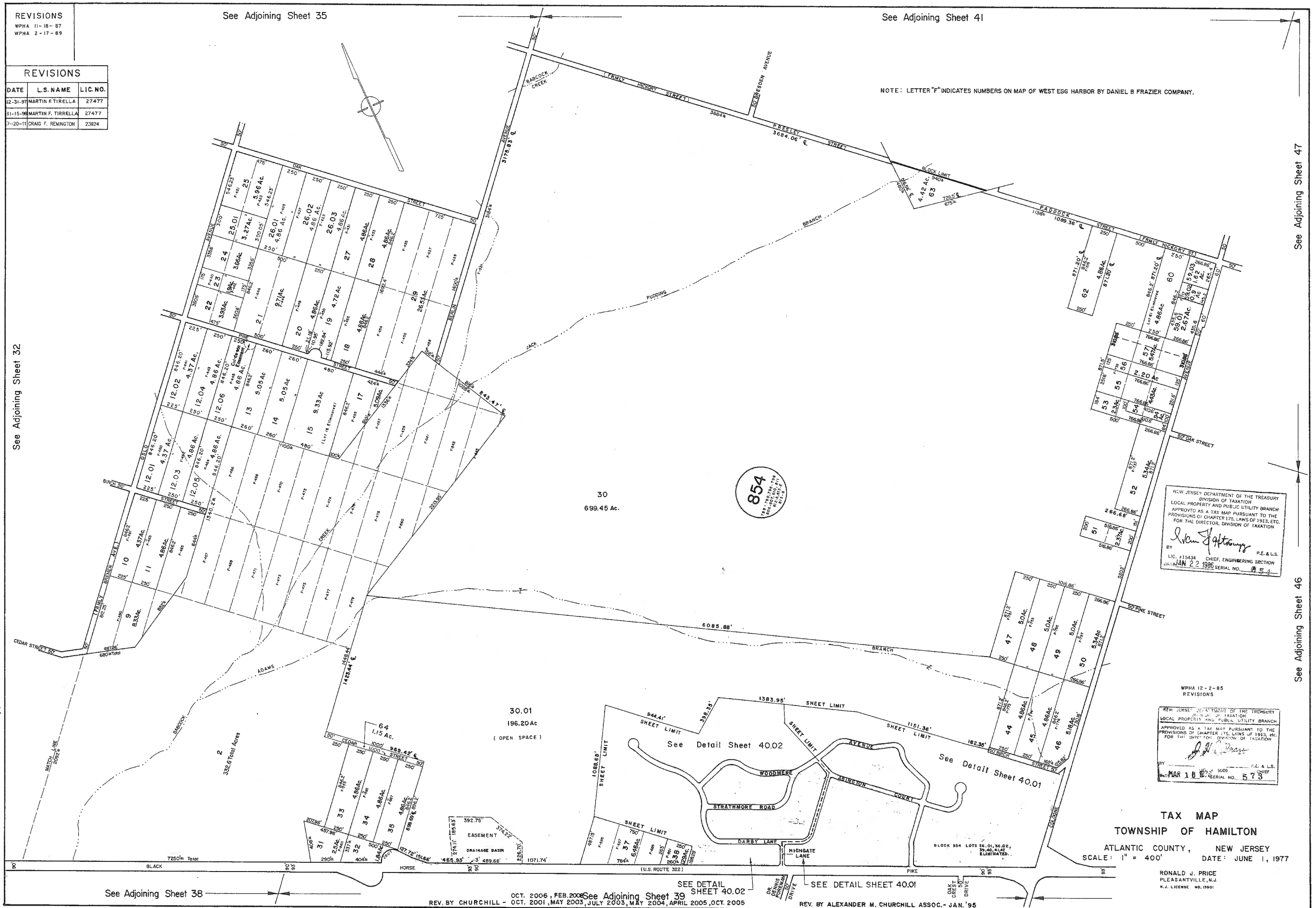
See Adjoining Sheet 41

NOTE: LETTER "F" INDICATES NUMBERS ON MAP OF WEST EGG HARBOR BY DANIEL B. FRAZIER COMPANY.

See Adjoining Sheet 32

See Adjoining Sheet 47

See Adjoining Sheet 46



NEW JERSEY DEPARTMENT OF THE TREASURY
DIVISION OF TAXATION
LOCAL PROPERTY AND PUBLIC UTILITY BRANCH
APPROVED AS A TAX MAP PURSUANT TO THE
PROVISIONS OF CHAPTER 175, LAWS OF 1993, ETC.
FOR THE DIRECTOR, DIVISION OF TAXATION

William J. Hoffmann
BY
LIC. #15434 CHIEF, ENGINEERING SECTION P.E. & L.S.
DATE: JAN 22 1986 SERIAL NO. 1854

WPHA 12-2-85
REVISIONS

NEW JERSEY DEPARTMENT OF THE TREASURY
DIVISION OF TAXATION
LOCAL PROPERTY AND PUBLIC UTILITY BRANCH
APPROVED AS A TAX MAP PURSUANT TO THE
PROVISIONS OF CHAPTER 175, LAWS OF 1993, ETC.
FOR THE DIRECTOR, DIVISION OF TAXATION

Ronald J. Price
BY
LIC. # 5000 CHIEF, ENGINEERING SECTION P.E. & L.S.
DATE: MAR 18 1977 SERIAL NO. 573

TAX MAP
TOWNSHIP OF HAMILTON
ATLANTIC COUNTY, NEW JERSEY
SCALE: 1" = 400' DATE: JUNE 1, 1977

RONALD J. PRICE
PLEASANTVILLE, N.J.
N.J. LICENSE NO. 15901

See Adjoining Sheet 38

SEE DETAIL SHEET 39
SEE DETAIL SHEET 40.0
SEE DETAIL SHEET 40.01
SEE DETAIL SHEET 40.02

REV. BY CHURCHILL - OCT. 2006, FEB. 2008, OCT. 2001, MAY 2003, JULY 2003, MAY 2004, APRIL 2005, OCT. 2005

SEE DETAIL SHEET 40.01
REV. BY ALEXANDER M. CHURCHILL ASSOC. - JAN. '95