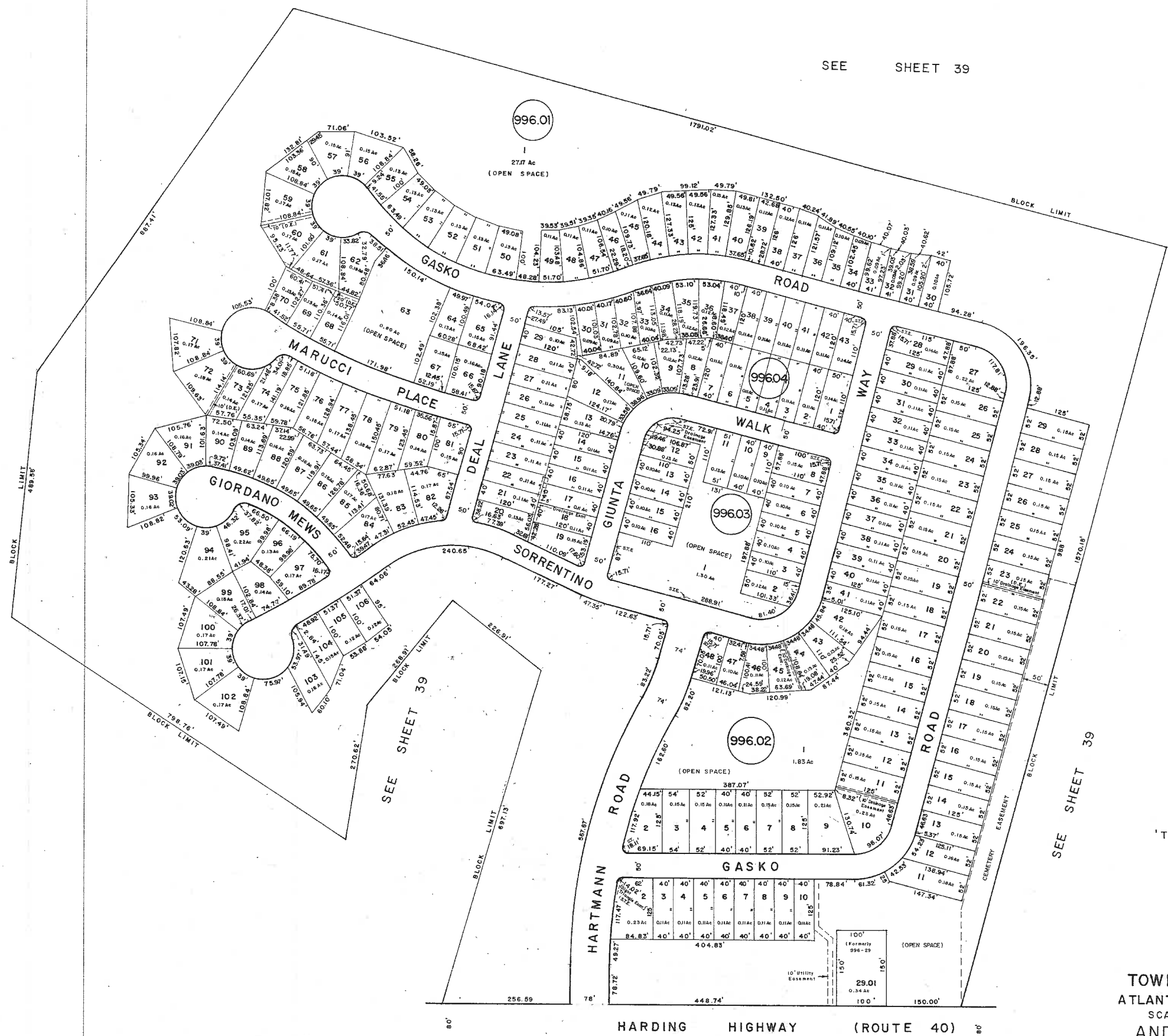


SEE SHEET 39



'TAVISTOCK'
Section 1,2,3,4

TAX MAP
 TOWNSHIP OF HAMILTON
 ATLANTIC COUNTY NEW JERSEY
 SCALE: 1"=100' MAY, 2003
 ANDREW E. COURSEN, L.S.
 NO. 37183
CHURCHILL CONSULTING ENGINEERS
 344 N. ROUTE 73, BERLIN, N.J. 08009

REVISED BY CHURCHILL - SEPT. 2004, JULY 2005, NOV. 2005

SEE SHEET 39