

VIENNA AVE. (50' WIDE)

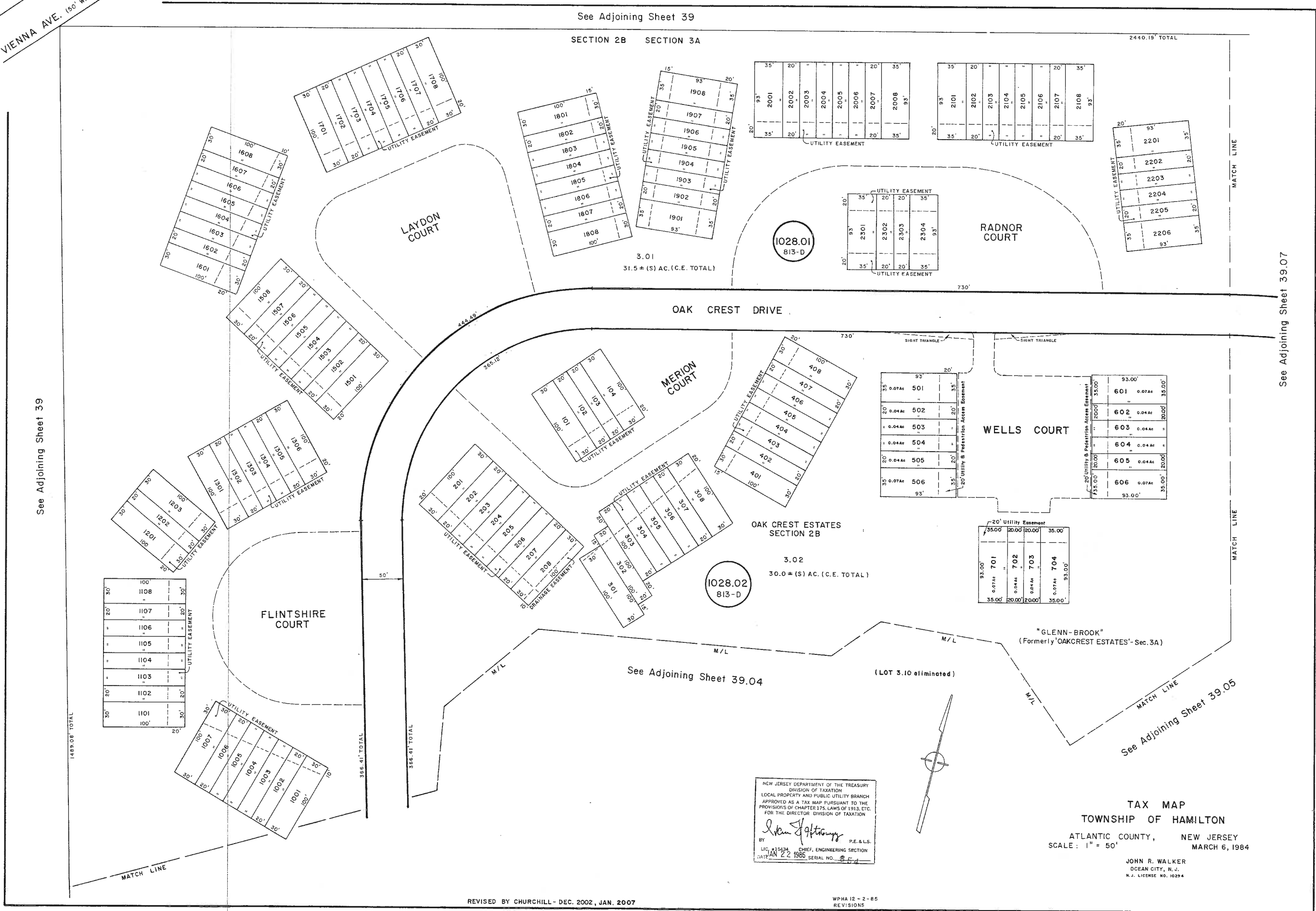
See Adjoining Sheet 39

SECTION 2B SECTION 3A

2440.19' TOTAL

See Adjoining Sheet 39

See Adjoining Sheet 39.07



NEW JERSEY DEPARTMENT OF THE TREASURY  
 DIVISION OF TAXATION  
 LOCAL PROPERTY AND PUBLIC UTILITY BRANCH  
 APPROVED AS A TAX MAP PURSUANT TO THE  
 PROVISIONS OF CHAPTER 175, LAWS OF 1913, ETC.  
 FOR THE DIRECTOR, DIVISION OF TAXATION

*John R. Walker*  
 P.E. & L.S.  
 LIC. # 15434 CHIEF, ENGINEERING SECTION  
 DATE JAN 22 1980 SERIAL NO. 2872

TAX MAP  
 TOWNSHIP OF HAMILTON  
 ATLANTIC COUNTY, NEW JERSEY  
 SCALE: 1" = 50'  
 MARCH 6, 1984

JOHN R. WALKER  
 OCEAN CITY, N.J.  
 N.J. LICENSE NO. 10294

REVISED BY CHURCHILL - DEC. 2002, JAN. 2007

WPHA 12 - 2 - 85  
 REVISIONS