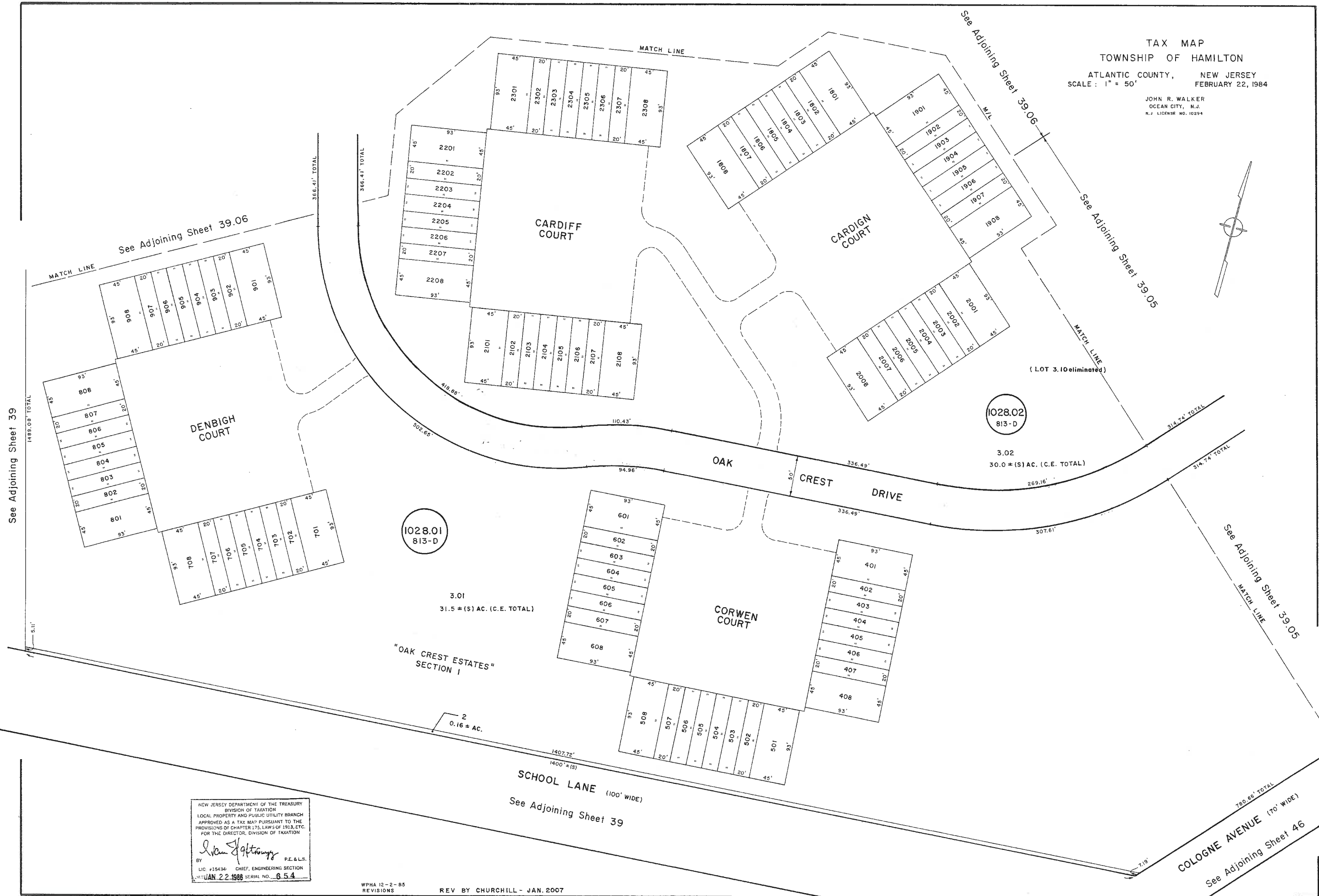
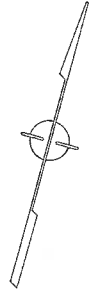


TAX MAP
 TOWNSHIP OF HAMILTON
 ATLANTIC COUNTY, NEW JERSEY
 SCALE: 1" = 50'
 FEBRUARY 22, 1984
 JOHN R. WALKER
 OCEAN CITY, N.J.
 N.J. LICENSE NO. 10294



See Adjoining Sheet 39

See Adjoining Sheet 39.06

See Adjoining Sheet 39.06

See Adjoining Sheet 39.05

See Adjoining Sheet 39.05

See Adjoining Sheet 46

1028.01
813-D

3.01
31.5 ± (S) AC. (C.E. TOTAL)

"OAK CREST ESTATES"
SECTION 1

2
0.16 ± AC.

1028.02
813-D

3.02
30.0 ± (S) AC. (C.E. TOTAL)

(LOT 3.10 eliminated)

NEW JERSEY DEPARTMENT OF THE TREASURY
 DIVISION OF TAXATION
 LOCAL PROPERTY AND PUBLIC UTILITY BRANCH
 APPROVED AS A TAX MAP PURSUANT TO THE
 PROVISIONS OF CHAPTER 175, LAWS OF 1981, ETC.
 FOR THE DIRECTOR, DIVISION OF TAXATION
 BY *John J. Hartung* P.E. & L.S.
 LIC #15436 CHIEF, ENGINEERING SECTION
 JAN 22 1986 SERIAL NO. 654

WPHA 12-2-85
 REVISIONS
 REV BY CHURCHILL - JAN. 2007