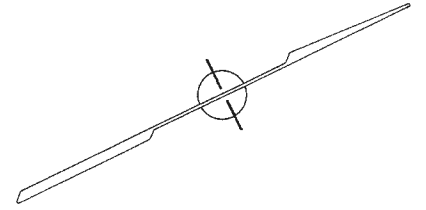
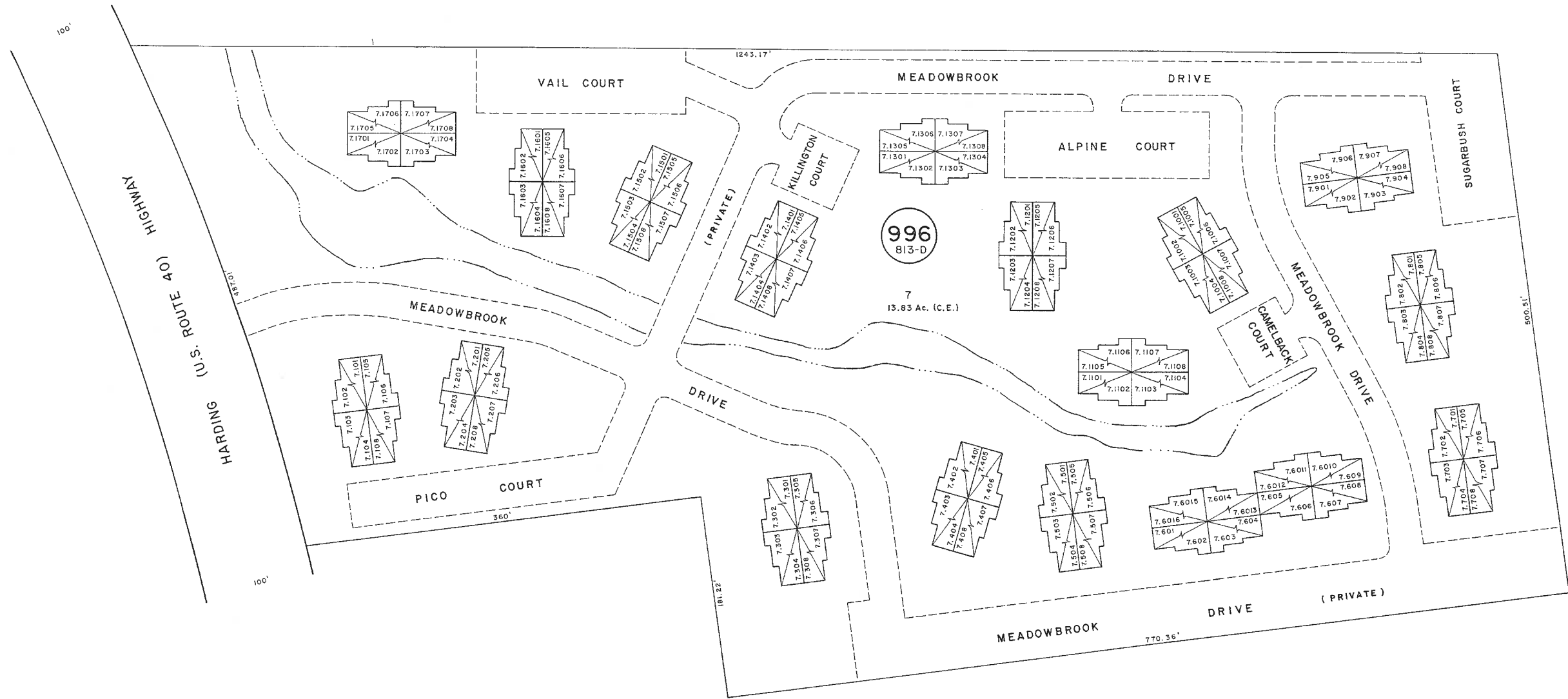


See Adjoining Sheet 38



See Adjoining Sheet 37



See Adjoining Sheet 38

NOTE:
EVEN NUMBERS = SECOND FLOOR
ODD NUMBERS = FIRST FLOOR

SEE CONDO INDEX II FOR AREA DATA

NEW JERSEY DEPARTMENT OF THE TREASURY
DIVISION OF TAXATION
LOCAL PROPERTY AND PUBLIC UTILITY BRANCH
APPROVED AS A TAX MAP PURSUANT TO THE
PROVISIONS OF CHAPTER 173, LAWS OF 1983, ETC.
FOR THE DIRECTOR, DIVISION OF TAXATION

John R. Walker
BY: P.E. & L.S.
L.I.C. #15434 CHIEF, ENGINEERING SECTION
DATE: JAN 22 1986 SERIAL NO. 8-5-4

TAX MAP
TOWNSHIP OF HAMILTON
ATLANTIC COUNTY, NEW JERSEY
SCALE: 1" = 50'
NOVEMBER 11, 1980

JOHN R. WALKER
OCEAN CITY, N.J.
N.J. LICENSE NO. 10284