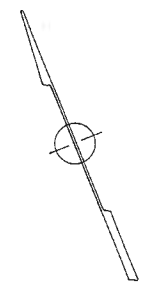
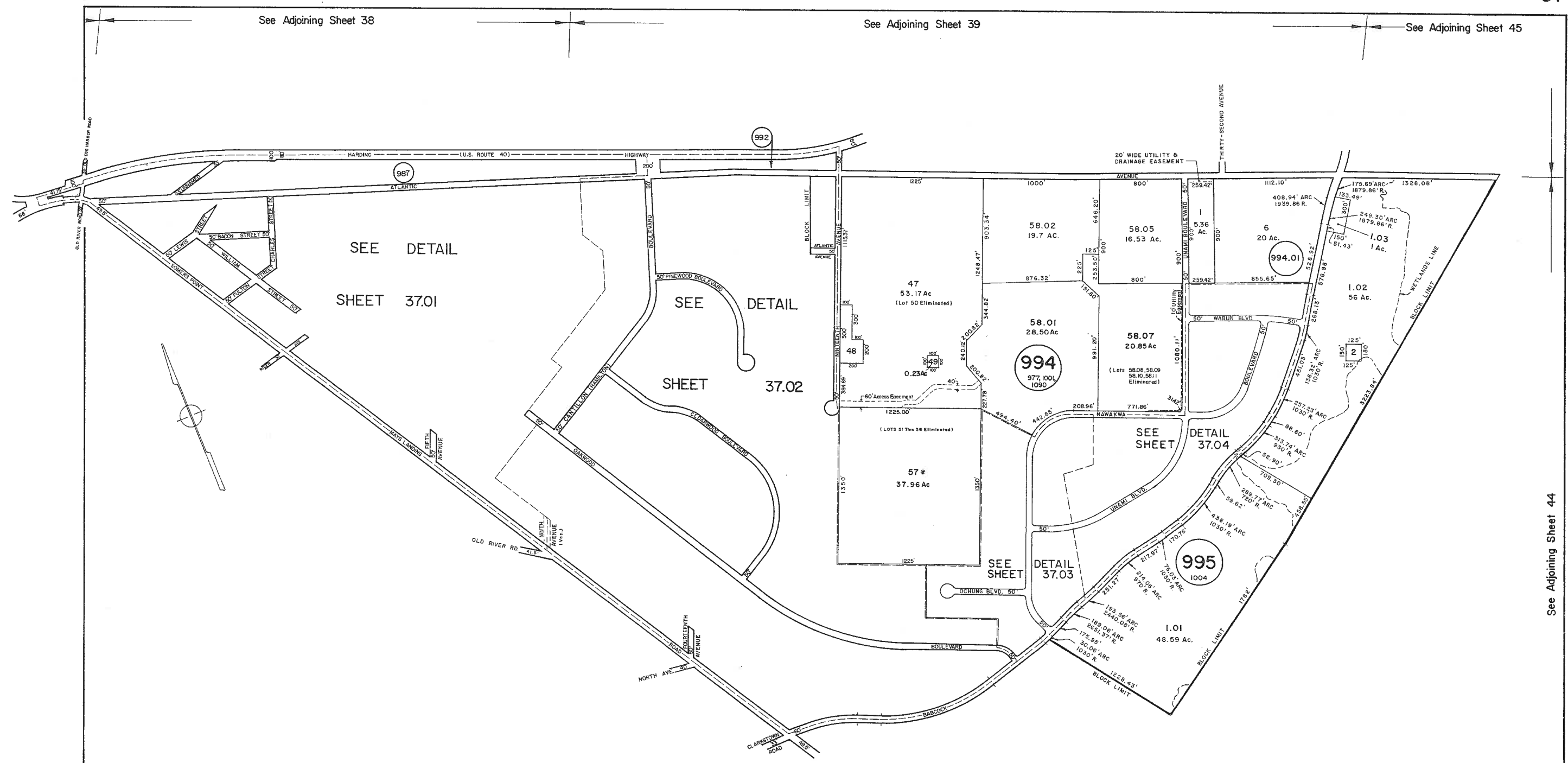


See Adjoining Sheet 38

See Adjoining Sheet 39

See Adjoining Sheet 45



SEE DETAIL SHEET 37.01

SEE DETAIL SHEET 37.02

SEE SHEET DETAIL 37.04

SEE SHEET DETAIL 37.03

* EXEMPT TOWNSHIP OF HAMILTON

DATE	L.S. NAME	LIC. No.
11-18-97	MARTIN E TIRELLA	LS27477

REVISIONS	REVISIONS
WPHA 12 - 15 - 93	
WPHA 12 - 3 - 92	
WPHA 4 - 27 - 90	
WPHA 12 - 12 - 88	
WPHA 11-29-84	
WPTH OCT 1982	
WPTH DEC 1981	

FEB. 2008
 MAY 2003
 MAR. 2002
 AUG. 2001
 See Adjoining Sheet 36
 REVISED BY CHURCHILL - DEC., 2000

NEW JERSEY DEPARTMENT OF THE TREASURY
 DIVISION OF TAXATION
 LOCAL PROPERTY AND PUBLIC UTILITY BRANCH
 APPROVED AS A TAX MAP PURSUANT TO THE PROVISIONS OF CHAPTER 175, LAWS OF 1913, ETC. FOR THE DIRECTOR, DIVISION OF TAXATION
 BY *[Signature]* P.E. & L.S.
 LIC. #15436 CHIEF, ENGINEERING SECTION
 JAN 22 1998 SERIAL NO. 654

NEW JERSEY DEPARTMENT OF THE TREASURY
 DIVISION OF TAXATION
 LOCAL PROPERTY AND PUBLIC UTILITY BRANCH
 APPROVED AS A TAX MAP PURSUANT TO THE PROVISIONS OF CHAPTER 175, LAWS OF 1913, ETC. FOR THE DIRECTOR, DIVISION OF TAXATION
 BY *[Signature]* P.E. & L.S.
 LIC. #15436 CHIEF, ENGINEERING SECTION
 JAN 18 1998 SERIAL NO. 578

TAX MAP
TOWNSHIP OF HAMILTON
 ATLANTIC COUNTY, NEW JERSEY
 SCALE: 1" = 400' DATE: JUNE 1, 1977

RONALD J. PRICE
 PLEASANTVILLE, N.J.
 N.J. LICENSE NO. 15901

See Adjoining Sheet 42

See Adjoining Sheet 43

See Adjoining Sheet 44