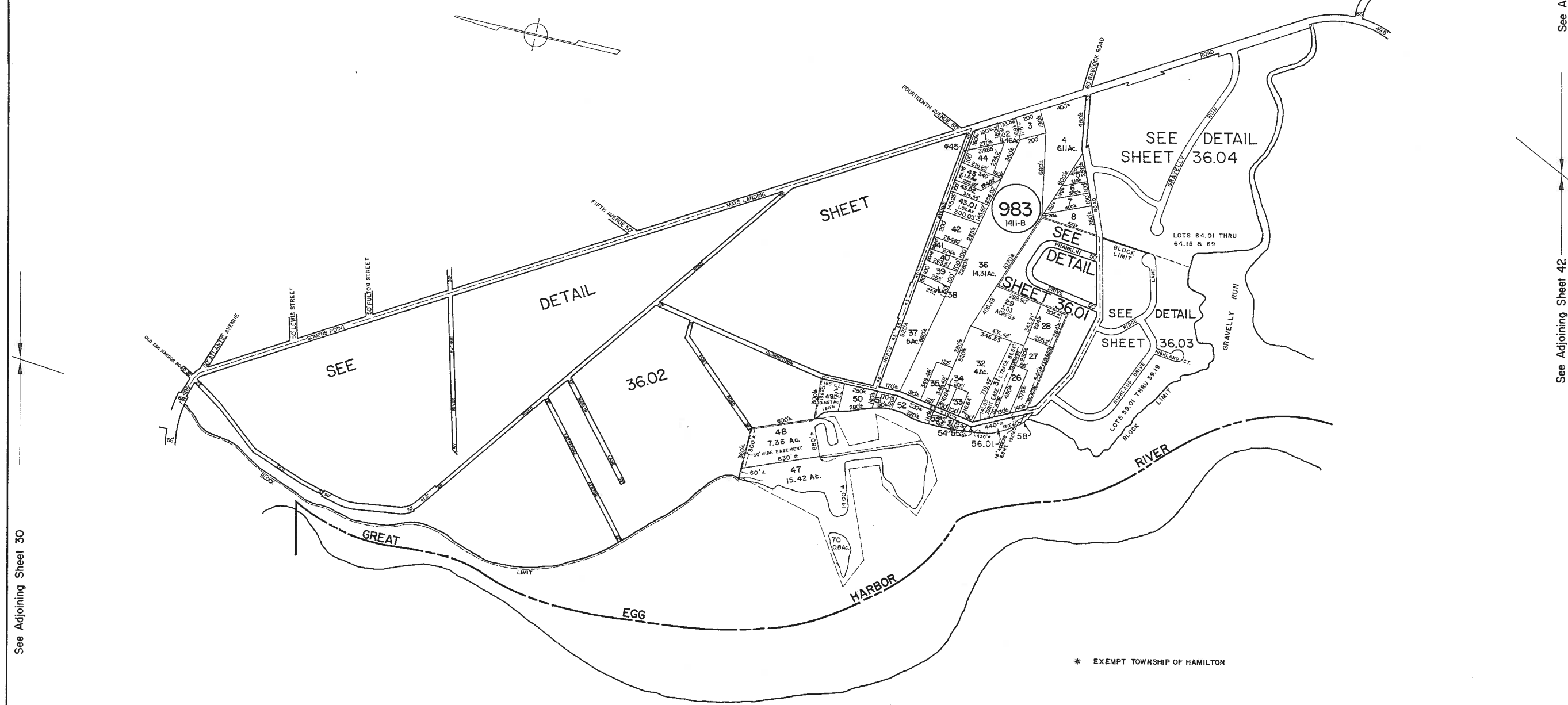


REVISIONS		
DATE	L.S. NAME	LIC. No.
6/20/97	KENNETH P. FRANK	L.S. 36727
12/12/2008	CRAIG F. REMINGTON	23924
6/3/2010	CRAIG F. REMINGTON	23924

See Adjoining Sheet 37

See Adjoining Sheet 44



See Adjoining Sheet 30

See Adjoining Sheet 43

See Adjoining Sheet 42

WEYMOUTH TOWNSHIP
ATLANTIC COUNTY

NEW JERSEY DEPARTMENT OF THE TREASURY
DIVISION OF TAXATION
LOCAL PROPERTY AND PUBLIC UTILITY BRANCH
APPROVED AS A TAX MAP PURSUANT TO THE
PROVISIONS OF CHAPTER 175, LAWS OF 1913, ETC.
FOR THE DIRECTOR, DIVISION OF TAXATION

[Signature]
P.E. & L.S.
LIC. #15438 CHIEF, ENGINEERING SECTION
DATE: JAN 22 1966 SERIAL NO. 654

NEW JERSEY DEPARTMENT OF THE TREASURY
DIVISION OF TAXATION
LOCAL PROPERTY AND PUBLIC UTILITY BRANCH
APPROVED AS A TAX MAP PURSUANT TO THE
PROVISIONS OF CHAPTER 175, LAWS OF 1913, ETC.
FOR THE DIRECTOR, DIVISION OF TAXATION

[Signature]
P.E. & L.S.
LIC. # 5009 SERIAL NO. 578
DATE: MAY 1 8 1978

TAX MAP
TOWNSHIP OF HAMILTON
ATLANTIC COUNTY, NEW JERSEY
SCALE: 1" = 400' DATE: JUNE 1, 1977

RONALD J. PRICE
PLEASANTVILLE, N.J.
N.J. LICENSE NO. 13901

REV. BY CHURCHILL - SEPT. 2001, MAR. 2003, MAY 2003, FEB. 2008

WPHA 12-2-85
REVISIONS