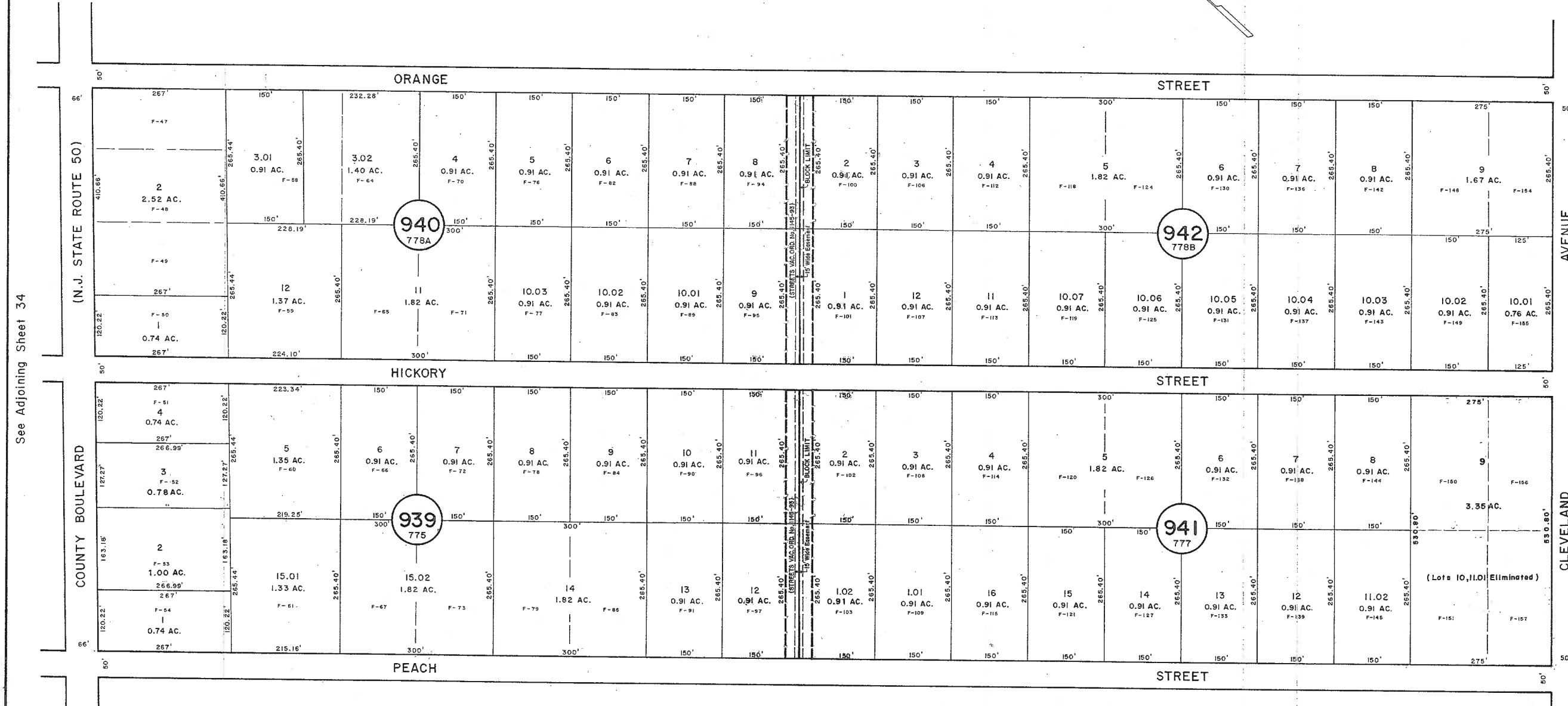
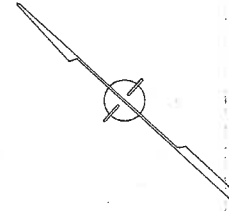


See Adjoining Sheet 35



See Adjoining Sheet 34

See Adjoining Sheet 35

See Adjoining Sheet 35

NEW JERSEY DEPARTMENT OF THE TREASURY
 DIVISION OF TAXATION
 LOCAL PROPERTY AND PUBLIC UTILITY BRANCH
 APPROVED AS A TAX MAP PURSUANT TO THE
 PROVISIONS OF CHAPTER 175, LAWS OF 1913, ETC.
 FOR THE DIRECTOR, DIVISION OF TAXATION

John R. Walker
 BY: JOHN R. WALKER, P.E. & L.S.
 LIC. #12434 CHIEF, ENGINEERING SECTION
 DATE: JAN 22 1988 SERIAL NO. 654

TAX MAP
TOWNSHIP OF HAMILTON
 ATLANTIC COUNTY, NEW JERSEY
 SCALE: 1" = 100' DATE: JANUARY 23, 1981

JOHN R. WALKER
 OCEAN CITY, N.J.
 N.J. LICENSE NO. 10294

WPHA 4-7-86 REVISIONS

REVISED BY REMINGTON & VERNICK ENGINEERS - 5-5-2011
REV. BY CHURCHILL - OCT. 1999, MAR. 2000, APRIL 2007