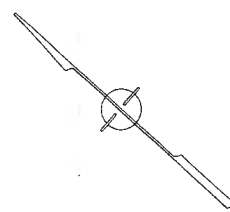
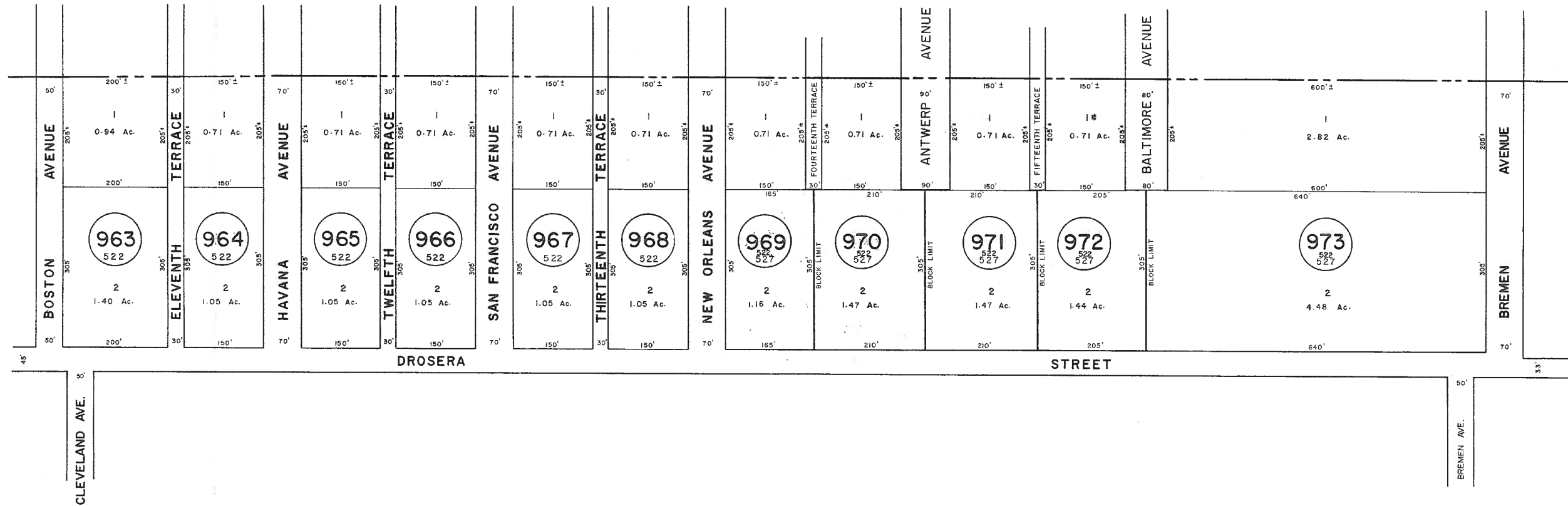


ATLANTIC COUNTY
GALLOWAY TOWNSHIP



See Adjoining Sheet 34.04



See Adjoining Sheet 35

* EXEMPT TOWNSHIP OF HAMILTON

NEW JERSEY DEPARTMENT OF THE TREASURY
DIVISION OF TAXATION
LOCAL PROPERTY AND PUBLIC UTILITY BRANCH
APPROVED AS A TAX MAP PURSUANT TO THE
PROVISIONS OF CHAPTER 175, LAWS OF 1913, ETC.
FOR THE DIRECTOR, DIVISION OF TAXATION

Richard J. Anthony P.E. & L.S.
LIC. #15434 CHIEF, ENGINEERING SECTION
DATE: JAN 22 1985 SERIAL NO. 654

NEW JERSEY DEPARTMENT OF THE TREASURY
DIVISION OF TAXATION
LOCAL PROPERTY AND PUBLIC UTILITY BRANCH
APPROVED AS A TAX MAP PURSUANT TO THE
PROVISIONS OF CHAPTER 175, LAWS OF 1913, ETC.
FOR THE DIRECTOR, DIVISION OF TAXATION

Ronald J. Price P.E. & L.S.
DATE: MAR 10 1985 SERIAL NO. 578

TAX MAP
TOWNSHIP OF HAMILTON
ATLANTIC COUNTY, NEW JERSEY
SCALE: 1" = 100' DATE: JUNE 1, 1977

RONALD J. PRICE
PLEASANTVILLE, N.J.
N.J. LICENSE NO. 13901