

See Adjoining Sheet 21.01

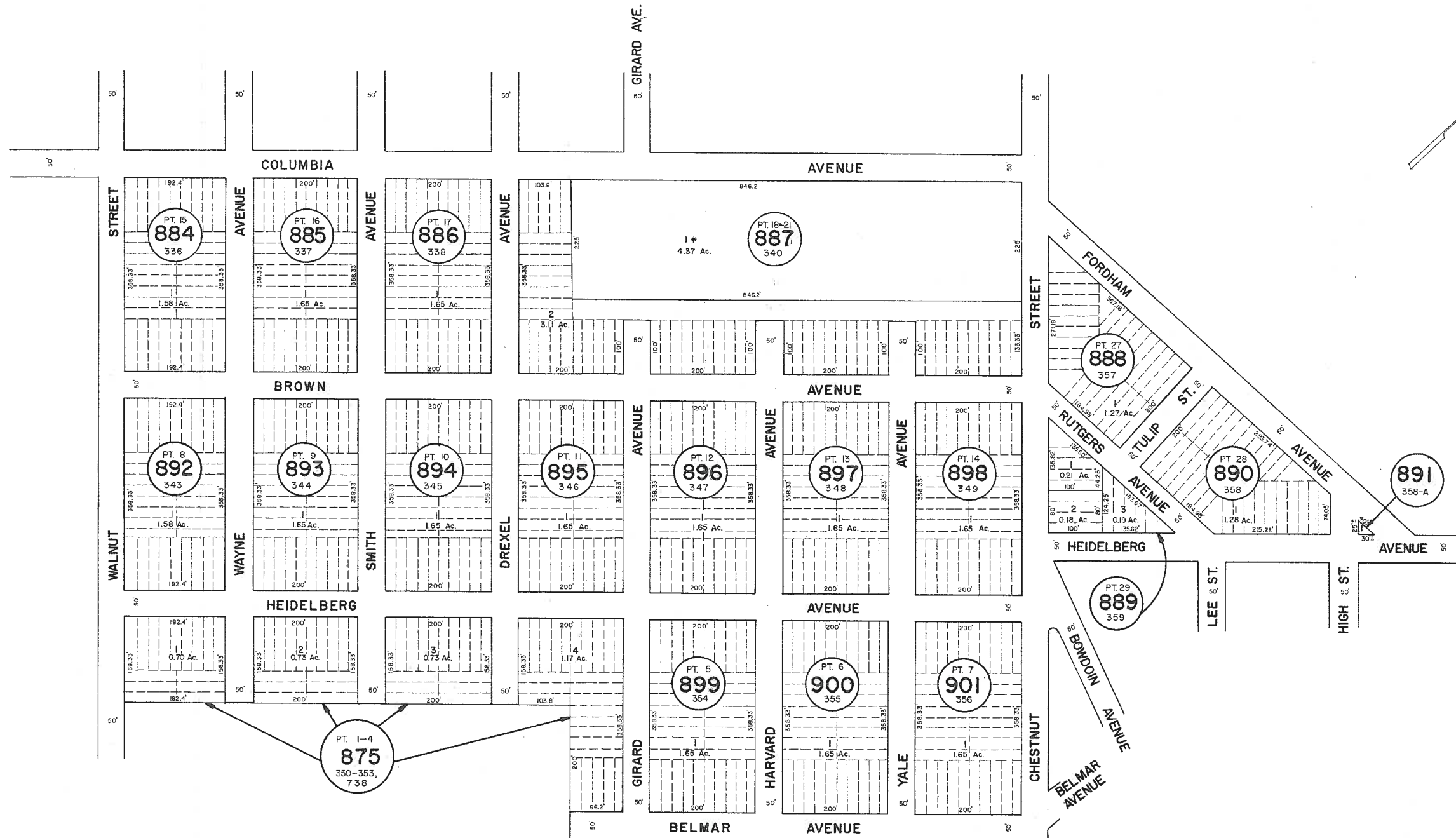
See Adjoining Sheet 21

See Adjoining Sheet 21.01

See Adjoining Sheet 34

See Adjoining Sheet 21

See Adjoining Sheet 34.02



NOTE: LETTERS PT. INDICATE NUMBER ON MAP OF PINEWOOD TERRACE.
 * EXEMPT TOWNSHIP OF HAMILTON

NEW JERSEY DEPARTMENT OF THE TREASURY
 DIVISION OF TAXATION
 LOCAL PROPERTY AND PUBLIC UTILITY BRANCH
 APPROVED AS A TAX MAP PURSUANT TO THE
 PROVISIONS OF CHAPTER 173, LAWS OF 1913, ETC.
 FOR THE DIRECTOR, DIVISION OF TAXATION

John J. Gaffney
 BY: LIC. #15434 P.E. & L.S.
 JAN 22 1976 CHIEF, ENGINEERING SECTION

NEW JERSEY DEPARTMENT OF THE TREASURY
 DIVISION OF TAXATION
 LOCAL PROPERTY AND PUBLIC UTILITY BRANCH
 APPROVED AS A TAX MAP PURSUANT TO THE
 PROVISIONS OF CHAPTER 173, LAWS OF 1913, ETC.
 FOR THE DIRECTOR, DIVISION OF TAXATION

BY: LIC. # 5009 P.E. & L.S.
 MAR 16 1976 CHIEF, ENGINEERING SECTION

TAX MAP
TOWNSHIP OF HAMILTON
 ATLANTIC COUNTY, NEW JERSEY
 SCALE: 1" = 100' DATE: JUNE 1, 1977

RONALD J. PRICE
 PLEASANTVILLE, N.J.
 N.J. LICENSE NO. 13801

See Adjoining Sheet 34

REV. BY CHURCHILL - FEB. 2008