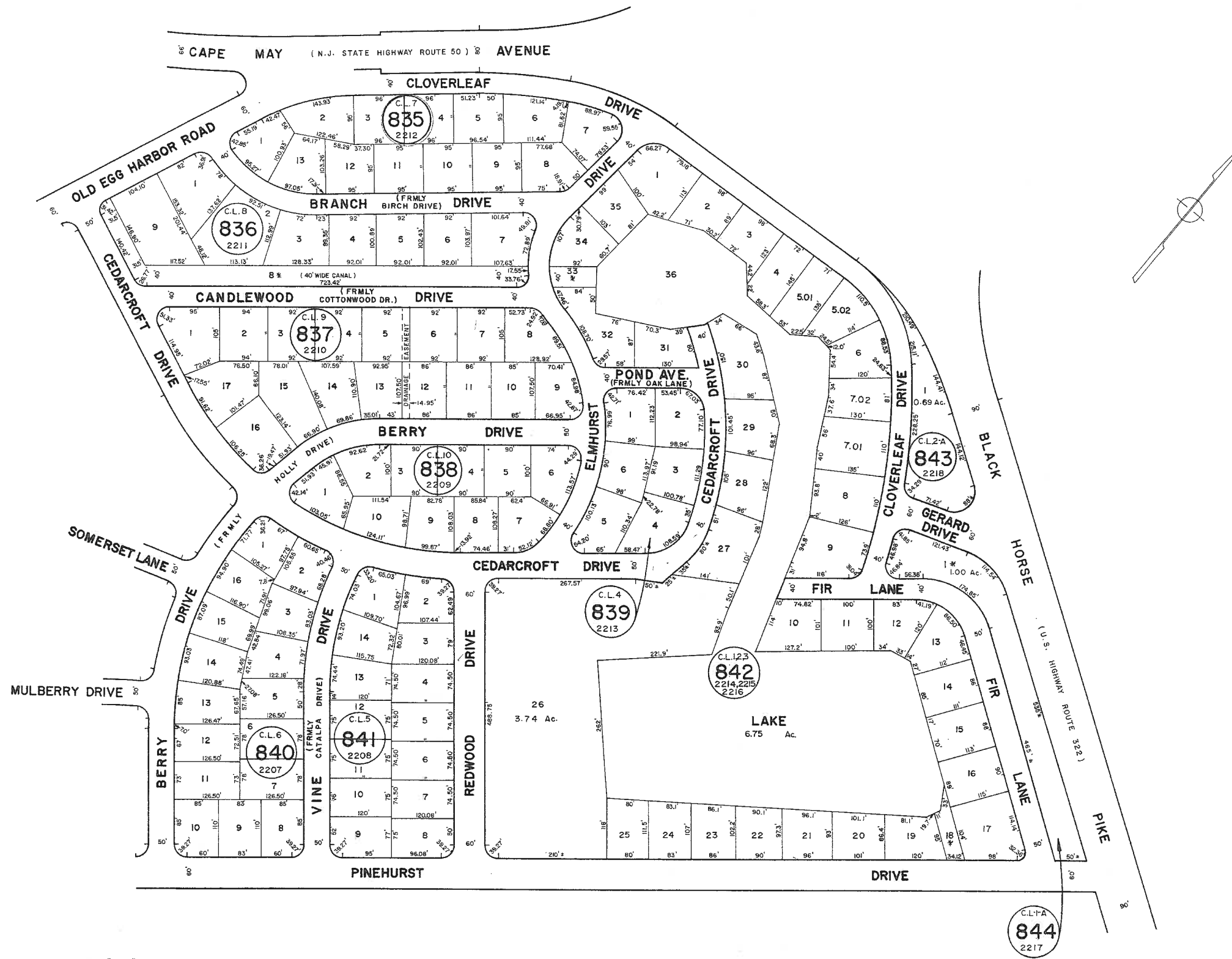


See Adjoining Sheet 29

See Adjoining Sheet 31.07

See Adjoining Sheet 32



NOTE: LETTERS "C.L." INDICATES NUMBER ON MAP OF CLOVERLEAF LAKES - SECTION NO. 1
 * EXEMPT TOWNSHIP OF HAMILTON

NEW JERSEY DEPARTMENT OF THE TREASURY
 DIVISION OF TAXATION
 LOCAL PROPERTY AND PUBLIC UTILITY BRANCH
 APPROVED AS A TAX MAP PURSUANT TO THE
 PROVISIONS OF CHAPTER 175, LAWS OF 1913, ETC.
 FOR THE JERSEY DIVISION OF TAXATION
 BY: *[Signature]* P.E. & L.S.
 L.C. #15436 CHIEF, ENGINEERING SECTION
 JAN 22 1996 SERIAL NO. 5734

NEW JERSEY DEPARTMENT OF THE TREASURY
 DIVISION OF TAXATION
 LOCAL PROPERTY AND PUBLIC UTILITY BRANCH
 APPROVED AS A TAX MAP PURSUANT TO THE
 PROVISIONS OF CHAPTER 175, LAWS OF 1913, ETC.
 FOR THE JERSEY DIVISION OF TAXATION
 BY: *[Signature]* P.E. & L.S.
 DATE: MAR 18 1996 SERIAL NO. 5735

TAX MAP
 TOWNSHIP OF HAMILTON
 ATLANTIC COUNTY, NEW JERSEY
 SCALE: 1" = 100' DATE: JUNE 1, 1997

RONALD J. PRICE
 PLEASANTVILLE, N.J.
 N.J. LICENSE NO. 12901

See Adjoining Sheet 38

REV. BY CHURCHILL - FEB. 2008
 REV. BY ALEXANDER M. CHURCHILL ASSOC. - JAN. '95

WPHA 4-19-85
 REVISIONS